

1268 W. SOUTH JORDAN PARKWAY

FOR LEASE



## PROPERTY DETAILS

1268 West South Jordan Parkway, Suite 101, South Jordan, Utah 84095

**SUITE 101 ASKING RATE: \$19.00 NNN**

- Suite 101, 2,805 RSF for Lease (Fully Built Out Dental Space)
- Elevator
- Ample Parking
- Desirable South Jordan Location
- Excellent Visibility with High Traffic Counts
- Minutes to I-15



**NEWMARK**

**MOUNTAIN WEST**

**PETER BLACK**

pblack@newmarkmw.com

direct 801.971.9425

[View Profile](#)

**FULL SERVICE  
COMMERCIAL REAL ESTATE**

312 East South Temple

Salt Lake City, Utah 84111

Office 801.456.8800

[www.newmarkmw.com](http://www.newmarkmw.com)



# NEWMARK

 MOUNTAIN WEST

**PETER BLACK**

[pblack@newmarkmw.com](mailto:pblack@newmarkmw.com)

direct 801.971.9425

[View Profile](#)



**FULL SERVICE  
COMMERCIAL REAL ESTATE**

312 East South Temple

Salt Lake City, Utah 84111

Office 801.456.8800

[www.newmarkmw.com](http://www.newmarkmw.com)



# NEWMARK

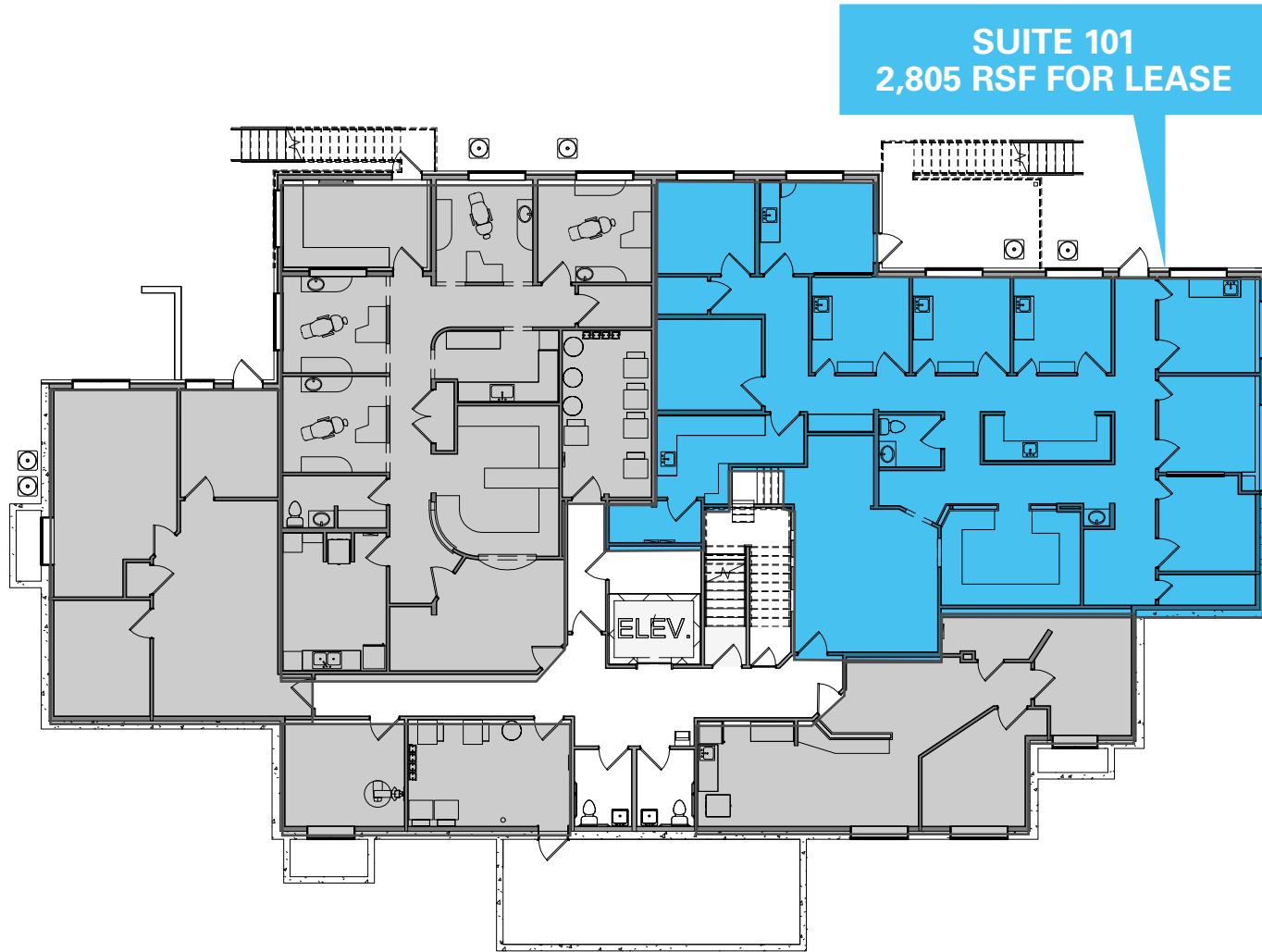
 MOUNTAIN WEST

**PETER BLACK**  
pblack@newmarkmw.com  
direct 801.971.9425  
[View Profile](#)

**FULL SERVICE  
COMMERCIAL REAL ESTATE**  
312 East South Temple  
Salt Lake City, Utah 84111  
Office 801.456.8800  
[www.newmarkmw.com](http://www.newmarkmw.com)

FLOOR PLAN - BASEMENT

PETER BLACK  
pblack@newmarkmw.com  
direct 801.971.9425  
[View Profile](#)



FULL SERVICE  
COMMERCIAL REAL ESTATE  
312 East South Temple  
Salt Lake City, Utah 84111  
Office 801.456.8800  
[www.newmarkmw.com](http://www.newmarkmw.com)



**NEWMARK**  
MOUNTAIN WEST

**PETER BLACK**  
pblack@newmarkmw.com  
direct 801.971.9425  
[View Profile](#)

**FULL SERVICE  
COMMERCIAL REAL ESTATE**  
312 East South Temple  
Salt Lake City, Utah 84111  
Office 801.456.8800  
[www.newmarkmw.com](http://www.newmarkmw.com)



**PETER BLACK**  
pblack@newmarkmw.com  
direct 801.971.9425  
[View Profile](#)

**FULL SERVICE  
COMMERCIAL REAL ESTATE**  
312 East South Temple  
Salt Lake City, Utah 84111  
Office 801.456.8800  
[www.newmarkmw.com](http://www.newmarkmw.com)