

**1792 TRIBUTE RD  
SACRAMENTO, CA**

**FOR LEASE**

**1,373 RSF - 9,880 RSF**

**OFFICE AND MEDICAL SUITES AVAILABLE**

**ETHAN CONRAD**  
PROPERTIES INC.

**BERMAN SKIN INSTITUTE**

1792

**MAJOR REMODEL COMPLETE**

**VIEW VIRTUAL TOUR**

FOR MORE INFORMATION CONTACT:

**Sandy Rodriguez**

DRE: #01249030

sarodriguez@ethanconradprop.com

**Todd Newburn**

DRE: #01226238

tnewburn@ethanconradprop.com

**916.779.1000**

ETHAN CONRAD PROPERTIES, INC  
1300 NATIONAL DRIVE, SUITE 100 | SACRAMENTO CA, 95834 | 916.779.1000  
www.ethanconradprop.com

**FEATURES:**

- Four-story ±45,000 RSF Class-A Office
- Building signage available
- Immediate access to Business 80 at Exposition Blvd
- Parking ratio 4:1,000 SF
- 1st floor covered garage with 25 stalls
- Walking distance to Marriott Hotels
- Numerous retail and dining amenities nearby
- Rapid access to Downtown Sacramento

**PROPERTY DETAILS:**

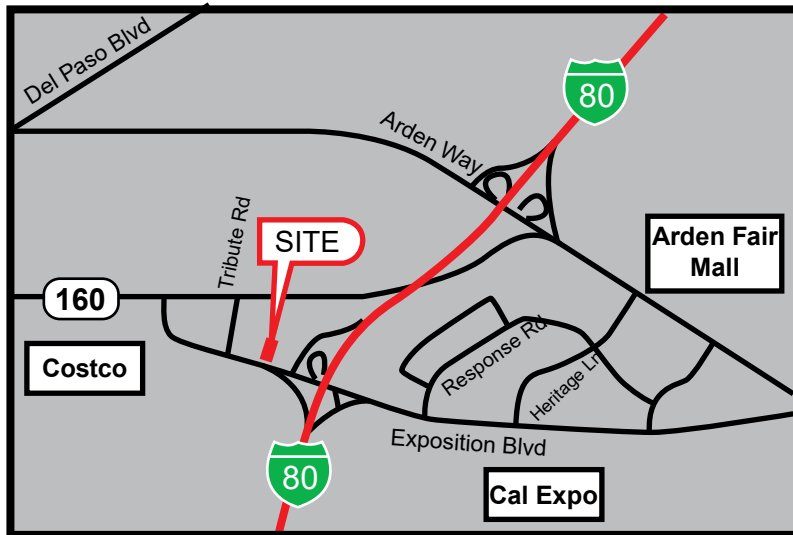
Proximate to Capitol City Freeway, Business 80, and Arden Fair Mall. Move in ready suite with flexible and efficient layout. Building top signage available.

Adjacent to CalExpo and walking distance to Costco.

Full access to ground floor showers and lockers.

**LEASE RATES:**

Suite 300:	9,880 RSF	\$1.75 PSF, Full Service	<a href="#">VIEW VIRTUAL TOUR</a>
Suite 470:	1,373 RSF	\$1.85 PSF, Full Service	



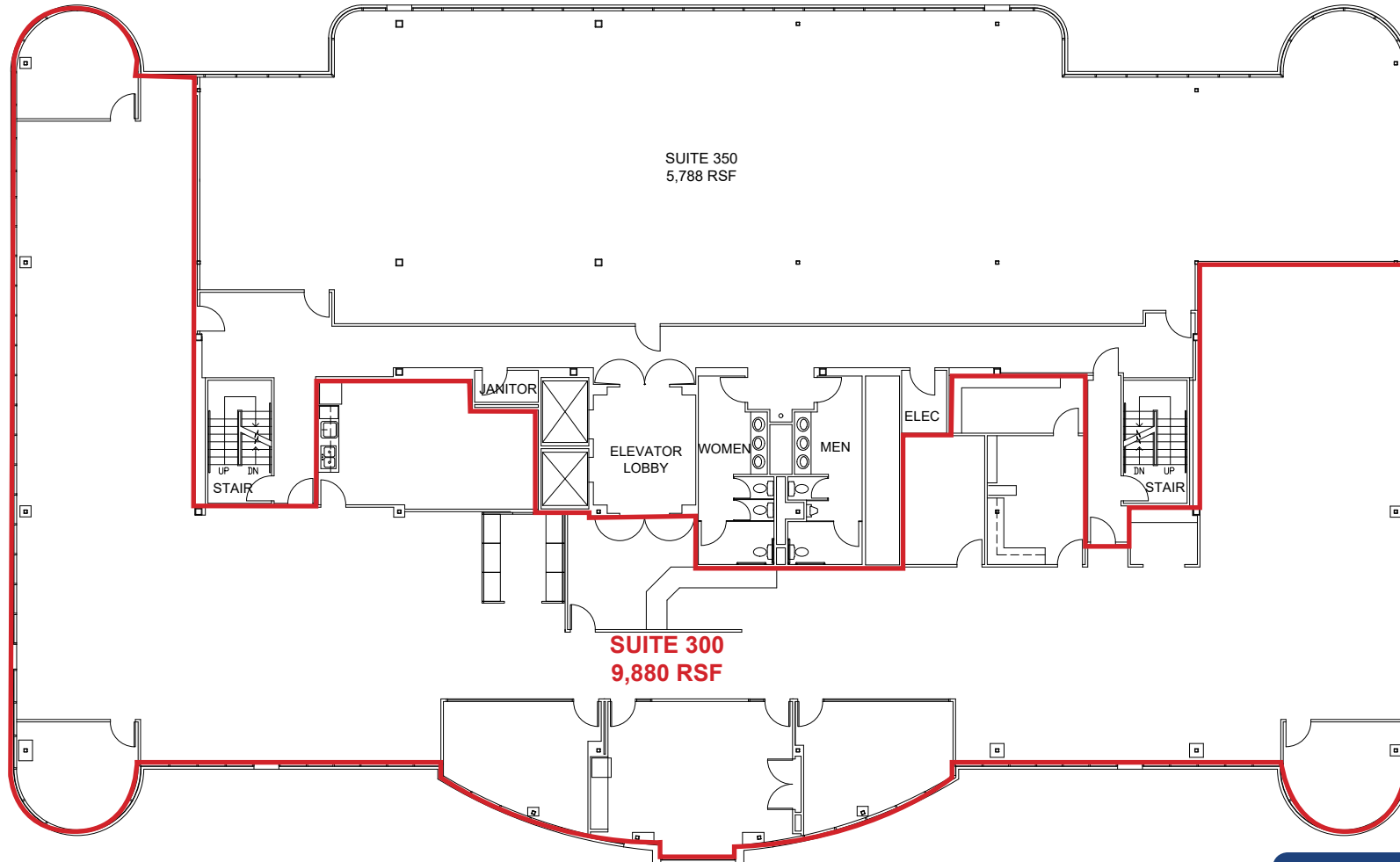
**ETHAN CONRAD PROPERTIES, INC.**

1300 NATIONAL DRIVE, SUITE 100 | SACRAMENTO CA, 95834 | 916.779.1000

www.ethanconradprop.com

The information contained herein has been obtained from sources we believe to be reliable. However, we cannot guarantee, warrant or represent its accuracy and all information is subject to error, change or withdrawal. An interested party and their advisors should conduct an independent investigation of the property to determine to your satisfaction the suitability of the property for your needs.

3RD FLOOR



[VIEW VIRTUAL TOUR](#)

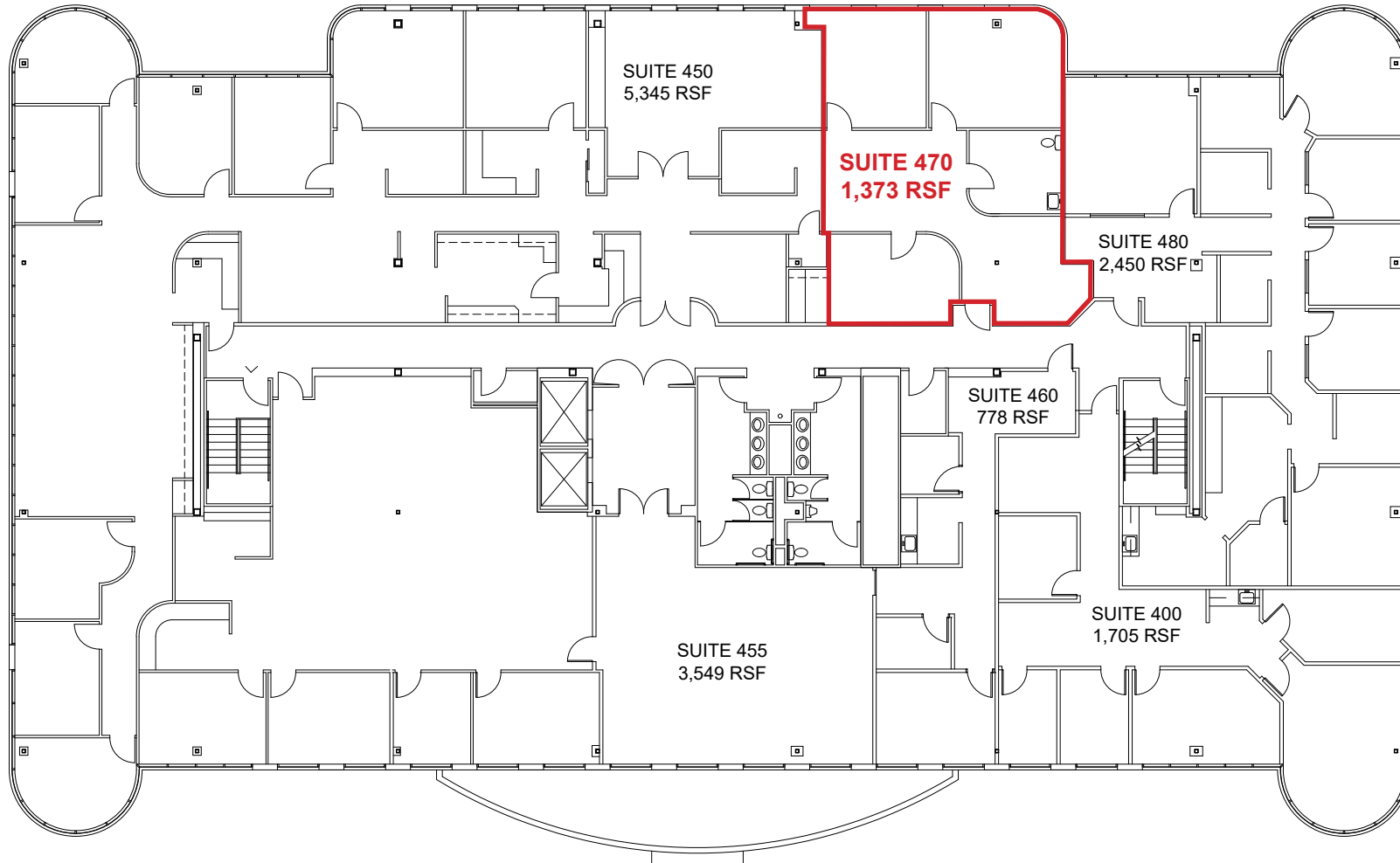
**ETHAN CONRAD PROPERTIES, INC.**

1300 NATIONAL DRIVE, SUITE 100 | SACRAMENTO CA, 95834 | 916.779.1000

[www.ethanconradprop.com](http://www.ethanconradprop.com)

The information contained herein has been obtained from sources we believe to be reliable. However, we cannot guarantee, warrant or represent its accuracy and all information is subject to error, change or withdrawal. An interested party and their advisors should conduct an independent investigation of the property to determine to your satisfaction the suitability of the property for your needs.

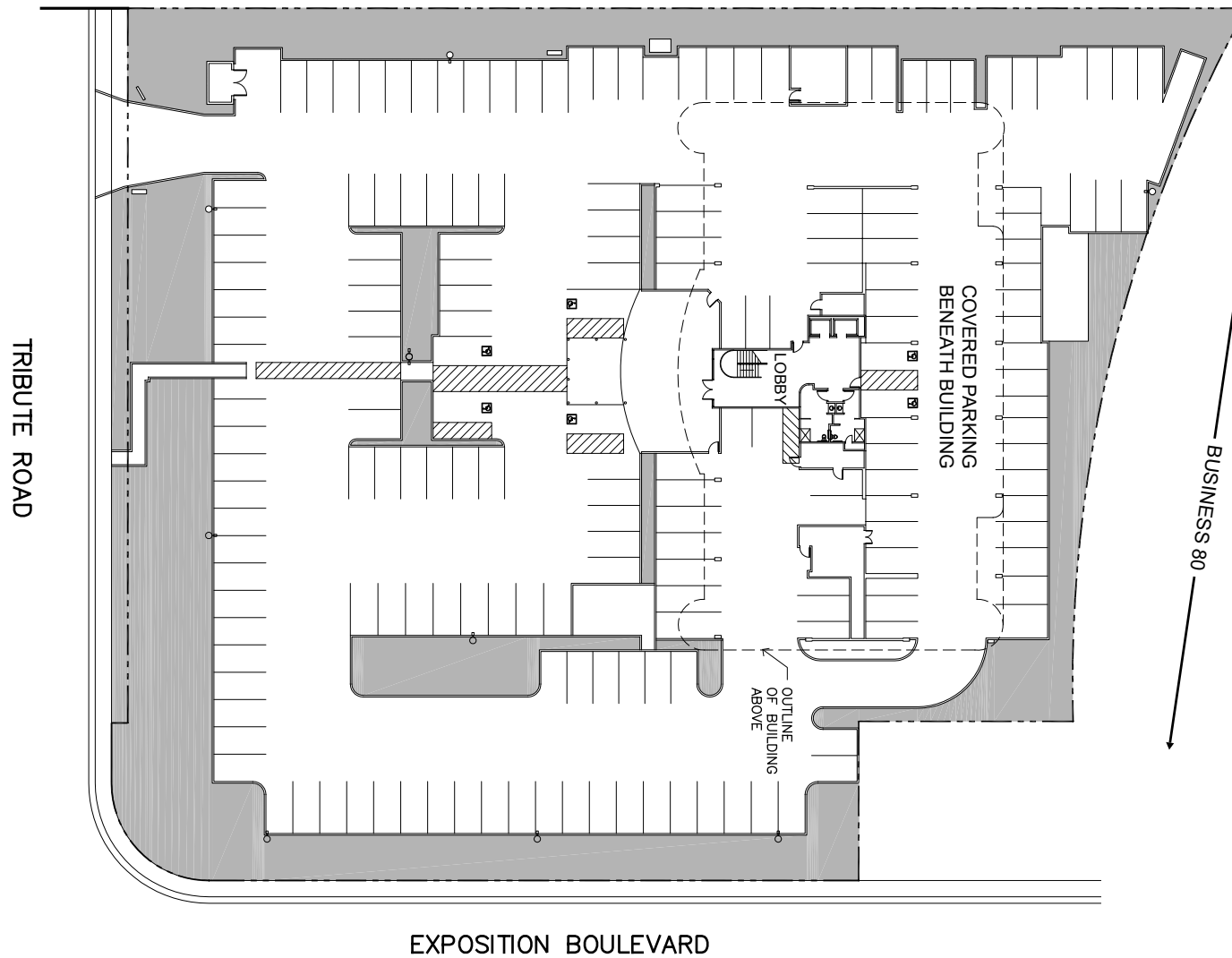
4TH FLOOR



**ETHAN CONRAD PROPERTIES, INC.**  
1300 NATIONAL DRIVE, SUITE 100 | SACRAMENTO CA, 95834 | 916.779.1000  
[www.ethanconradprop.com](http://www.ethanconradprop.com)

The information contained herein has been obtained from sources we believe to be reliable. However, we cannot guarantee, warrant or represent its accuracy and all information is subject to error, change or withdrawal. An interested party and their advisors should conduct an independent investigation of the property to determine to your satisfaction the suitability of the property for your needs.

SITE PLAN



The information contained herein has been obtained from sources we believe to be reliable. However, we cannot guarantee, warrant or represent its accuracy and all information is subject to error, change or withdrawal. An interested party and their advisors should conduct an independent investigation of the property to determine to your satisfaction the suitability of the property for your needs.

**ETHAN CONRAD PROPERTIES, INC.**

1300 NATIONAL DRIVE, SUITE 100 | SACRAMENTO CA, 95834 | 916.779.1000

[www.ethanconradprop.com](http://www.ethanconradprop.com)



The information contained herein has been obtained from sources we believe to be reliable. However, we cannot guarantee, warrant or represent its accuracy and all information is subject to error, change or withdrawal. An interested party and their advisors should conduct an independent investigation of the property to determine to your satisfaction the suitability of the property for your needs.

**ETHAN CONRAD PROPERTIES, INC.**

1300 NATIONAL DRIVE, SUITE 100 | SACRAMENTO CA, 95834 | 916.779.1000

[www.ethanconradprop.com](http://www.ethanconradprop.com)