

PACIFIC BUSINESS CENTER



1175, 1125 & 1065 AMERICAN PACIFIC DR.
188 & 190 GALLAGHER CREST RD., 1070 MARY CREST RD. | HENDERSON | NV | 89074

FOR MORE INFORMATION:

JAKE HIGGINS, SIOR
702.369.4844
jake.higgins@cbre.com
Lic. #S.0176473

KELSEY HIGGINS
702.369.4812
kelsey.higgins@cbre.com
Lic. #S.0192524

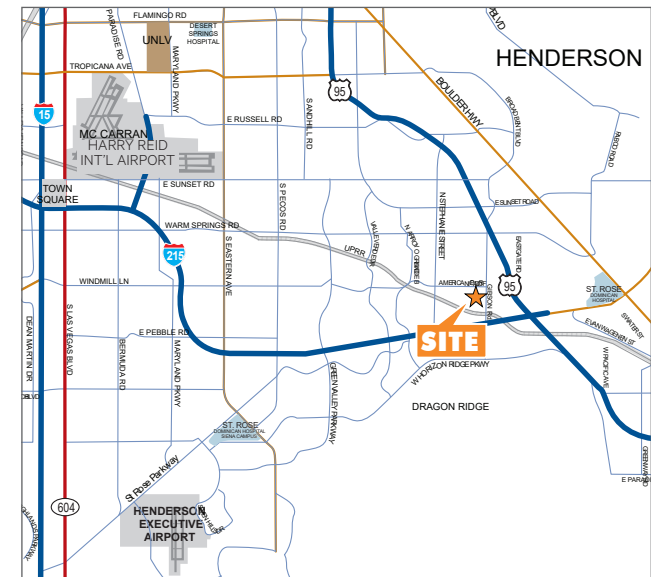
CBRE INC.
8548 Rozita Lee Ave, Suite 200
Las Vegas, NV 89113
www.cbre.com

CBRE



PROPERTY FEATURES

- Located within the Henderson Submarket on the SWC of American Pacific Drive & Gibson Road with access to US-95 freeway via Auto Show Road
- ±5,225 - 40,000 SF available
- Distribution, midbay industrial, flex and showroom units available
- 277/480V, 3-Phase Power
- 2% skylights & LED/Halide/T5 lighting
- Foreign trade zone
- Recently Completed Spec Improvements
- HVAC maintenance included in OPEX



The information contained herein is believed to be accurate but is not warranted as to its accuracy and may change or be updated without notice. Seller or landlord makes no representation as to the environmental condition of the property and recommends purchaser's or tenant's independent investigation.

PACIFIC BUSINESS CENTER

SITE PLAN

AVAILABLE



FOR MORE INFORMATION

JAKE HIGGINS, SIOR
702.369.4844
jake.higgins@cbre.com
Lic. #S.0176473

KELSEY HIGGINS
702.369.4812
kelsey.higgins@cbre.com
Lic. #S.0192524

CBRE INC.
8548 Rozita Lee Ave, Suite 200
Las Vegas, NV 89113
www.cbre.com

PACIFIC BUSINESS CENTER
HENDERSON, NV 89074

AVAILABILITIES

BLDG	SUITE	TOTAL SF	OFFICE SF	CLEAR HEIGHT	DOCK HIGH	GRADE DOORS	LEASE RATE PSF	CAM
1175	C	±5,225	±4,347	24'	-	1	\$1.40	\$0.25
1125	C	±5,499	±3,174	24'	-	1	\$1.40	\$0.25
1065	G	±6,779	±1,343	24'	2	1	\$1.40	\$0.25
188	D	±14,385	±1,171	26' - 28'	2	1	Call for Pricing	\$0.25
190	E	±14,690	±1,343	26' - 28'	2	1	Call for Pricing	\$0.25
1070	A	±16,818	±1,301	26' - 28'	2	1	Call for Pricing	\$0.25
1070	B	±23,395	±891	26' - 28'	2	1	Call for Pricing	\$0.25
1070	A/B	±40,213	±2,192	26' - 28'	4	2	Call for Pricing	\$0.25
1070	D	±40,000	±2,701	26' - 28'	4	1	Call for Pricing	\$0.25

CBRE

PACIFIC BUSINESS CENTER

AMENITIES & IMPROVEMENTS



IMPROVEMENTS

- Landscape Upgrades
- Exterior Paint
- Asphalt Repair/Parking Lot
- Tenant Signage
- Monument Signage
- Roof Repairs
- HVAC

FOR MORE INFORMATION

JAKE HIGGINS, SIOR
 702.369.4844
jake.higgins@cbre.com
 Lic. #S.0176473

KELSEY HIGGINS
 702.369.4812
kelsey.higgins@cbre.com
 Lic. #S.0192524

CBRE INC.
 8548 Rozita Lee Ave, Suite 200
 Las Vegas, NV 89113
www.cbre.com

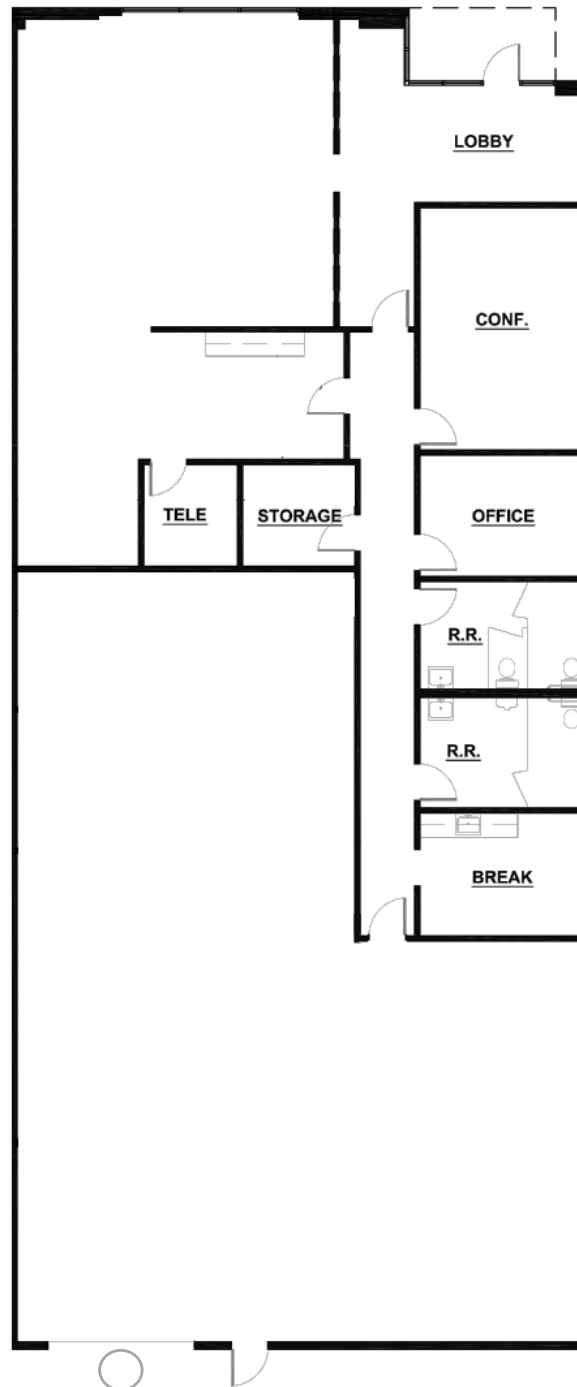
PACIFIC BUSINESS CENTER
 HENDERSON, NV 89074



NEARBY AMENITIES

PACIFIC BUSINESS CENTER

SITE PLAN



FEATURES

- ±5,225 SF Total
- ±4,347 SF Office
- ±878 SF Warehouse
- 24' Clear Height
- Grade Door: 1
- Fire Sprinklers
- LED Lighting
- Lease Rate: \$1.40 PSF
- CAM: \$0.25 PSF
- Available August 2026

FOR MORE INFORMATION

JAKE HIGGINS, SIOR
702.369.4844
jake.higgins@cbre.com
Lic. #S.0176473

KELSEY HIGGINS
702.369.4812
kelsey.higgins@cbre.com
Lic. #S.0192524

PACIFIC BUSINESS CENTER
HENDERSON, NV 89074

CBRE

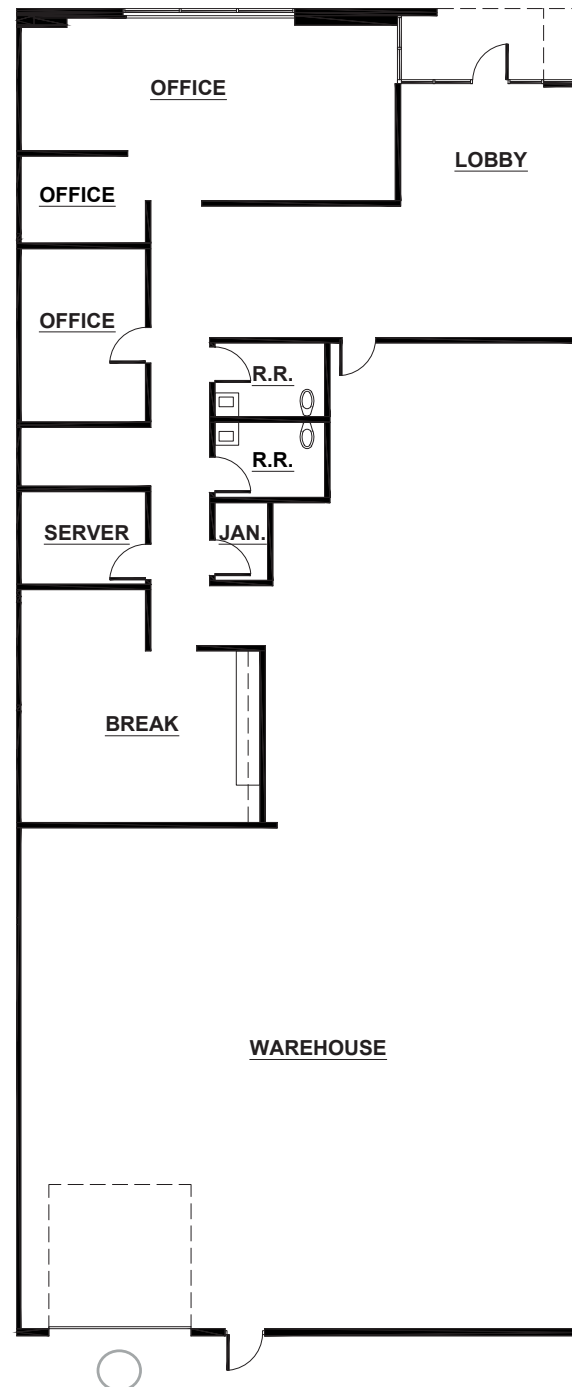
○ GRADE DOOR

*FLOOR PLAN NOT TO SCALE

1175 AMERICAN PACIFIC DRIVE - STE C

PACIFIC BUSINESS CENTER

SITE PLAN



FEATURES

- ±5,225 SF Total
- ±3,174 SF Office
- ±2,325 SF Warehouse
- 24' Clear Height
- Grade Door: 1
- Fire Sprinklers
- LED Lighting
- Lease Rate: \$1.40 PSF
- CAM: \$0.25 PSF
- Available August 2026

FOR MORE INFORMATION

JAKE HIGGINS, SIOR
702.369.4844
jake.higgins@cbre.com
Lic. #S.0176473

KELSEY HIGGINS
702.369.4812
kelsey.higgins@cbre.com
Lic. #S.0192524

PACIFIC BUSINESS CENTER
HENDERSON, NV 89074

CBRE

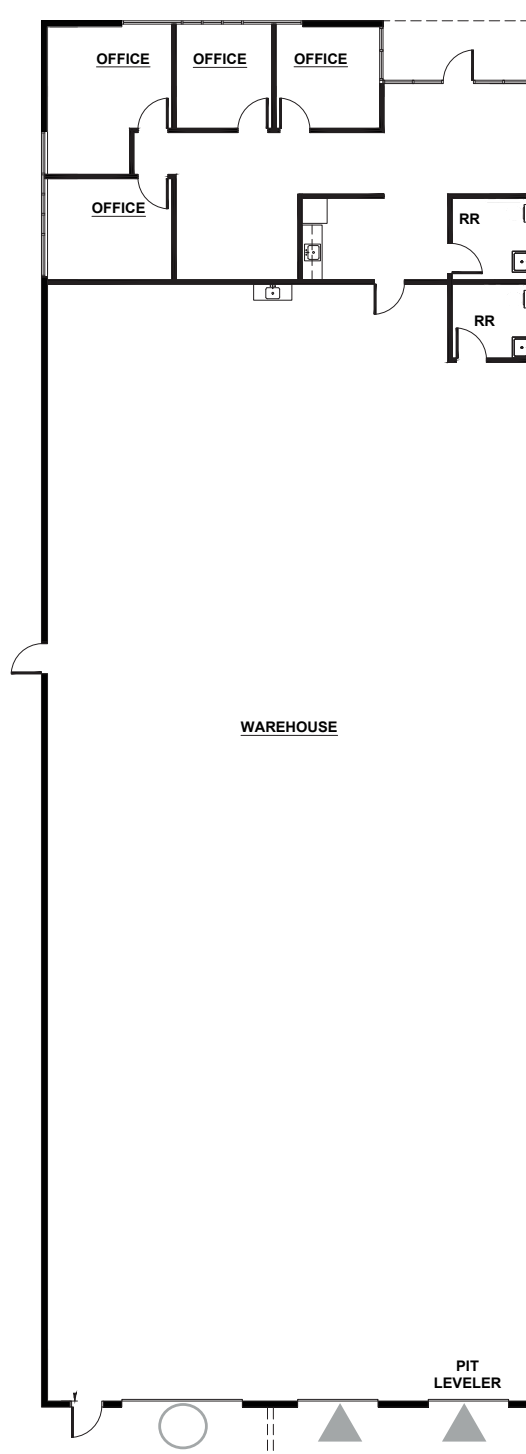
○ GRADE DOOR

*FLOOR PLAN NOT TO SCALE

1125 AMERICAN PACIFIC DRIVE - STE C

PACIFIC BUSINESS CENTER

SITE PLAN



FEATURES

- ±6,779 SF Total
- ±1,343 SF Office
- ±5,436 SF Warehouse
- 24' Clear Height
- Grade Doors: 1
- Dock Doors: 2
- Pit Levelers: 1
- Fire Sprinklers
- LED Lighting
- Lease rate: \$1.40 PSF
- CAM: \$0.25 PSF
- Spec Improvements Recently Completed Available

FOR MORE INFORMATION

JAKE HIGGINS, SIOR
702.369.4844
jake.higgins@cbre.com
Lic. #S.0176473

KELSEY HIGGINS
702.369.4812
kelsey.higgins@cbre.com
Lic. #S.0192524

PACIFIC BUSINESS CENTER
HENDERSON, NV 89074

CBRE

▲ DOCK DOOR

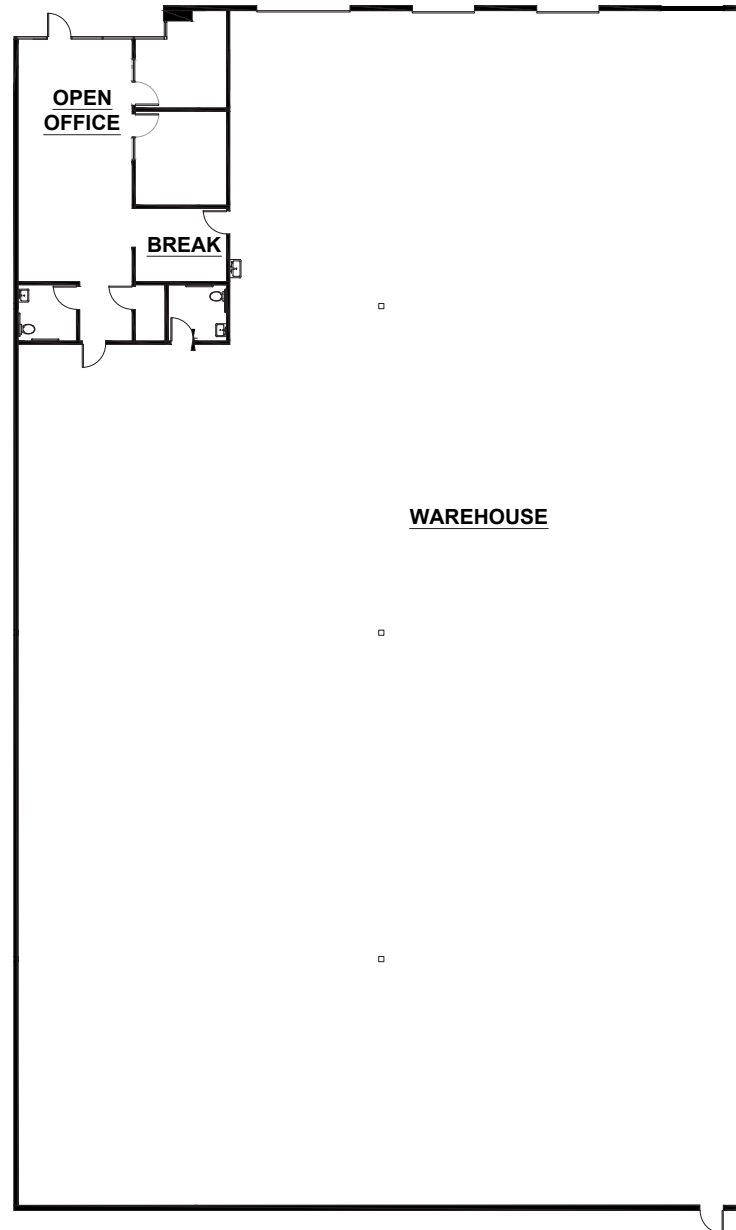
○ GRADE DOOR

*FLOOR PLAN NOT TO SCALE

1065 AMERICAN PACIFIC DRIVE - SUITE G

PACIFIC BUSINESS CENTER

SITE PLAN



▲ DOCK DOOR

○ GRADE DOOR

*FLOOR PLAN NOT TO SCALE

FEATURES

- ±14,385 SF Total
- ±1,171 SF Office
- ±13,214 SF Warehouse
- 26-28' Clear Height
- Clear Height To Be Verified by Tenant
- Grade Door: 1
- Dock Doors: 2
- Fire Sprinklers
- LED Lighting
- Lease Rate: Call for Pricing
- CAM: \$0.25 PSF
- Available

FOR MORE INFORMATION

JAKE HIGGINS, SIOR
702.369.4844
jake.higgins@cbre.com
Lic. #S.0176473

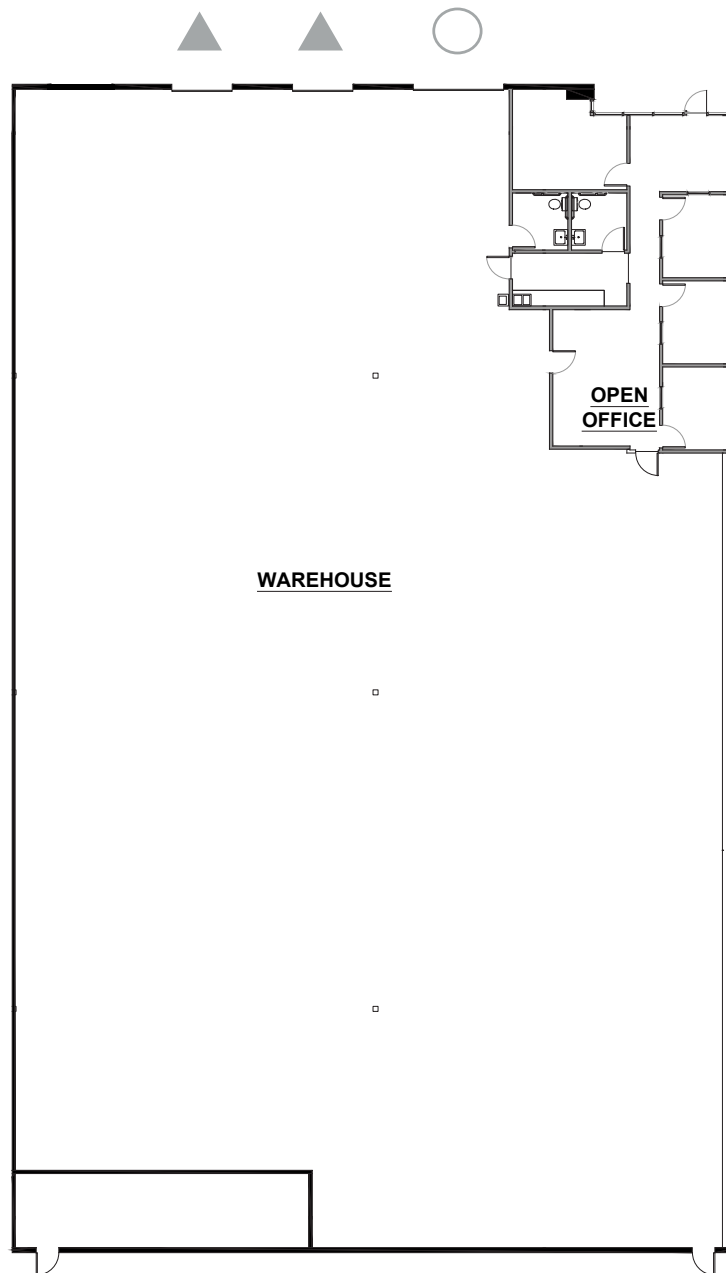
KELSEY HIGGINS
702.369.4812
kelsey.higgins@cbre.com
Lic. #S.0192524

PACIFIC BUSINESS CENTER
HENDERSON, NV 89074

CBRE

PACIFIC BUSINESS CENTER

SITE PLAN



▲ DOCK DOOR

○ GRADE DOOR

*FLOOR PLAN NOT TO SCALE

FEATURES

±14,690 SF Total
±1,343 SF Office
±13,347 SF Warehouse
26-28' Clear Height
Clear Height To Be Verified by Tenant
Grade Door: 1
Dock Doors: 2
Fire Sprinklers
LED Lighting
Lease Rate: Call for Pricing
CAM: \$0.25 PSF
Available

FOR MORE INFORMATION

JAKE HIGGINS, SIOR
702.369.4844
jake.higgins@cbre.com
Lic. #S.0176473

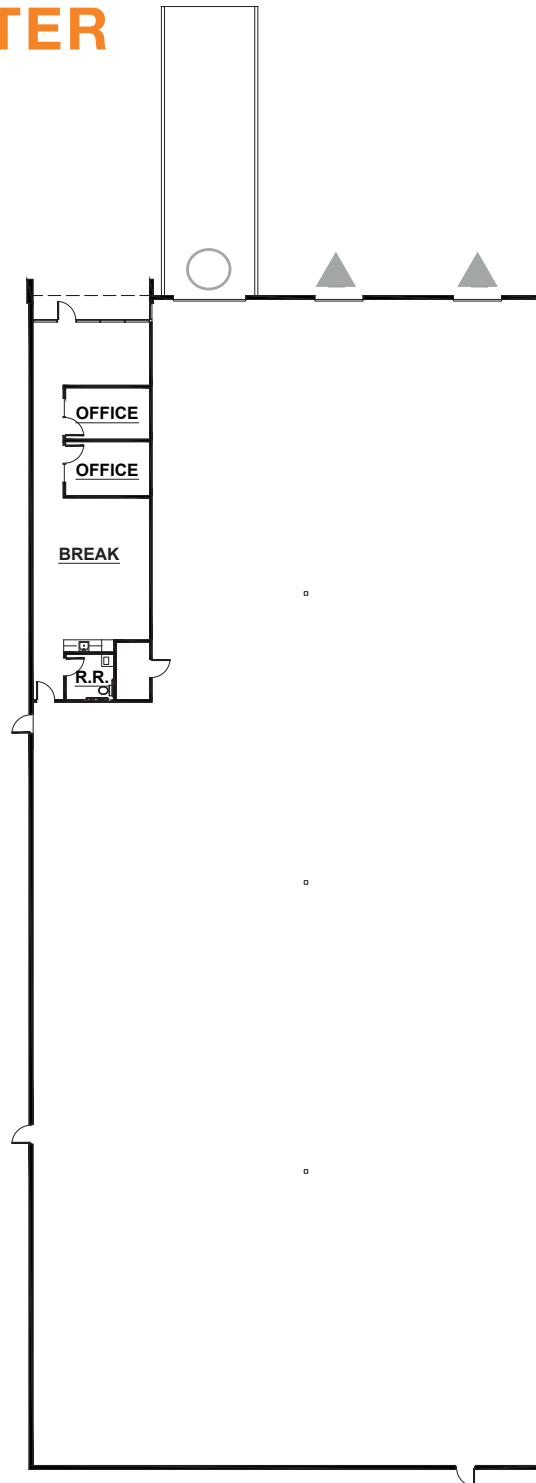
KELSEY HIGGINS
702.369.4812
kelsey.higgins@cbre.com
Lic. #S.0192524

PACIFIC BUSINESS CENTER
HENDERSON, NV 89074

CBRE

PACIFIC BUSINESS CENTER

SITE PLAN



FEATURES

±16,818 SF Total
±1,301 SF Office
±15,517 SF Warehouse
26-28' Clear Height
Grade Doors: 1
Dock Doors: 2
Column Spacing: 40' x 48'

Lease Rate: Call for Pricing
CAM: \$0.25 PSF
Available Q2 2026

FOR MORE INFORMATION

JAKE HIGGINS, SIOR
702.369.4844
jake.higgins@cbre.com
Lic. #S.0176473

KELSEY HIGGINS
702.369.4812
kelsey.higgins@cbre.com
Lic. #S.0192524

PACIFIC BUSINESS CENTER
HENDERSON, NV 89074

CBRE

▲ DOCK DOOR

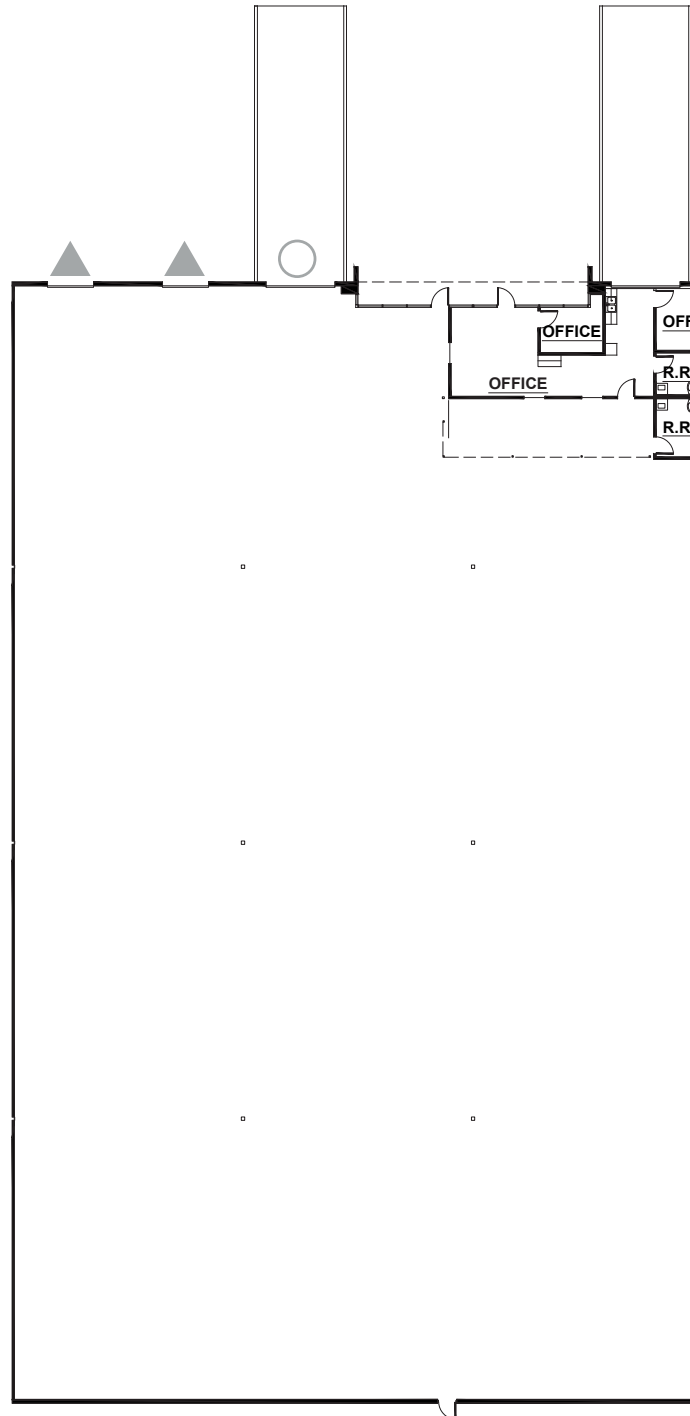
○ GRADE DOOR

*FLOOR PLAN NOT TO SCALE

1070 MARY CREST RD. SUITE A

PACIFIC BUSINESS CENTER

SITE PLAN



▲ DOCK DOOR

○ GRADE DOOR

*FLOOR PLAN NOT TO SCALE

FEATURES

±23,395 SF Total

±891 SF Office

±22,504 SF Warehouse

26-28' Clear Height

Grade Doors: 1

Dock Doors: 2

Column Spacing: 40' x 48'

Lease Rate: Call for Pricing

CAM: \$0.25 PSF

Available Q2 2026

FOR MORE INFORMATION

JAKE HIGGINS, SIOR

702.369.4844

jake.higgins@cbre.com

Lic. #S.0176473

KELSEY HIGGINS

702.369.4812

kelsey.higgins@cbre.com

Lic. #S.0192524

PACIFIC BUSINESS CENTER

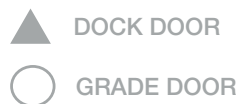
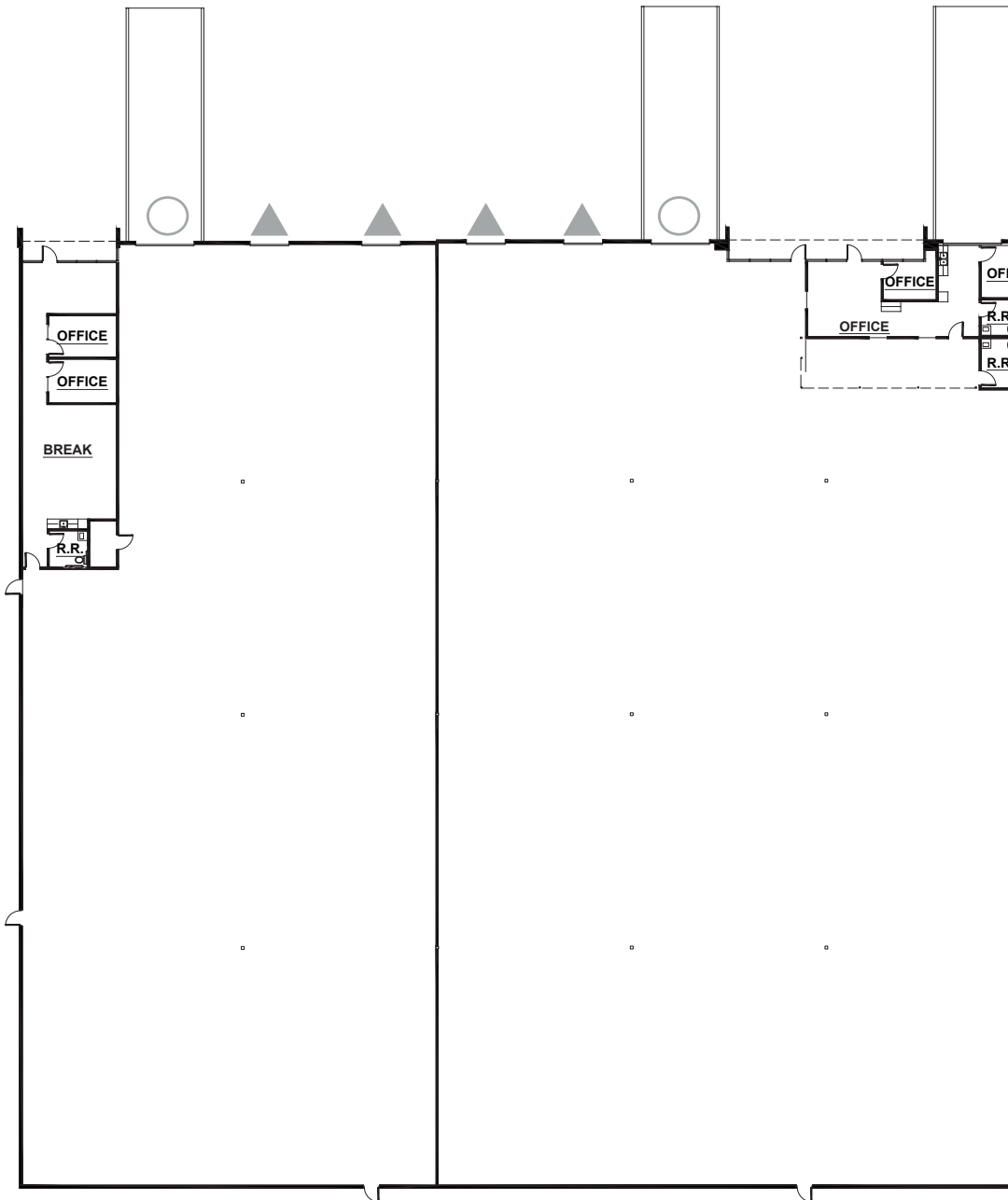
HENDERSON, NV 89074

CBRE

1070 MARY CREST RD. SUITE B

PACIFIC BUSINESS CENTER

SITE PLAN



*FLOOR PLAN NOT TO SCALE

FEATURES

- ±40,213 Combined SF
- ±2,192 Combined Office SF
 - ±891 SF Office 1
 - ±1,301 SF Office 2
- ±38,021 SF Warehouse
- 26-28' Clear Height
- Grade Doors: 2
- Dock Doors: 4
- Column Spacing: 40' x 48'

Lease Rate: Call for Pricing
CAM: \$0.25 PSF
Available Q2 2026

FOR MORE INFORMATION

JAKE HIGGINS, SIOR
702.369.4844
jake.higgins@cbre.com
Lic. #S.0176473

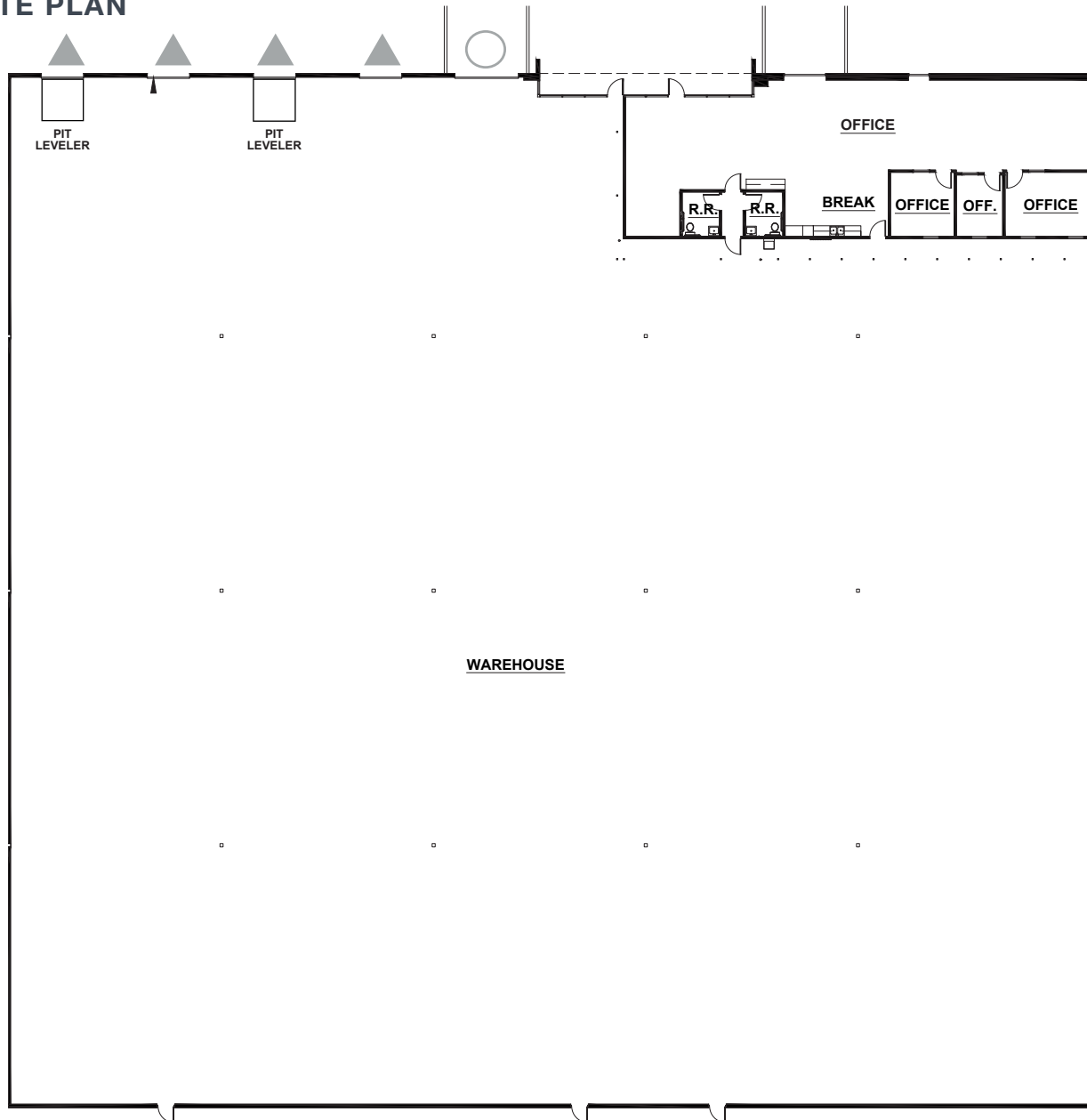
KELSEY HIGGINS
702.369.4812
kelsey.higgins@cbre.com
Lic. #S.0192524

PACIFIC BUSINESS CENTER
HENDERSON, NV 89074

CBRE

PACIFIC BUSINESS CENTER

SITE PLAN



FEATURES

- ±40,000 SF Total
- ±2,701 SF Office
- ±37,199 SF Warehouse
- 26-28' Clear Height
- Clear Height To Be Verified by Tenant
- Grade Doors: 1
- Dock Doors: 4
- Pit Levelers: 2
- Fire Sprinklers
- LED Lighting
- Lease Rate: Call for Pricing
- CAM: \$0.25 PSF
- Available

FOR MORE INFORMATION

JAKE HIGGINS, SIOR
702.369.4844
jake.higgins@cbre.com
Lic. #S.0176473

KELSEY HIGGINS
702.369.4812
kelsey.higgins@cbre.com
Lic. #S.0192524

PACIFIC BUSINESS CENTER
HENDERSON, NV 89074



DOCK DOOR



GRADE DOOR

*FLOOR PLAN NOT TO SCALE

PACIFIC BUSINESS CENTER



FOR MORE INFORMATION

JAKE HIGGINS, SIOR
702.369.4844
jake.higgins@cbre.com
Lic. #S.0176473

KELSEY HIGGINS
702.369.4812
kelsey.higgins@cbre.com
Lic. #S.0192524

CBRE INC.
8548 Rozita Lee Ave, Suite 200
Las Vegas, NV 89113
www.cbre.com

PACIFIC BUSINESS CENTER
HENDERSON, NV 89074

CBRE