

# 555-557 MAIN STREET

## ORANGE, NEW JERSEY

10,400 SF | DIVISIBLE | FOR LEASE

**KYLE GOWOREK**  
kgoworek@jefferyrealty.com  
C: 201.978.1770  
O: 908.668.9600

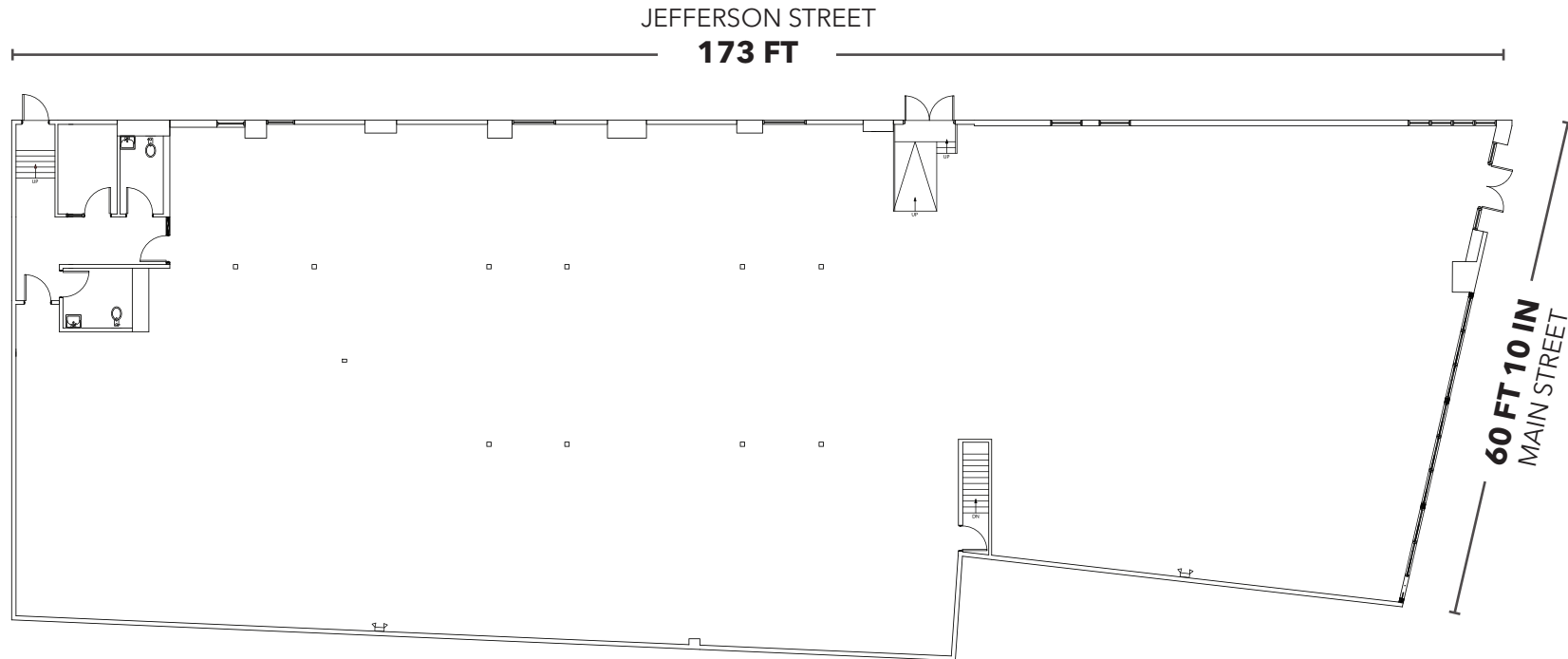
**SHANE WIERKS**  
swierks@jefferyrealty.com  
C: 908.581.7781  
O: 908.668.9600



# 555-557 MAIN STREET

## ORANGE, NEW JERSEY

# SITE INFORMATION



### SIZE

10,400 SF

### FRONTAGE

60 FT 10 IN on Main Street

### RENT

Call for Quote

### NNN

\$5.65 PSF

### GLA

140,000 SF

### TRAFFIC COUNTS

Main Street - 8,338 VPD

### NOTES

- Divisions from 4,400-6000 SF
- On-site Parking Lot with 21 Spaces
- Billboard Signage Available
- Pylon Signage Available at Shops on Main

# 555-557 MAIN STREET ORANGE, NEW JERSEY

## BUILDING PHOTOS



