

55 Cambridge Parkway, Cambridge, MA



# SUBLEASE OPPORTUNITY

**15,300 - 30,567 RSF**

Term: Thru January 2030

Waterfront Views

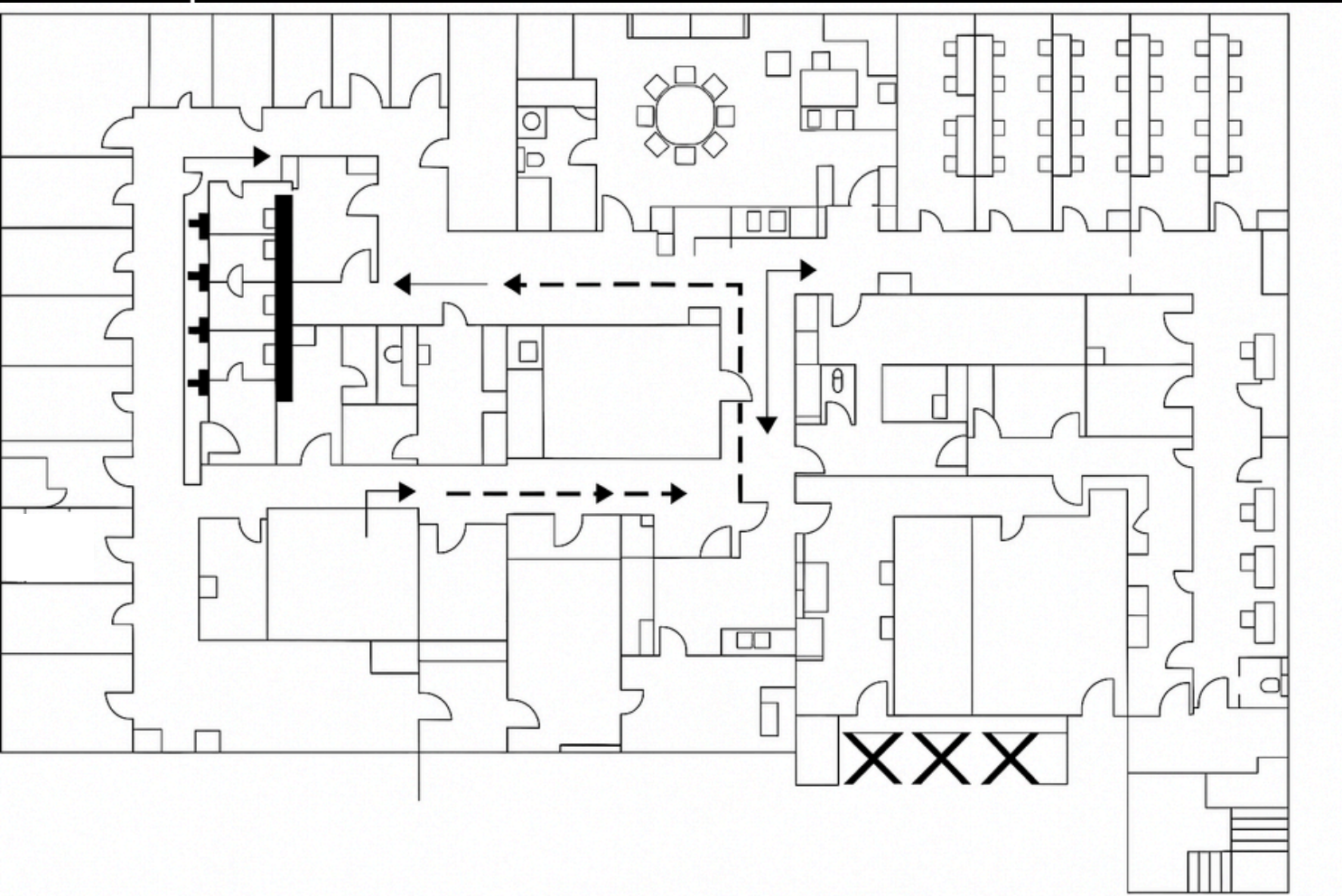
Plug & Play Office / Event &  
Conference space

Immediate Occupancy

Two Floors (Can demise)

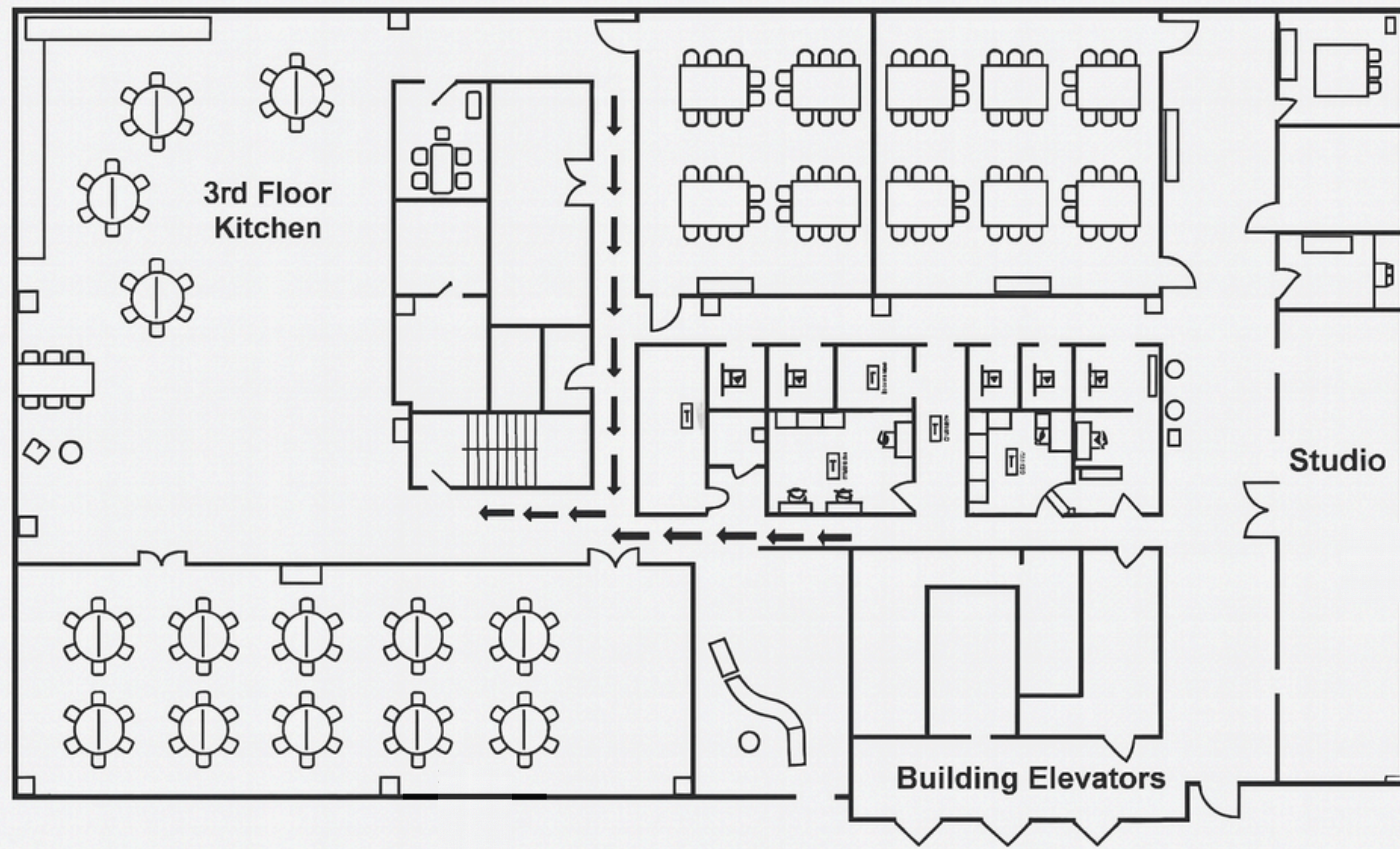


# 4th Floor



- Waterfront Views
- 24 Private Offices
- Reception Area
- Large Kitchen
- Conference Rooms
- Workstations Available
- Collaborative Workspaces
- Lounge Area
- Low-Mid \$40's/SF





- Waterfront Views
- Large Kitchen
- Large Conference Rooms
- Studio Room
- Mother's Room
- Huddle Rooms
- Training Rooms
- Lounge Area
- High \$30's/SF



55 Cambridge Parkway, Cambridge, MA



STEELE  
GROUP



## For more information, contact:

Mekae Hyde  
Mekae@thestelegroup.com  
207-576-1161

Steele Divitto  
Steele@thestelegroup.com  
857-275-2814

David Campbell  
David.Campbell@thestelegroup.com  
617-750-6535

Brendan Entenmann  
Brendan@thestelegroup.com  
315-406-9628

The content of this is confidential and intended for the recipient specified in message only. It is strictly forbidden to share any part of this message with any third party, without a written consent of the sender. If you received this message by mistake, please reply to this message and follow with its deletion, so that we can ensure such a mistake does not occur in the future.