

# 20101 67th Avenue NE

Arlington, WA

## Key Facts

Property type Industrial space

Building size 63,690 SF

Space available 63,690 SF



## Contact Us

Learn more about this property or schedule a tour by reaching out to our local investment and leasing officer.

**Chad Rawlings**

+1 (206) 310-4229

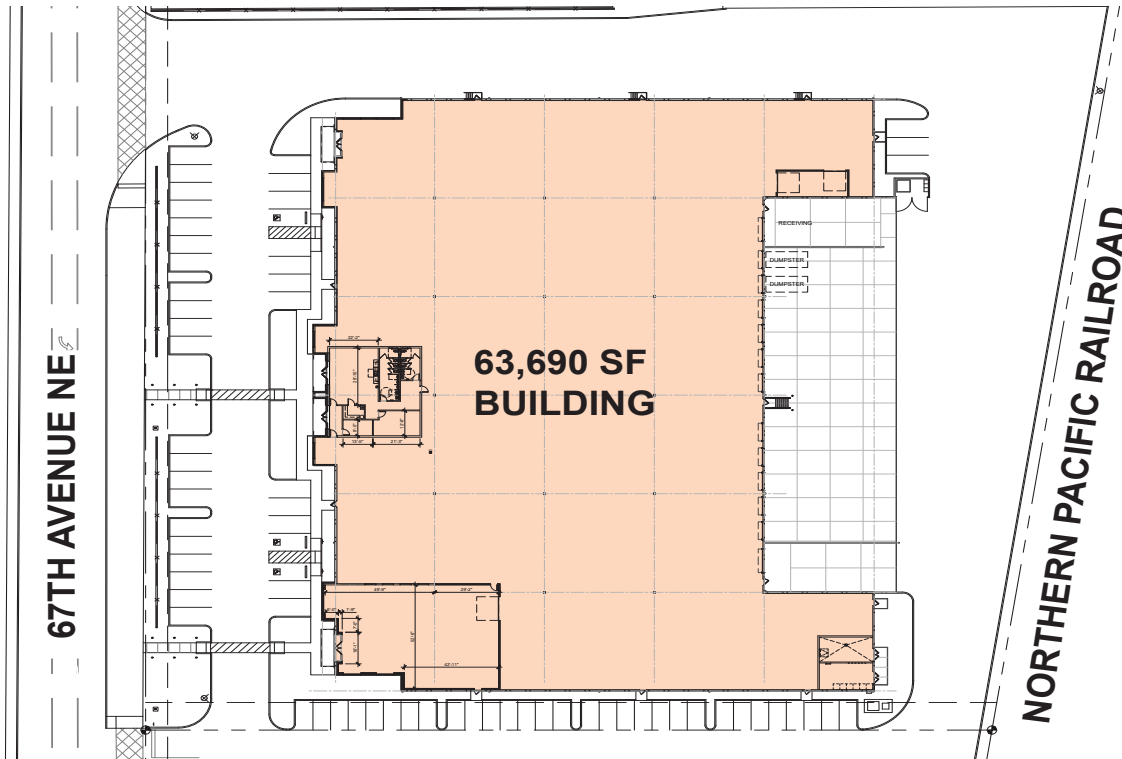
[chad.rawlings@eqtpartners.com](mailto:chad.rawlings@eqtpartners.com)

# 20101 67th Avenue NE

Arlington, WA

## BUILDING SPECIFICATIONS

Building Size: 63,690 SF
Available Size: 63,690 SF
Office Space: 2,200 SF
Clear Height: 24'
Dock Doors: 11
Drive-In Doors: 2
Truck Court Depth: 110' - 140'
Parking Stalls: 69
Lighting: LED Motion Sensor
Power: 2,000 Amps, 277/480 Y-Volt, 3-Phase
Fire Protection: ESFR Sprinkler System



## Contact Us

Learn more about this property or schedule a tour by reaching out to our local investment and leasing officer.

**Chad Rawlings**

+1 (206) 310-4229

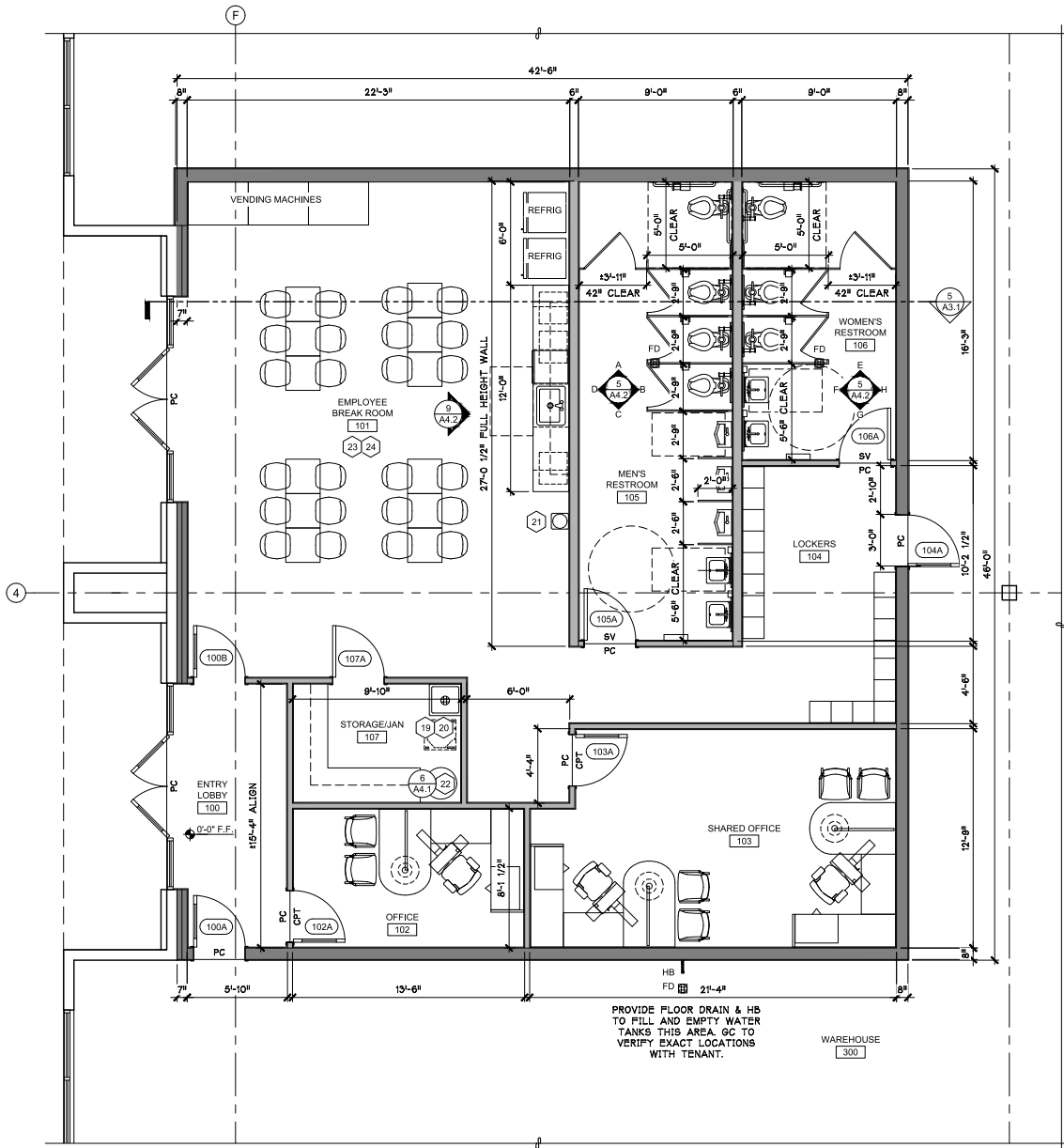
chad.rawlings@eqtpartners.com



# 20101 67th Avenue NE

Arlington, WA

OFFICE PLAN - 2,200 SF



## Contact Us

Learn more about this property or schedule a tour by reaching out to our local investment and leasing officer.

**Chad Rawlings**

+1 (206) 310-4229

chad.rawlings@eqtpartners.com