

CAMPING WORLD FOR SALE

4590 North US Hwy 6 • Helper, Utah 84526

HIGHLIGHTS

- SALE PRICE: \$2.2M
- LOT SIZE: 4.12 ACRES
- SEE BUILDING SIZES ON PAGE 4
- ZONING: C-2 COMMERCIAL
- [3D VIRTUAL TOUR \(CLICK HERE\)](#)



TANNER OLSON

801.930.6752 | tolson@legendcommercial.com

JOE MILLS

801.930.6755 | jmills@legendcommercial.com

JEANENE MAXSON

702.343.0904 | jeanene@dunbarcommercial.com
LICENSE# BS.0146680.LLC

PARTNER **XTEAM**
RETAIL ADVISORS

LEGEND
PARTNERS ■■■■

801.930.6750 | www.legendllp.com
2180 S 1300 E, Suite 240 | Salt Lake City, UT 84106

HELPER, UTAH



DEMOGRAPHICS

	3 MILE	5 MILE	7 MILE
2024 EST. POPULATION	3,794	8,053	14,853
2029 PROJECTED POPULATION	3,907	8,329	15,276
2024 EST. DAYTIME POPULATION	697	2,537	7,507
2024 EST. AVG HH INCOME	\$73,192	\$78,234	\$71,501
2024 EST. HOUSEHOLDS	1,587	3,146	5,923
2024 EST. BUSINESSES	135	337	835



TANNER OLSON

801.930.6752 | tolson@legendcommercial.com

JOE MILLS

801.930.6755 | jmills@legendcommercial.com

JEANENE MAXSON

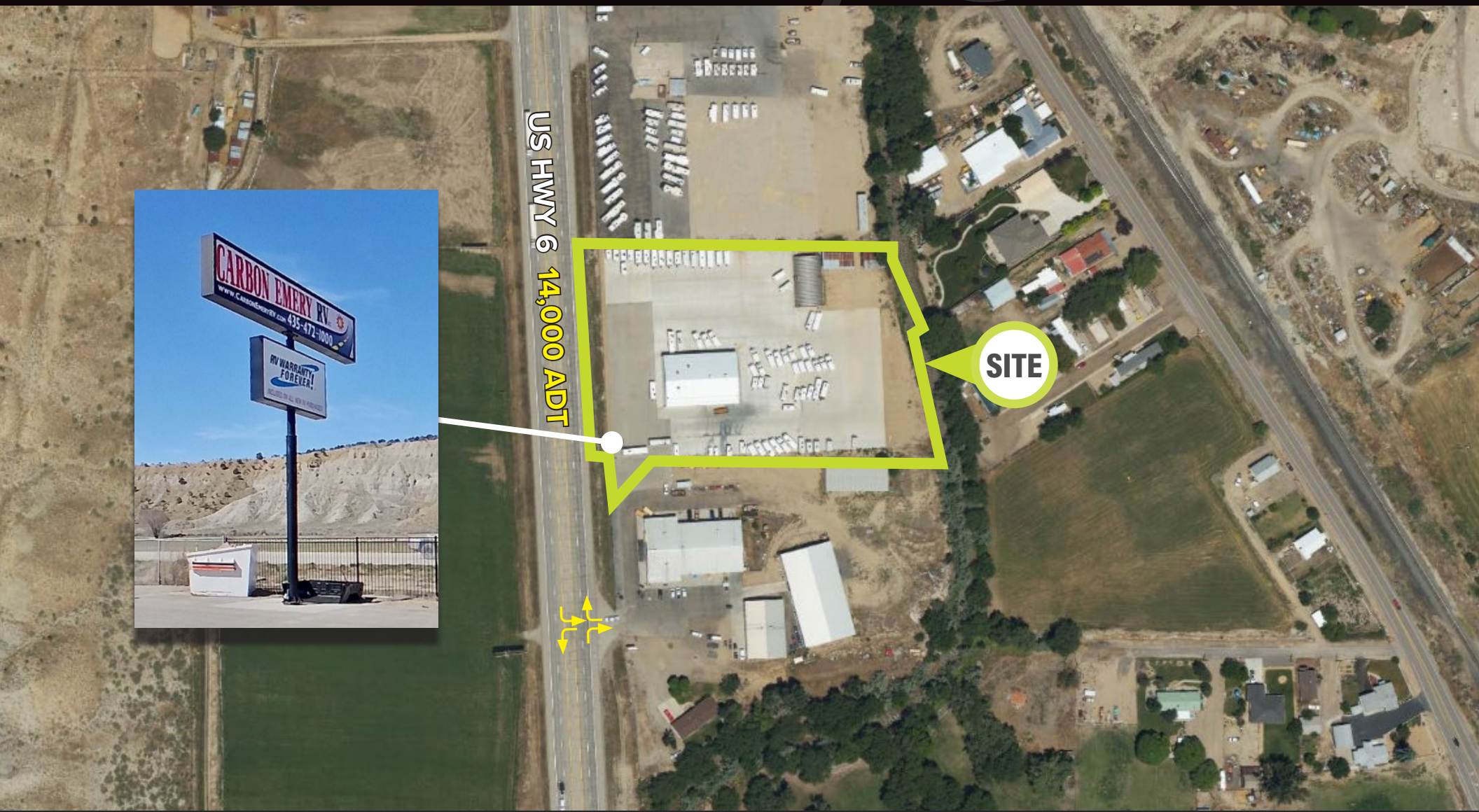
702.343.0904 | jeanene@dunbarcommercial.com
LICENSE# BS,0146680,LLC

PARTNER **XTEAM**
RETAIL ADVISORS

LEGEND
PARTNERS ■■■■

801.930.6750 | www.legendllp.com
2180 S 1300 E, Suite 240 | Salt Lake City, UT 84106

HELPER, UTAH



TANNER OLSON

801.930.6752 | tolson@legendcommercial.com

JOE MILLS

801.930.6755 | jmills@legendcommercial.com

JEANENE MAXSON

702.343.0904 | jeanene@dunbarcommercial.com
LICENSE# BS,0146680,LLC



LEGEND

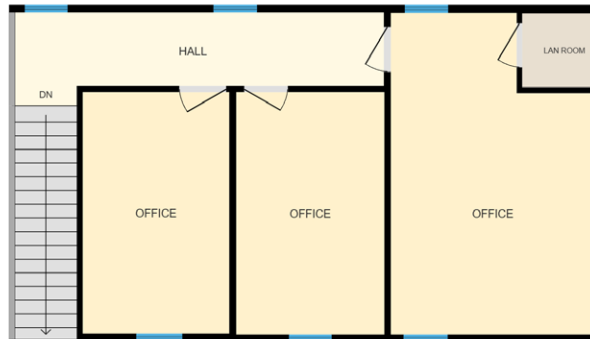
PARTNERS 

801.930.6750 | www.legendllp.com
2180 S 1300 E, Suite 240 | Salt Lake City, UT 84106

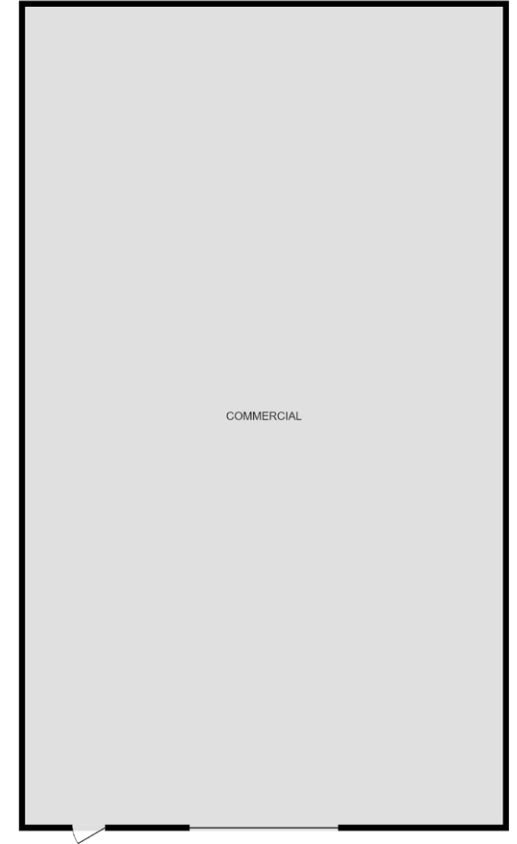
MAIN LEVEL
9,161 SF



2ND FLOOR OFFICE
879 SF



STORAGE SHED
3,639 SF



TANNER OLSON

801.930.6752 | tolson@legendcommercial.com

JOE MILLS

801.930.6755 | jmills@legendcommercial.com

JEANENE MAXSON

702.343.0904 | jeanene@dunbarcommercial.com
LICENSE# BS.0146680.LLC



801.930.6750 | www.legendllp.com
2180 S 1300 E, Suite 240 | Salt Lake City, UT 84106