

# GENERAL NOTES

- DO NOT SCALE DRAWINGS. NOTIFY ARCHITECT IN WRITING OF ANY DISCREPANCIES.
- ALL DIMENSIONS SHOWN TO FACE OF FINISH DRYWALL, UNLESS MASONRY IS FINISHED FACE.
- REFER TO STRUCTURAL DRAWINGS FOR ALL SHEAR WALL LOCATIONS, ASSEMBLIES AND NOTES.
- REFER TO A-001 FOR ALL FIRE RATED WALL ASSEMBLY LOCATIONS AND HOURLY RATINGS. JOINTS INSTALLED IN OR BETWEEN FIRE-RESISTANCE-RATED WALLS, FLOORS OR FLOOR/CEILING AND ROOFS OR ROOF/CEILING ASSEMBLIES SHALL BE PROTECTED BY AN APPROVED FIRE-RESISTANT JOINT SYSTEM DESIGNED TO RESIST PASSAGE OF FIRE FOR A TIME PERIOD NOT LESS THAN THE REQUIRED FIRE-RESISTANCE RATING OF THE WALL, FLOOR OR ROOF IN OR BETWEEN WHICH IT IS INSTALLED.
- ALL INTERIOR PARTITIONS TO BE TYPE 1 PER A-004 UNLESS TAGGED OTHERWISE. NOTIFY ARCHITECT IN WRITING OF ANY DISCREPANCIES.
- BEDROOM CLOSETS  
SEE INTERIOR DETAILS FOR TYPICAL CLOSET STORAGE LAYOUT AND LUGGAGE SHELF LOCATION. ALL INTERIOR FINISH DEPTH DIMENSIONS (DRYWALL TO DRYWALL) FOR CLOSETS TO BE 2'-0" OUN. WHEN POSSIBLE, PROVIDE FRAMED LUGGAGE SHELF ABOVE CLOSET PER A-012.
- MECHANICAL SHAFTS  
ALL MECHANICAL SHAFTS TO BE FULLY ENCLOSED ON ALL SIDES WITH SHAFTWALL CONSTRUCTION FOR A 2HR FIRE RATING. WHEN ADJACENT TO 2-HR FIRE RATED CMU, SHAFTWALL NOT REQUIRED.
- 2x6 WALL AT SANITARY STACKS  
PROVIDE WALL TYPE 2 (2X6 STUDS) TO ALLOW FOR CONCEALED SANITARY STACKS WITHIN STUD CAVITY.
- FEC - FIRE EXTINGUISHER CABINETS  
PROVIDE FULLY RECESSED FIRE EXTINGUISHER CABINETS AT ALL LOCATIONS AS NOTED.
- HORIZONTAL EXIT DOOR  
PROVIDE MAGNETIC HOLD-OPEN ON HORIZONTAL EXIT DOOR TIED TO FIRE SUPPRESSION SYSTEM. DOOR TO BE RELEASED AND AUTO-CLOSE IN CASE OF FIRE. SEE ELEC DWGS.
- SPRINKLER STANDPIPE  
STANDPIPE TO BE PROVIDED IN ACCORDANCE WITH 2018 IBC 905.3 STANDPIPES TO OFFSET AND TURN AS TO NOT PENETRATE RATED STAIR ENCLOSURE.

PERMIT AMENDMENT	03-21-2024
PERMIT COMMENT RESPONSE	07-01-2023
BUILDING PERMIT SUBMISSION	03-13-2023

No: SUBMISSION/REVISION DATE

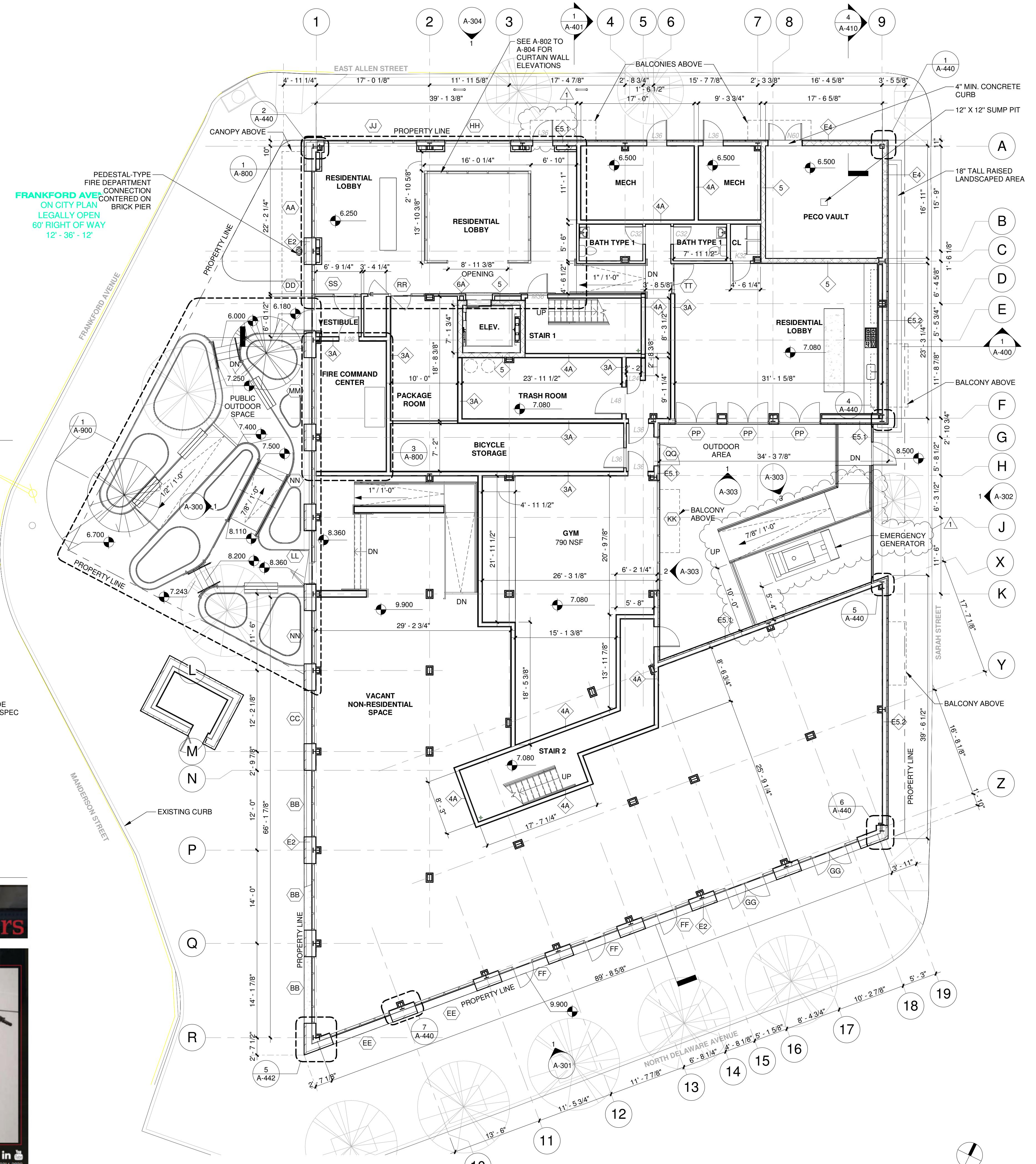
**ONE FRANKFORD**  
1000-10 N. DELAWARE AVE.  
PHILADELPHIA, PA 19125

**CANNO design**  
109 S. 13TH STREET SECOND FLOOR PHILADELPHIA, PA 19107

Drawing Title  
**FIRST FLOOR PLAN**

Date:  
Drawn By: MP  
Checked By: Checker  
Scale: As indicated

**A-200**  
Drawing No.



1 1ST FLOOR PLAN  
1/8" = 1'-0"

## USPS MAILBOXES

**versatile™**  
4C mailboxes & parcel lockers

**14 DOOR HIGH SUITE**  
Actual: 51-1/4" H x 31-9/16" W (Double) or 17-1/2" W (Single) x 17" D  
Rough Opening: 50-5/16" H x 30-5/16" W (Double) or 16-1/4" W (Single) x 17" D

MODEL	WIDTH (IN)	DEPTH (IN)
4C14D-14	31-9/16"	17"

**STANDARD FEATURES**

- Anodized aluminum or powder coat finish (color options below)
- Castled aluminum construction
- 40 name capacity
- D400-1 1/4" H x 9-3/4" W

**COLOR OPTIONS**

- Black (RAL 9005)
- White (RAL 9010)
- Dark Bronze (RAL 8017)
- Light Bronze (RAL 8014)
- Dark Grey (RAL 7024)
- Light Grey (RAL 7023)
- White (RAL 9010)
- White (RAL 9010)

PROVIDE BLACK SPEC FINISH

## BIKE RACKS

**STORAGE LOCKERS & BIKE RACKS**

**WireCrafters**

**Bicycle Wall Rider**

- Strong...made of heavy duty 11 GA (1/8" thick) steel.
- Precision laser cut & formed.
- Easily installs...two 1/2" round holes for wall mounting.
- Hardware not included.
- 6' long, heavy duty 1/4" vinyl coated aircraft quality cable is permanently connected to mounting base for securing stored bicycles. Cable has permanent loop at free end for user's lock. Clear vinyl coating on cable protects bicycle finish during use.

**WireCrafters** (800) 252-2636 | (502) 363-6691 | 6208 STRAWBERRY LANE | LOUISVILLE, KY 40214-2922