



**FOR LEASE**  
**OFFICE SPACE**

**401 CHURCH STREET & 159 4TH AVE FLOOR PLANS**

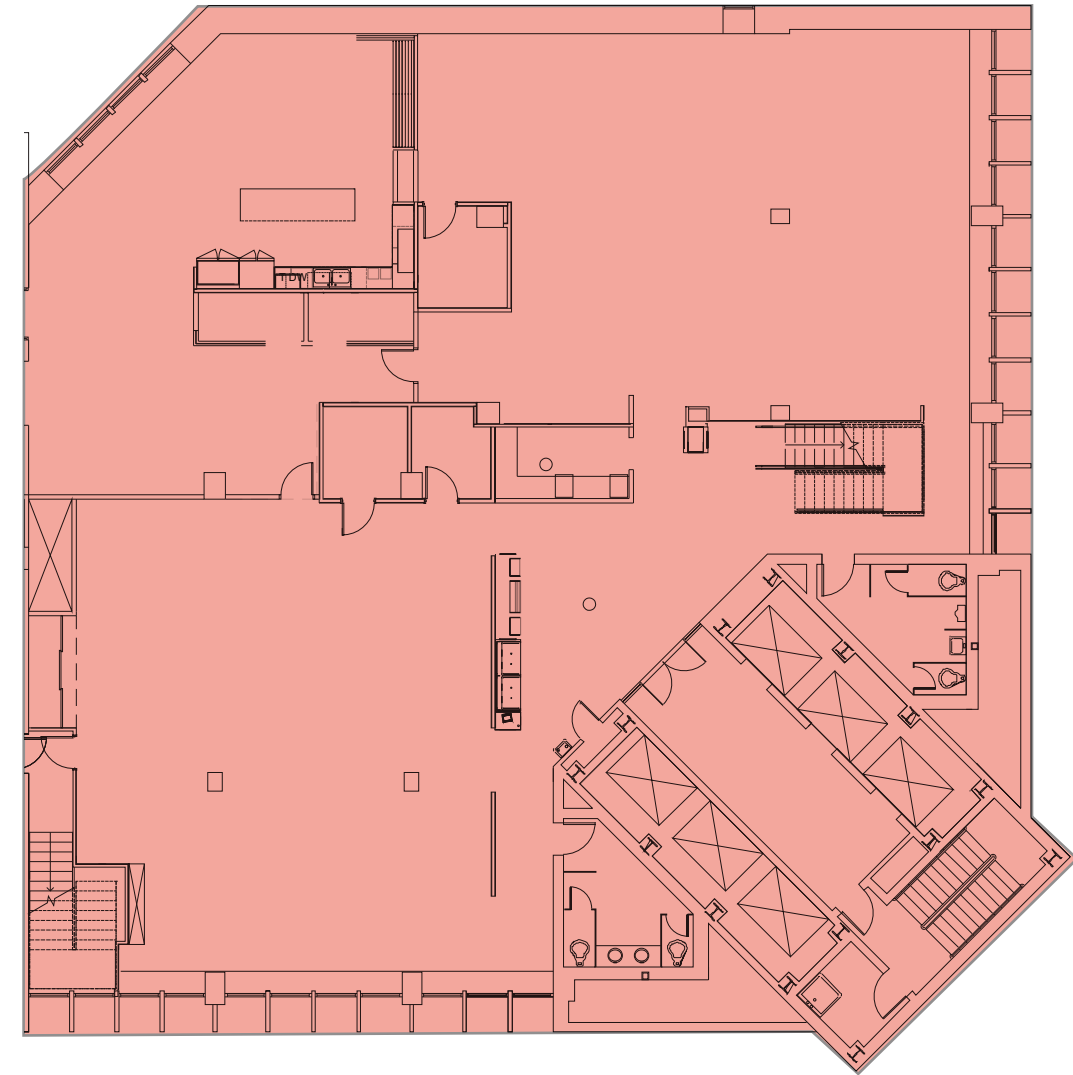




**SUITE 600**  
*\*INTERIOR STAIRWELL*

7,487 SF - 21,867 SF

AVAILABLE NOW





**DAN BAUCHIERO**

Dan.Bauchiero@foundrycommercial.com

615.423.6851

**SHELBY HALL**

Shelby.Hall@foundrycommercial.com

615.771.0770