

# SODO - 6<sup>th</sup> & Lander

2450 6<sup>th</sup> Ave S., Units 29 & 30

Seattle, WA 98134



# FOR LEASE

## Industrial Warehouse

CONTACT:

MARK TEMMEL

(206) 307-5726

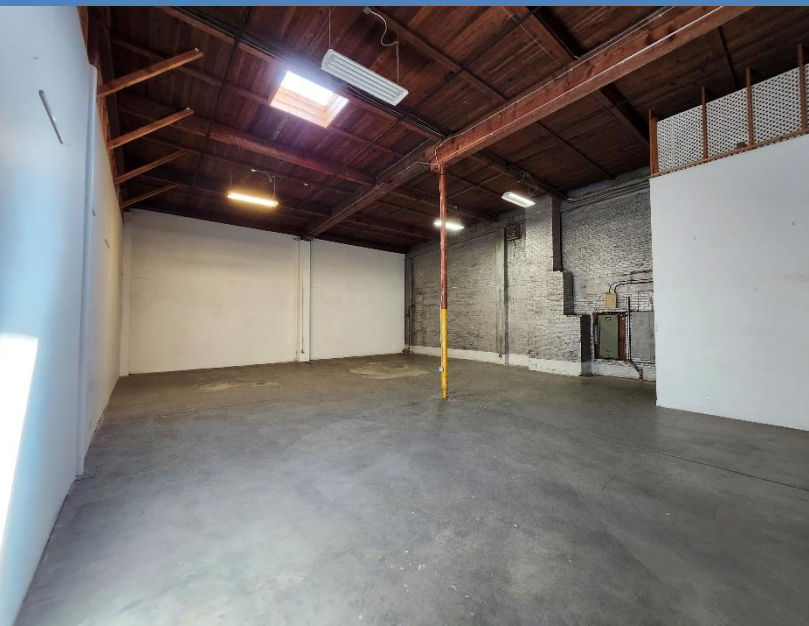
[mark@temmelre.com](mailto:mark@temmelre.com)

Temmel Real Estate

# SPACE DETAILS

Industrial warehouse space available now. Units 29 & 30 is 1,905 sq.ft. (usable) and is sprinklered. The space is roughly 40' x 49' and is accessed via a common hallway. Ceiling height is 20'10" with beams at 18'. Asking rate of \$2,924/month (\$1.25/sq.ft.) + NNN for a total of \$4,164/month. NNN charges include utilities. Located one block from the SODO light rail station. There is free street parking around the building. Easy access to I-5, Hwy 99, and I-90.

## [VIDEO TOUR](#)



<b>Square Feet</b>	<b>2,339 (BOMA)</b>
<b>Base Rent</b>	<b>\$1.25/SF</b>
<b>NNN</b>	<b>0.53¢/SF</b>
<b>Available</b>	<b>Now</b>
<b>Units</b>	<b>29 &amp; 30</b>

