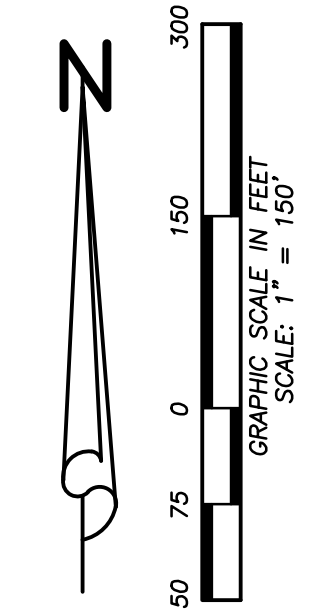
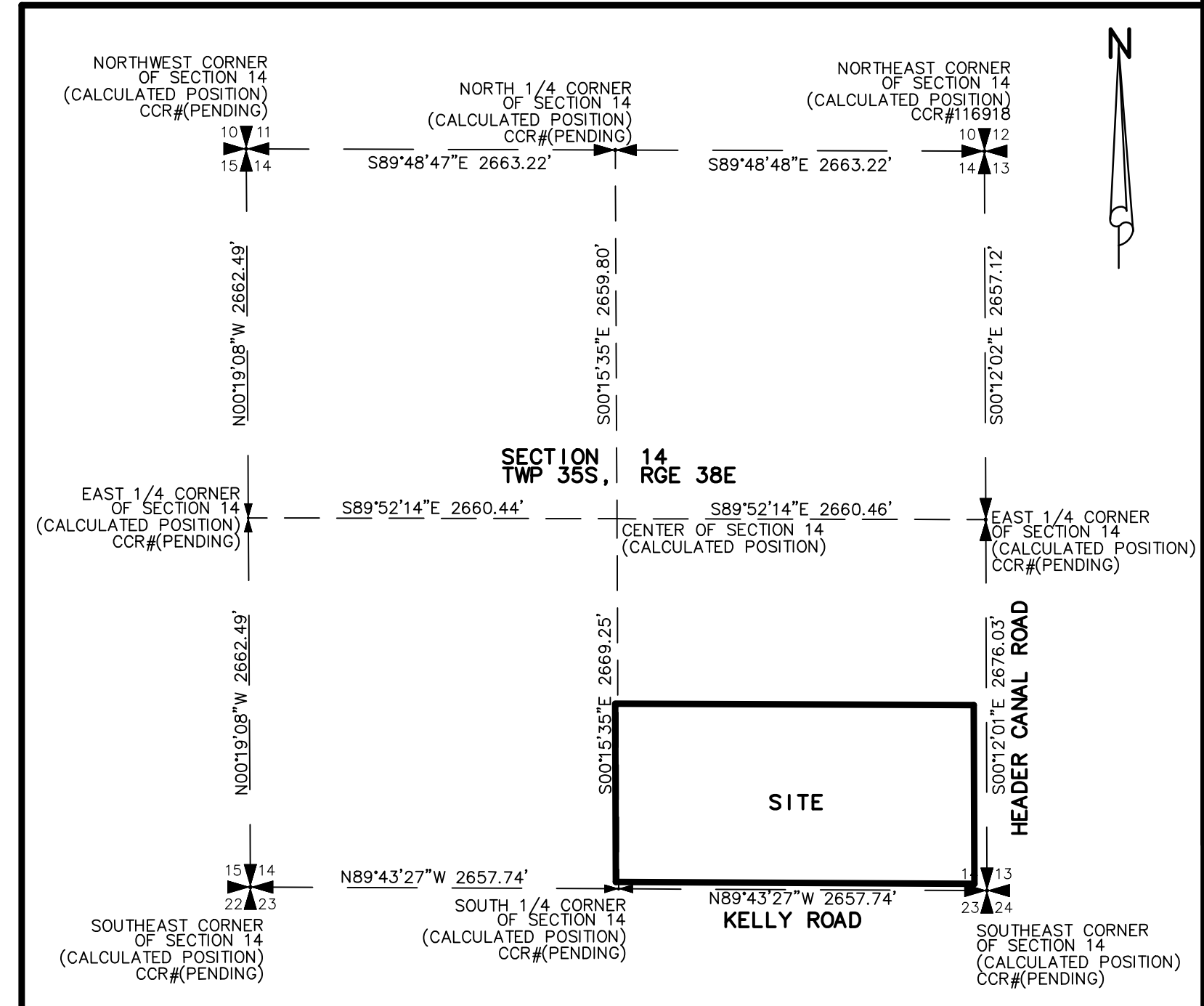
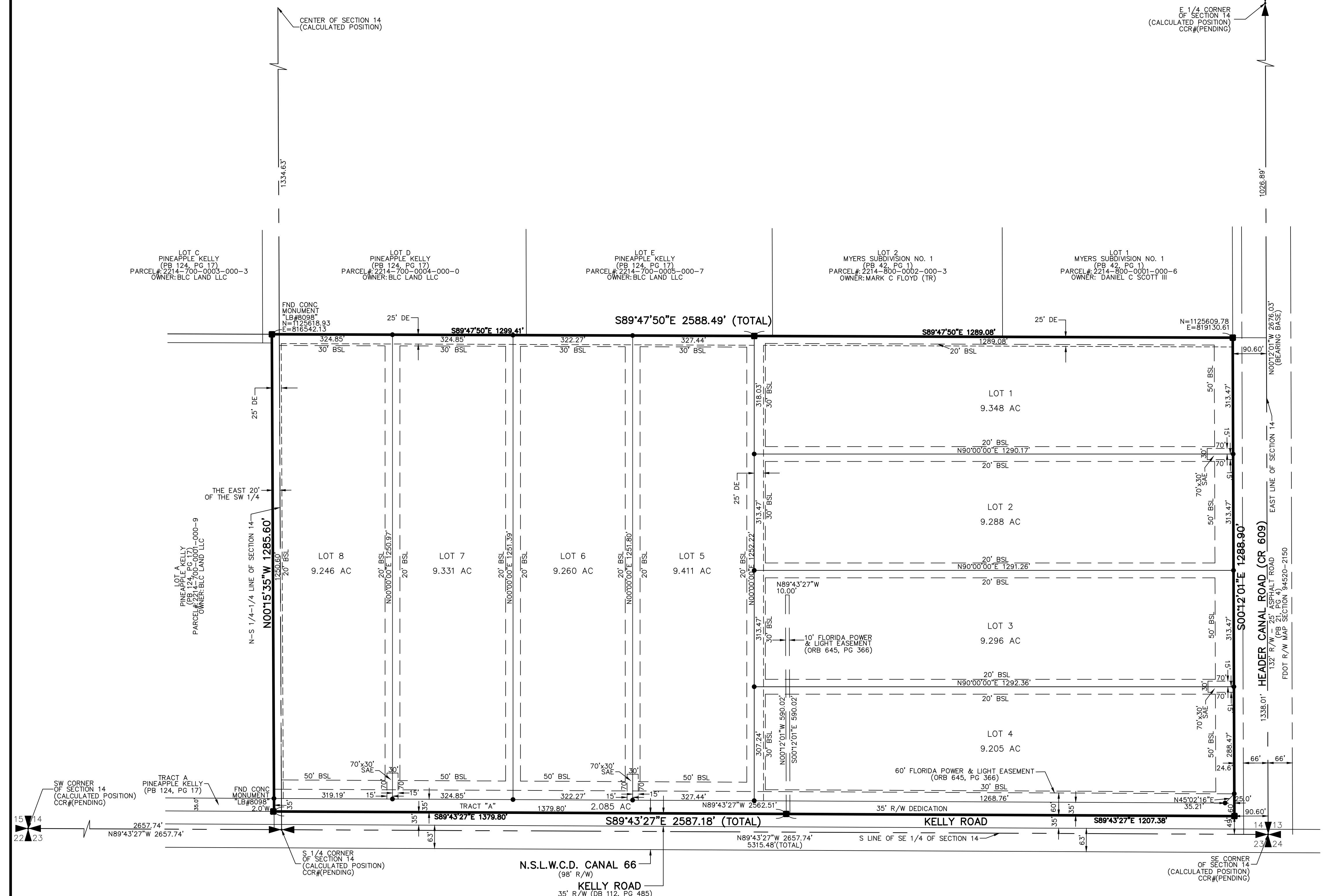


# KELLY HEADER CANAL

SUBDIVISION LYING IN AND BEING A PORTION OF THE SOUTH HALF OF SECTION 14, TOWNSHIP 35 SOUTH, RANGE 38 EAST, ST. LUCIE COUNTY, FLORIDA.



PLAT BOOK: \_\_\_\_\_  
 PAGE: \_\_\_\_\_  
 FILE NO.: \_\_\_\_\_  
 DATE: \_\_\_\_\_  
 TIME: \_\_\_\_\_



- ABBREVIATIONS:**
- (C) = CALCULATED
  - (M) = MEASURED
  - (P) = PLAT
  - (S) = SURVEY
  - AC = ACRES
  - SAE = SHARED ACCESS EASEMENT
  - BSL = BUILDING SETBACK LINE
  - CONC = CONCRETE
  - CS = COMMON SPACE
  - DE = DRAINAGE EASEMENT
  - DB = DEED BOOK
  - E = EASTING
  - FND = FOUND
  - IP = IRON PIPE
  - IR = IRON ROD
  - IRC = SET 5/8" IRON ROD WITH PLASTIC CAP "PRM PSM 6330"
  - LB = LICENSE BUSINESS
  - LBE = LANDSCAPE BUFFER EASEMENT
  - LS = LICENSE SURVEY
  - MON = MONUMENT
  - MSBU = MUNICIPAL SERVICE BENEFIT UNIT
  - MSTU = MUNICIPAL SERVICE TAXING UNIT
  - N = NORTHING
  - ORB = OFFICIAL RECORD BOOK
  - O.S. = OPEN SPACE
  - PB = PLAT BOOK
  - PG = PAGE(S)
  - PL = PROPERTY LINE
  - POB = POINT OF BEGINNING
  - POC = POINT OF COMMENCEMENT
  - PRM = PERMANENT REFERENCE MONUMENT
  - PCP = PERMANENT CONTROL POINT
  - R/W = RIGHT-OF-WAY
  - UE = UTILITY EASEMENT

- SYMBOLS:**
- = SET 5/8" IRON ROD WITH PLASTIC CAP "AJP PSM 6330" UNLESS OTHERWISE NOTED
  - = SET 5/8" IRON ROD WITH PLASTIC CAP "PRM PSM 6330" UNLESS OTHERWISE NOTED
  - ▲ = PERMANENT CONTROL POINT
  - ▲ SET 5/8" IRON ROD WITH PLASTIC CAP "AJP PSM 6330 PCP" UNLESS OTHERWISE NOTED

- BUILDING SETBACKS:**
- FRONT: 50 FEET
  - SIDE: 20 FEET
  - CORNER: 30 FEET
  - REAR: 30 FEET

**CERTIFICATE OF APPROVAL OF THE DEPUTY COUNTY ADMINISTRATOR:**

STATE OF FLORIDA  
 COUNTY OF ST. LUCIE

IT IS HEREBY CERTIFIED THAT THIS PLAT HAS BEEN OFFICIALLY APPROVED FOR RECORD BY THE DEPUTY COUNTY ADMINISTRATOR OF ST. LUCIE COUNTY, FLORIDA, THIS \_\_\_\_\_ DAY OF \_\_\_\_\_ 2025.

BY: \_\_\_\_\_  
 MAYTE SANTAMARIA, DEPUTY COUNTY ADMINISTRATOR II

**CERTIFICATE OF APPROVAL OF THE COUNTY SURVEYOR:**

STATE OF FLORIDA  
 COUNTY OF ST. LUCIE

THE UNDERSIGNED SURVEYOR AND MAPPER DULY LICENSED IN THE STATE OF FLORIDA HAS REVIEWED THIS PLAT FOR THE CONFORMITY WITH THE REQUIREMENTS OF CHAPTER 177, FLORIDA STATUTES.

BY: \_\_\_\_\_  
 ALEXEY GILEV, PSM 7079  
 COUNTY SURVEYOR

NOTICE: THE CURRENT AND FUTURE OWNERS AND THEIR HEIRS/ASSIGNS AGREE TO PARTICIPATE AND SHALL BE A "YES" VOTE IN ANY LAWFULLY ESTABLISHED MSTU, MSBU OR OTHER SPECIAL ASSESSMENT DISTRICT CREATED FOR THE PURPOSE OF PROVIDING PAVING AND/OR DRAINAGE IMPROVEMENTS TO KELLY ROAD.

**PREPARED IN THE OFFICE OF:**

**ALEXANDER J. PIAZZA PSM, INC.**  
 619 SW BILTMORE STREET  
 PORT ST. LUCIE, FLORIDA 34983  
 CERTIFICATION NO. LB 7280  
 ALEXANDER J. PIAZZA PSM  
 PROFESSIONAL SURVEYOR AND MAPPER  
 FLORIDA CERTIFICATE NO. 6330

**ALEXANDER J. PIAZZA PSM, INC.**  
 Surveying • Mapping • Consulting  
 619 SW Biltmore Street  
 Port St. Lucie, Florida 34983  
 Phone: (772) 340-7770  
 Fax: (772) 340-2250  
**LB#7280**

CAD	K:\REDTAIL\KELLY ROAD\24-2963PLAT.DWG			
REF	K:\REDTAIL\KELLY ROAD\24-2963.DWG			
FLD	CJM/AJP	FB.	PG.	JOB 24-2963PLAT
OFF	LW			DATE 9-16-25
CKD	AJP	SHEET 2	OF 2	DWG D-1079