

# 4200 | WILDWOOD PARKWAY



**4200** | WILDWOOD  
PARKWAY

18,694 - 275,000 SF



Efficient floor plates



Training Room



Conference Center



Lounge and gaming area



18 EV chargers



Large outdoor seating area



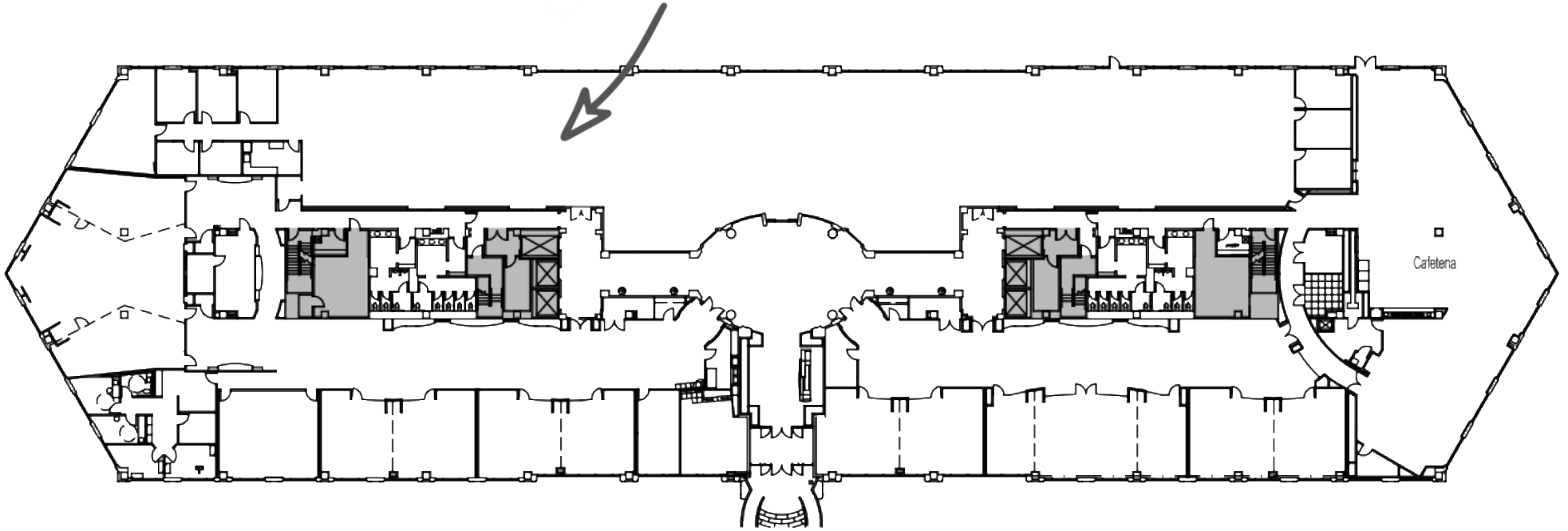
On-site cafeteria and grab & go café



1,000 car parking + covered garage

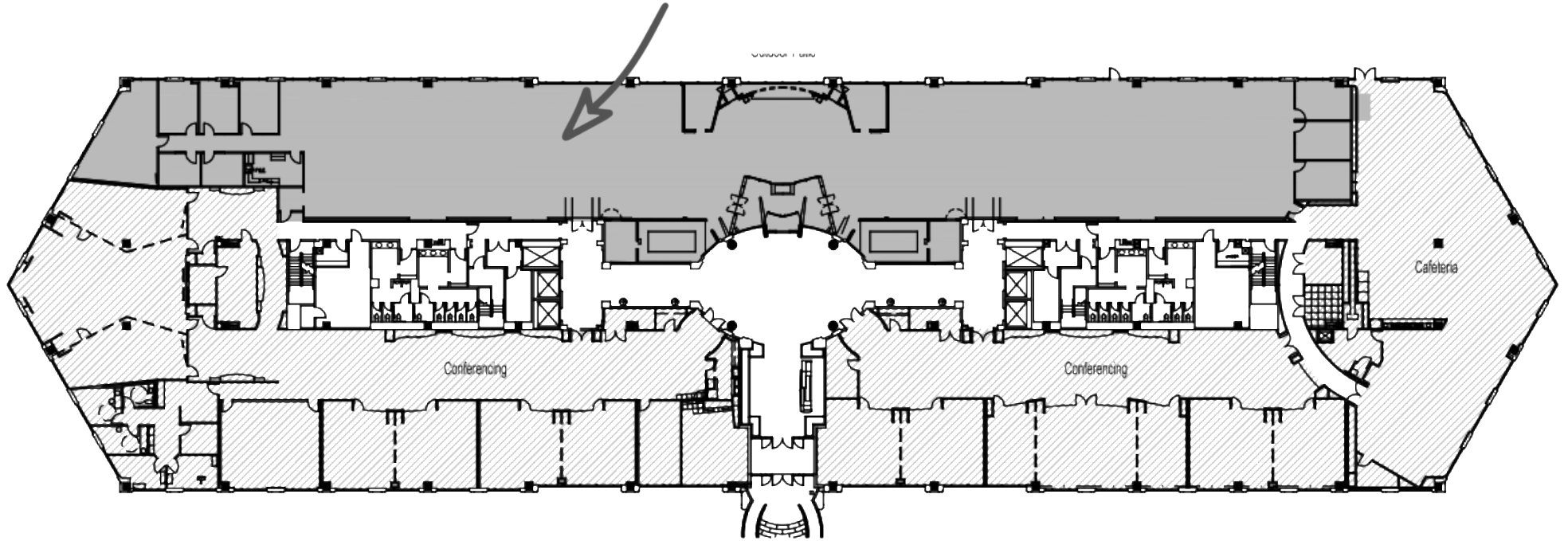
# First Floor • Full Floor

55,000 SF

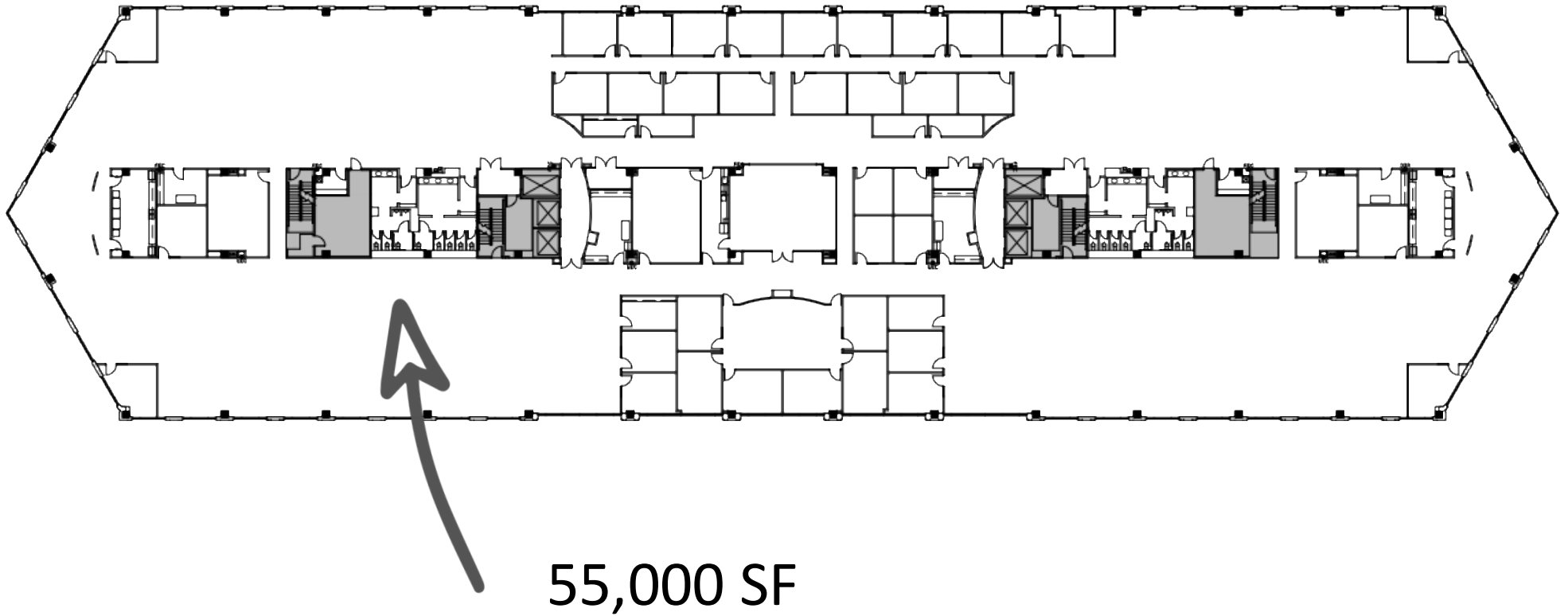


# First Floor • Suite A

18,694 SF

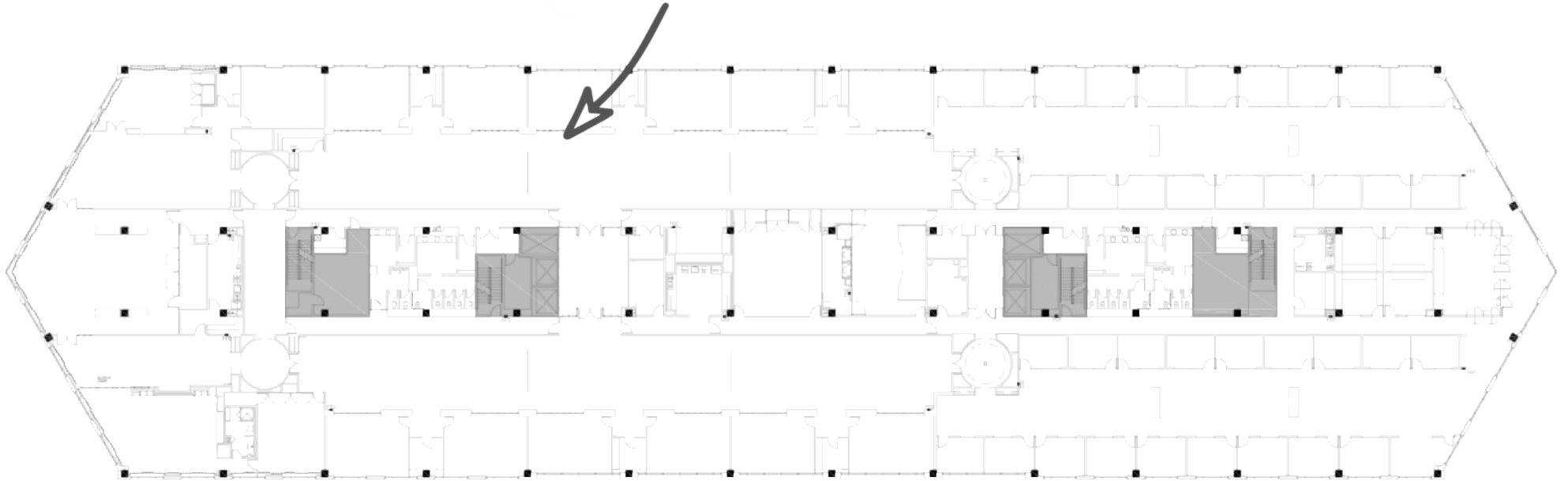


# Second-Fourth Floor



# Fifth Floor

55,000 SF





4200 WILDWOOD  
PARKWAY



**workspace**  
property management

Tony Nichols  
Senior Vice President, Leasing  
267.716.5438  
[tnichols@workspaceproperty.com](mailto:tnichols@workspaceproperty.com)



4200 WILDWOOD  
PARKWAY

