

# 55 John Street

FINANCIAL DISTRICT  
NEW YORK, NY

NEWMARK

www.studenthousing.org

Street  
ice

NO STANDING  
OR STOPPING  
Vehicles  
Except  
as Indicated  
by Signs



## 55 JOHN STREET

# Property Details

### Location

North block between Dutch and William Streets

### Approximate Size

Ground Floor 2,476 SF

### Term

Negotiable

### Frontage

32 FT on John Street

### Ceiling Height

Ground Floor 15 FT

### Possession

Immediate

### Site Status

Formerly Urban 55 Market

### Neighbors

Orangetheory Fitness, Mezeh, Chop & Go, Apollo Bagels, Joe's Pizza, Jersey Mike's, FedEx, Blank Street Coffee, Shake Shack, Starbucks, Smarter Toddler Nursery & Preschool and Sweat 440

### Comments

Second generation non-cooking restaurant space

Venting is possible, there is gas in the building

In close proximity to the Fulton Street Transit Hub servicing the 2, 3, 4, 5, A, C, J and Z subway lines with 21 million annual ridership

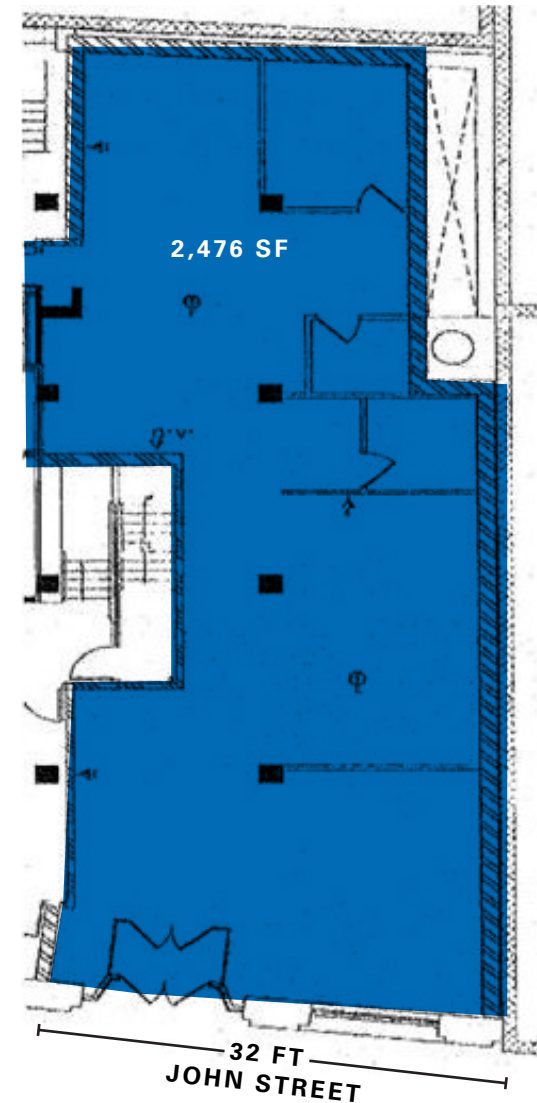
Located in the heart of the Financial District with a strong mix of office workers, residents and tourists

Double-height storefront

Located at the base of a 520-bed Pace University dormitory

Most uses considered

### Ground Floor



55 JOHN STREET



CONTACT

**Andrew Stern**  
 t 212-351-9353  
 andrew.stern@nmrk.com

**Ravi Idnani**  
 t 212-916-2938  
 ravi.idnani@nmrk.com

[nmrk.com](http://nmrk.com)