

6350 Laurel Canyon Blvd, North Hollywood, CA 91606
Office Building in Prime Location



HIGHLIGHTS

- Four-story office building;
- 52,900 RSF;
- 110 covered and 32 surface parking spaces;
- Walking distance to shopping, dining, and services;
- Quick access to the 170 & 101 Freeways;
- Natural Light with large windows throughout provide bright, open workspace.



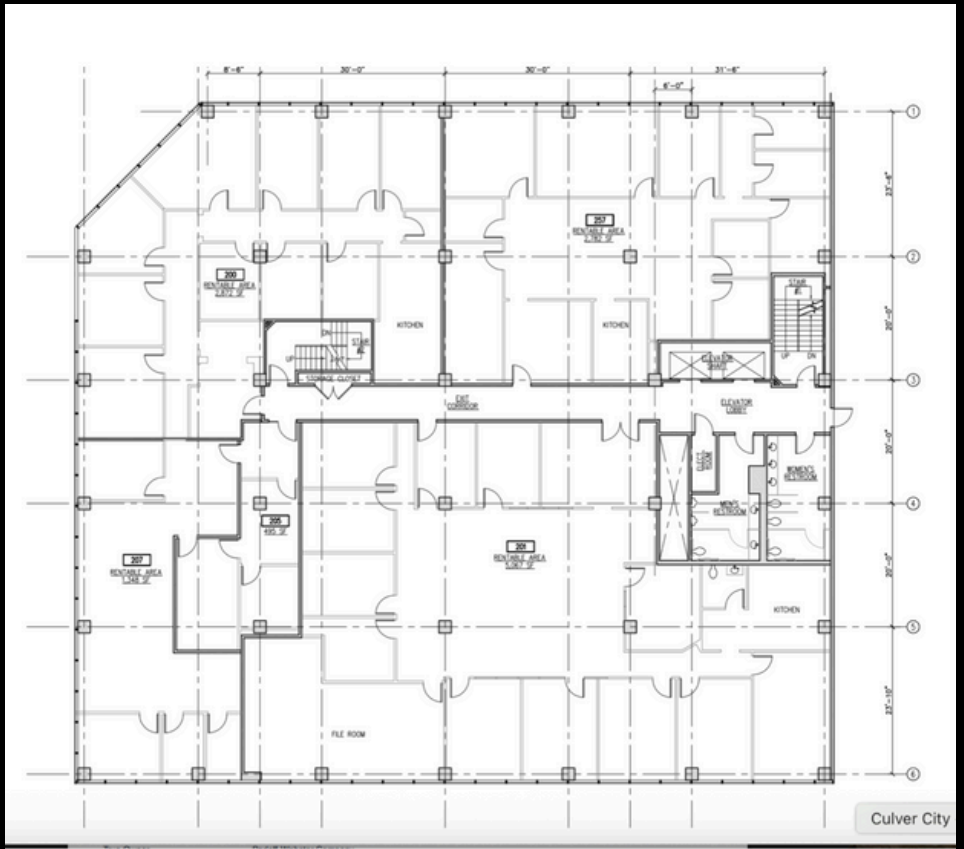
COMMERCIAL
BROKERS
INTERNATIONAL

11766 WILSHIRE BOULEVARD, SUITE 1120,
LOS ANGELES, CA 90025
(310) 943-8530
INFO@CBICOMMERCIAL.COM
CA DRE #01523713



Monique Lacey

(310)943.8544
monique@cbi-commercial.com
DRE #02085900



2nd Floor ~ Suite 200 **2,872 RSF**



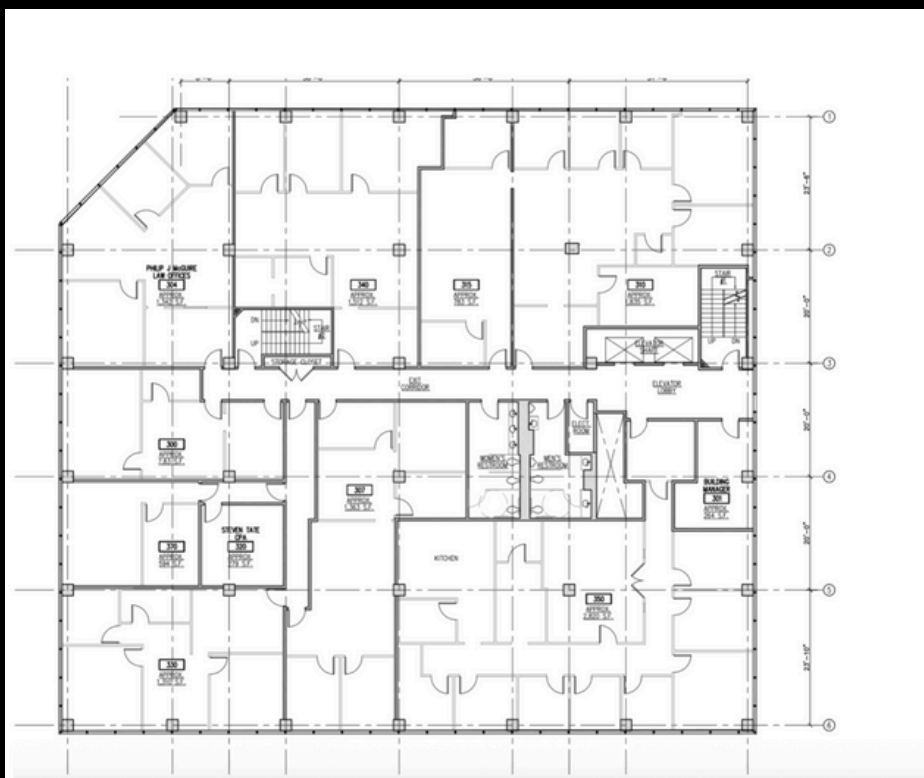
COMMERCIAL
BROKERS
INTERNATIONAL

11766 WILSHIRE BOULEVARD, SUITE 1120,
LOS ANGELES, CA 90025
(310) 943-8530
INFO@CBICOMMERCIAL.COM
CA DRE #01523713



Monique Lacey

(310)943.8544
monique@cbi-commercial.com
DRE #02085900



3rd Floor ~ Suite 310 **1,835 RSF**



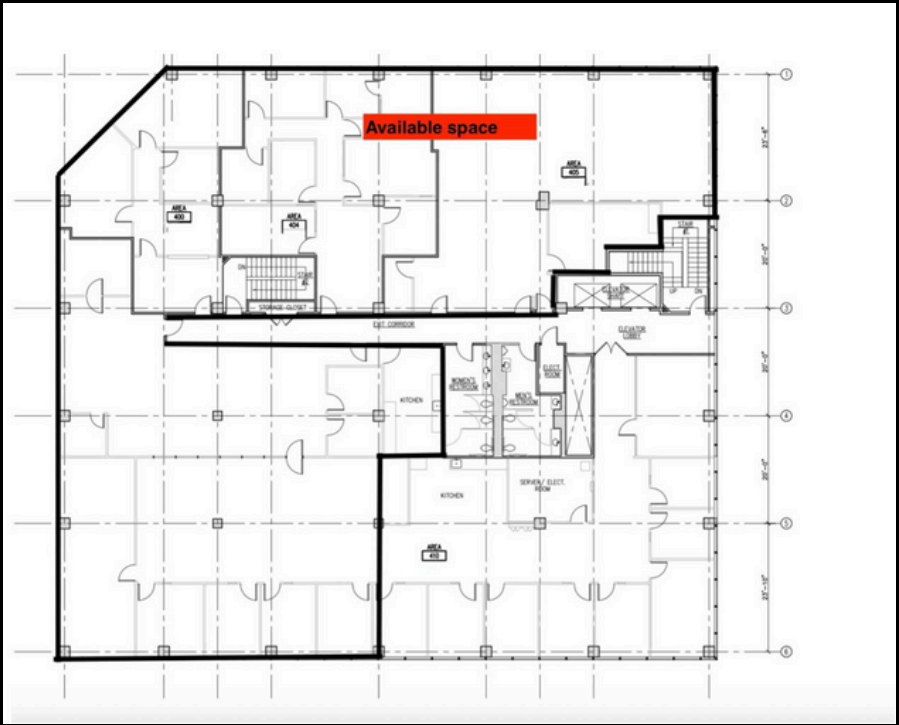
COMMERCIAL
BROKERS
INTERNATIONAL

11766 WILSHIRE BOULEVARD, SUITE 1120,
LOS ANGELES, CA 90025
(310) 943-8530
INFO@CBICOMMERCIAL.COM
CA DRE #01523713



Monique Lacey

(310)943.8544
monique@cbi-commercial.com
DRE #02085900



4th Floor ~ Suite 400* 1,181 RSF

Suite 404* 1,759 RSF

Suite 405* 2,243 RSF

Suite 408* 4,829 RSF

***Contiguous**



COMMERCIAL
BROKERS
INTERNATIONAL

11766 WILSHIRE BOULEVARD, SUITE 1120,
LOS ANGELES, CA 90025
(310) 943-8530
INFO@CBICOMMERCIAL.COM
CA DRE #01523713



Monique Lacey

(310)943.8544
monique@cbi-commercial.com
DRE #02085900