

A photograph of a commercial building's exterior. The building has a brick base with a blue metal awning over the entrance. The address "8205" is visible above the glass door. The upper portion of the building is clad in light-colored vertical metal siding. The sky is clear and blue, and trees with autumn foliage are visible in the background.

8205 B&G COURT

8205 B&G COURT STOKESDALE, NC 27357

±10,000 SF FLEX SPACE FOR LEASE OR SALE

8205 B&G COURT

FLEX SPACE FOR LEASE OR SALE

BUILDING FEATURES

ADDRESS	8205 B&G Court
CITY	Stokesdale
STATE	North Carolina
COUNTY	Guilford
DATE AVAILABLE	Immediately
LEASE RATE/PURCHASE PRICE	Call for pricing
TICAM	Call for pricing
TAX PARCEL ID #	167650
NUMBER OF ACRES	1.64
BUILDING TYPE	Flex
ZONING	Light Industrial (LI) ZONING LINK
NUMBER OF BUILDINGS	One (1)
BUILDING DIMENSIONS	100' X 100'
TOTAL SF	10,000 SF
AVAILABLE SF	10,000 SF
OFFICE SF	2,096 SF
	Spray booths are removable
YEAR BUILT	2011
LOADING CONFIGURATION	Front Load

EXTERIOR WALL MATERIAL	Metal & Masonry
ROOF MATERIAL	Metal
TRUCK COURT DEPTH	87'
CEILING HEIGHT	18'
DOCK HIGH DOORS	One (1) 8' x 9'
DRIVE-IN DOORS	One (1) 12' x 14'
ELECTRICAL CAPACITY	400A/120V
HVAC	Fully conditioned; New 2026
SECURITY SYSTEM	Yes



JORDAN RIVES
 Foundry Commercial
 (336) 688 4702
 jordan.rives@foundrycommercial.com

JASON HORTON
 NC Justified Holdings, LLC
 (336) 300-0887
 jason.NCJH@gmail.com

FOUNDRY
 COMMERCIAL

NCJH
 NC JUSTIFIED
 HOLDINGS LLC

Although the information contained herein was provided by sources believed to be reliable, Foundry Commercial makes no representation, expressed or implied, as to its accuracy and said information is subject to errors, omissions or changes.

8205 B&G COURT

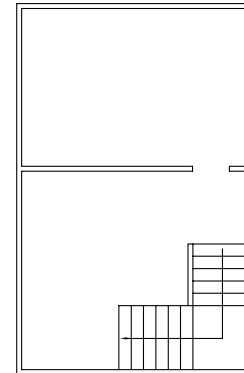
FLEX SPACE FOR LEASE OR SALE

FLOOR PLAN

±10,000 SF



2ND FLOOR



JORDAN RIVES
Foundry Commercial
(336) 688 4702
jordan.rives@foundrycommercial.com

JASON HORTON
NC Justified Holdings, LLC
(336) 300-0887
jason.NCJH@gmail.com

FOUNDRY
COMMERCIAL

NCJH
NC JUSTIFIED
HOLDINGS LLC

8205 B&G COURT

FLEX SPACE FOR LEASE OR SALE



JORDAN RIVES
Foundry Commercial
(336) 688 4702
jordan.rives@foundrycommercial.com

JASON HORTON
NC Justified Holdings, LLC
(336) 300-0887
jason.NCJH@gmail.com

Although the information contained herein was provided by sources believed to be reliable, Foundry Commercial makes no representation, expressed or implied, as to its accuracy and said information is subject to errors, omissions or changes.

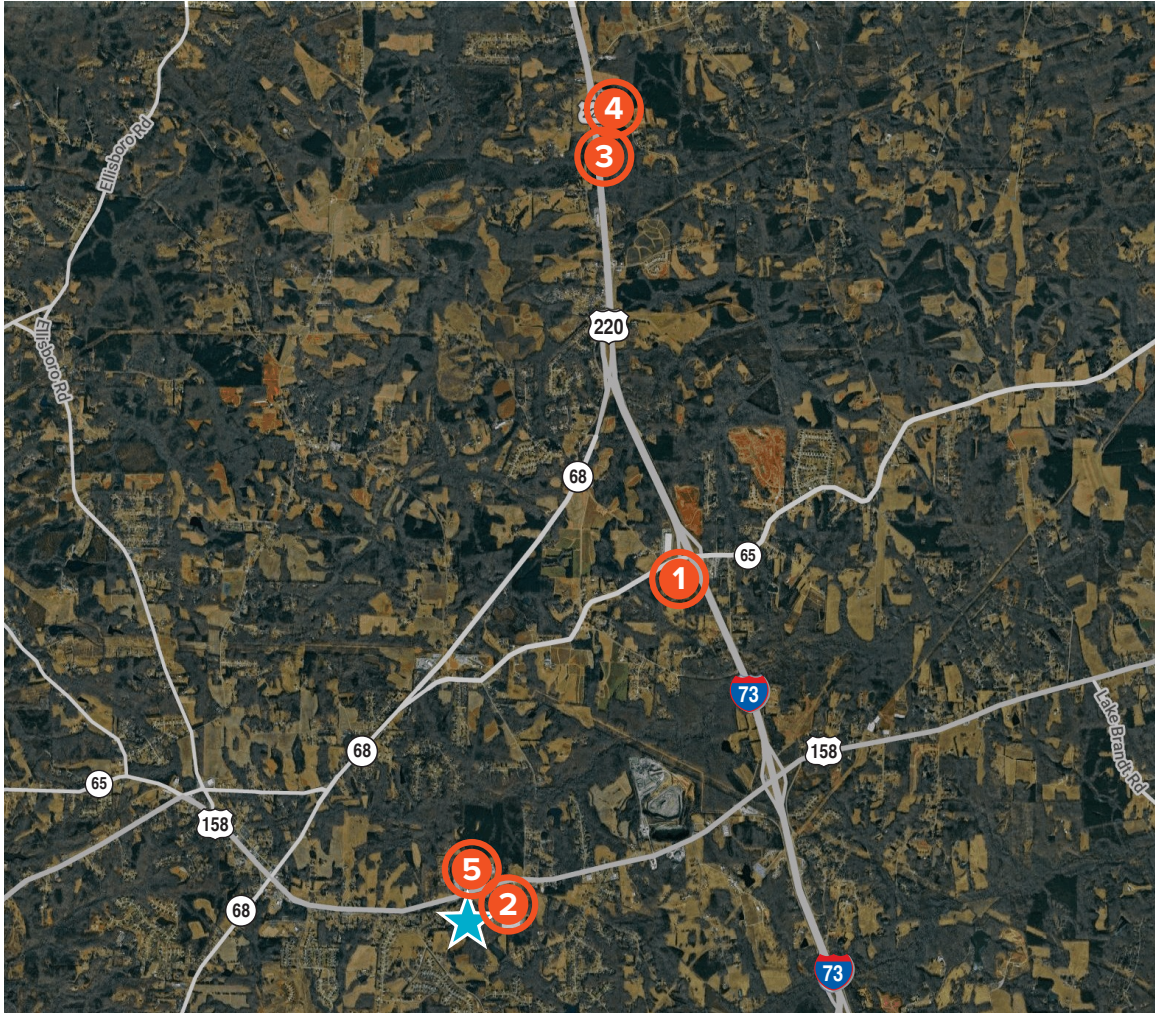
FOUNDRY
COMMERCIAL

NCJH
NC JUSTIFIED
HOLDINGS LLC

8205 B&G COURT

FLEX SPACE FOR LEASE OR SALE

NEARBY INDUSTRIAL EMPLOYERS



- ★ **8203 B&G COURT**
- ① **ONTEX OPERATIONS, USA**
- ② **CULP TICKING**
- ③ **SOUTHERN SPRING AND STAMPING**
- ④ **KALO FOODS**
- ⑤ **ENDURA PRODUCTS**

JORDAN RIVES
Foundry Commercial
(336) 688 4702
jordan.rives@foundrycommercial.com

JASON HORTON
NC Justified Holdings, LLC
(336) 300-0887
jason.NCJH@gmail.com

Although the information contained herein was provided by sources believed to be reliable, Foundry Commercial makes no representation, expressed or implied, as to its accuracy and said information is subject to errors, omissions or changes.

FOUNDRY
COMMERCIAL

NCJH
NC JUSTIFIED
HOLDINGS LLC





8205 B&G COURT

FLEX SPACE FOR LEASE OR SALE

LOCATION & ACCESS

INTERSTATES

Uninterrupted distribution to every major market in the United States

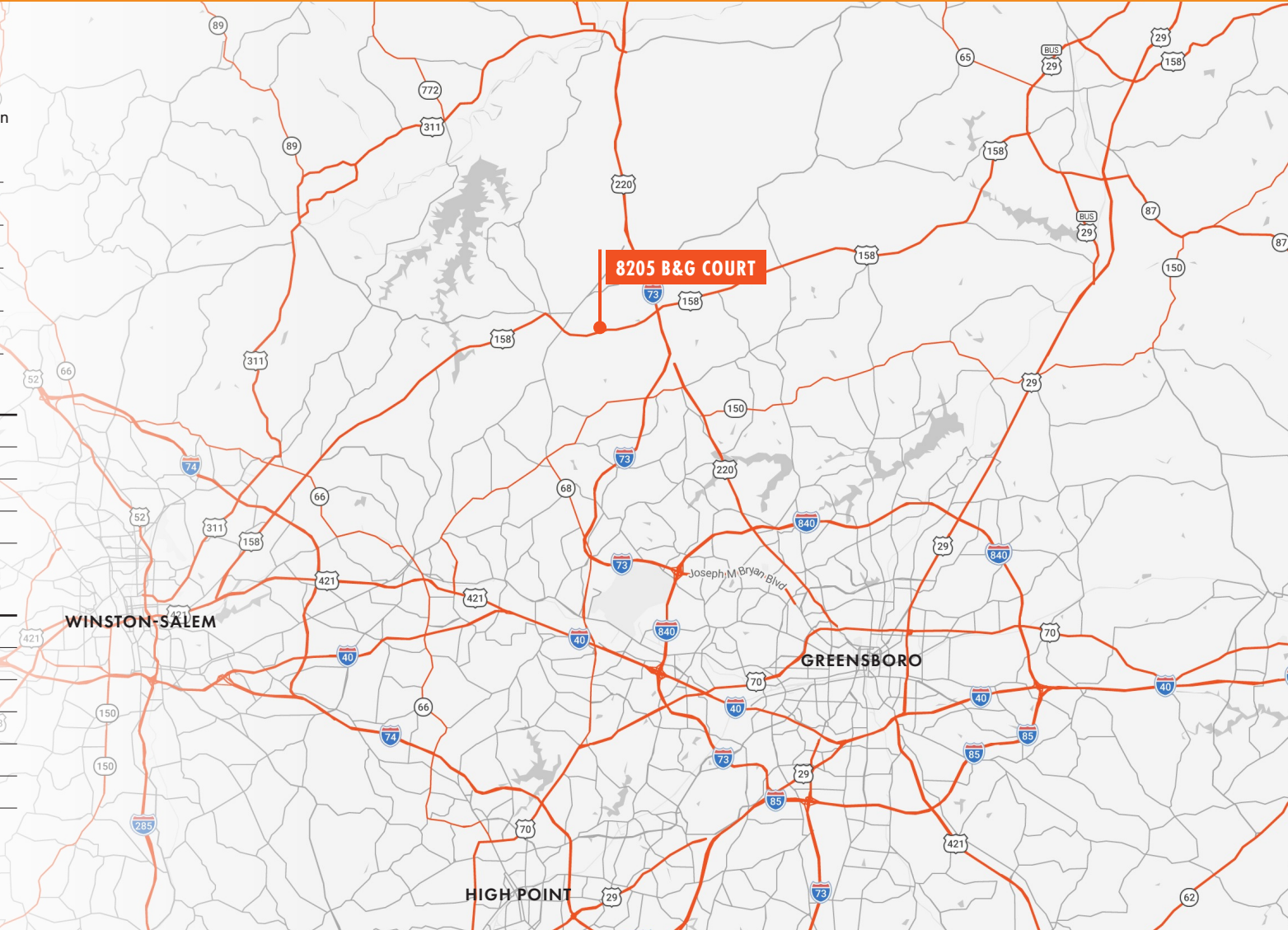
 Interstate 73	2 miles
 Interstate 40	5 miles
 Interstate 85	15 miles
 Interstate 74	20 miles

AIRPORTS

Piedmont Triad International	12 miles
Raleigh-Durham International	85 miles
Fayetteville Regional	105 miles
Charlotte Douglas International	100 miles

SEAPORTS

Wilmington, NC	225 miles
Morehead City, NC	240 miles
Norfolk, VA	255 miles
Charleston, SC	280 miles
Savannah, GA	320 miles
Jacksonville, FL	460 miles



JORDAN RIVES

Foundry Commercial
(336) 688 4702
jordan.rives@foundrycommercial.com

JASON HORTON

NC Justified Holdings, LLC
(336) 300-0887
jason.NCJH@gmail.com

FOUNDRY
COMMERCIAL

NCJH
NC JUSTIFIED
HOLDINGS LLC