

LAWTON, OK

NEC of Flower Mound Rd & Gore Blvd. Lawton, OK 73501



SALE PRICE:

Contact Advisor for Pricing

AVAILABLE SPACE:

1.0 - 64 AC

PROPERTY HIGHLIGHTS:

- » Prime signalized hard corner at Flower Mound Rd & Gore Blvd
- » Land site with multiple pad development opportunities
- » Ability to subdivide pads or purchase entire tract
- » Excellent visibility and frontage on two major throughfares
- » Ideal for retail, restaurant, or mixed-use development
- » High-growth corridor with three national retailers developing new construction stores along E Gore Blvd.

LOCATION:

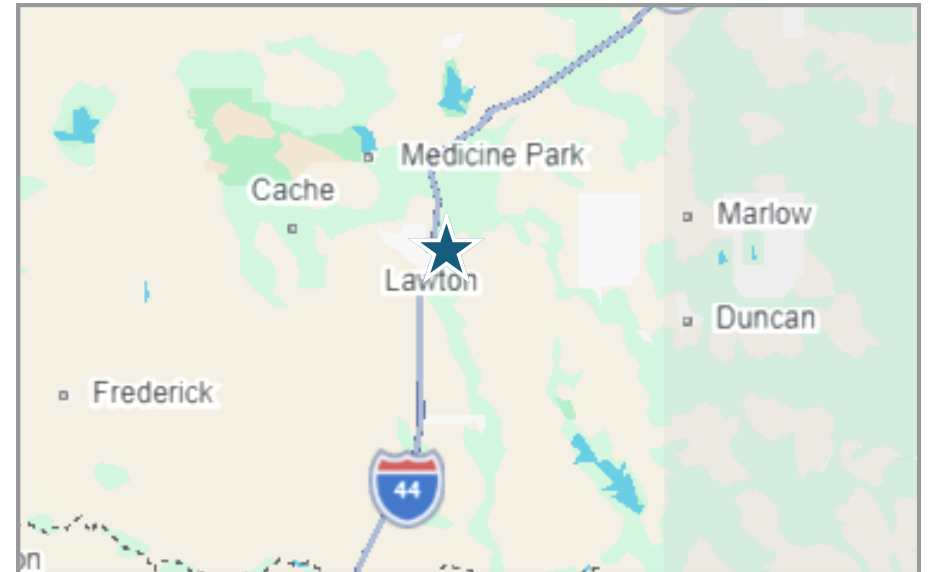
NEC of Flower Mound Rd & Gore Blvd.
Lawton, OK 73501

TRAFFIC COUNTS:

E Gore Blvd: 16,673 VPD ('25)
Southeast Flower Mound Rd: 4,776 VPD ('25)

DEMOGRAPHICS:

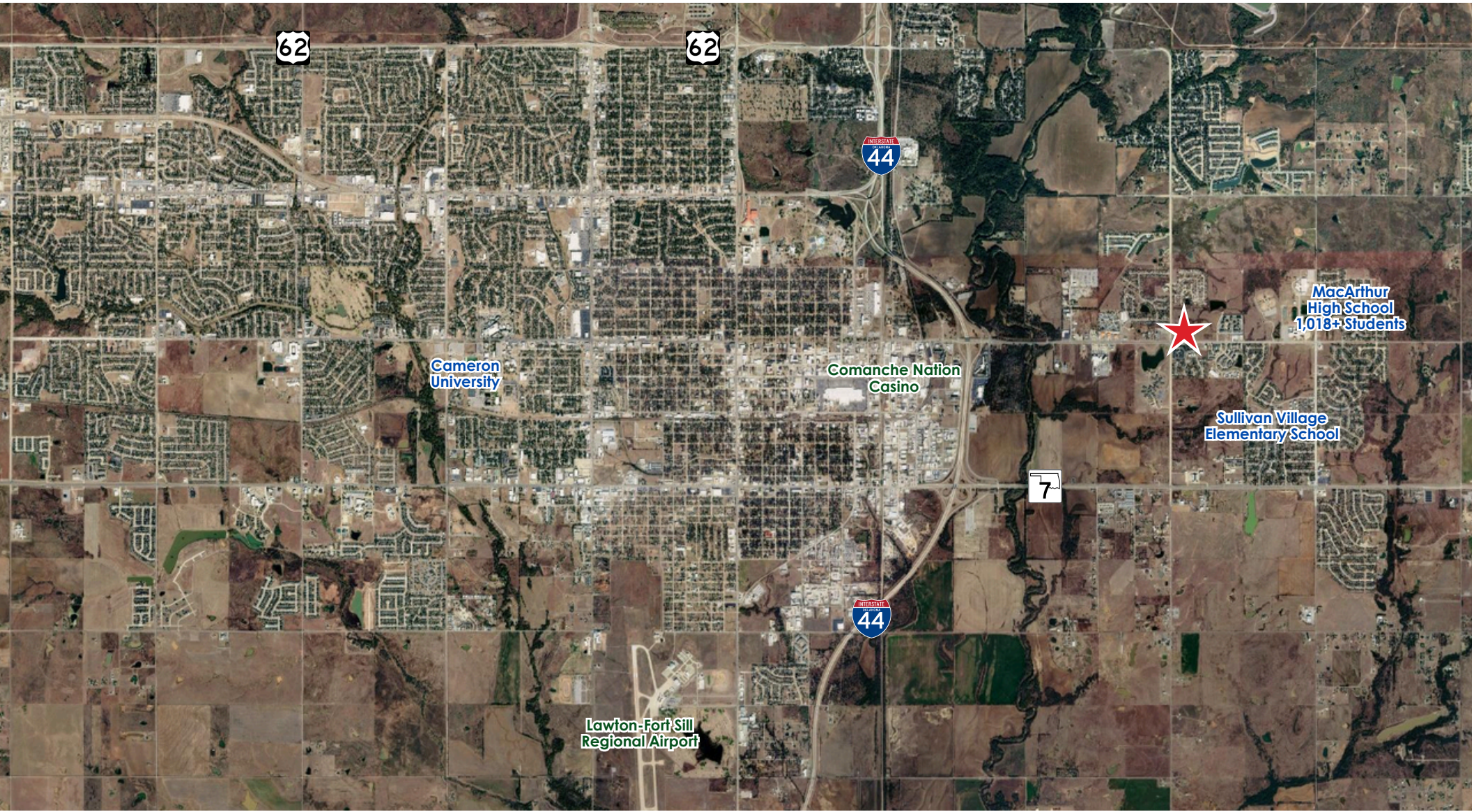
	1 Mile	3 Miles	5 Miles
2024 Population	4,372	20,340	58,299
Avg Household Income	\$70,718	\$70,469	\$55,084
Daytime Employment	1,310	10,205	24,949



PLAINS

Commercial Real Estate

1.0 - 64 AC - WILL DIVIDE | FOR SALE
NEC of Flower Mound Rd & Gore Blvd. Lawton, OK 73501



GRANT HUDIBURG // (405) 802-9200 // GRANT.HUDIBURG@PLAINSCRE.COM
COLBY VANHOOSER // (405) 693-8140 // COLBY.VANHOOSER@PLAINSCRE.COM

The information contained herein is deemed reliable; however, no warranties, guarantees or representations are made as to the accuracy thereof. The presentation of this information is submitted subject to change in conditions, price, corrections, errors, omissions, and/or withdrawal without notice.