

# FOR LEASE

2,000 SF OFFICE



505 BELLE HALL PARKWAY 201 UNIT, Mount Pleasant, SC 29464



## PROPERTY DESCRIPTION

This is a second floor office suite with elevator access. The space offers an open area for up to 6 teammates and 5 private perimeter offices, all with generous windows. The space is thoughtfully designed and finely appointed, creating a professional and inviting atmosphere. The building is a two-story brick structure with a refined appearance. The location is moments away from several shopping centers that include Grocery stores, a Starbucks and a Chic-fil-a.

Tenant is responsible for CAM, taxes and insurance currently assessed at \$10.24 per square foot, in addition to electricity and janitorial services. Contact Listing Agent for more information or to schedule a tour.

## THE OFFERING

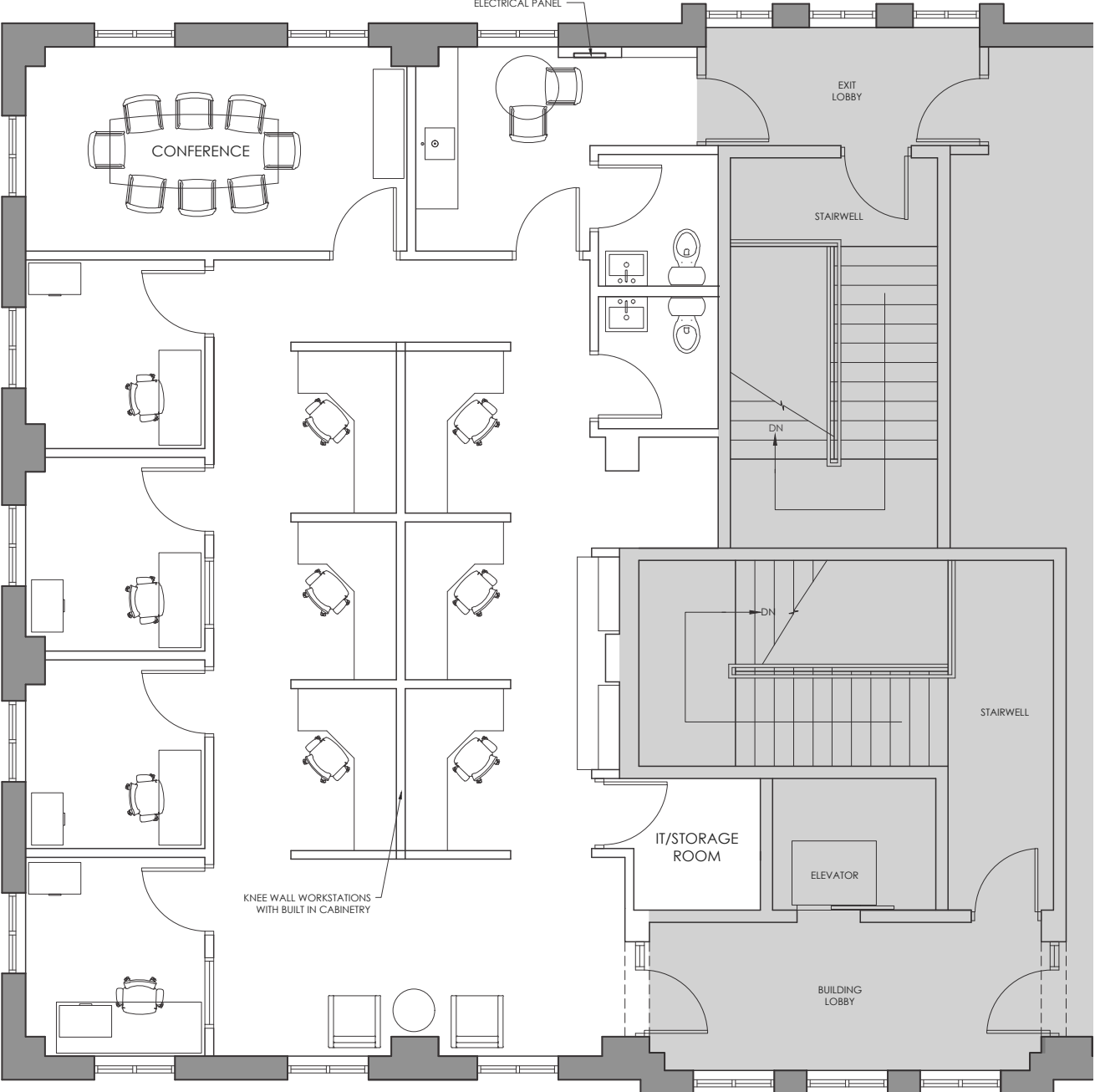
UNIT	SIZE	LEASE RATE	AVAILABLE
201	2,000 SF	\$24 PSF NNN	6/1/26

## PROPERTY SPECS

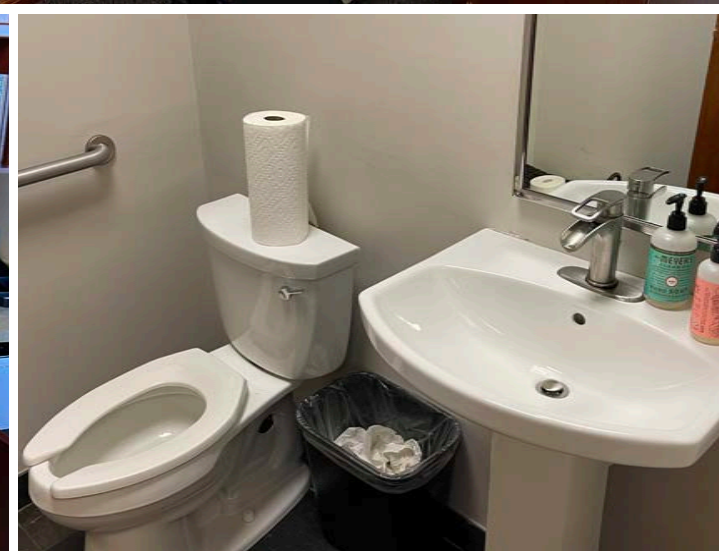
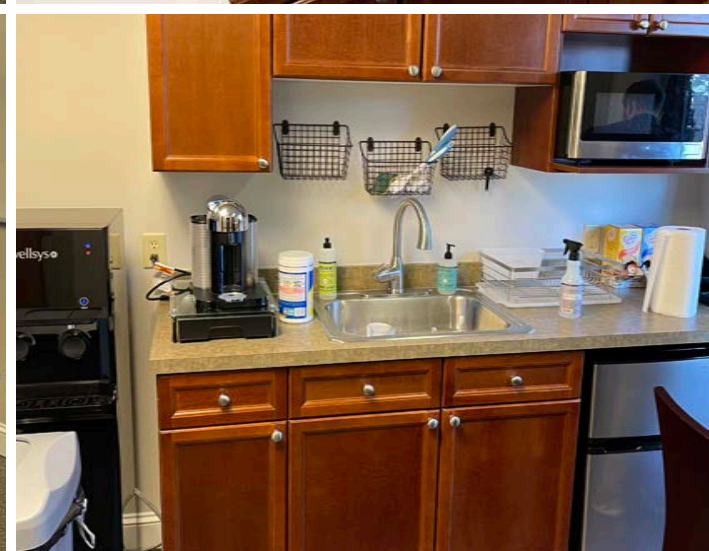
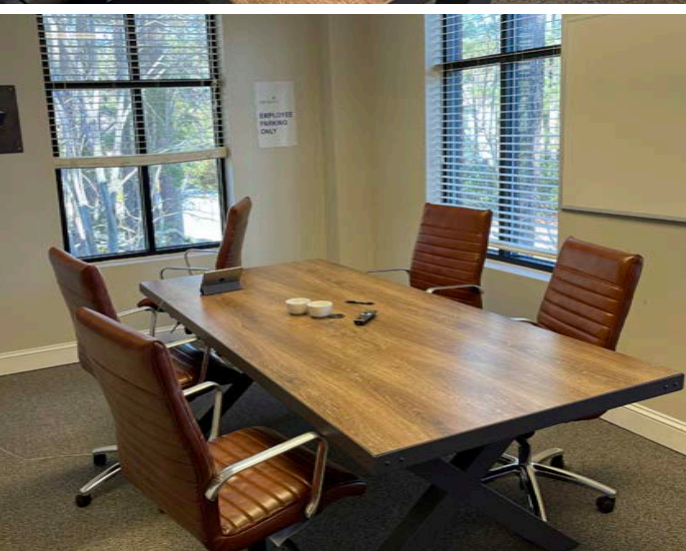
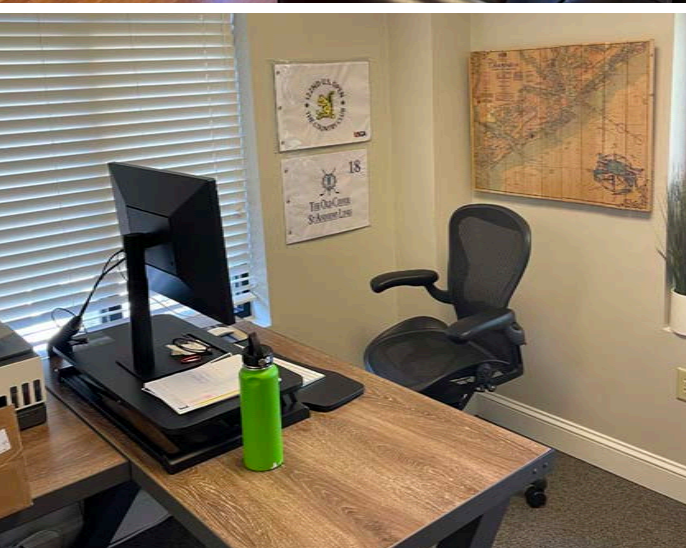
SPACE AVAILABLE	2,000 SF
BUILDING SIZE	8,000 SF
LEASE PRICE	\$24 PSF
TAX ID/APN	537-00-00-268
COUNTY	Charleston
FLOOR	2
YEAR BUILT	2006
PARKING	Surface
ZONING	General Business
CONSTRUCTION	Existing
ELEVATOR	Yes

# FLOOR PLAN

505 BELLE HALL PARKWAY UNIT 201, Mount Pleasant, SC 29464

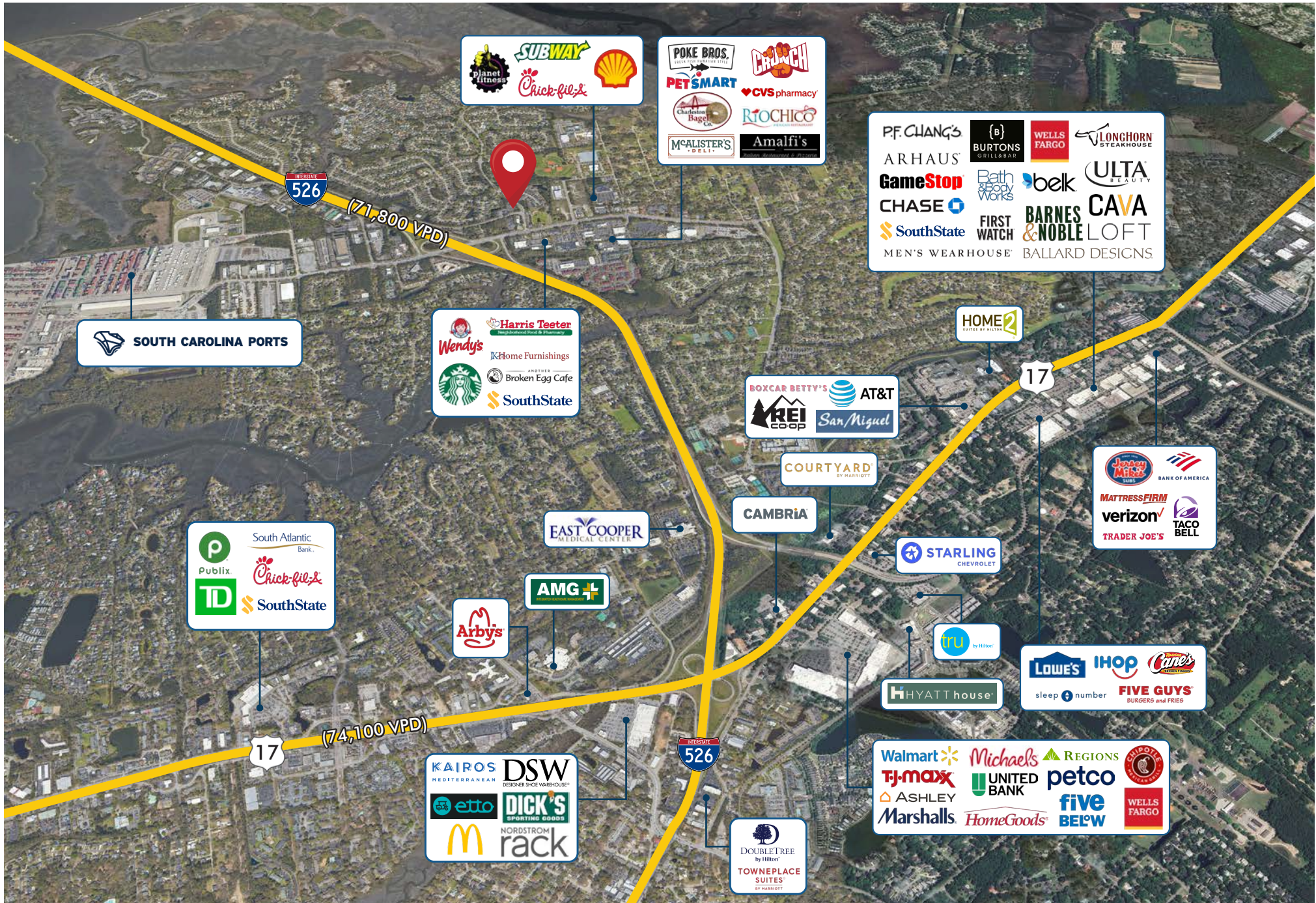






# AMENITIES MAP

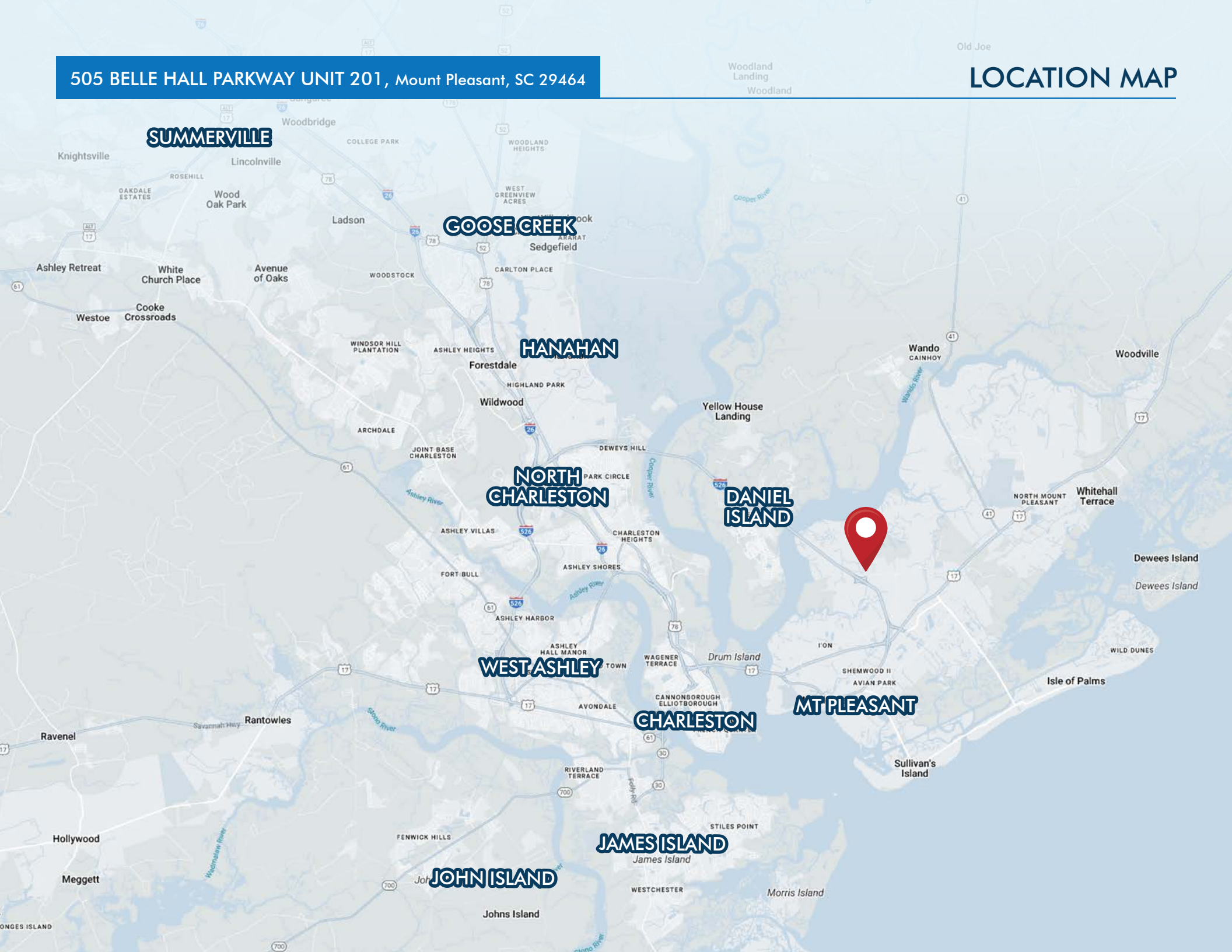
505 BELLE HALL PARKWAY UNIT 201, Mount Pleasant, SC 29464



505 BELLE HALL PARKWAY UNIT 201, Mount Pleasant, SC 29464

Old Joe

# LOCATION MAP





## LEASING CONTACTS:

Jeremy N. Willits  
Senior Vice President  
843.270.9205  
jeremy.willits@  
harborcommercialpartners.com

Gerry Schauer, CCIM  
Partner  
843.364.2055  
gerry.schauer@  
harborcommercialpartners.com

Mac Wiseman  
Associate  
571.228.7781  
mac.wiseman@  
harborcommercialpartners.com

 **Harbor**  
COMMERCIAL PARTNERS  
[harborcommercialpartners.com](http://harborcommercialpartners.com)