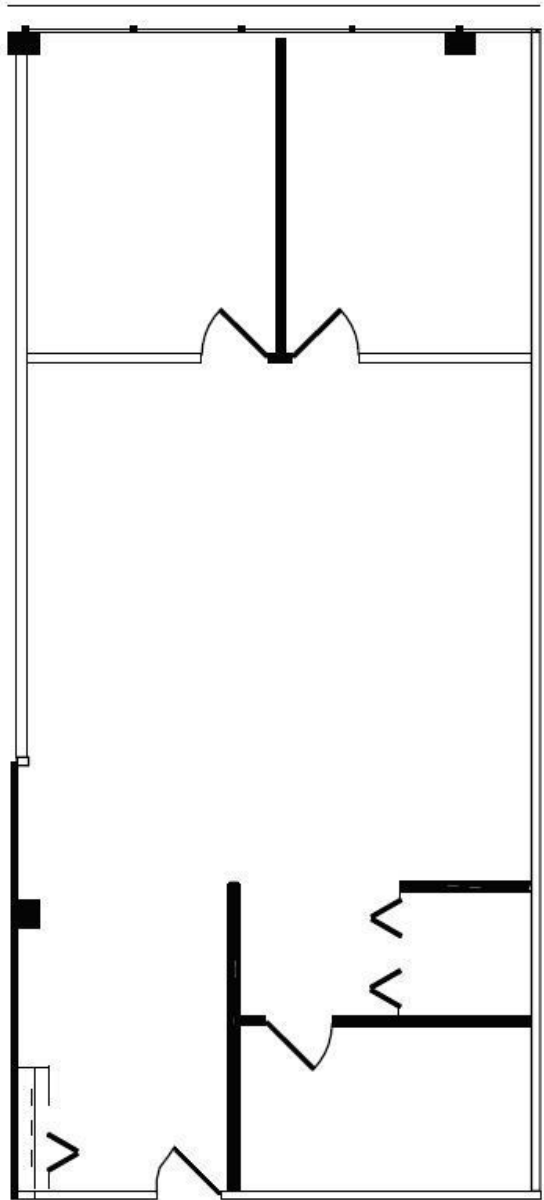


# SUITE 370 | 1,307 SF

1771 W DIEHL RD \ NAPERVILLE, IL



## SPACE NOTES

- Generous Build-Out Allowance
- 2 private offices
- Efficient layout



**RYAN MOEN**  
630.480.6346  
RMoen@VersaRES.com

**JOHN MILLNER**  
630.480.6342  
JMillner@VersaRES.com

**1 MID AMERICA PLAZA, 3RD FLOOR**  
**OAKBROOK TERRACE, IL 60181**  
**630.480.6413**

**VERSA**  
REAL ESTATE SERVICES