



JAMES CAMPBELL
COMPANY

For Lease
28,764 SF /
35,431 SF



1000 Stevenson Court Roselle, IL

Contact us:

Ron Behm, SIOR

Principal
+1 847 698 8210 office
+1 847 712 6010 mobile
Ron.Behm@colliers.com

Brian Kling

Principal
+1 847 698 8223 office
+1 630 430 3812 mobile
Brian.Kling@colliers.com



6250 N. River Road, Suite 11-100
Rosemont, IL 60018
colliers.com

Suite 101

- **Available Size: 28,764 SF**
- Office Size: 2,047 SF
- Loading: 5 ext. docks
- Parking: 20 cars
- Possession: Immediate

Suite 106

- **Available Size: 35,431 SF**
- Office Size: 1,900 SF
- Loading: 5 ext. docks
- Parking: 25 cars
- Possession: 7/1/26

Property Overview

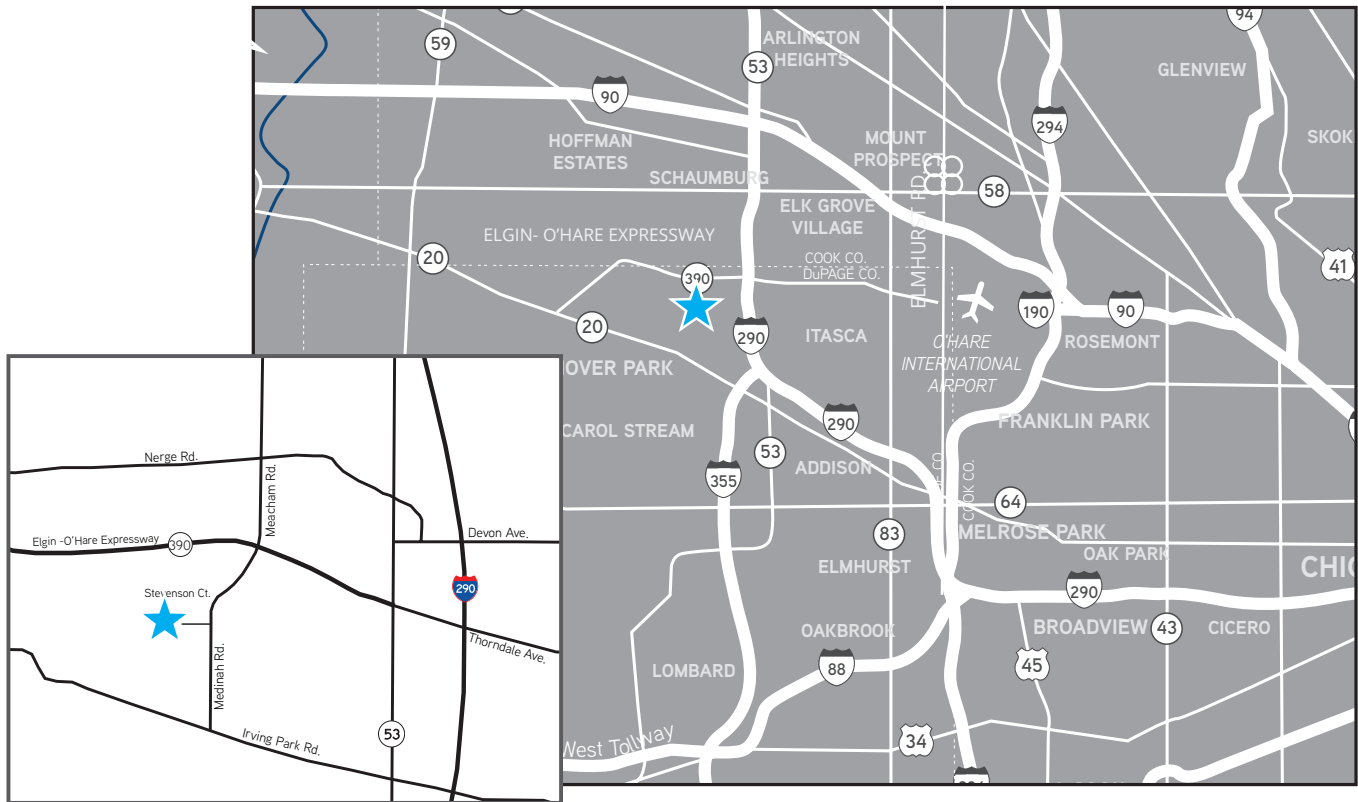
- Building Size: 169,050 SF
- Sprinklers: Fully
- Clear Height: 22' clear
- Built: 1987
- Bay Size: 35' x 40'
- Power: 200 amps @ 277/480 volts
- Easy Access to major expressways (Elgin - O'Hare/I-290/I-355)
- Low DuPage County Taxes
- R.E. Taxes: \$1.36/SF (2026 est.)
- CAM: \$1.16/SF (2026 est.)
- Rental Rate: STO

Copyright © 2022 Colliers International.

Information herein has been obtained from sources deemed reliable, however its accuracy cannot be guaranteed. The user is required to conduct their own due diligence and verification.

1000 Stevenson Court

Suite 101 | Suite 106 | Roselle, IL



Ron Behm, SIOR
Principal
+1 847 698 8210 office
+1 847 712 6010 mobile
Ron.Behm@colliers.com

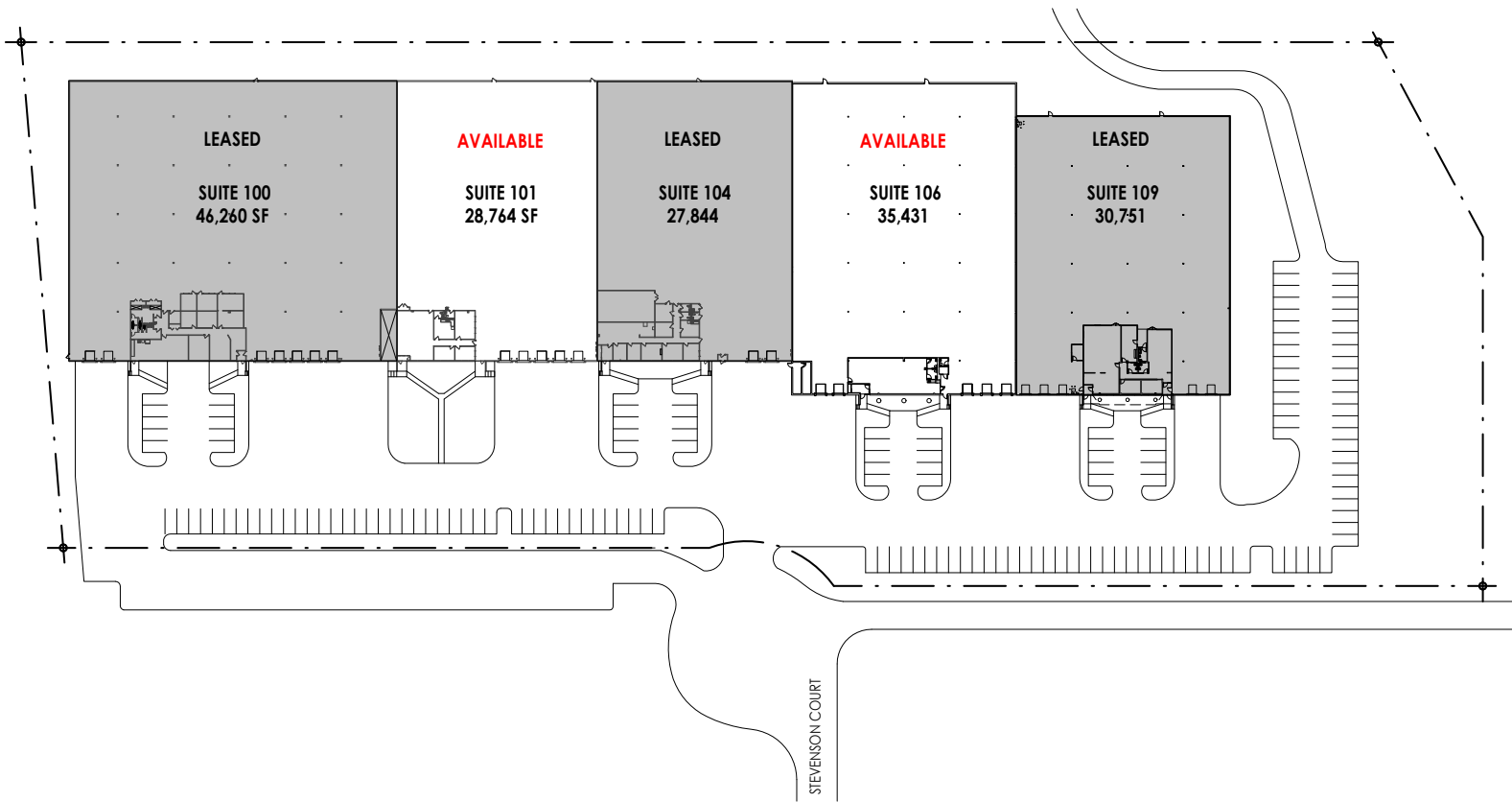
Brian Kling
Principal
+1 847 698 8223 office
+1 630 430 3812 mobile
Brian.Kling@colliers.com

Information herein has been obtained from sources deemed reliable, however its accuracy cannot be guaranteed. The user is required to conduct their own due diligence and verification.



1000 Stevenson Court

Suite 101 | Suite 106 | Roselle, IL



SITE PLAN



Ron Behm, SIOR
Principal
+1 847 698 8210 office
+1 847 712 6010 mobile
Ron.Behm@colliers.com

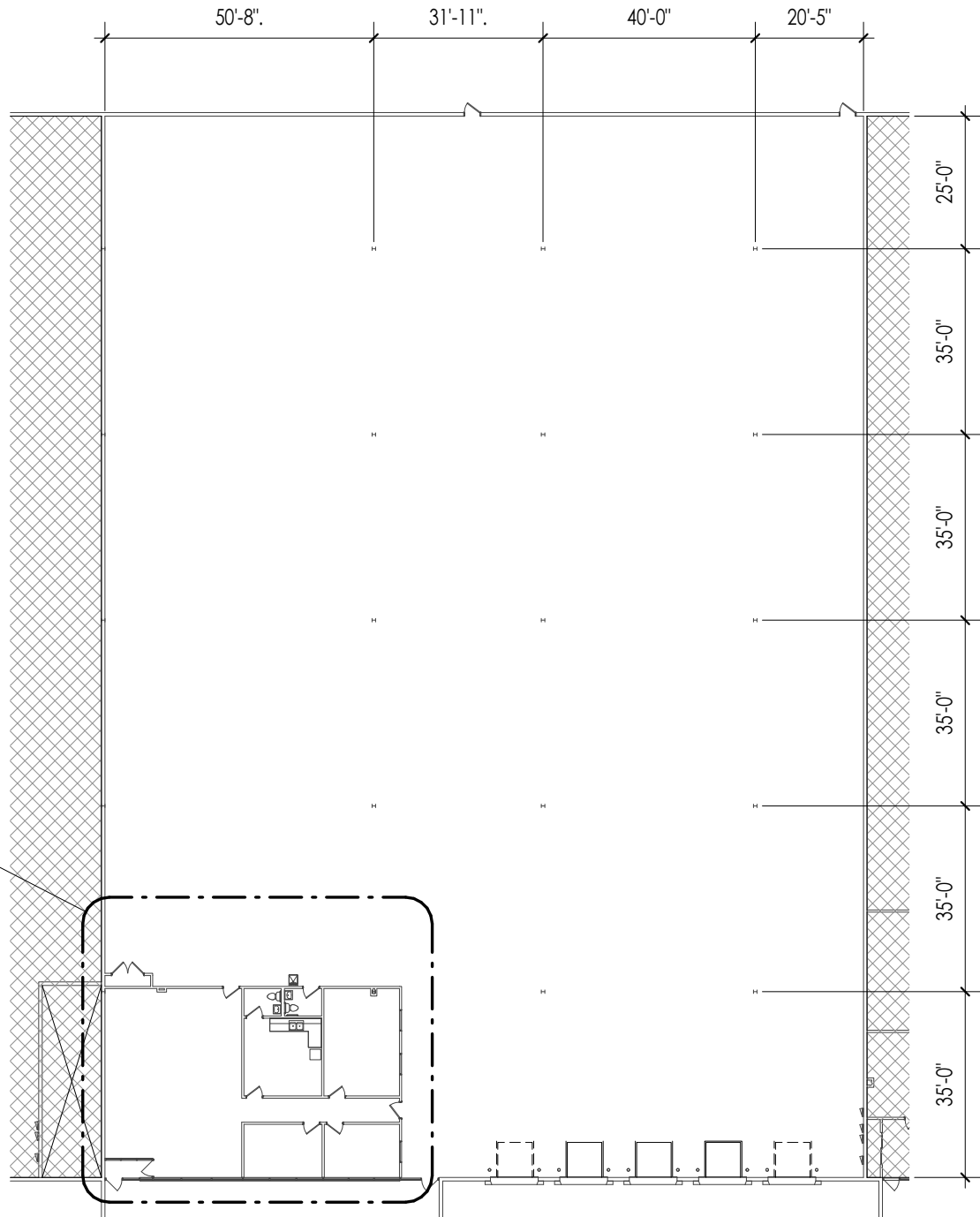
Brian Kling
Principal
+1 847 698 8223 office
+1 630 430 3812 mobile
Brian.Kling@colliers.com

Information herein has been obtained from sources deemed reliable, however its accuracy cannot be guaranteed. The user is required to conduct their own due diligence and verification.

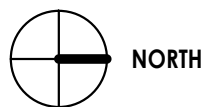


1000 Stevenson Court

Suite 101 | Roselle, IL



1
SK_5



Ron Behm, SIOR
Principal
+1 847 698 8210 office
+1 847 712 6010 mobile
Ron.Behm@colliers.com

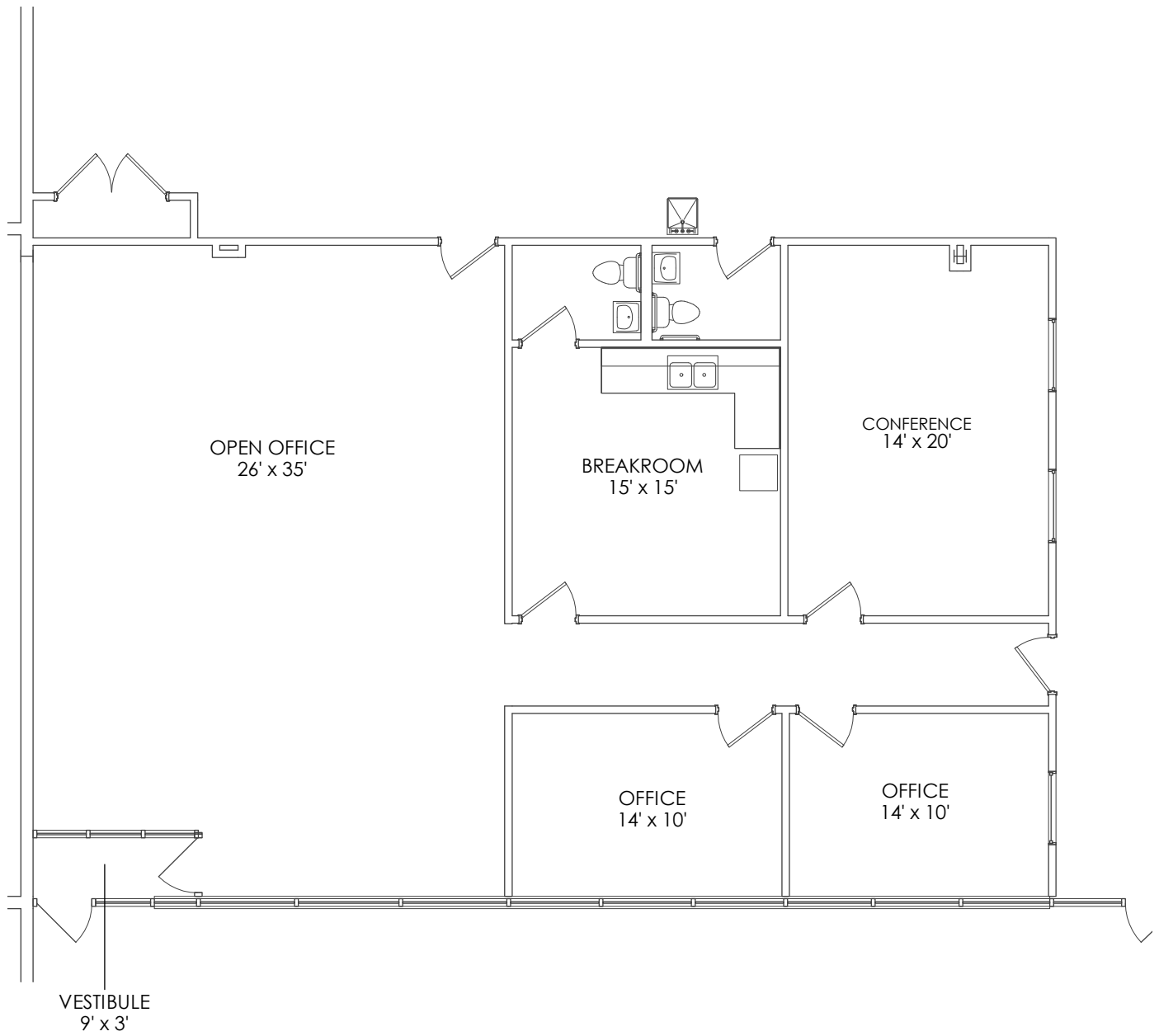
Brian Kling
Principal
+1 847 698 8223 office
+1 630 430 3812 mobile
Brian.Kling@colliers.com

Information herein has been obtained from sources deemed reliable, however its accuracy cannot be guaranteed. The user is required to conduct their own due diligence and verification.



1000 Stevenson Court

Suite 101 | Roselle, IL



OFFICE AREA: 2,047 SF



Ron Behm, SIOR
Principal
+1 847 698 8210 office
+1 847 712 6010 mobile
Ron.Behm@colliers.com

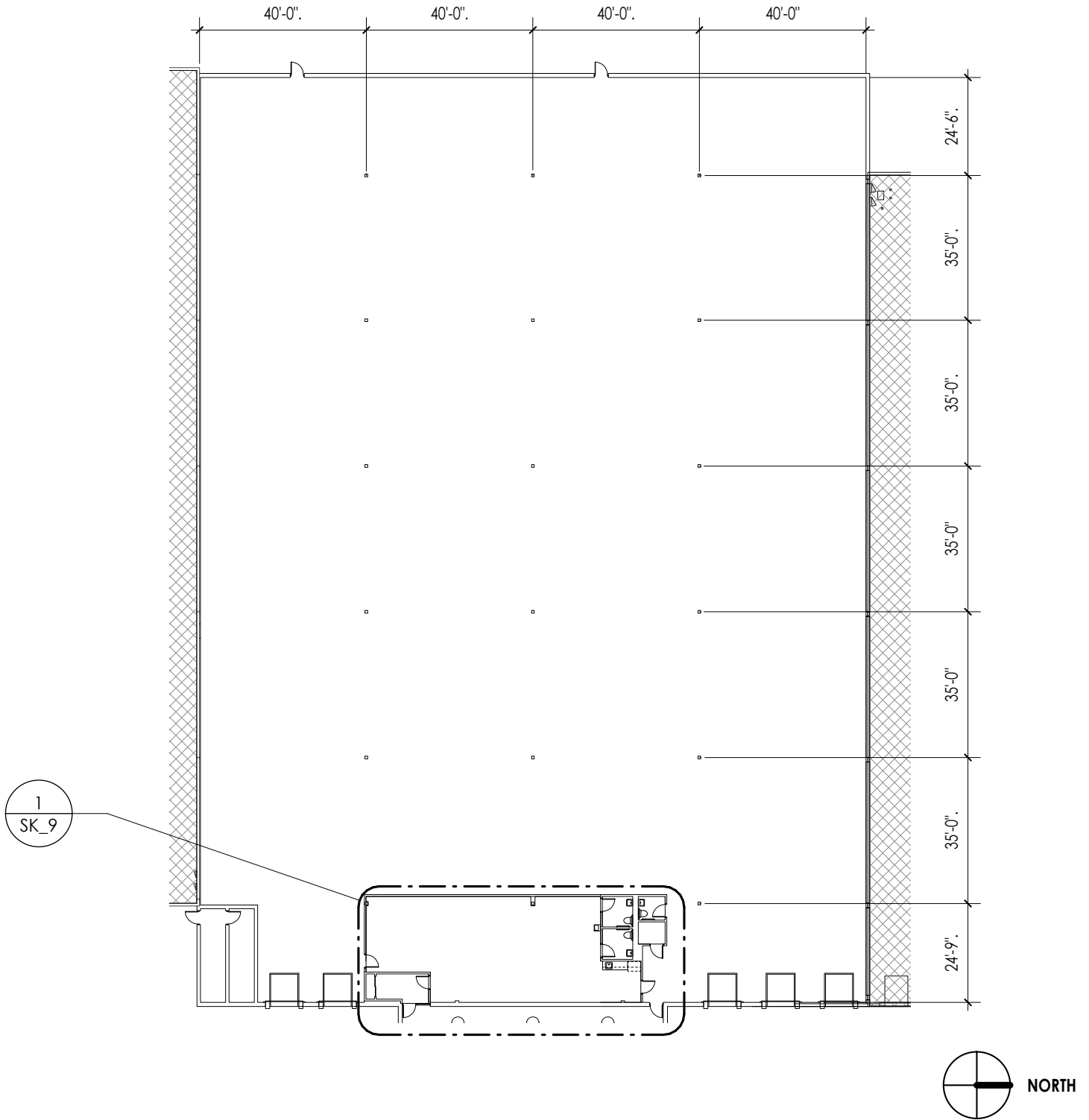
Brian Kling
Principal
+1 847 698 8223 office
+1 630 430 3812 mobile
Brian.Kling@colliers.com

Information herein has been obtained from sources deemed reliable, however its accuracy cannot be guaranteed. The user is required to conduct their own due diligence and verification.



1000 Stevenson Court

Suite 106 | Roselle, IL



Ron Behm, SIOR
Principal
+1 847 698 8210 office
+1 847 712 6010 mobile
Ron.Behm@colliers.com

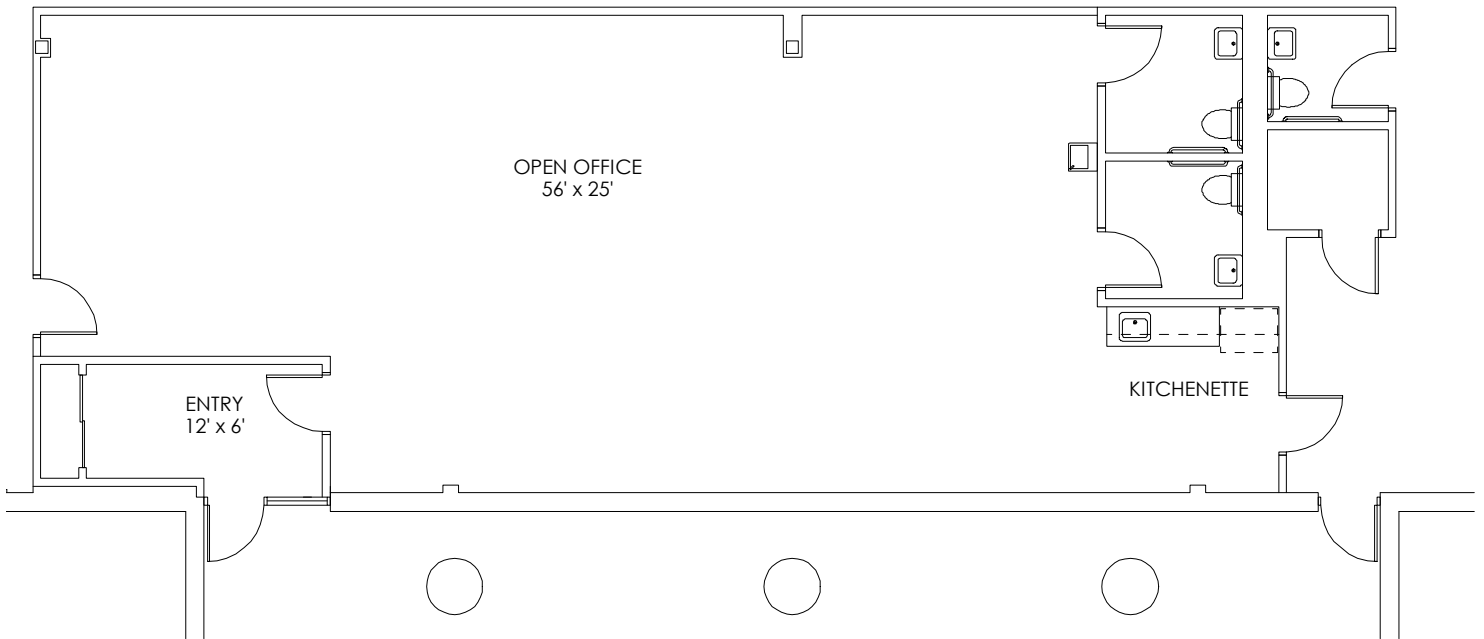
Brian Kling
Principal
+1 847 698 8223 office
+1 630 430 3812 mobile
Brian.Kling@colliers.com

Information herein has been obtained from sources deemed reliable, however its accuracy cannot be guaranteed. The user is required to conduct their own due diligence and verification.



1000 Stevenson Court

Suite 106 | Roselle, IL



OFFICE AREA: 1,835 SF



NORTH

Ron Behm, SIOR
Principal
+1 847 698 8210 office
+1 847 712 6010 mobile
Ron.Behm@colliers.com

Brian Kling
Principal
+1 847 698 8223 office
+1 630 430 3812 mobile
Brian.Kling@colliers.com

Information herein has been obtained from sources deemed reliable, however its accuracy cannot be guaranteed. The user is required to conduct their own due diligence and verification.

