

2,842 SF

FLEX WAREHOUSE SPACE

FOR LEASE

419 ROUTE 146, CLIFTON PARK, NY 12065



2,842 SF OF
MODERN FLEX
SPACE



UNDER 0.1 MILES
TO ROUTE 146



IMMEDIATELY
AVAILABLE



STANDBROKERAGE
COMPANY
4 Executive Park Drive
Albany, NY 12203
standardbrokerageco.com

JESSE TRANVAAG

Licensed Real Estate Salesperson
M: (607) 437-3351
O: (518) 618-0590, ext. 406
E: jtranvaag@standardbrokerageco.com

FOR LEASE | 419 ROUTE 146, CLIFTON PARK, NY

Property Overview

Construction	PEMB
Roof	Metal
Year Built	2020
Building Size	14,750 SF
Available Space	2,842 SF
Lot Size	2.96 Acres
Lease Rate	\$4,150 per Month Gross
Loading	1 OHD (14')
Ceiling Height	22'
Utilities	National Grid Gas and Electric
Water and Sewer	Municipal
Delivery	Immediate
Zoning	Industrial



STANDBROKERAGE
COMPANY
4 Executive Park Drive
Albany, NY 12203
standardbrokerageco.com

JESSE TRANVAAG
Licensed Real Estate Salesperson
M: (607) 437-3351
O: (518) 618-0590, ext. 406
E: jtranvaag@standardbrokerageco.com

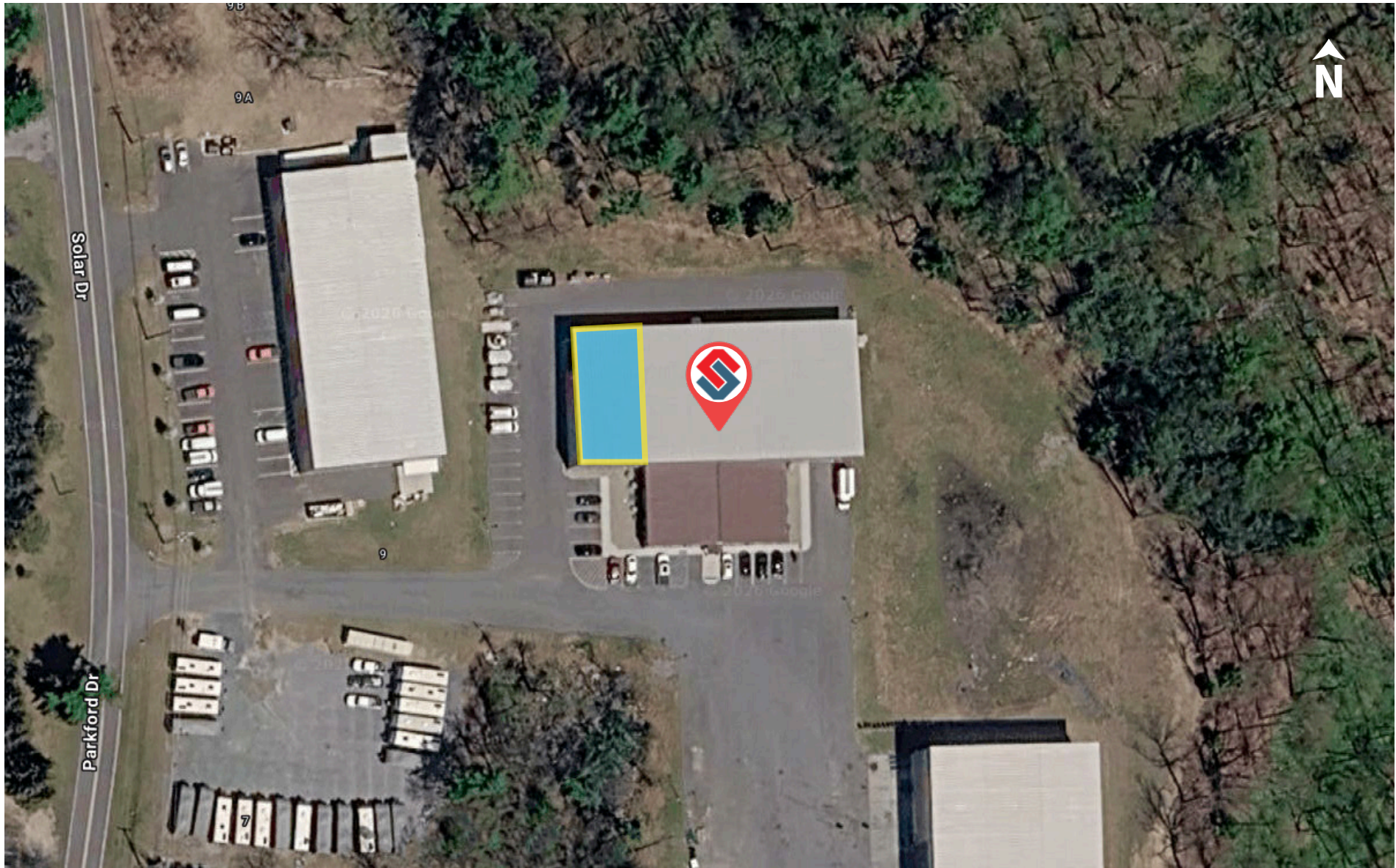
FOR LEASE | 419 ROUTE 146, CLIFTON PARK, NY



**STANDBROKERAGE
COMPANY**
4 Executive Park Drive
Albany, NY 12203
standardbrokerageco.com

JESSE TRANVAAG
Licensed Real Estate Salesperson
M: (607) 437-3351
O: (518) 618-0590, ext. 406
E: jtranvaag@standardbrokerageco.com

FOR LEASE | 419 ROUTE 146, CLIFTON PARK, NY

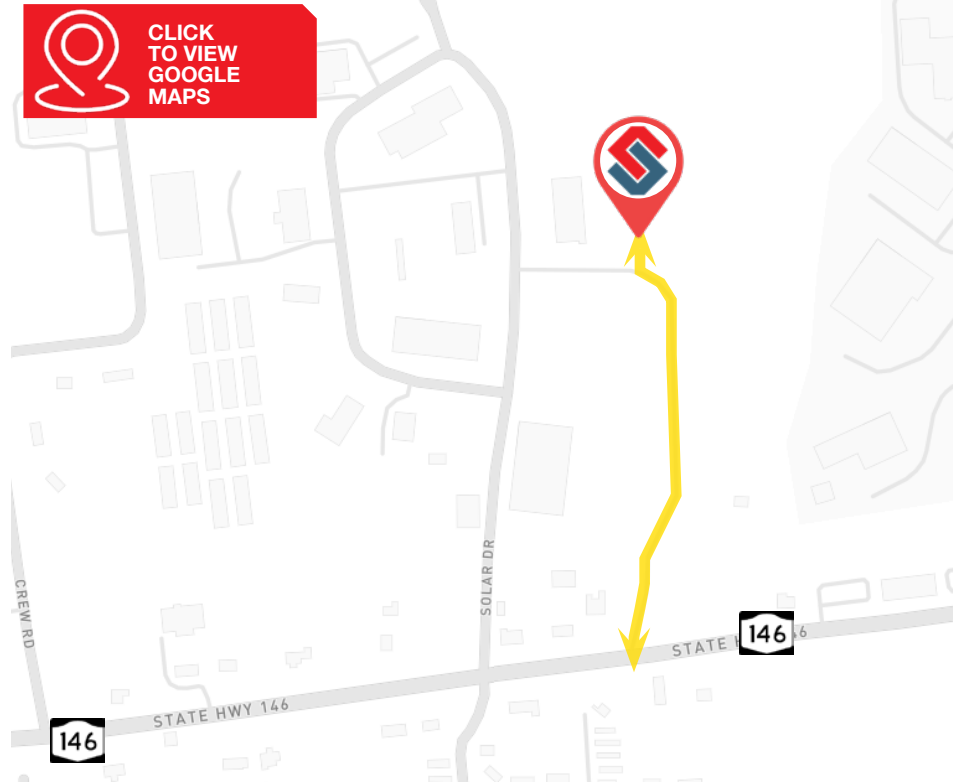


STANDBROKERAGE
COMPANY
4 Executive Park Drive
Albany, NY 12203
standardbrokerageco.com

JESSE TRANVAAG
Licensed Real Estate Salesperson
M: (607) 437-3351
O: (518) 618-0590, ext. 406
E: jtranvaag@standardbrokerageco.com

FOR SUBLEASE | 419 ROUTE 146, CLIFTON PARK, NY

HIGHWAY ACCESS

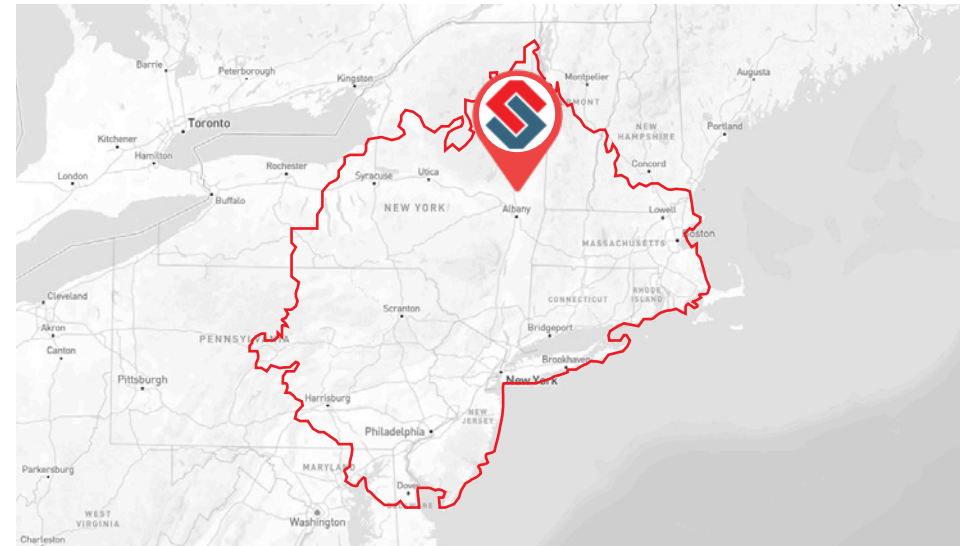


Downtown Albany	±21 miles
Albany International Airport	±12 miles
Route 146	± .1 miles

CAPITAL REGION



4 HOUR DRIVE TIME



The information contained herein has been given to us by the owner of the property or by other sources we deem reliable; we have no reason to doubt its accuracy, but we do not guarantee it. All information should be verified prior to purchase or lease.



STANDBROKERAGE
COMPANY
4 Executive Park Drive
Albany, NY 12203
standardbrokerageco.com

JESSE TRANVAAG
Licensed Real Estate Salesperson
M: (607) 437-3351
O: (518) 618-0590, ext. 406
E: jtranvaag@standardbrokerageco.com