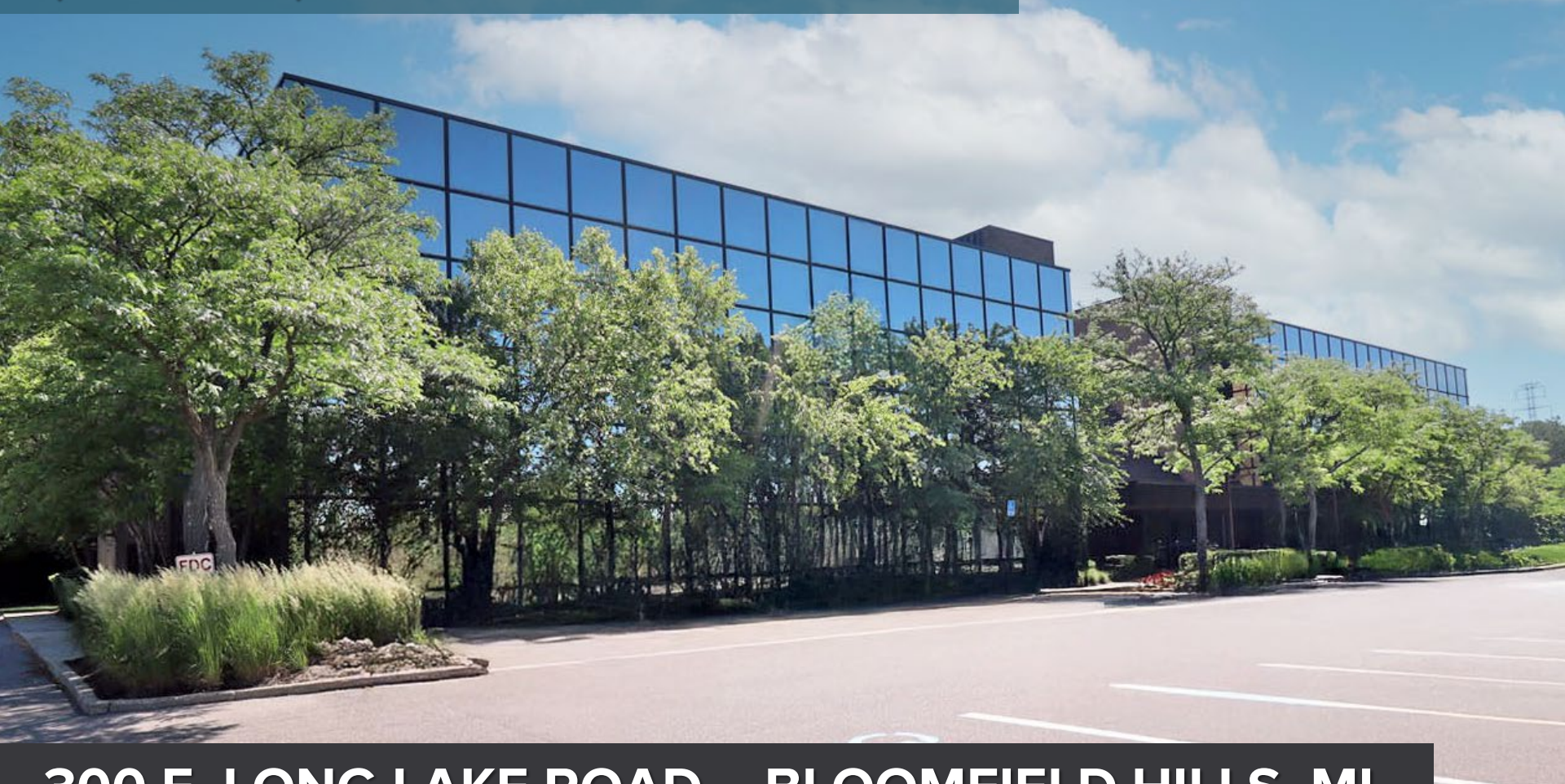


PREMIUM OFFICE AVAILABLE

1,025 – 29,882 SQUARE FEET



300 E. LONG LAKE ROAD – BLOOMFIELD HILLS, MI

For more information, contact:

DAVE MILLER
(248) 948 4183
dmiller@signatureassociates.com

DAN MORROW
(248) 799 3144
dmorrow@signatureassociates.com



**SIGNATURE
ASSOCIATES**
KNOW SIGNATURE | KNOW RESULTS

Information is subject to verification and no liability for errors or omissions is assumed. Price is subject to change and listing withdrawal.



OVERVIEW

- 1,025 – 13,776 square foot suites available
- 29,882 square feet vertically contiguous available
 - 1st Floor: 8,039 SF
 - 2nd Floor: 13,776 SF
 - 3rd Floor: 8,067 SF
- Fully renovated, Class A office building in a wooded setting
- Move-in ready suites available (3rd Floor)
- Impeccably maintained, renovated lobby, recent capital improvements, and new parking lot
- 214 parking spaces
- Located in the heart of Bloomfield Hills
- Available immediately
- Inquire for Lease Rate





WELL MAINTAINED OFFICE SPACE

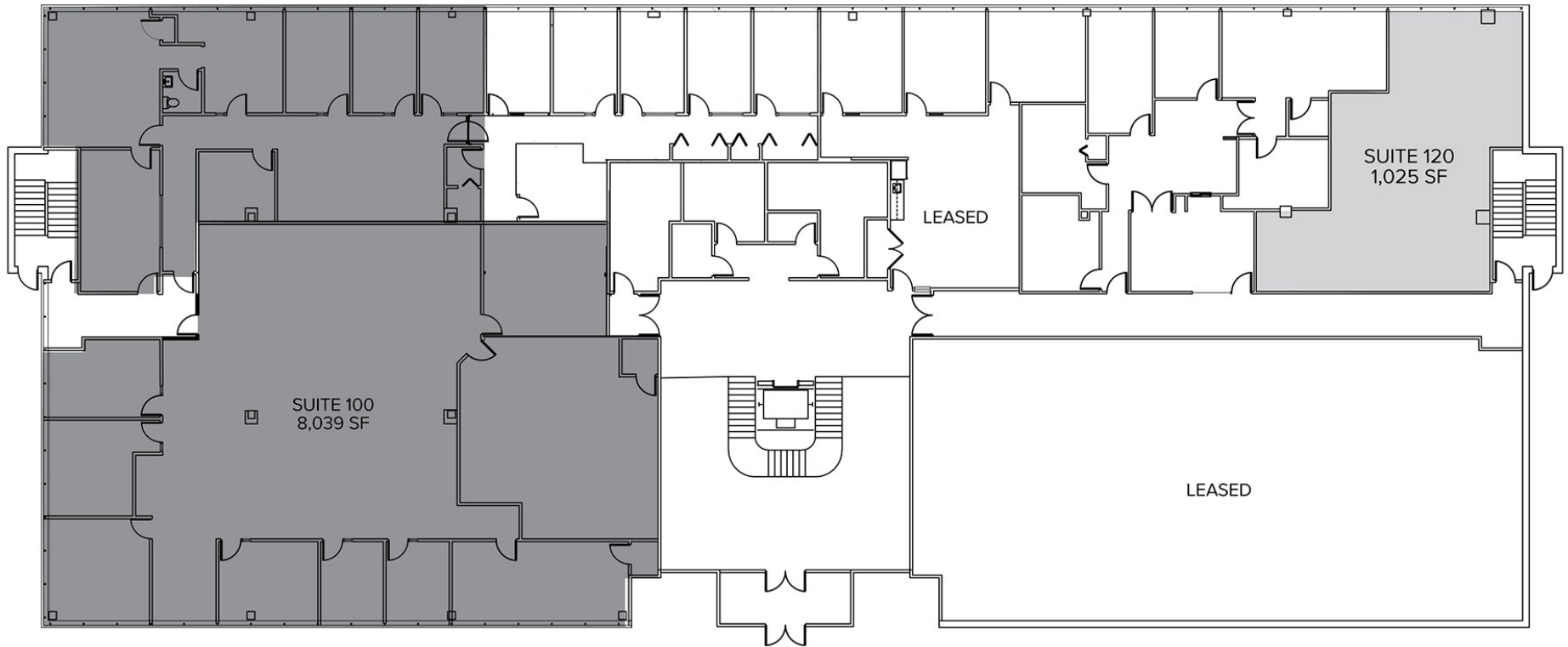




LOCATED IN A BEAUTIFUL WOODED AREA

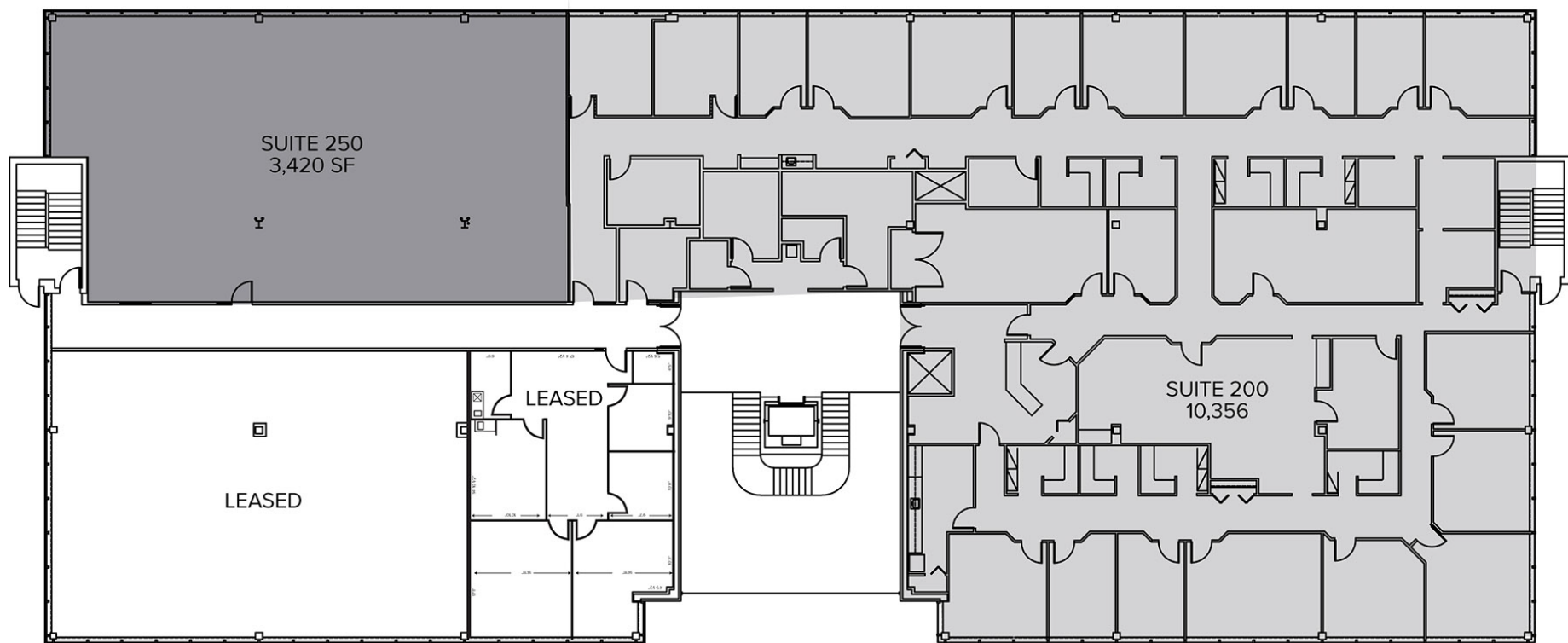
1ST FLOOR

- Suite 100 – 8,039 Sq. Ft. Available
- Suite 120 – 1,025 Sq. Ft. Available



2ND FLOOR

- Suite 200 – 10,356 Sq. Ft. Available
- Suite 250 – 3,420 Sq. Ft. Available
- Suites 200 & 250 – 13,776 Sq. Ft. Available



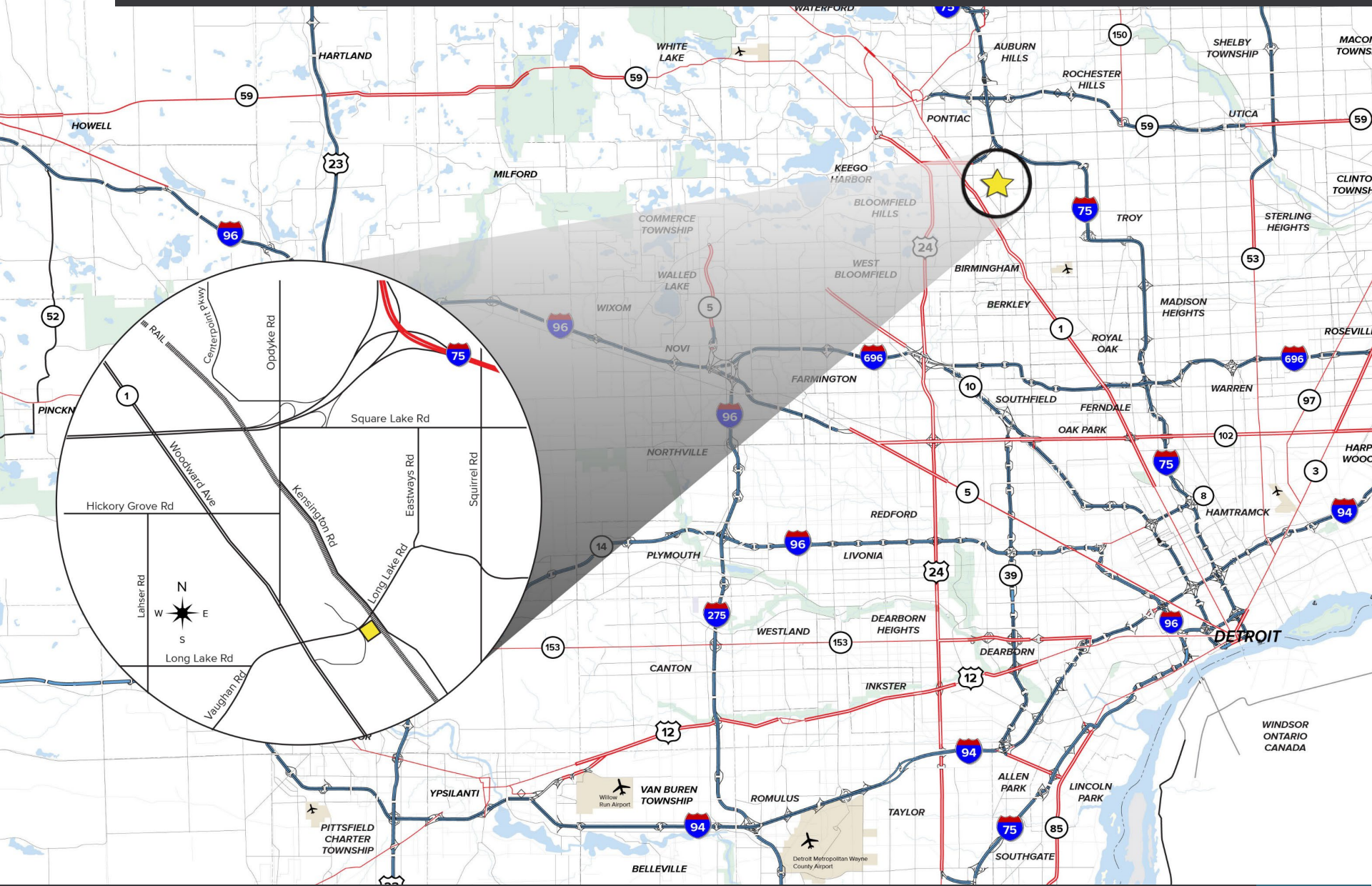
3rd FLOOR

— Suite 300 – 8,067 Sq. Ft. Available





AREA MAP



For more information, contact:

DAVE MILLER

(248) 948 4183

dmiller@signatureassociates.com

DAN MORROW

(248) 799 3144

dmorrow@signatureassociates.com

BROKERAGE SERVICES

TENANT REPRESENTATION

INVESTMENT SALES

BUSINESS SALES

VALUATION

ADVISORY SERVICES

PROPERTY/ASSET MANAGEMENT

CONSULTING

MARKET RESEARCH

MARKETING

SIGNATURE ASSOCIATES

One Towne Square, Suite 1200

Southfield, Michigan 48076

(248) 948 9000

www.signatureassociates.com

Information is subject to verification and no liability for errors or omissions is assumed. Price is subject to change and listing withdrawal.



**SIGNATURE
ASSOCIATES**
KNOW SIGNATURE | KNOW RESULTS