

INDUSTRIAL LAND SITE FOR SALE



# 0 (486) COMSTOCK ROAD

North Smithfield, RI 02896

**GEORGE PASKALIS, SIOR**

Partner  
401.751.3200 x3303  
george@mgcommercial.com

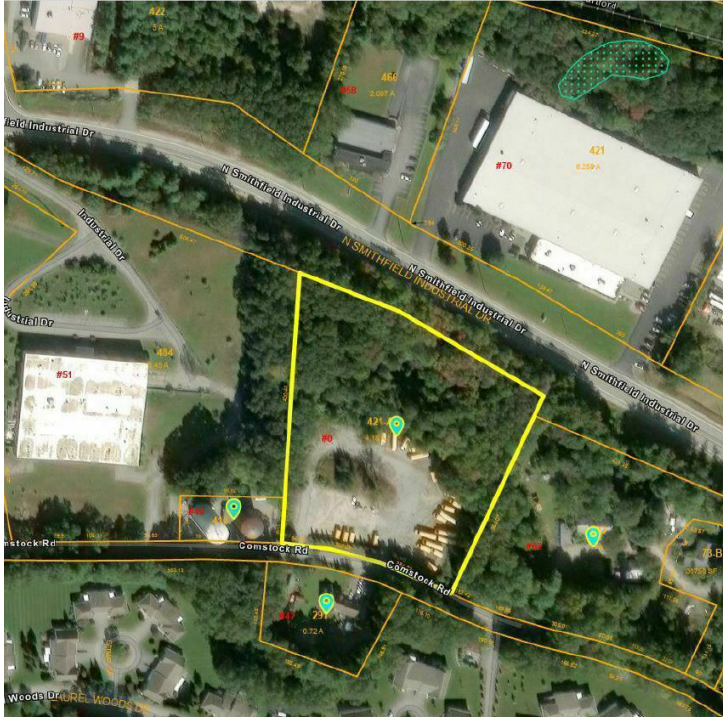
**JULIE FRESHMAN, SIOR**

Vice President  
401.751.3200 x3309  
julie@mgcommercial.com

**MG COMMERCIAL**

365 Eddy Street, Penthouse Suite  
Providence, RI 02903  
401.751.3200 | mgcommercial.com

# EXECUTIVE SUMMARY



## LOCATION DESCRIPTION

Exceptional northern Rhode Island location within the North Smithfield Industrial Park with immediate access to Route 146. Just 24 miles to Worcester, MA, 6 miles to I-295, and 13 miles to Providence, the property offers strategic proximity to major transportation routes, enhancing logistical efficiency and access to regional markets. Identified as North Smithfield Plat 5, Lot 421-A.

## PROPERTY DESCRIPTION

Existing 4.18 acre parcel currently used for bus parking. The site is mostly flat and compacted and ideal for new development or build-to-suit. The parcel is located in the M (Manufacturing) zoning district, which is established to provide areas suitable for industrial development, research and certain transportation, storage and utility uses.

## OFFERING SUMMARY

|             |            |
|-------------|------------|
| Sale Price: | \$525,000  |
| Lot Size:   | 4.18 Acres |
| Zoning:     | M          |

## PROPERTY HIGHLIGHTS

- 4.18 Acre Industrial Site
- North Smithfield Industrial Park
- Frontage on N.S. Industrial Drive
- Exceptional Highway Access
- Annual Taxes \$6,154.54

**GEORGE PASKALIS, SIOR**  
Partner  
401.751.3200 x3303  
george@mgcommercial.com

**JULIE FRESHMAN, SIOR**  
Vice President  
401.751.3200 x3309  
julie@mgcommercial.com

365 Eddy Street, Penthouse Suite  
Providence, RI 02903  
mgcommercial.com

