

KEY

- ➔ INGRESS
- ➔ EGRESS



M&T Bank

Cumberland
FARMS

QUALITY

PROPOSED
CHASE

FIVE GUYS
BURGERS and FRIES

NEWBURYPORT
BANK

PYLON

SITE
+/- 7,590 SF
SUBDIVIDABLE

Peverly Hill Road 8,662 ADT

Lafayette Road 19,475 ADT

1

PORTSMOUTH, NH

1390 LAFAYETTE RD

±7,590 SF AVAILABLE FOR LEASE (SUBDIVIDABLE)



PROJECT DETAILS

1390 LAFAYETTE RD • ±7,590 AVAILABLE FOR LEASE (SUBDIVIDABLE)

PROPERTY HIGHLIGHTS

- ±7,590 SF (Subdividable) for Lease
- Co-Tenants include Chase Bank (Proposed), Five Guys, and Newburyport Bank
- Pylon signage available
- Easy access to I-95 and RT 33
- 19,475 ADT on Lafayette Road - Route 1
- 91 parking spaces



POPULATION

3 MILE

27,264

5 MILE

43,308

7 MILE

59,277



DAYTIME POPULATION

44,679

68,920

83,355

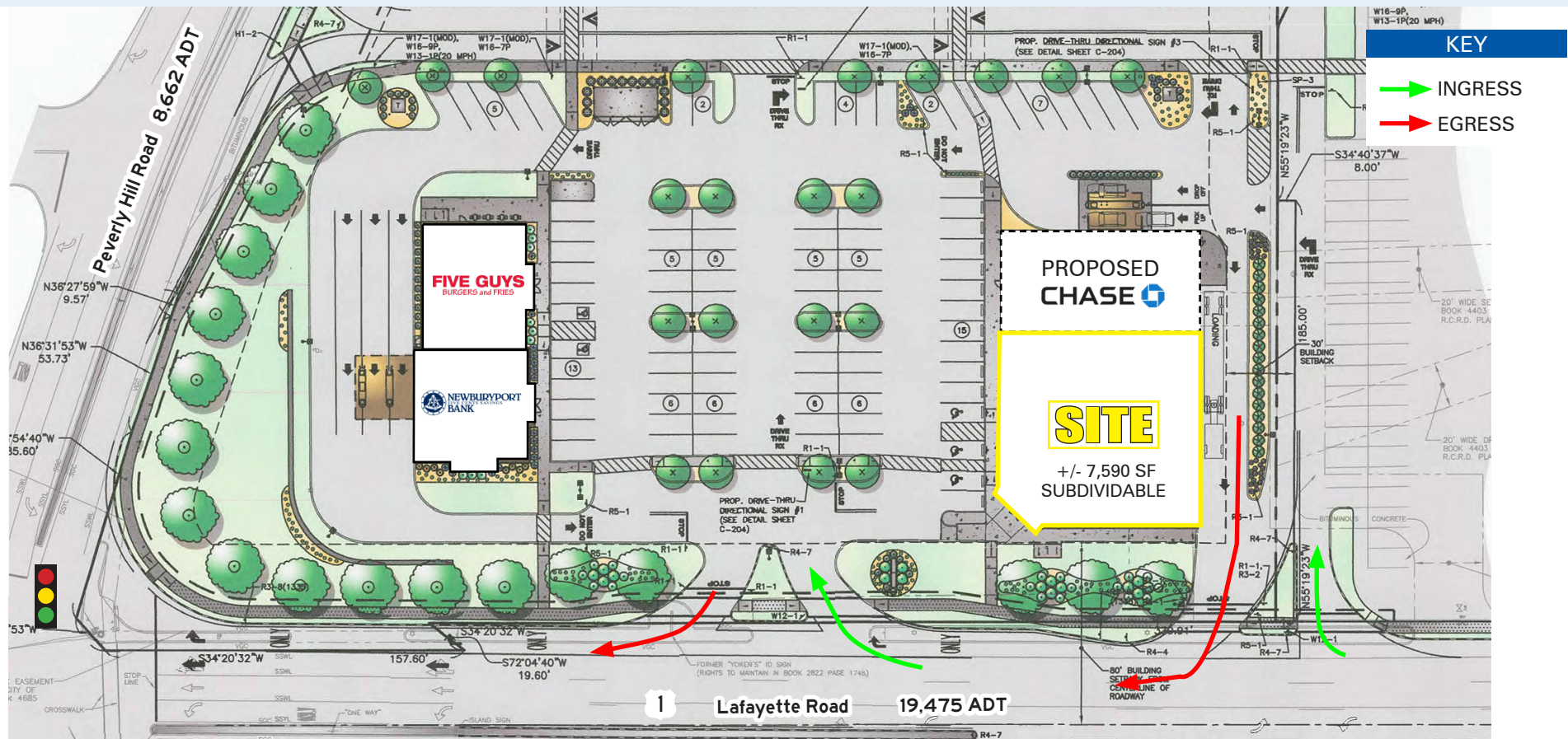


MEDIAN HH INCOME

\$113,714

\$111,754

\$117,286



AERIAL



convenientMD
Domino's
AAA

Planet Fitness
H&R BLOCK
HARBOR FREIGHT
FedEx

Lighthouse

DUNKIN'

McDonald's

19-475 ADT

SITE

FIVE GUYS
BURGERS and FRIES
Newburyport Bank

MARKET BASKET
WORK FOR YOUR DOLLAR
TD Bank

Cumberland

M&T Bank

Lafayette Road

ATHLETA
OrangeTheory FITNESS
pure barre

SERVICE CREDIT UNION
★★★★

petco
McKinnon's
HARVEST & CURE BUTCHER SHOP

Water Country USA

Bangor Savings Bank

Walmart

Advance Auto Parts

TACO BELL

Lafayette Rd
19-475 ADT

Ninety Nine 99

Starbucks

PORTSMOUTH, NH

1390 LAFAYETTE RD

+7,590 SF SUBDIVIDABLE | AVAILABLE

JACK LYMAN

860.391.1736
JLYMAN@ATLANTICRETAIL.COM

JAKE BRENNAN

781.686.0862
JBRENNAN@ATLANTICRETAIL.COM



BOSTON
THE PRUDENTIAL CENTER
BOSTON, MA 02199
617.239.3600

- ALBANY
- ATLANTA
- CHARLESTON
- CHARLOTTE
- LOS ANGELES
- NEW YORK CITY
- ORLANDO
- PITTSBURGH
- WEST PALM BEACH

WWW.ATLANTICRETAIL.COM

[LINKEDIN.COM/COMPANY/ATLANTIC-RETAIL-PROPERTIES](https://www.linkedin.com/company/atlantic-retail-properties)
 [INSTAGRAM.COM/ATLANTIC_RETAIL/](https://www.instagram.com/atlantic_retail/)