



For Lease
Office Spaces
 1,300 - 8,800 SF | \$15.75/SF

Forks of the River:
2725 Asbury Rd
2727 Asbury Rd
5266 N National Dr
 Knoxville, TN 37914

Property Highlights

- Newly remodeled office spaces
- Convenient to East Knoxville area
- Enjoy Cruze Farm Pizza & Ice Cream
- Flexible: 1,300 SF up to 8,800 SF contiguous
- Office buildings built 2004 masonry construction
- Part of 3.2 acre office park campus, same owner

OFFERING SUMMARY	
Available SF	1,300 - 8,800 SF
Lease Rate	\$15.75/SF (NNN)
Lot Size	3.2 Acres

DEMOGRAPHICS		
Stats	Population	Avg. HH Income
10 Miles	121	\$65,283
Knox Metro	1,172,792	\$77,766

For more information

Sam Tate, CCIM

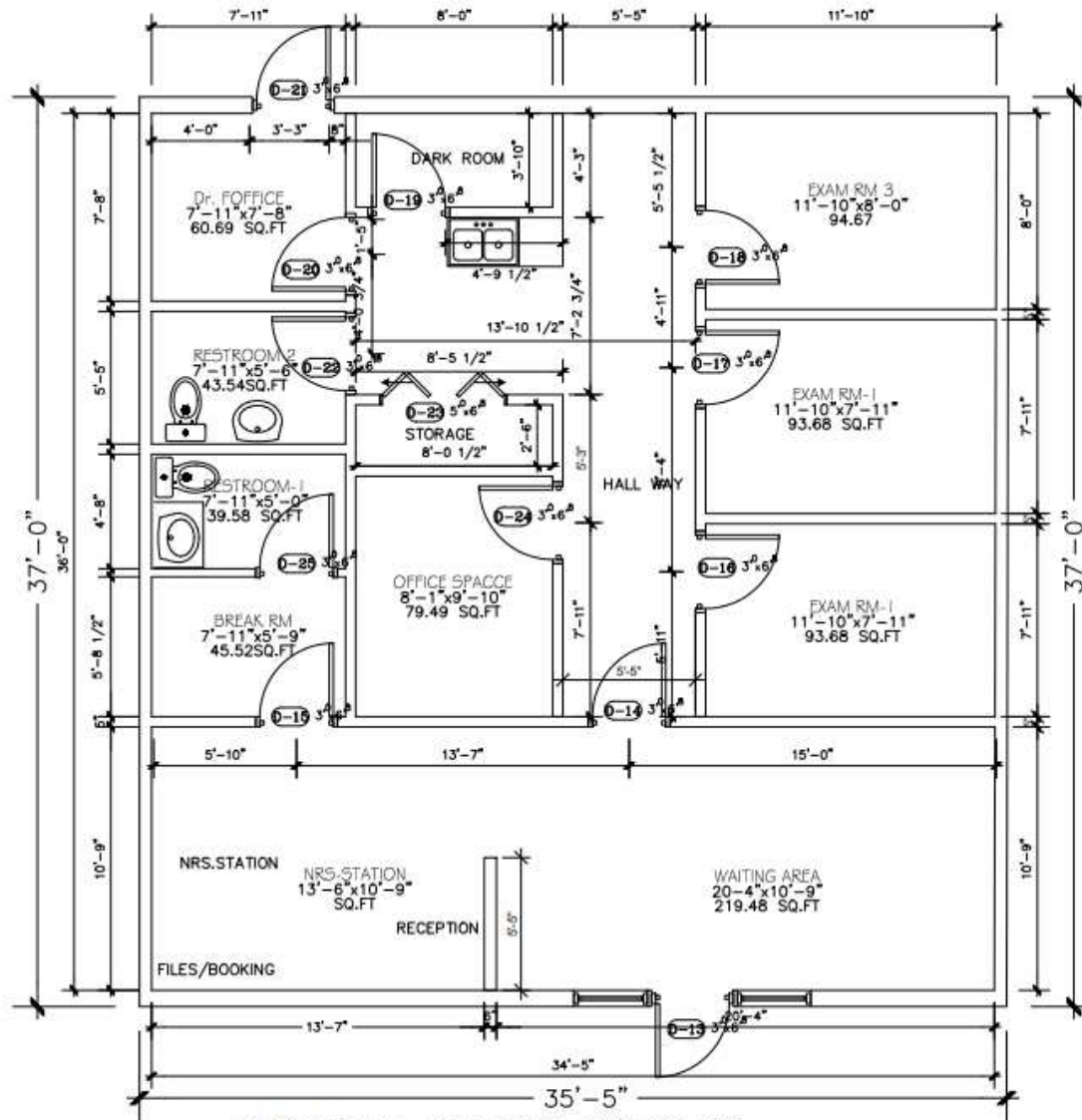
O: 865 777 3035 | C: 865 806 6517
 state@koellamoore.com

Ryan McElveen, MBA

O: 865 531 6400 | C: 865 567 0232
 rmcelveen@koellamoore.com

ASBURY PARK

2725 Asbury Road, Knoxville, TN



FLOOR PLAN BUILDING - B SUITE 102
SCALE: 1/4" = 1'-0"

REV.	DATE	DESCRIPTION	BY
1	07-10-2011	FINAL	

Ahmed Soliman
Architectural
CAD Services
KNOXVILLE, TN 37919
EMAIL: asoliman1@gmail.com

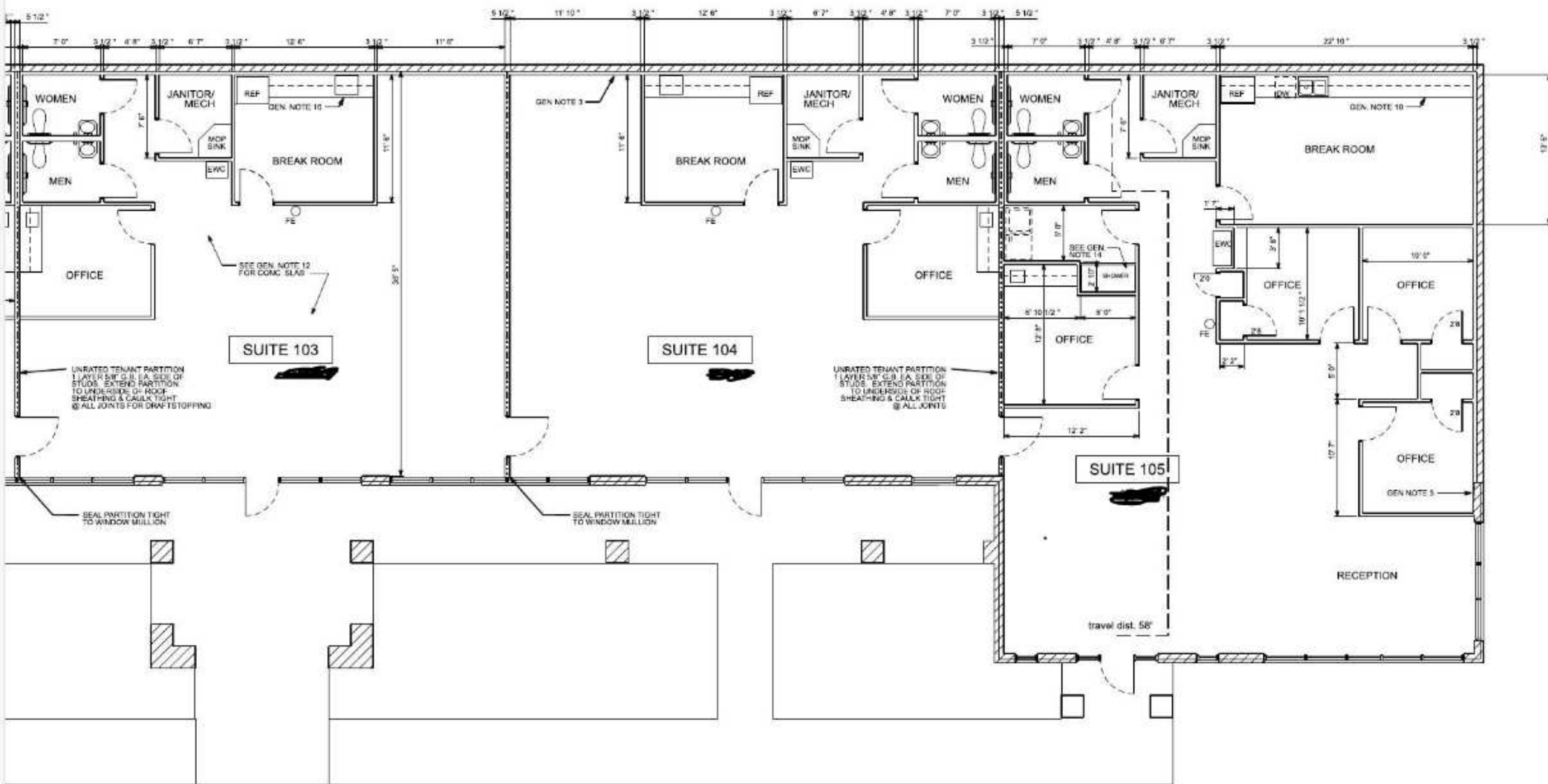
AutoCAD SHX Text
KNOXVILLE, TN 37919
EMAIL: asoliman1@gmail.com

ASBURY
MEDICAL OFFICE
Location: 2725 K...

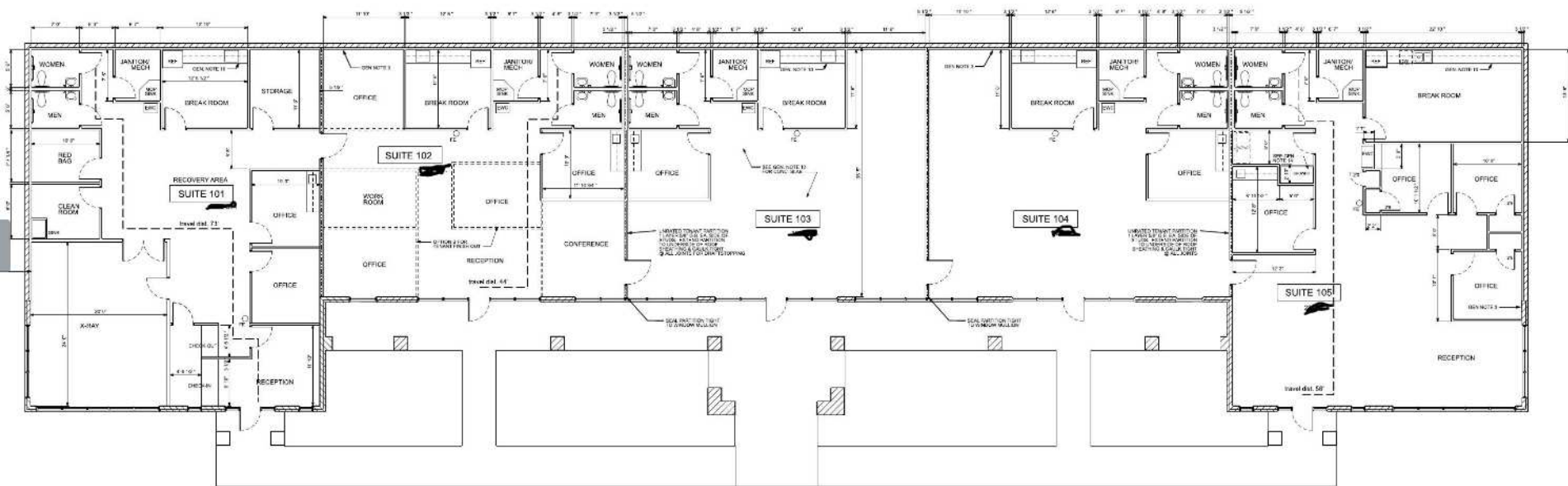
FLOOR PLAN
BUILDING B
SUITE 102

B1.2

Floorplan 2727



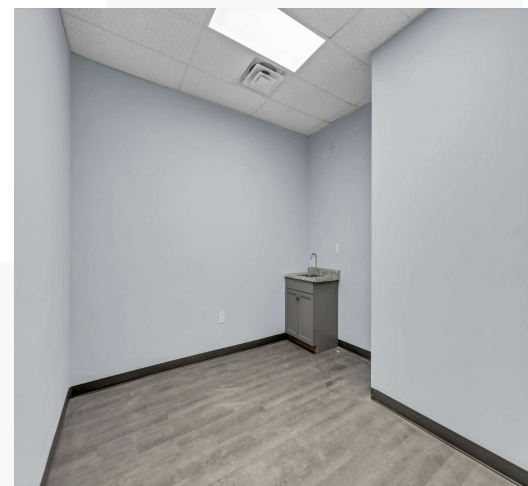
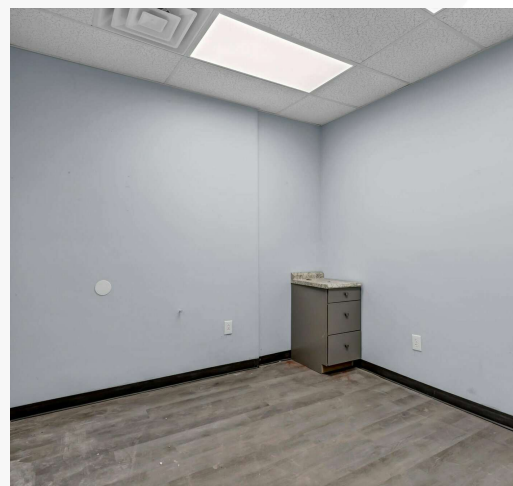
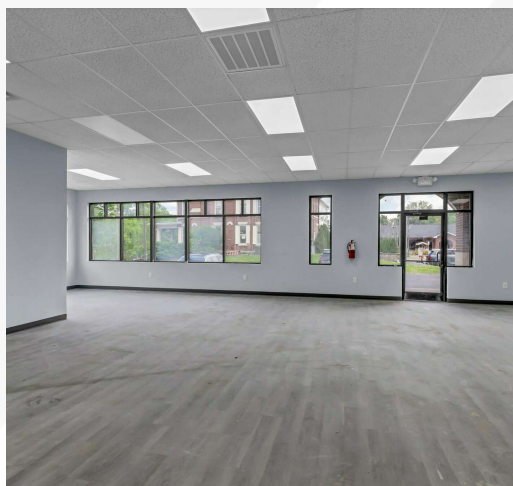
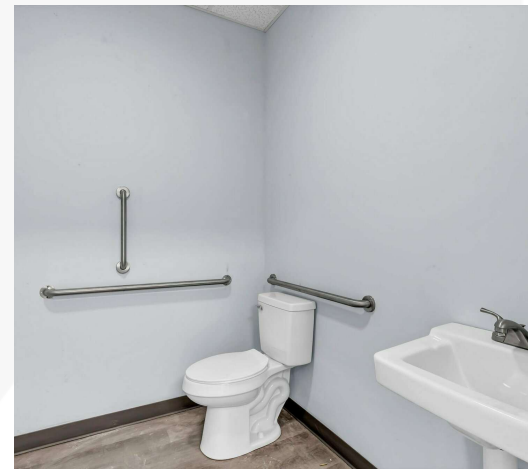
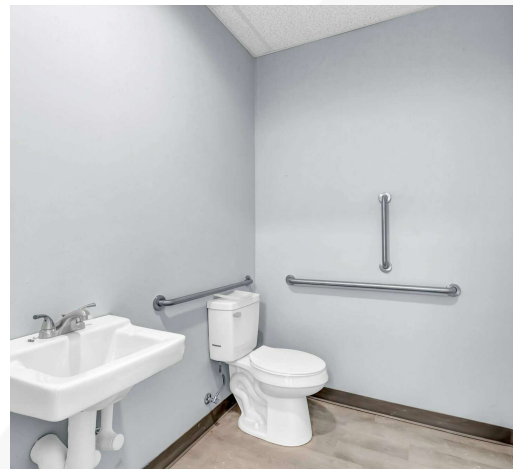
Floorplan 5266



1 BUILDING C UPPER FLOOR PLAN
A1 SCALE 1/8" = 1'-0"

GENERAL NOTES

Additional Photos



Location Maps



Map data ©2024 Imagery ©2024 TerraMetrics

For Lease

Office Building

1,300 - 8,800 SF | \$15.75 SF/yr



SAM TATE, CCIM

Senior Advisor

Direct: 865.777.3035 **Cell:** 865.806.6517
state@koellamoore.com

TN #207699



RYAN MCELVEEN, MBA

Advisor

Direct: 865.531.6400 **Cell:** 865.567.0232
rmcelveen@koellamoore.com

CalDRE #01850467