



For Lease: Office

5710-5780 Timberlea Boulevard

Timberlea Boulevard...It's Easy to Move Into...

Lennard:

602-350 Burnhamthorpe Road W, Mississauga
905.625.5020 • lennard.com

Joni Blanshard*, Vice President
905.247.9231 • jblanshard@lennard.com

*Sales Representative



5710-5780 Timberlea Boulevard Available Space



5710 Timberlea Boulevard

~~Suite 105: 2,452 SF~~ (Leased)
Suite 201: 3,849 SF

5720 Timberlea Boulevard

~~Suite 201: 1,674 SF~~ (Leased)
Suite 203: 1,556 SF
Suite 205: 620 SF
Suite 206: 2,210 SF

5780 Timberlea Boulevard

~~Suite 107: 1,569 SF~~ (Leased)



Net Rent

\$14.00 PSF

(\$1.00 Annual Increases)

Additional Rent

\$12.00 PSF (2022 est.)

(Does not include interior janitorial)



Functional
Windows
to Allow for
Natural Air
Flow

Lennard:

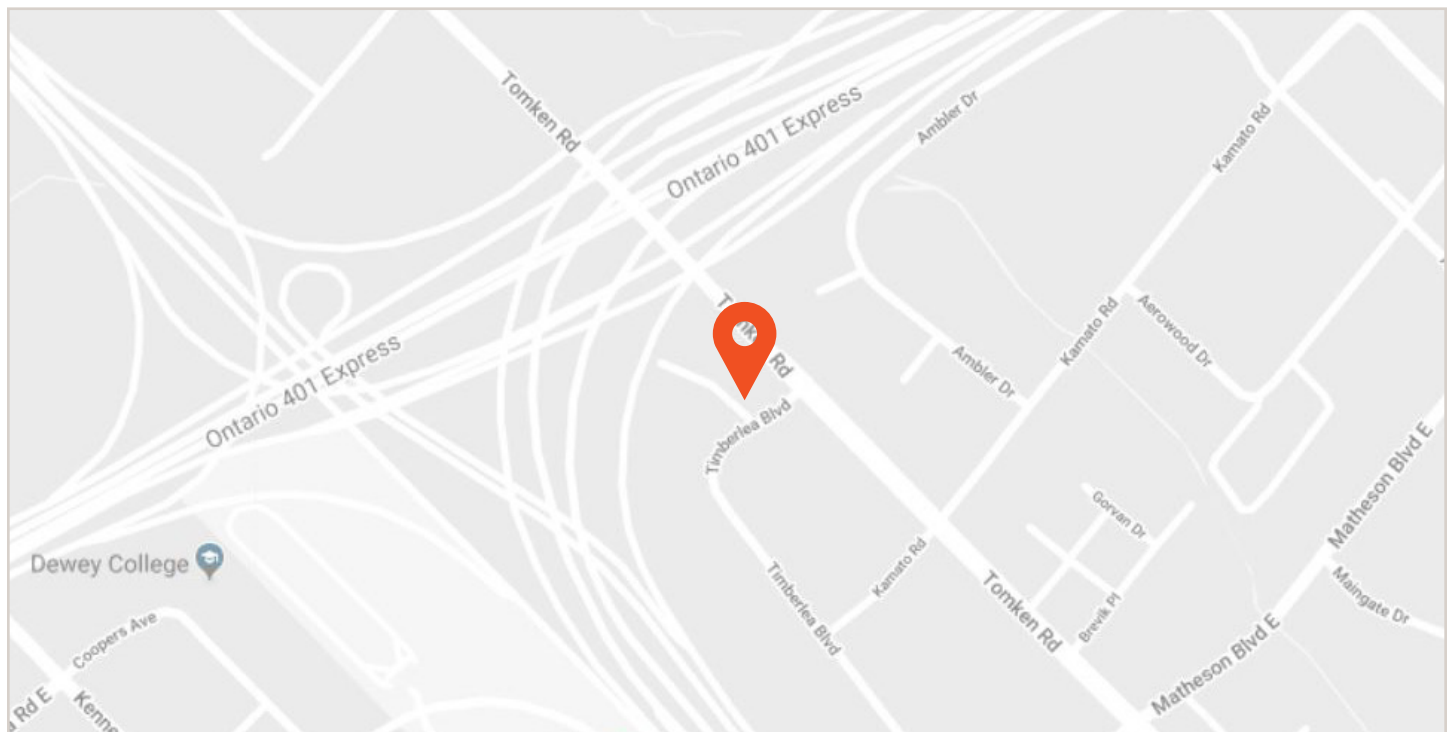
Joni Blanshard*, Vice President
905.247.9231 • jblanshard@lennard.com

lennard.com



5710-5780 Timberlea Boulevard Property Highlights

- Easy access to all major 400 series highways
- All suites are built-out and in move-in condition
- Ample parking outside your suite
- Operational windows and walkout balconies on 2nd level
- Efficient space maximizing tenant's layout eliminating high gross up factors



Statements and information contained are based on the information furnished by principals and sources which we deem reliable but for which we can assume no responsibility. Lennard Commercial Realty, Brokerage

Lennard:

Joni Blanshard*, Vice President
905.247.9231 • jblanshard@lennard.com

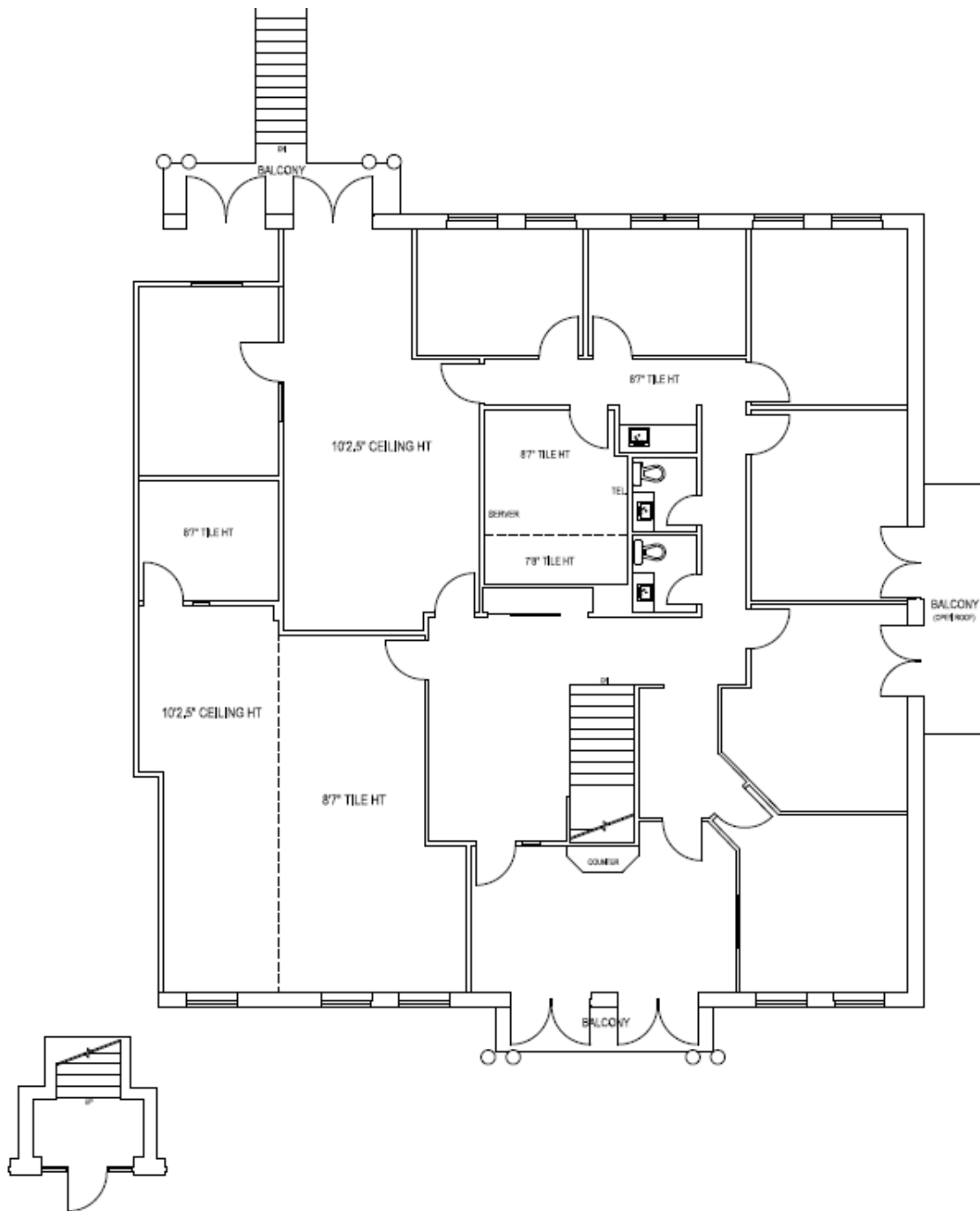
*Sales Representative

lennard.com

5710-5780 Timberlea Blvd



5710 Timberlea Boulevard
Suite 201: 3,900 SF



Lennard:

Joni Blanshard*, Vice President
905.247.9231 • jblanshard@lennard.com

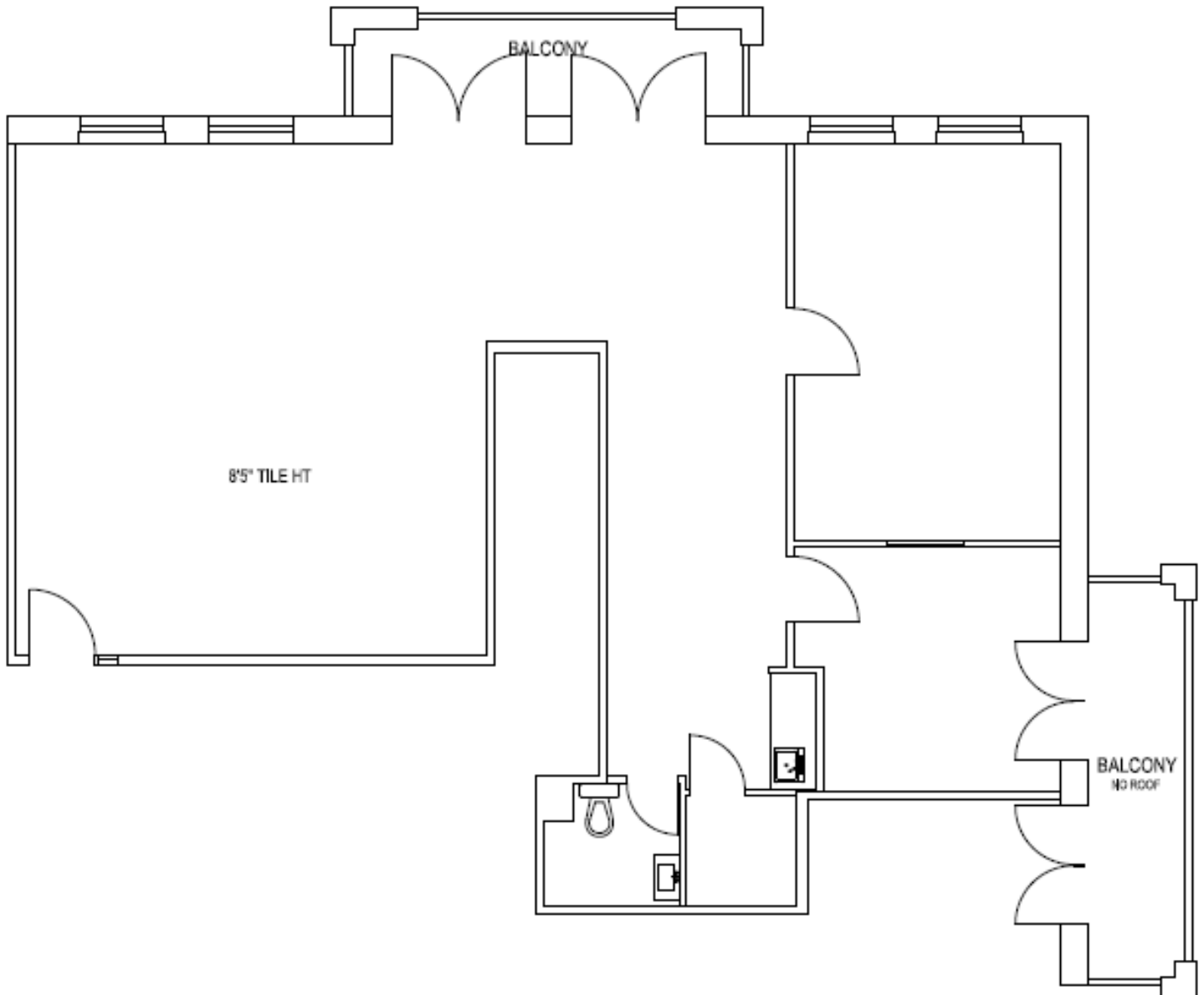
*Sales Representative

lennard.com

5710-5780 Timberlea Blvd



5720 Timberlea Boulevard
Suite 203: 1,556 SF



Lennard:

Joni Blanshard*, Vice President
905.247.9231 • jblanshard@lennard.com

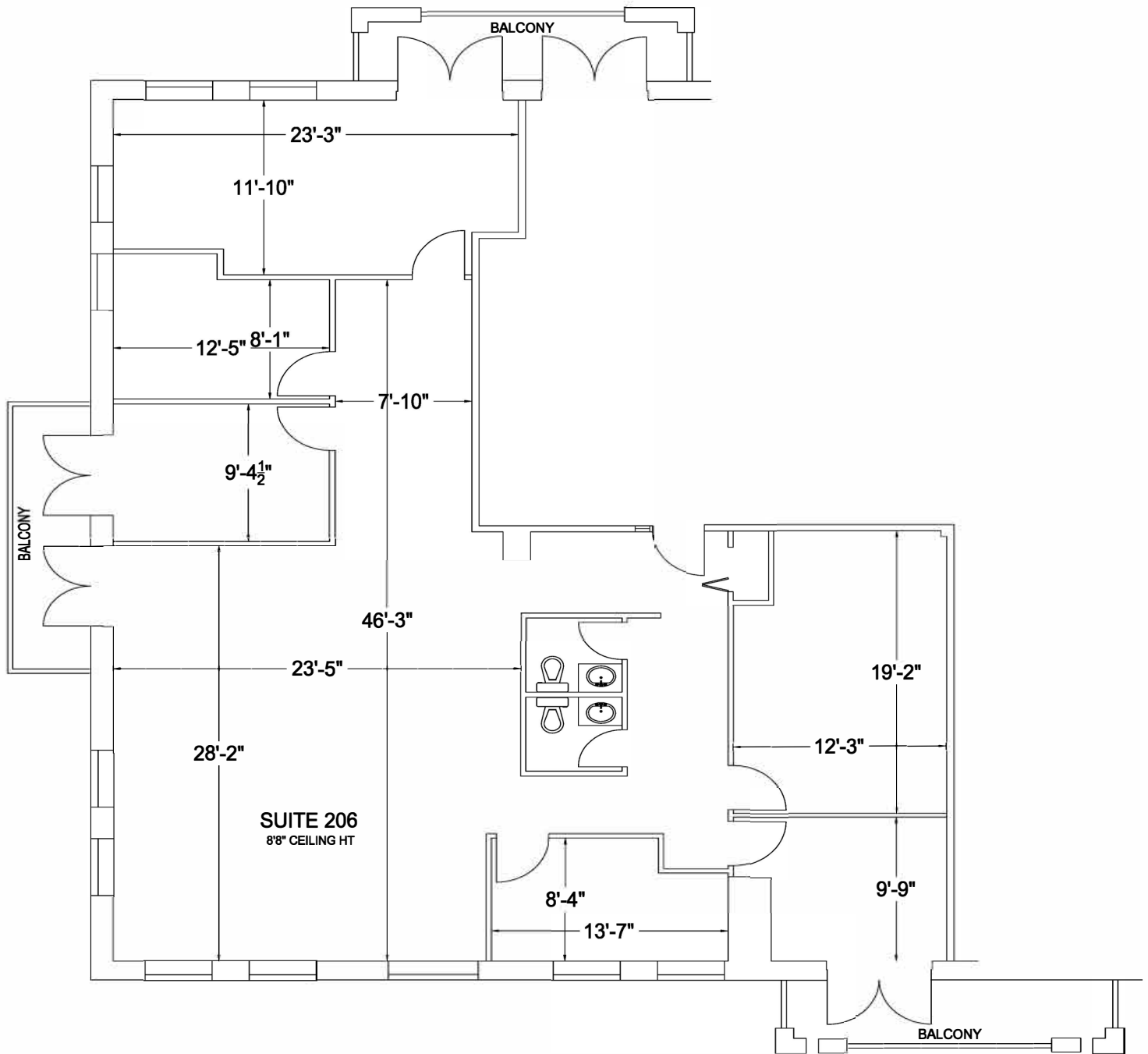
*Sales Representative

lennard.com

5710-5780 Timberlea Blvd



5720 Timberlea Boulevard
Suite 206: 2,210 SF



Lennard:

Joni Blanshard*, Vice President
905.247.9231 • jblanshard@lennard.com

*Sales Representative

lennard.com

5710-5780 Timberlea Blvd



Lennard:

Joni Blanshard*, Vice President
905.247.9231 • jblanshard@lennard.com

*Sales Representative

lennard.com

5710-5780 Timberlea Blvd



Suite 203: 1,556 SF



Lennard:

Joni Blanshard*, Vice President
905.247.9231 • jblanshard@lennard.com

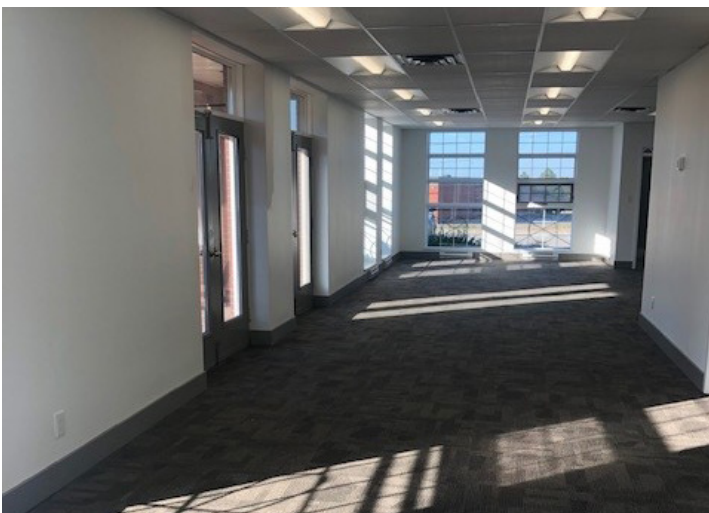
*Sales Representative

lennard.com

5710-5780 Timberlea Blvd



Suite 107: 1,569 SF



*A bright future
for your business
is right here.*

Lennard:

Joni Blanshard*, Vice President
905.247.9231 • jblanshard@lennard.com

*Sales Representative

lennard.com