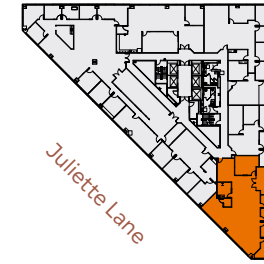
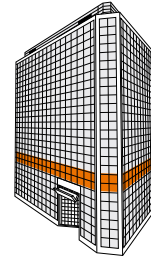
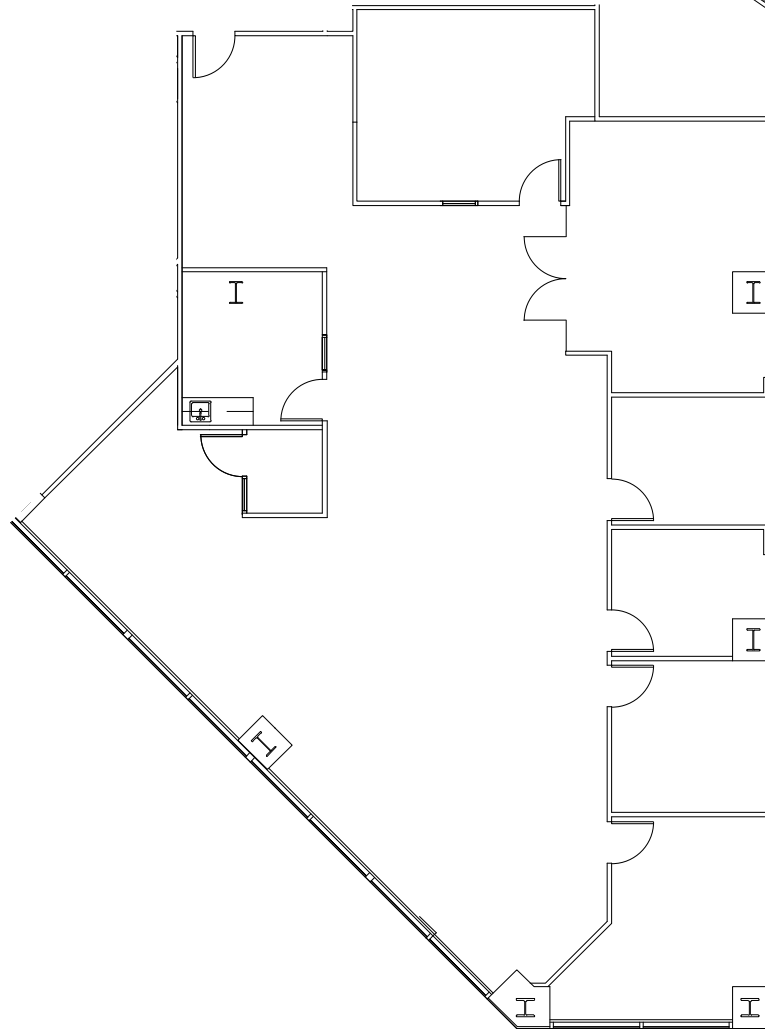


# SUITE 490

±3,700 SF | AVAILABLE NOW

- 5 Private Offices
- Conference Room
- Kitchen
- IT/Storage Room
- Open Area for Desks



MISSION  
CITY CENTER

## SEAN TOOMEY

+1 408 219 8858  
sean.toomey@jll.com  
RE Lic#: 01350215

## MARYJANE BENGIVENO

+1 408 856 5622  
maryjane.bengiveno@jll.com  
RE Lic#: 0220114

## BRYTE BELLOTTI

+1 408 621 7517  
bryte.bellotti@jll.com  
RE Lic#: 01944321

