

# 7TH PROFESSIONAL PLAZA

715 E 3900 S Salt Lake City, UT 84107



Investment Realty  
ADVISORS

## EVAN WRYE

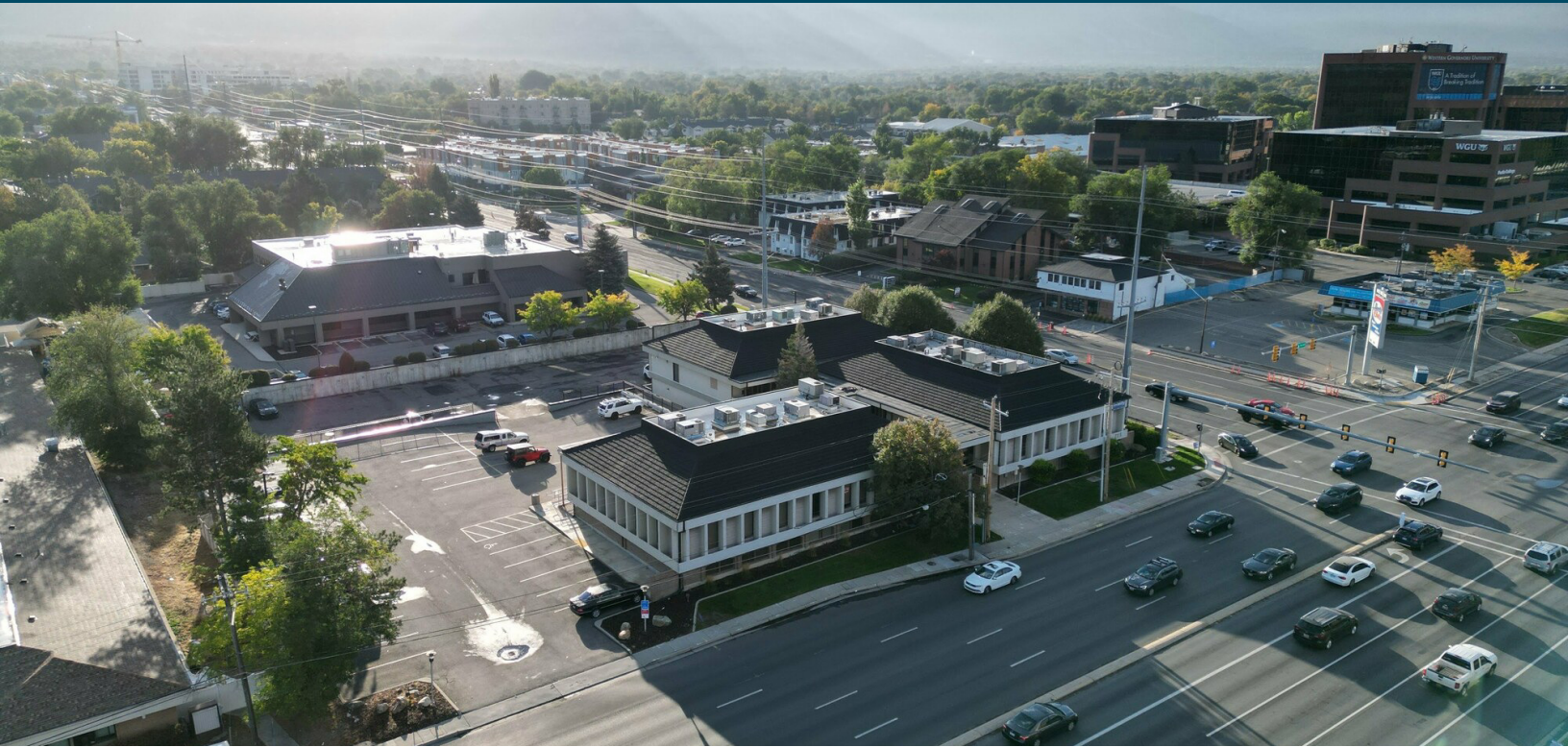
Vice President of Commercial Leasing  
385.469.0920  
evan@iraut.com

## ELLIOT ABEL

Associate Broker  
435.485.7070  
elliot@iraut.com

*380 - 515 SF of Office Space Available*

# PROPERTY SUMMARY



## LOCATION DESCRIPTION

This is an excellent professional office plaza. Clean offices in a convenient location off 700 East with excellent parking and access. Located at 715 East 3900 South, Salt Lake City, Utah, 84107.

## UNIT DESCRIPTION

Unit 202 features 2 rooms with an open reception/waiting area, and a large executive office behind the reception/waiting area separated by a wall and door.

Unit 212 is a fantastic corner unit featuring two sinks, two private office/rooms as well as an open lobby area and closet for storage. Common bathrooms on site.

Unit 112 is a dental/medical office in central Millcreek coming available January 1, 2026. The space includes

## OFFERING SUMMARY

Lease Rate:	\$17-23.07/SF/YR
Lease Type:	Full-Service
Number of Units Available:	1
Available SF:	380 - 515
Lot Size:	1.44
Parking Ratio:	3/1,000
ADA Parking Stalls:	5
Total Parking Stalls:	81
AADT:	26,000
Lease Term:	1-5 years
Available Date:	Now

**EVAN WRYE**

Vice President of Commercial Leasing  
385.469.0920  
evan@iraut.com

**ELLIOT ABEL**

Associate Broker  
435.485.7070  
elliott@iraut.com

Investment Realty Advisors  
411 W 7200 S, Suite 201, Midvale, UT 84047

# SITE AND AVAILABILTY



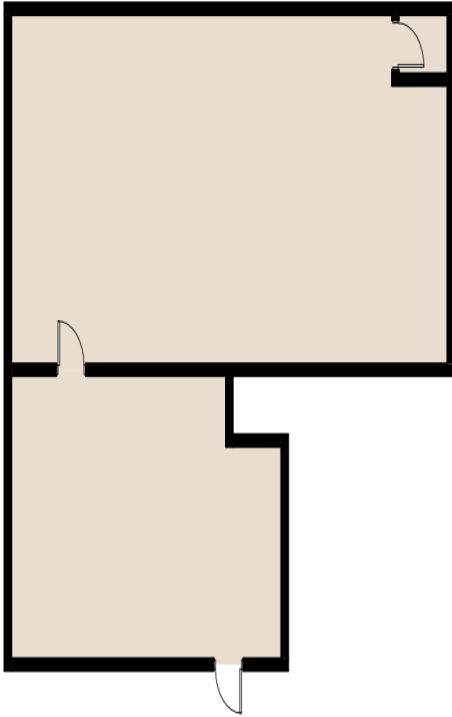
715 E 3900 S, SALT LAKE CITY, UT 84107

SUITE 202 | 380 SF

AVAILABLE NOW



380 Square Feet



EVAN WRYE

Vice President of Commercial Leasing  
385.469.0920  
evan@iraut.com

ELLIOT ABEL

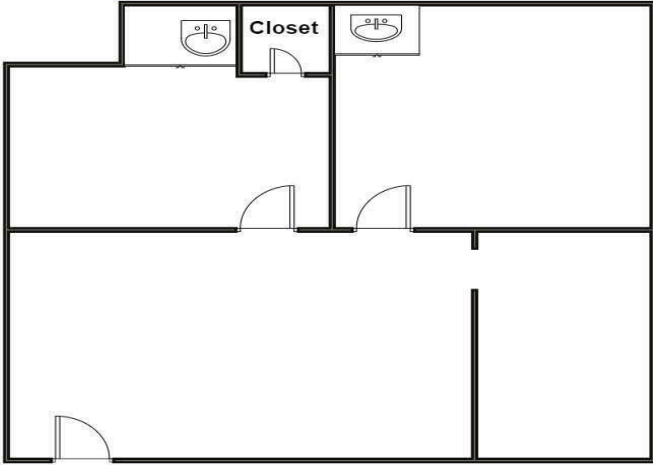
Associate Broker  
435.485.7070  
elliott@iraut.com

Investment Realty Advisors  
411 W 7200 S, Suite 201, Midvale, UT 84047

715 E 3900 S, SALT LAKE CITY, UT 84107

SUITE 212 | 515 SF

AVAILABLE NOW



**7th Plaza**  
Unit 212 - 515 SqFt



**EVAN WRYE**

Vice President of Commercial Leasing  
385.469.0920  
evan@iraut.com

**ELLIOT ABEL**

Associate Broker  
435.485.7070  
elliott@iraut.com

Investment Realty Advisors  
411 W 7200 S, Suite 201, Midvale, UT 84047

UNIT 112 | 2000 SF  
AVAILABLE NOW



**EVAN WRYE**  
Vice President of Commercial Leasing  
385.469.0920  
evan@iraout.com

**ELLIOT ABEL**  
Associate Broker  
435.485.7070  
elliott@iraout.com

Investment Realty Advisors  
411 W 7200 S, Suite 201, Midvale, UT 84047

# LOCATION MAP



Imagery ©2025 Airbus, Landsat / Copernicus, Maxar Technologies, USDA/FPAC/GEO

## EVAN WRYE

Vice President of Commercial Leasing  
385.469.0920  
evan@irauc.com

## ELLIOT ABEL

Associate Broker  
435.485.7070  
elliott@irauc.com

Investment Realty Advisors  
411 W 7200 S, Suite 201, Midvale, UT 84047