



 allars  
020 38 48 1399  
allars.com

GROUND FLOOR  
COMMERCIAL  
**TO LET**



11 - 27 Hythe Street, Dartford, DA1  
£8,333 pcm



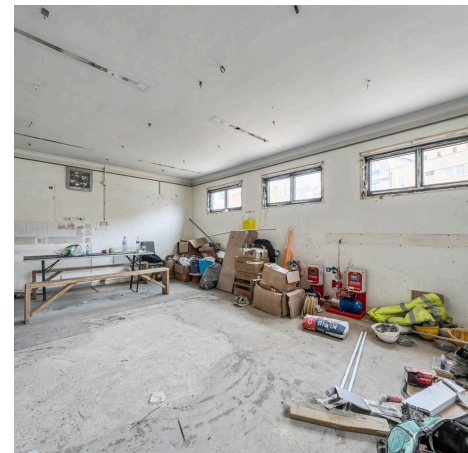
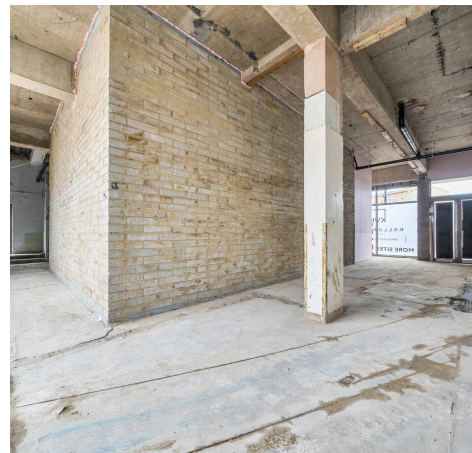
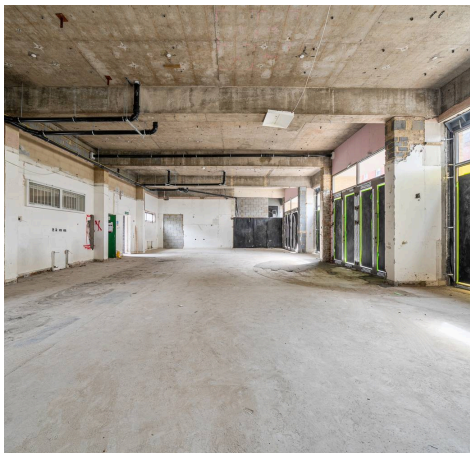
## 11 - 27 Hythe Street

Dartford, Kent, DA1

Prominent 3,843 sq ft Class E premises in Dartford town centre with open-plan retail area, office suite, multiple access points, and allocated parking. Suitable for various commercial uses.

Council Tax band: TBD

- Prime town centre location on Hythe Street, Dartford
- Impressive ground floor accommodation extending to approximately 3,843 sq ft (357 sq m)
- Striking frontage with multiple access points
- Expansive open-plan retail/showroom space
- Exceptional flexibility to suit a range of high-quality occupiers (STP)
- High footfall location close to local amenities and transport links
- Excellent natural light throughout
- Floor-to-ceiling windows
- High ceilings
- Commercial user class: E



# Hythe Street, Dartford, DA1

Approximate Area = 3843 sq ft / 357 sq m

For identification only - Not to scale

