



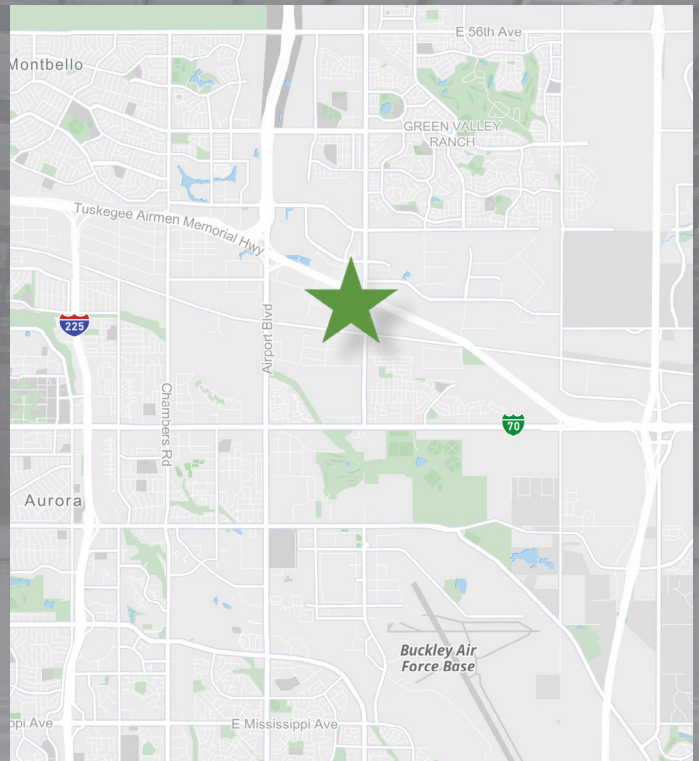
FOR LEASE 24,786 SF

18150 East 32nd Pl. Unit A Aurora, Colorado 80011

Class A industrial distribution building in the heart of the Northeast Denver submarket offering excellent I-70 access and visibility. Built in 2000. Front park/rear load design. One oversized drive-in door and ten dock-high doors.

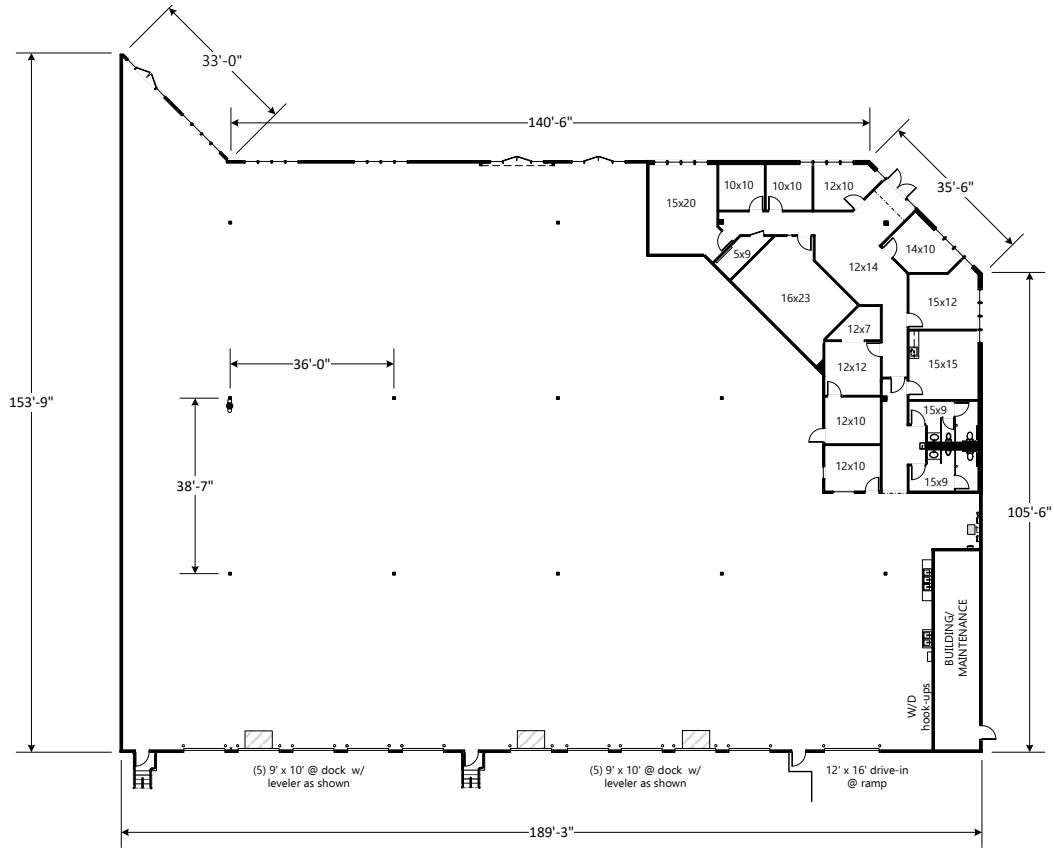
Highlights

Timing:	Immediately
Available SF:	24,786 SF
Office SF:	3,405 SF
Warehouse SF:	21,381 SF
Dock-high Doors	10 (9'x10')
Drive In:	1 (12'x16')
Clear Height:	24'
Sprinklers:	Yes
Power:	480V, 3PH, 200A (TBV)
Parking:	1.85/1,000 SF
Operating Expenses:	\$6.49/SF
Base Rent:	\$8.75/SF NNN



18150 East 32nd Pl. Unit A
Aurora, Colorado 80011

Space Plan



Owner Contact

John Strabel

Regional Director

8200 Park Meadows Drive, Unit 8226

Lone Tree, CO 80124

Direct: (248) 894-3974

jstrabel@firstindustrial.com



www.firstindustrial.com

Broker Contact

Todd Witty, SIOR

Senior Vice President

(720) 528 6339 | todd.witty@cbre.com

Nic Carter

Vice President

(720) 528 6477 | nic.carter@cbre.com



www.cbre.com