

# HWY 277 S ABILENE TX / 3.78 ACRES

2016 Hwy 277 S, Abilene, TX 79606



Presented By

**MATTHEW MUZECHENKO**

325.439.1420

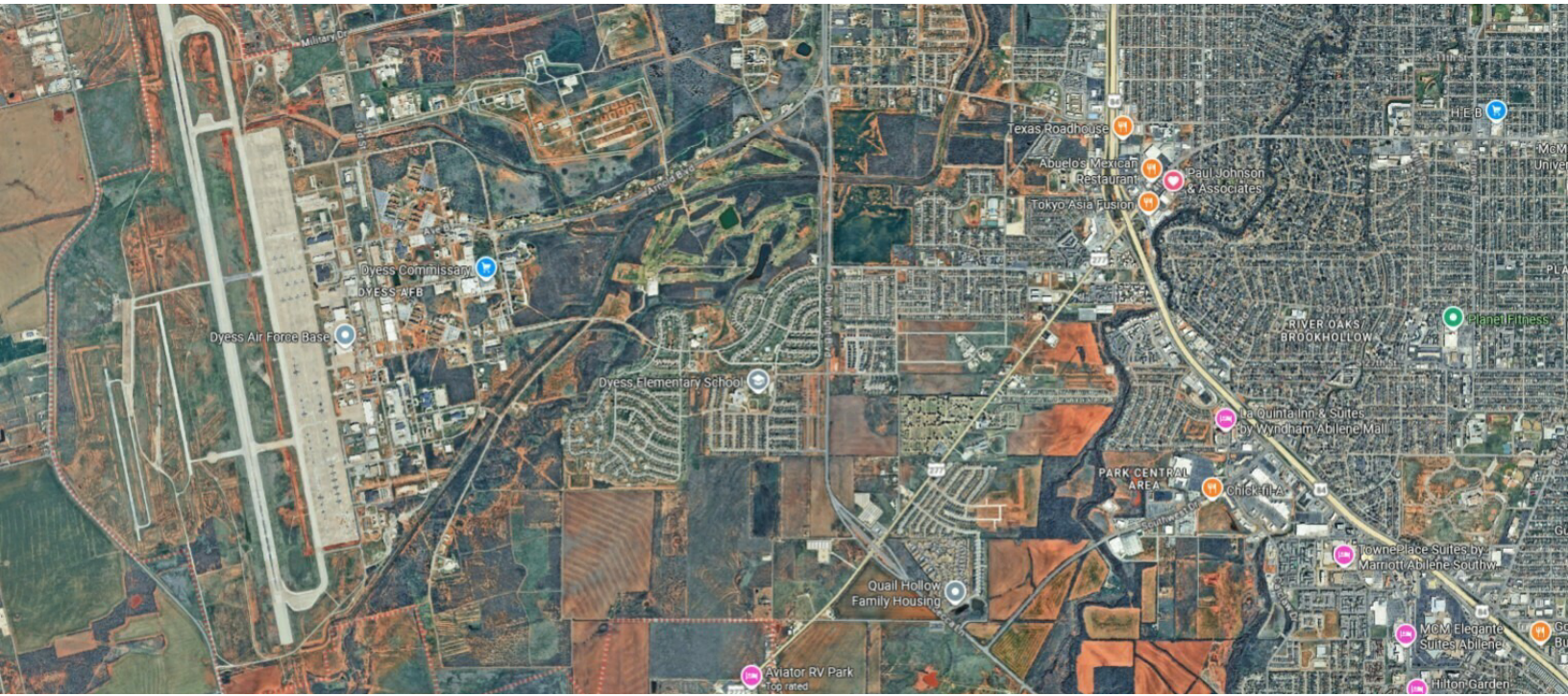
[matt@pauljohnsonrealtors.com](mailto:matt@pauljohnsonrealtors.com)

[PAULJOHNSONREALTORS.COM](http://PAULJOHNSONREALTORS.COM)

# HWY 277 S ABILENE TX / 3.78 ACRES

EXECUTIVE  
SUMMARY

2016 Hwy 277 S, Abilene, TX 79606



## OFFERING SUMMARY

Sale Price:	\$895,000.00
Lot Size:	3.78 Acres
Zoning:	GC - General Commercial
Market:	ABILENE
Submarket:	SW ABILENE
Price / SF:	\$5.44

## PROPERTY OVERVIEW

Generous commercial land parcel situated directly on Highway 277, offering clear frontage for branding and signage. The property resides within the Goggans Addition, providing a ready-made lot layout ideal for a future commercial or mixed-use development. Utility access lines parallel the highway, while the terrain remains unencumbered, allowing for efficient site planning and adaptability. Investors will appreciate unrestricted views from the highway and the chance to shape a prominent presence on this primary corridor. This tract delivers simplicity and flexibility for ground-up development to meet diverse leasing or owner-user plans.

## PROPERTY HIGHLIGHTS

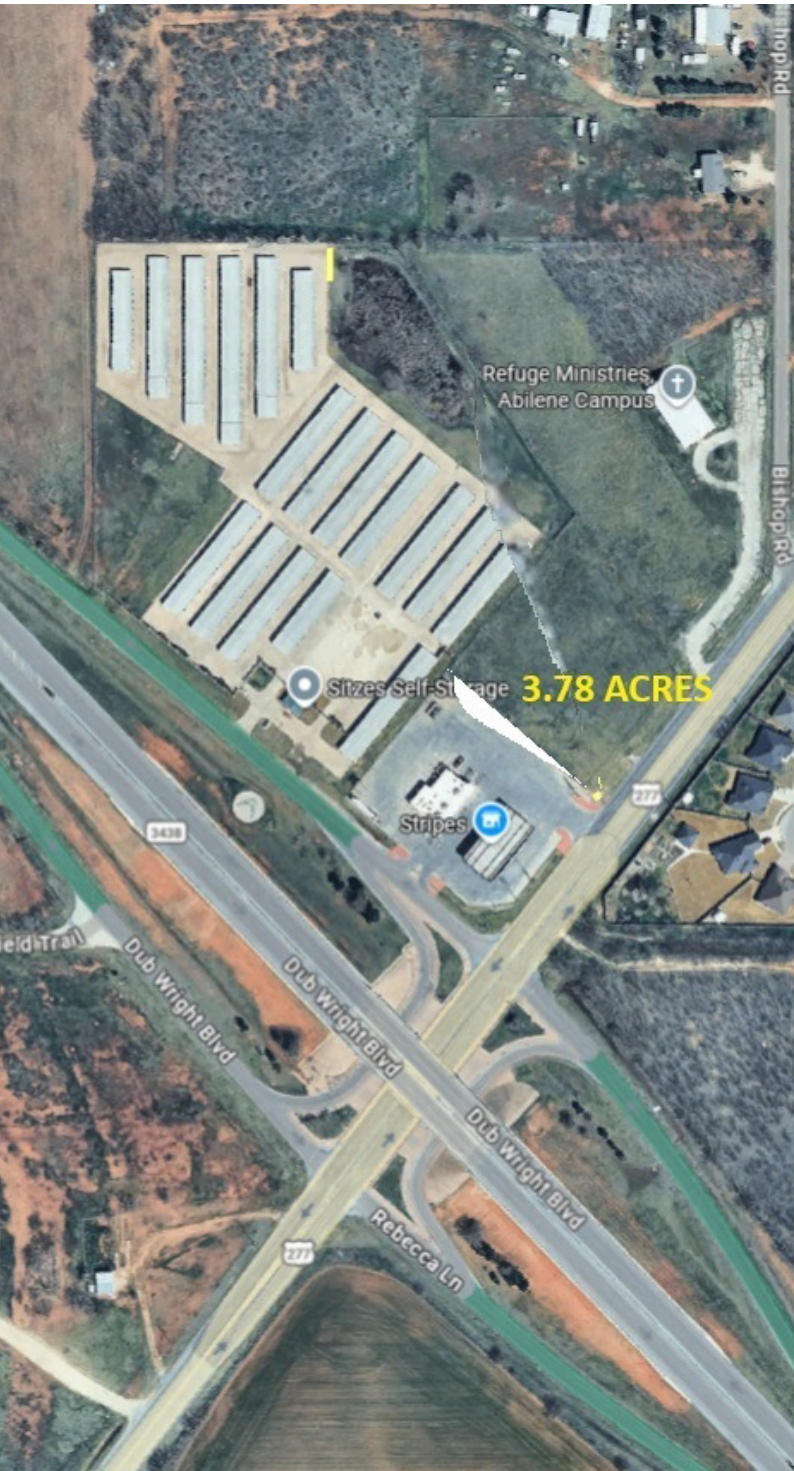
- Hwy 277 S Abilene Tx / 3.78 Acres
- Zoning GC - General Commercial
- High traffic with excellent visibility
- Utilities: Electric, Gas (Atmos), Water & Sewer (City of Abilene) Internet
- Ideal for future retail, service, or hospitality



# HWY 277 S ABILENE TX / 3.78 ACRES

2016 Hwy 277 S, Abilene, TX 79606

PROPERTY  
DESCRIPTION



## PROPERTY DESCRIPTION

Generous commercial land parcel situated directly on Highway 277, offering clear frontage for branding and signage. The property resides within the Goggans Addition, providing a ready-made lot layout ideal for a future commercial or mixed-use development. Utility access lines parallel the highway, while the terrain remains unencumbered, allowing for efficient site planning and adaptability. Investors will appreciate unrestricted views from the highway and the chance to shape a prominent presence on this primary corridor. This tract delivers simplicity and flexibility for ground-up development to meet diverse leasing or owner-user plans.

## LOCATION DESCRIPTION

Commercial parcel located on Highway 277 within the Goggans Addition in Abilene, Texas, providing straightforward highway exposure near central Taylor County amenities.

## SITE DESCRIPTION

Located in SW Abilene near Dyess Air Force Base adjacent to Stripes C-Store and Sites Self Storage Facility.

## UTILITIES DESCRIPTION

SEWER - CITY OF ABILENE

WATER - CITY OF ABILENE

GAS - ATMOS

ELECTRIC - AEP

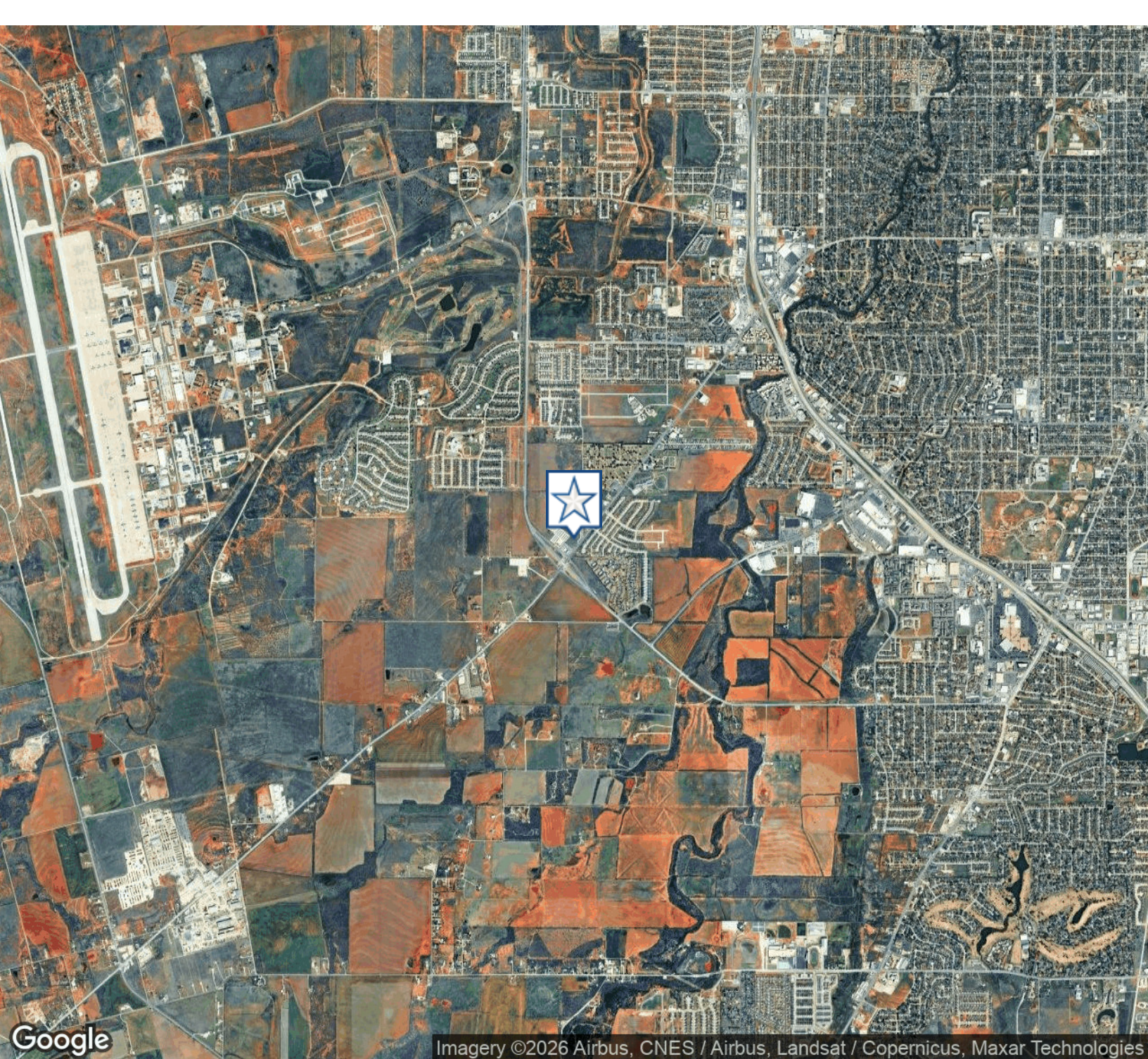
INTERNET - AVAILABLE



# HWY 277 S ABILENE TX / 3.78 ACRES

AERIAL  
MAP

2016 Hwy 277 S, Abilene, TX 79606



Google

Imagery ©2026 Airbus, CNES / Airbus, Landsat / Copernicus, Maxar Technologies

