



Talavi Spectrum

5701 W Talavi Blvd, Glendale, AZ 85306



IDEAL FOR MEDICAL USERS | CLASS A OFFICE SPACE AVAILABLE

Kathleen Morgan

Managing Director
1 602 809 1048
kathleen.morgan@transwestern.com

Kevin Smigiel

Vice President
1 602 550 9295
kevin.smigiel@transwestern.com

Vince Femiano

Managing Director
1 602 791 3310
vince.femiano@transwestern.com

Andrew Olivet

Associate
1 602 370 2685
andrew.olivet@transwestern.com

Property Features

▪ ±1,007 RSF - ±19,440 RSF Available

- Class A Space with exceptional freeway access
- Ample on-site parking
- Move-in ready spaces available
- Building signage available
- Close proximity to multiple hospitals
- Covered, reserved parking available



Talavi Spectrum

5701 W Talavi Blvd, Glendale, AZ

FIRST FLOOR

- **Suite 110:** ±1,007 RSF
- **Suite 170-190:** ±19,440 RSF
(Divisible to 3,000 RSF)

SECOND FLOOR

- **Suite 210:** ±2,578 SF

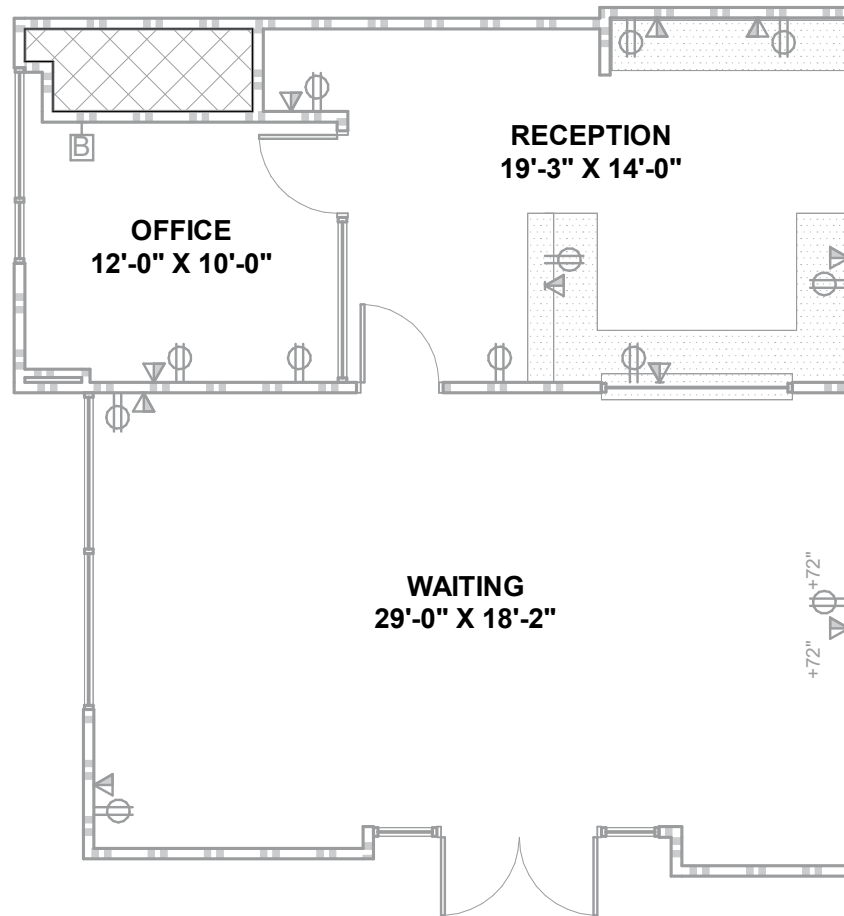
LEASE RATE

- **Medical Suites:** \$25.00 NNN
- **Office Suites:** \$22.00 NNN



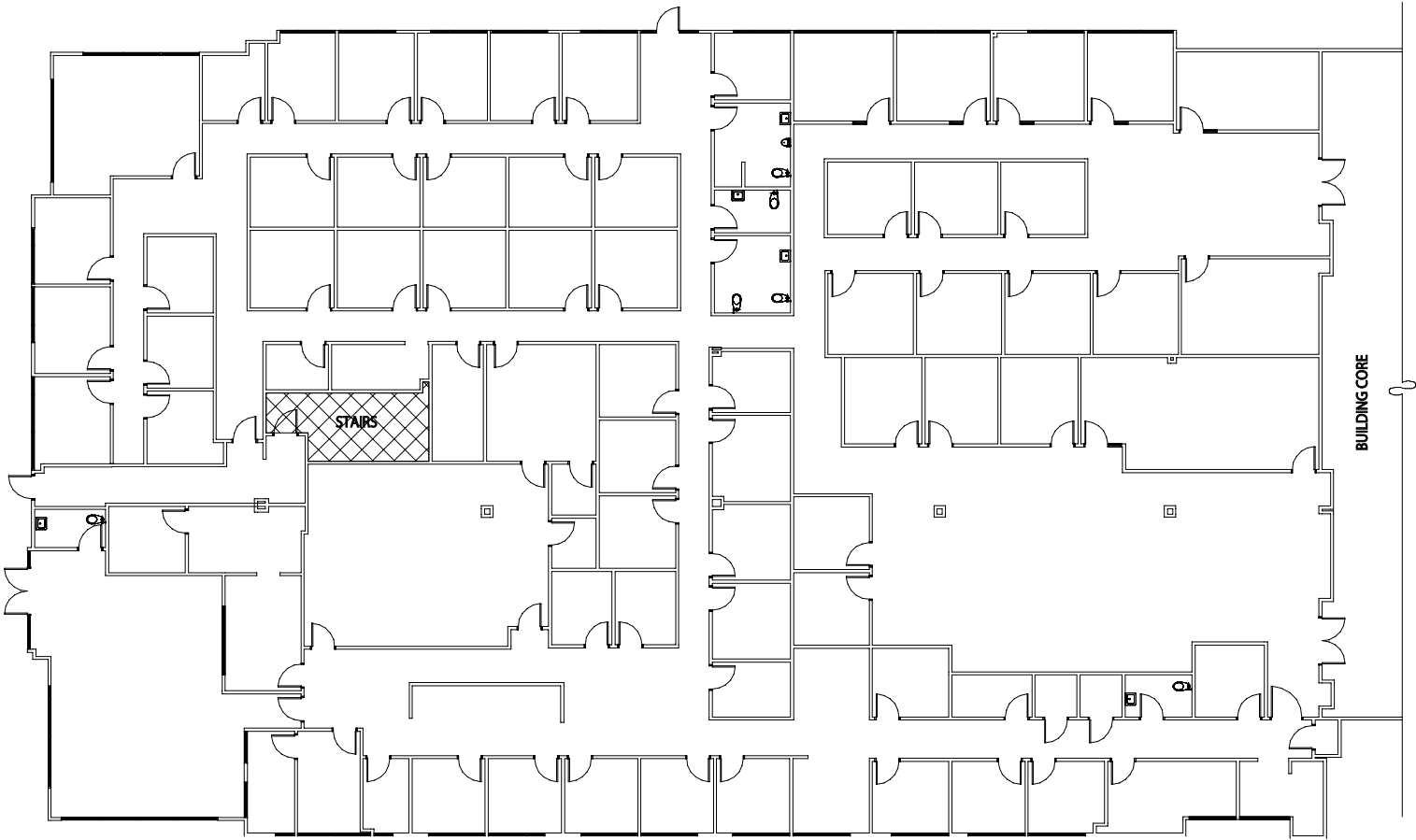
1st Floor

Suite 110: 1,007 RSF



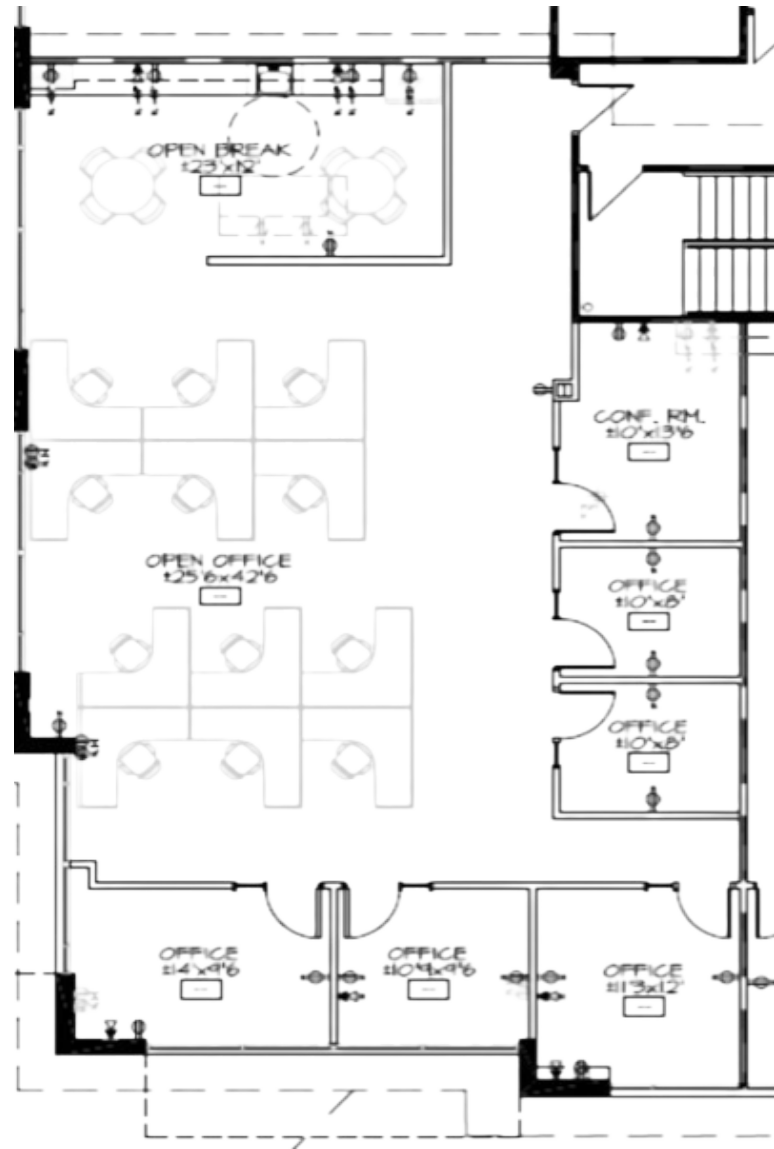
1st Floor

Suite 170-190: 19,440 RSF



2nd Floor

Suite 210: ±2,578 RSF



Aerial Overview





Deer Valley High School

WinCo
FOODS

CARRABBA'S
ITALIAN RESTAURANT

Spina's
RESTAURANT
CLEAN FOOD

N 57TH AVE

DOLLAR TREE

Mor
Furniture for less

LA FITNESS

BELL RD

OUTBACK
STEAKHOUSE

PICKLEBALL
SPACE

STRATOSPHERE

KOHL'S

AAA

GLOBAL
CREDIT UNION

W TALAVI BLVD

N 57TH AVE



Transwestern

Kathleen Morgan
Managing Director
1 602 809 1048
kathleen.morgan@transwestern.com

Kevin Smigiel
Vice President
1 602 550 9295
kevin.smigiel@transwestern.com

Vince Femiano
Managing Director
1 602 791 3310
vince.femiano@transwestern.com

Andrew Olivet
Associate
1 602 370 2685
andrew.olivet@transwestern.com