

RETAIL SPACE FOR LEASE



294 COWESETT AVENUE

West Warwick, RI 02893

DAN FEINER

Vice President
401.751.3200 x3310
dan@mgcommercial.com

MG COMMERCIAL

365 Eddy Street, Penthouse Suite
Providence, RI 02903
401.751.3200 | mgcommercial.com

PROPERTY SUMMARY

RETAIL SPACE FOR LEASE



PROPERTY DESCRIPTION

New six-unit retail strip center with one space remaining for lease. 1,012 SF inline space (24' x 44') with storefront parking and building signage available. New construction with nice curb appeal, surrounded by local, regional, and national tenants. Open space with front windows and back area space for storage. Great for retail and office use. Join this active retail center with great visibility.

PROPERTY HIGHLIGHTS

- 1,012 SF retail end-cap
- New construction
- Storefront parking
- 24,000 +/- Cars per day
- Active retail trade area
- Ideal for retail or office use
- 30 Parking spaces
- One space available

LOCATION DESCRIPTION

6,072 SF prime retail center on very busy Cowesett Avenue, located just off RT. 2 in West Warwick. The site is across the street from Cumberland Farms and the Cowesett Plaza, and is located on a high-traffic street in a busy trade area.

OFFERING SUMMARY

| | |
|----------------|-------------------------|
| Lease Rate: | \$1,700 per month (NNN) |
| Available SF: | 1,012 SF |
| Building Size: | 6,072 SF |
| Space: | Unit 5 |

DEMOGRAPHICS

| | 1 MILE | 3 MILES | 5 MILES |
|-------------------|----------|-----------|-----------|
| Total Population | 9,669 | 62,323 | 130,491 |
| Average HH Income | \$90,862 | \$109,849 | \$116,572 |

DAN FEINER
 Vice President
 401.751.3200 x3310
 dan@mgcommercial.com

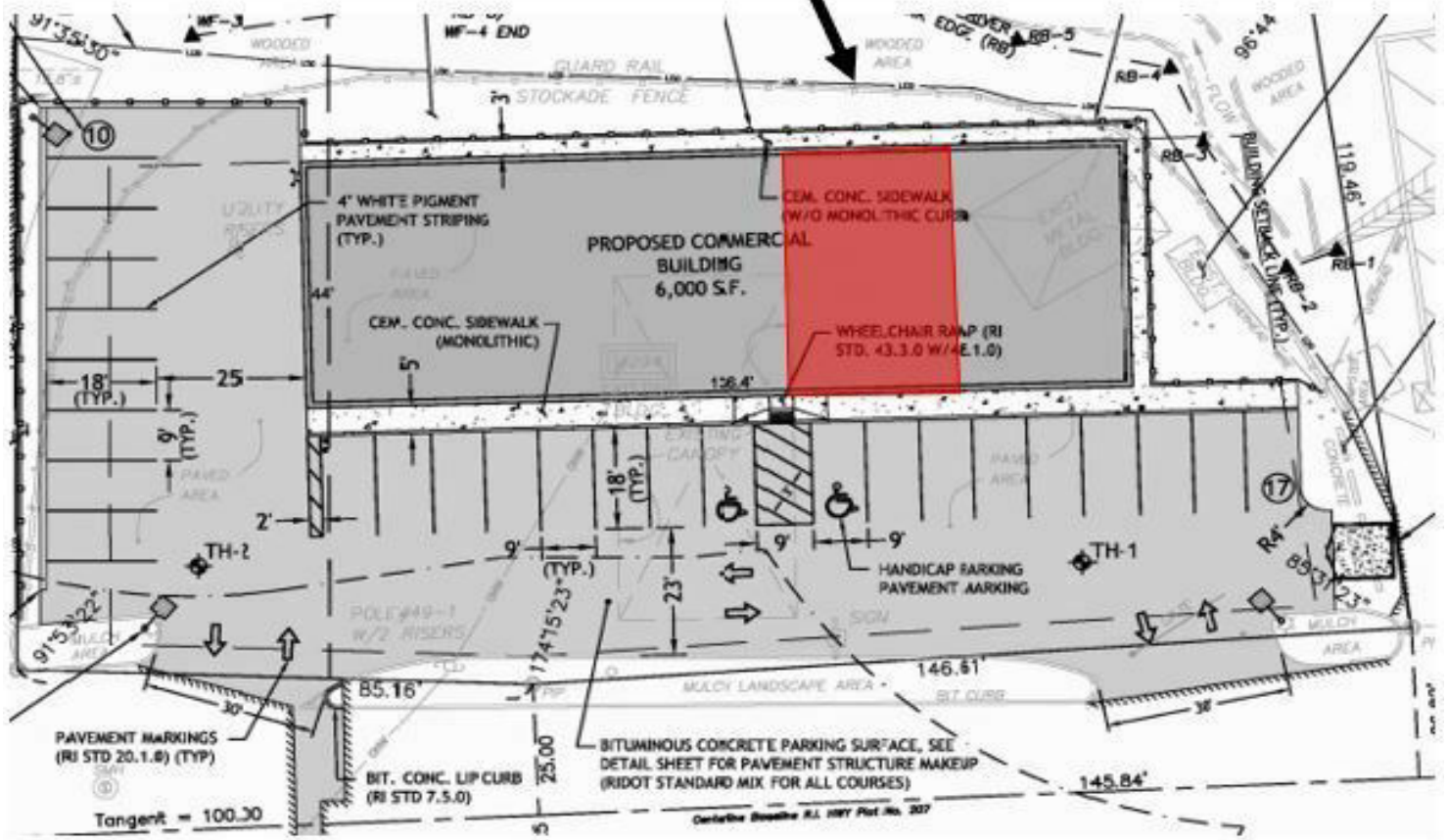
365 Eddy Street, Penthouse Suite
 Providence, RI 02903
 mgcommercial.com



SITE PLAN

RETAIL SPACE FOR LEASE

AVAILABLE SPACE



DAN FEINER
Vice President
401.751.3200 x3310
dan@mgcommercial.com

365 Eddy Street, Penthouse Suite
Providence, RI 02903
mgcommercial.com



RETAILER MAP

RETAIL SPACE FOR LEASE



DAN FEINER
 Vice President
 401.751.3200 x3310
 dan@mgcommercial.com

365 Eddy Street, Penthouse Suite
 Providence, RI 02903
 mgcommercial.com

