



FOR LEASE

# OFFICE SPACE

2030 Straits Turnpike, Middlebury, CT 06762

## SUMMARY

Discover Your Perfect Office Space in Middlebury, CT.

Welcome to our building nestled in the heart of Middlebury, CT, where tranquility meets productivity. Are you seeking a place where your business can thrive in a peaceful and beautiful environment? Look no further! Our recently renovated office building offers an opportunity to elevate your workspace and enhance your professional success.

Whether you're a start-up, an established enterprise, or a creative agency, our flexible office spaces can be tailored to accommodate your unique requirements.

All utilities are included in your rent, ensuring a hassle-free experience. Additionally, our dedicated maintenance team is just a call away, ready to swiftly address any issues that may arise. Focus on your core business, knowing that your office space is well-maintained and in good hands.

Don't miss out on this opportunity to elevate your work environment and unlock your business's full potential. Contact us now to schedule a tour and witness the perfect harmony of tranquility and productivity firsthand. Your dream workspace awaits!

**JULIA SOUZA**

**C: (917) 676-8461**

**O: (860) 815-8800 Ext: 25**

**[julia@doverbenedictgroup.com](mailto:julia@doverbenedictgroup.com)**

**J-R LALIBERTE**

**C: (860) 309-0378**

**O: (860) 815-8800 Ext: 18**

**[jr@doverbenedictgroup.com](mailto:jr@doverbenedictgroup.com)**

**[focusspaces.com](https://focusspaces.com)**



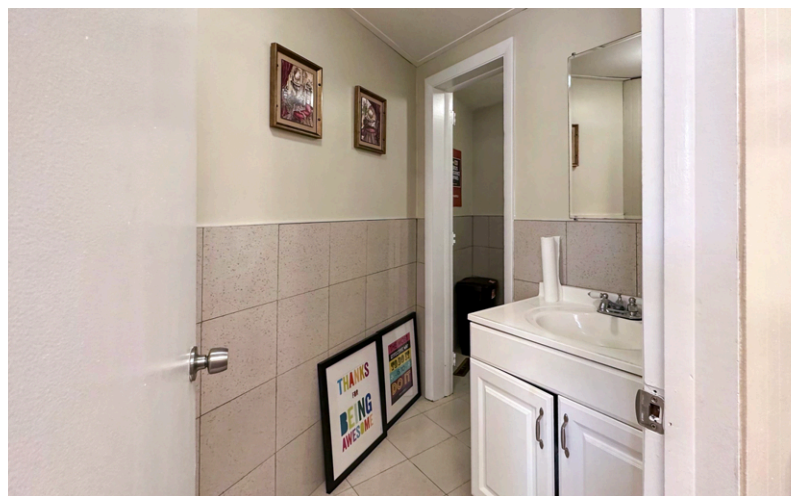
## HIGHLIGHTS

- Compatible tenant mix
- ADA-compliant
- 2021 renovation
- All utilities included
- Pylon sign
- Private parking
- Quiet and safe location
- Wheelchair ramp
- 24 hours access

JULIA SOUZA  
C: (917) 676-8461  
O: (860) 815-8800 Ext: 25  
[julia@doverbenedictgroup.com](mailto:julia@doverbenedictgroup.com)

J-R LALIBERTE  
C: (860) 309-0378  
O: (860) 815-8800 Ext: 18  
[jr@doverbenedictgroup.com](mailto:jr@doverbenedictgroup.com)

[focuspaces.com](https://www.focuspaces.com)



## Unit LL2

- \$1,900 per month
- 820 sf
- 3 offices and reception area
- Fresh paint
- LED lights
- Natural light
- Private restroom
- New floors
- New carpets

JULIA SOUZA  
C: (917) 676-8461  
O: (860) 815-8800 Ext: 25  
julia@doverbenedictgroup.com

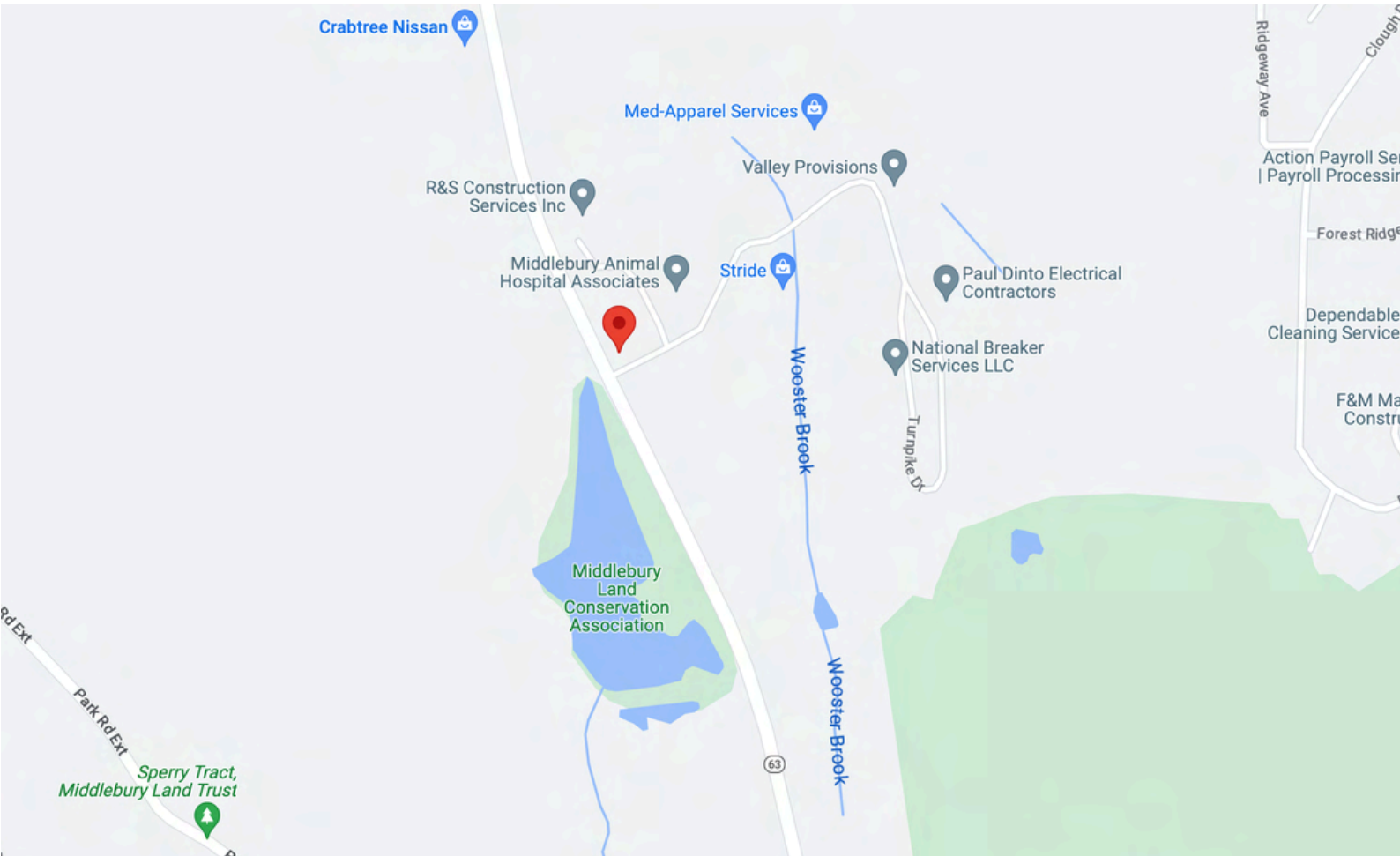
J-R LALIBERTE  
C: (860) 309-0378  
O: (860) 815-8800 Ext: 18  
jr@doverbenedictgroup.com

focusspaces.com

FOR LEASE

# OFFICE SPACE

2030 Straits Turnpike, Middlebury, CT 06762



## WE HAVE SPACES FOR ANY TYPE OF BUSINESS

Located in central Connecticut, The Dover Benedict Group is a commercial property holdings company focused on offering spaces to businesses of any size within Connecticut.

## OFFICE | RETAIL | MEDICAL | HOSPITALITY | INDUSTRIAL | FLEX | SPECIALTY

Our vast variety of properties are always renovated with a great amount of pride to create a positive image for all of our tenants.