

FOR LEASE



## PROPERTY DETAILS

1596 S. 500 W., Bountiful, UT 84087

LEASE RATE: \$20.00/SF MODIFIED GROSS

- 1,494 SF available
- Main floor suite
- 4/1,000 parking ratio
- Centrally located between 2600 South and 500 West I-15 exits
- CAM fee included in lease rate
- Tenant pays in-suite cleaning, gas, and electricity
- FF&E available
- Do not disturb existing tenant

### NEARBY AMENITIES:



# NEWMARK

## MOUNTAIN WEST

**BRAXTON WILLIE, CCIM**

[bwillie@newmarkmw.com](mailto:bwillie@newmarkmw.com)

direct 801.803.3334

[View Profile](#)

**BRANSON WOOD**

[bwood@newmarkmw.com](mailto:bwood@newmarkmw.com)

direct 801.510.5207

[View Profile](#)

FULL SERVICE  
COMMERCIAL REAL ESTATE

312 East South Temple

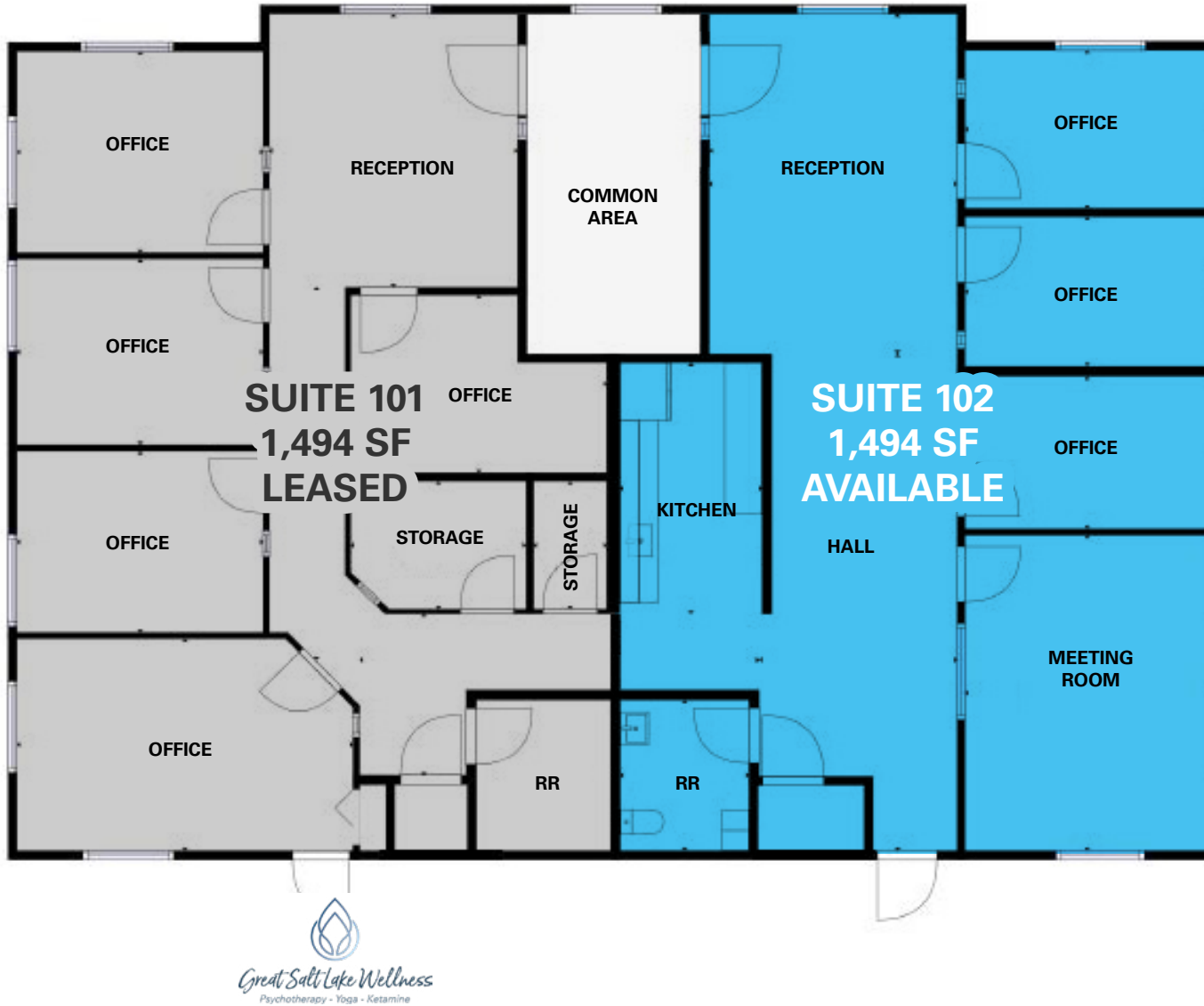
Salt Lake City, Utah 84111

Office 801.456.8800

[www.newmarkmw.com](http://www.newmarkmw.com)

# FIRST FLOOR PLAN

## LEXINGTON COMMONS BUILDING 1596



# NEWMARK

**MOUNTAIN WEST**

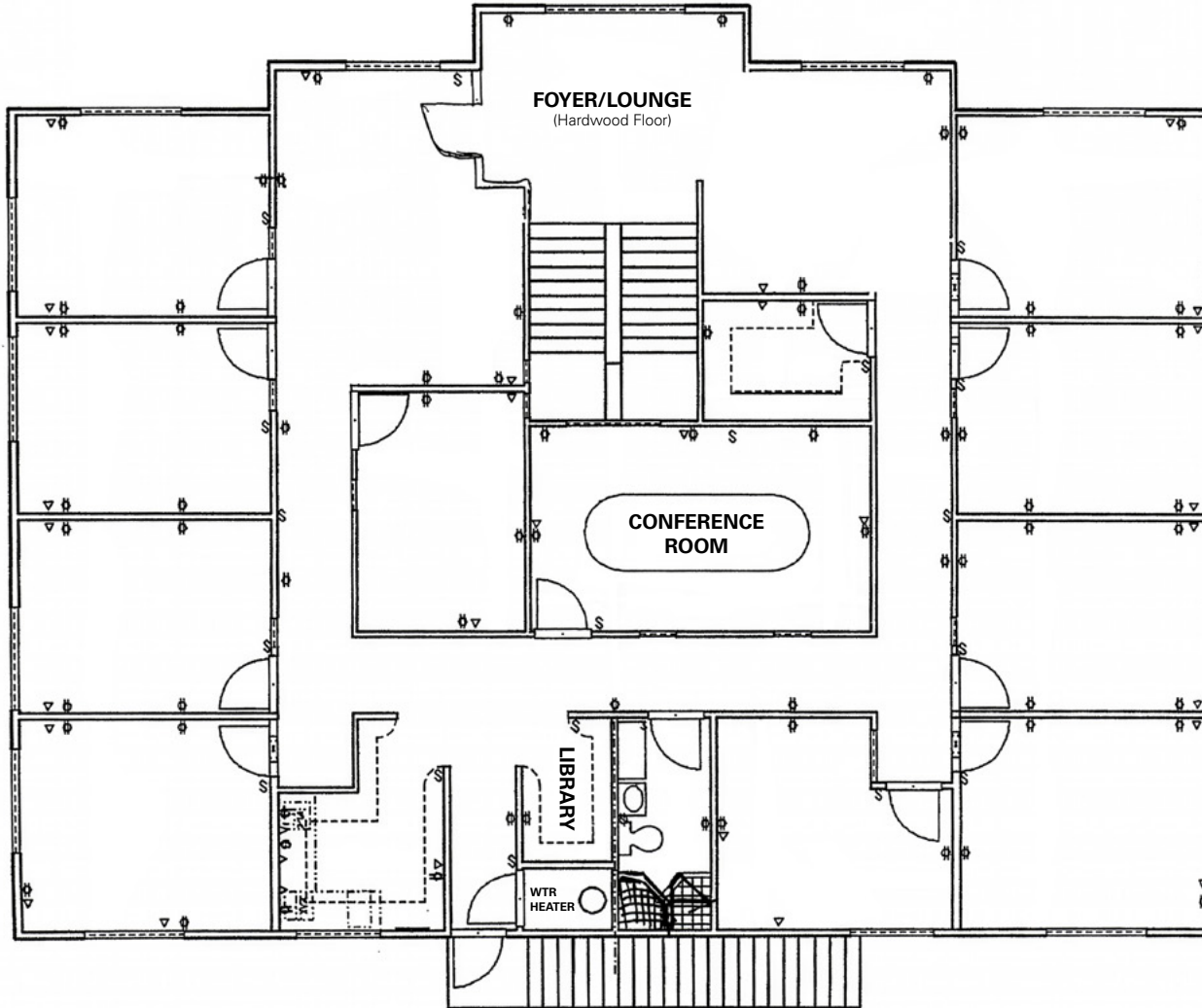
**BRAXTON WILLIE, CCIM**  
bwillie@newmarkmw.com  
direct 801.803.3334  
[View Profile](#)

**BRANSON WOOD**  
bwood@newmarkmw.com  
direct 801.510.5207  
[View Profile](#)

**FULL SERVICE  
COMMERCIAL REAL ESTATE**  
312 East South Temple  
Salt Lake City, Utah 84111  
Office 801.456.8800  
[www.newmarkmw.com](http://www.newmarkmw.com)

SECOND FLOOR PLAN

AVAILABLE FOR  
OWNER/USER



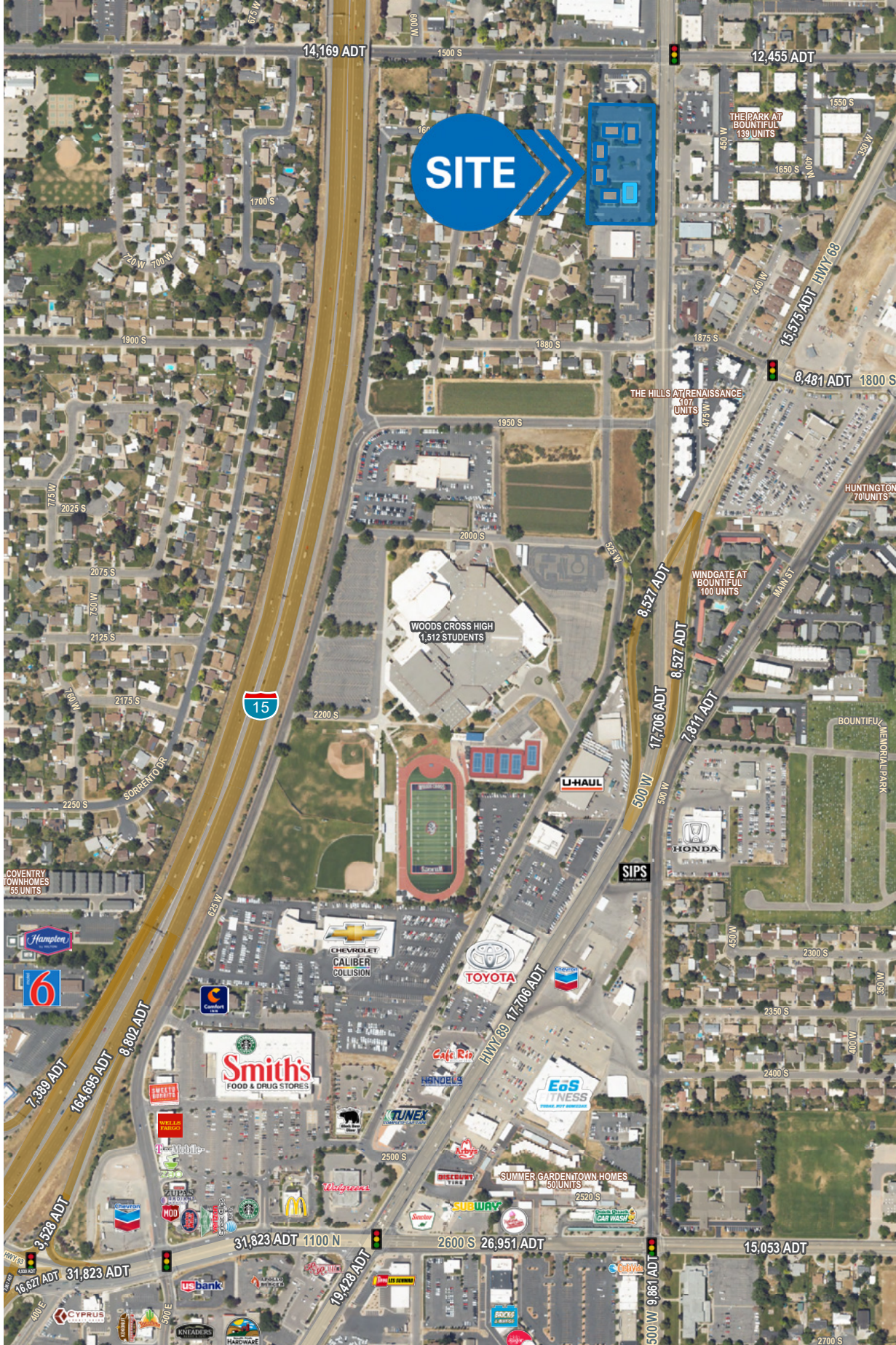
**NEWMARK**

**MOUNTAIN WEST**

**BRAXTON WILLIE, CCIM**  
bwillie@newmarkmw.com  
direct 801.803.3334  
[View Profile](#)

**BRANSON WOOD**  
bwood@newmarkmw.com  
direct 801.510.5207  
[View Profile](#)

**FULL SERVICE  
COMMERCIAL REAL ESTATE**  
312 East South Temple  
Salt Lake City, Utah 84111  
Office 801.456.8800  
[www.newmarkmw.com](http://www.newmarkmw.com)



**BRAXTON WILLIE, CCIM**  
 bwillie@newmarkmw.com  
 direct 801.803.3334  
[View Profile](#)

**BRANSON WOOD**  
 bwood@newmarkmw.com  
 direct 801.510.5207  
[View Profile](#)

**FULL SERVICE  
 COMMERCIAL REAL ESTATE**  
 312 East South Temple  
 Salt Lake City, Utah 84111  
 Office 801.456.8800  
[www.newmarkmw.com](http://www.newmarkmw.com)