



# ±3,200 SF CLEAR SPAN WAREHOUSE NEAR GRAND CAILLOU RD

166 THOMPSON RD HOUMA, LA 70363



OFFERED: FOR LEASE

## LEASE RATE: \$1,800 PER MONTH

### ±3,200 SF | NNN LEASE

- Clear span construction
- Grade-level access
- Ample parking
- A block away from Grand Caillou Rd (LA 57)

**CONTACT:**

CADEN LEBLANC  
337.446.3536

800.895.9329 | <https://elifinrealty.com> | June 2026

640 Main St, Suite A, Baton Rouge, LA 70801

Broker of Record, Mathew Laborde; Licensed by the Louisiana, Mississippi, and Ohio Real Estate Commissions. This information has been secured from sources we believe to be reliable, but we make no representations or warranties, expressed or implied, as to the accuracy of the information. References to square footage or age are approximate. Interested parties must verify the information and bears all risk for any inaccuracies.

# OFFERING SUMMARY



## PROPERTY SUMMARY

- Now for lease, 166 Thompson Rd offers ±3,200 SF of warehouse space in Houma.
- The property features clear span construction, providing an open and efficient layout, along with grade-level access.
- Ample parking is available, making it a convenient option for a variety of industrial or storage users.
- Located just one block off Grand Caillou Rd (LA 57), the site benefits from excellent connectivity.
- NNN lease type.

---

### CONTACT:

CADEN LEBLANC  
337.446.3536

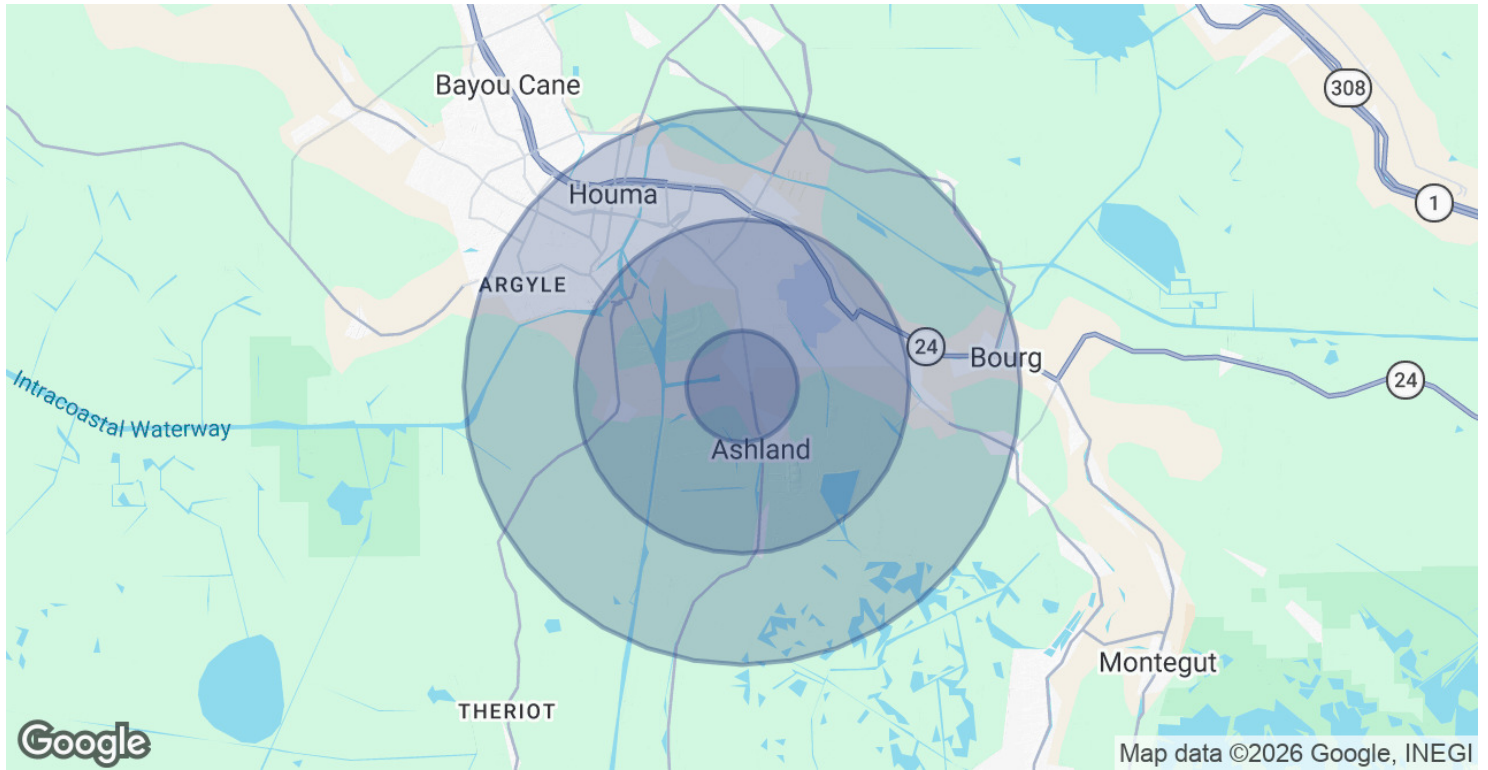
# EXTERIOR PHOTOS



**CONTACT:**  
**CADEN LEBLANC**  
**337.446.3536**

800.895.9329 | <https://elifinrealty.com> | June 2026  
640 Main St, Suite A, Baton Rouge, LA 70801  
Broker of Record, Mathew Laborde; Licensed by the Louisiana, Mississippi, and Ohio Real Estate Commissions. This information has been secured from sources we believe to be reliable, but we make no representations or warranties, expressed or implied, as to the accuracy of the information. References to square footage or age are approximate. Interested parties must verify the information and bears all risk for any inaccuracies.

# DEMOGRAPHICS MAP & REPORT



## POPULATION

|                      | 1 MILE | 3 MILES | 5 MILES |
|----------------------|--------|---------|---------|
| Total Population     | 1,373  | 12,292  | 40,065  |
| Average Age          | 33     | 38      | 40      |
| Average Age (Male)   | 33     | 37      | 39      |
| Average Age (Female) | 33     | 38      | 41      |

## HOUSEHOLDS & INCOME

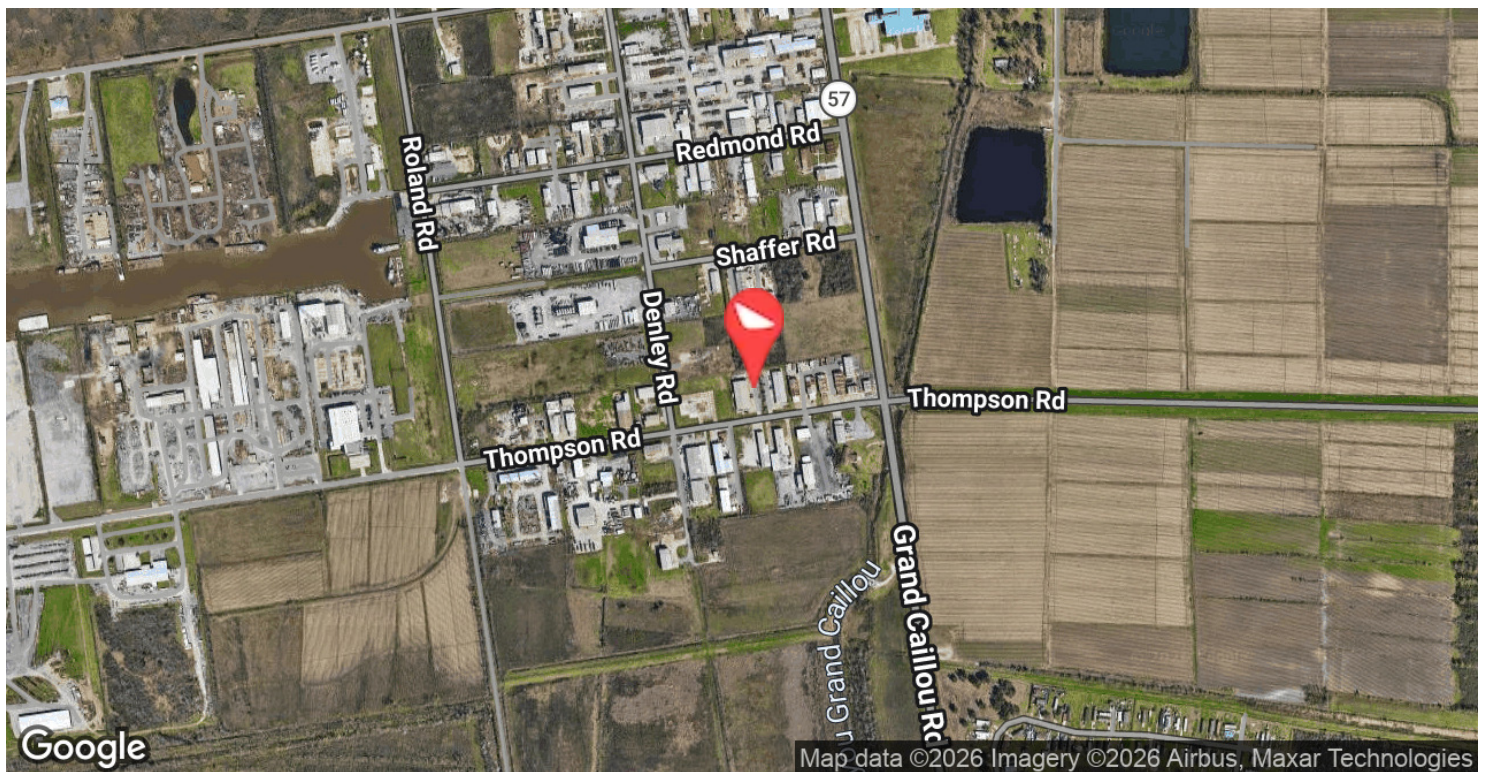
|                     | 1 MILE    | 3 MILES   | 5 MILES   |
|---------------------|-----------|-----------|-----------|
| Total Households    | 382       | 4,194     | 15,019    |
| # of Persons per HH | 3.6       | 2.9       | 2.7       |
| Average HH Income   | \$78,577  | \$78,140  | \$85,587  |
| Average House Value | \$154,827 | \$177,437 | \$234,338 |

2020 American Community Survey (ACS)

## CONTACT:

CADEN LEBLANC  
337.446.3536

# LOCATION MAPS



**CONTACT:**  
CADEN LEBLANC  
337.446.3536

800.895.9329 | <https://elifinrealty.com> | June 2026  
640 Main St, Suite A, Baton Rouge, LA 70801  
Broker of Record, Mathew Laborde; Licensed by the Louisiana, Mississippi, and Ohio Real Estate Commissions. This information has been secured from sources we believe to be reliable, but we make no representations or warranties, expressed or implied, as to the accuracy of the information. References to square footage or age are approximate. Interested parties must verify the information and bears all risk for any inaccuracies.