

Renderings Only



FOR LEASE



Retail Land Built-to-suit

3580 Lexington Ave, Shoreview, MN 55126

Dan Altstatt
 Commercial Brokerage
 612.404.0157
 dan@redbrickcommercial.com



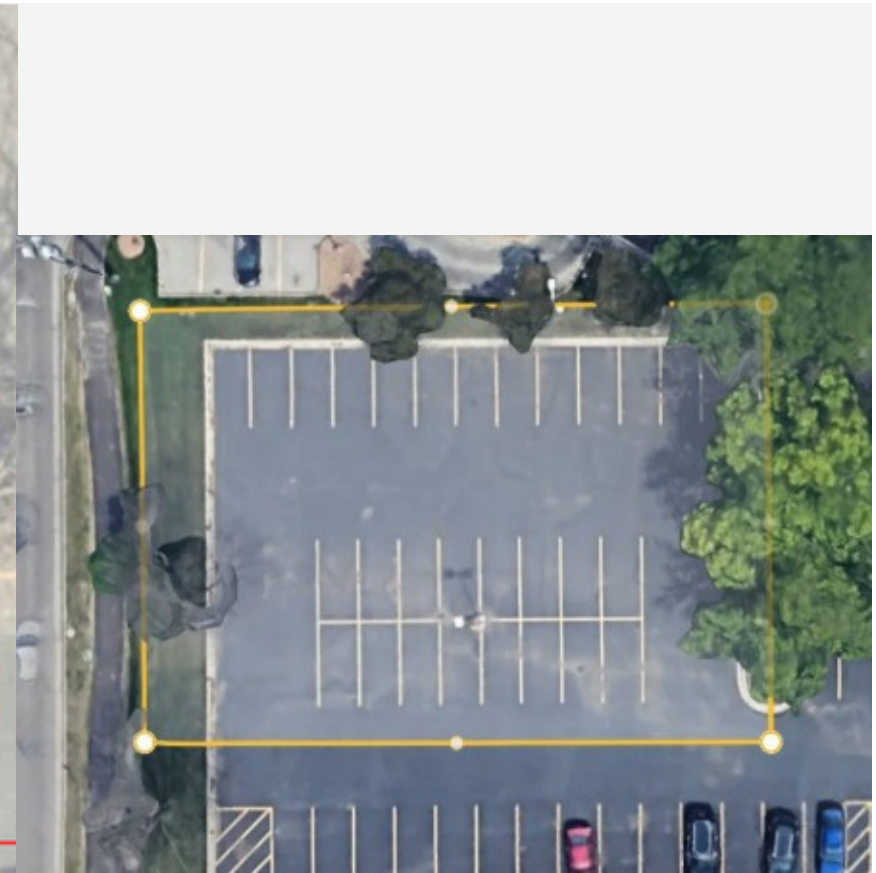
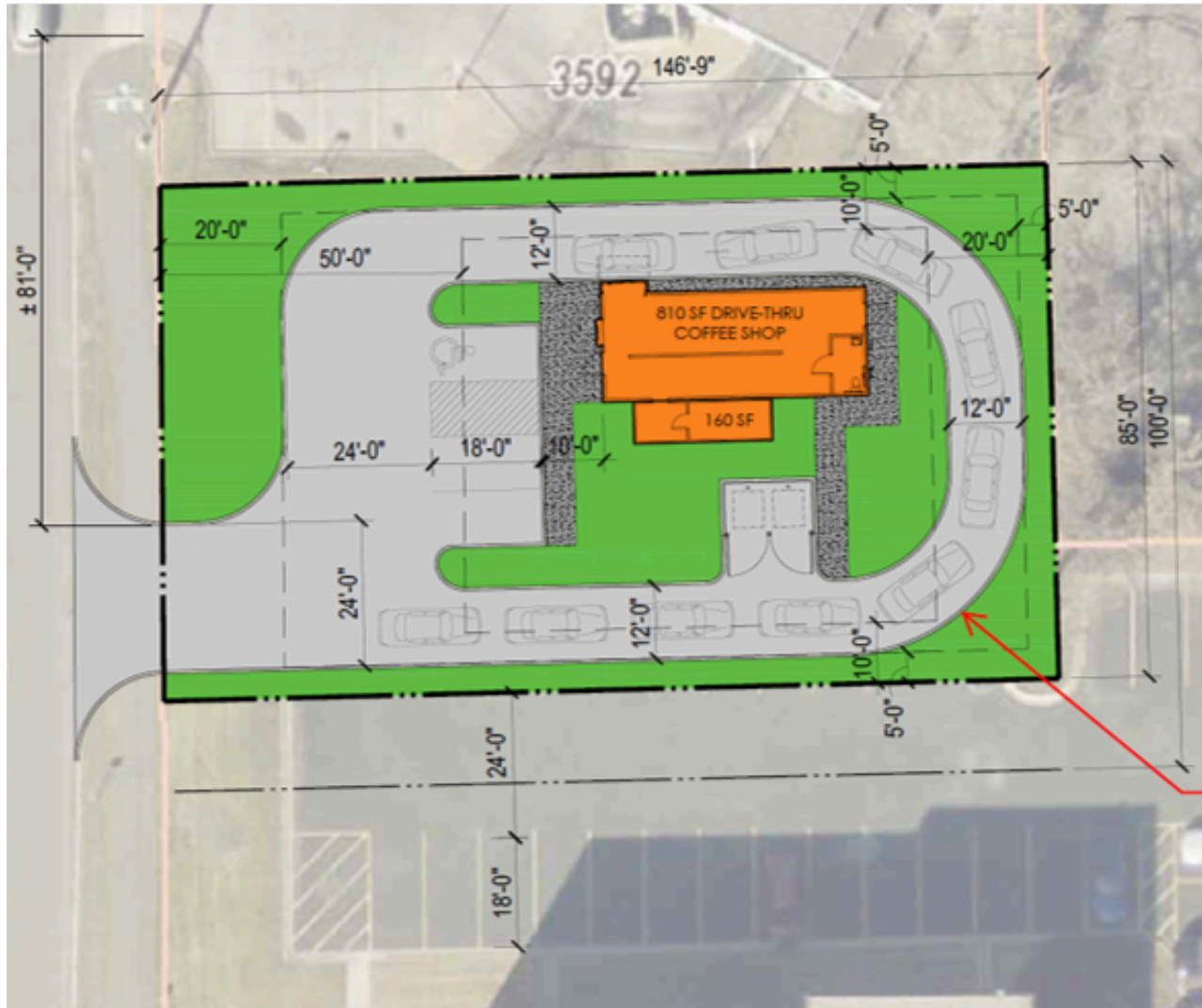
Executive Summary

3580 Lexington Ave,
Shoreview, MN

- Drive thru retail use on approximately .31 acres
- Build-to-Suit or ground lease
- Well-located retail district on the border of Shoreview and Arden Hills
- Ready for construction Spring 2026

Site Plans

3580 Lexington Ave,
Shoreview, MN



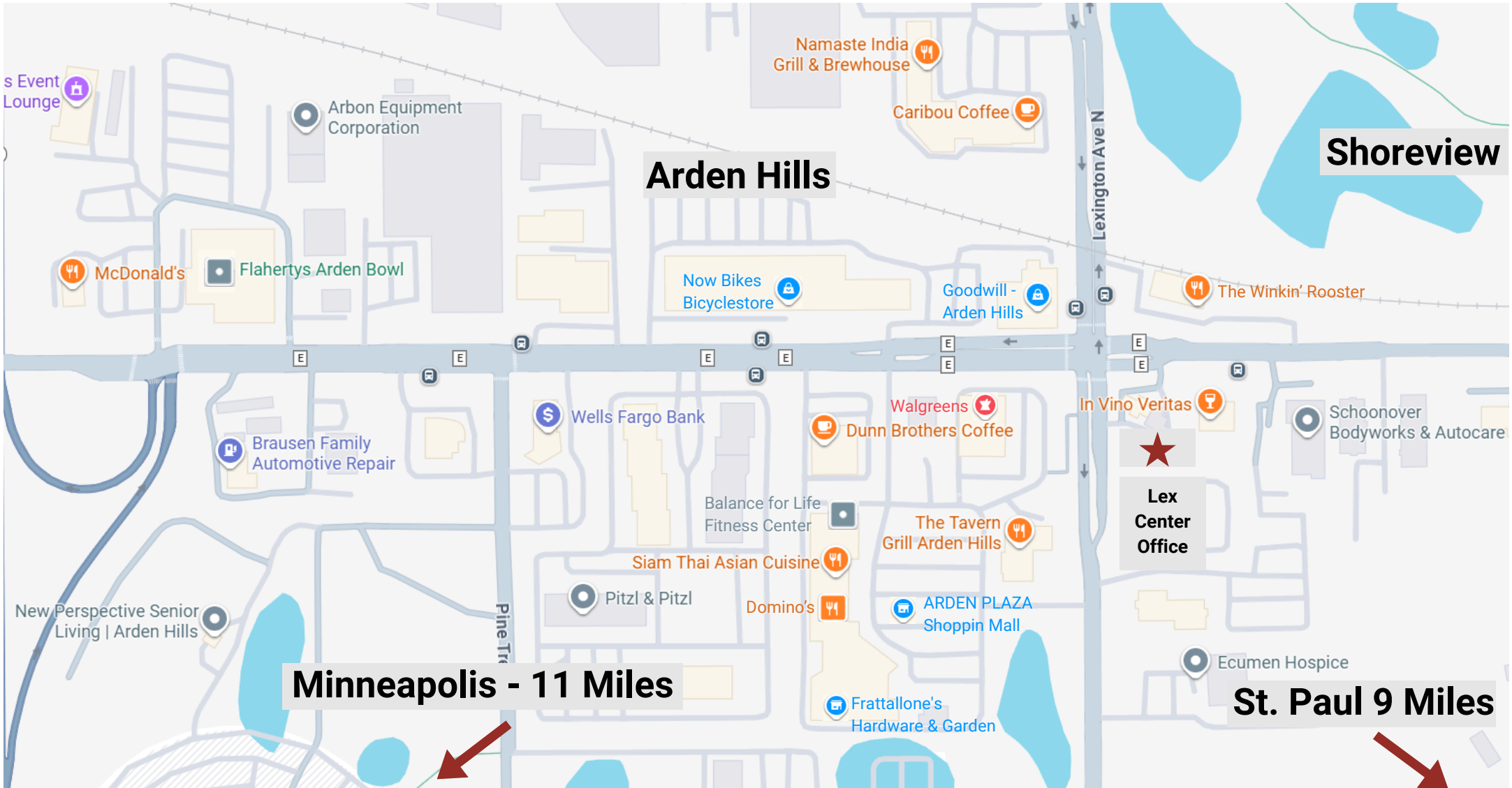
- 400-1,000 SF Proposed Drive-Thru Retail Shop

Location Map

3580 Lexington Ave, Shoreview, MN

★ **Subject Property**

- 🍴 Restaurants
- 🏥 Healthcare
- 🏢 Other Institutions/Businesses
- 🏪 Retail Stores
- 🏦 Bank



Contact Information

3580 Lexington Ave,
Shoreview, MN

Dan Altstatt, CCIM

Redbrick Commercial

3570 Lexington Ave., Suite 150

Shoreview, MN 55126

612-404-0157

dan@redbrickcommercial.com