

16350  
VENTURA BLVD

LOS ANGELES, CA 91436



Jones Lang LaSalle Brokerage, Inc. Real Estate License #: 01856260

ABOUT THE PROPERTY

# The Details



**ADDRESS**

16350 VENTURA BLVD.,  
LOS ANGELES, CA



**AVAILABILITY**

1,699 SF



**POSSESSION**

60 DAYS



**PRICING**

UPON REQUEST



**PARKING**

COVERED PARKING ON SITE





# Highlights

- CO-TENANTS INCLUDE JERSEY MIKES, MENDOCINO FARMS, COLOR ME MINE, CLAUDINE KITCHEN
- 132 MULTIFAMILY UNITS ONSITE
- AMPLE COVERED PARKING ONSITE
- DENSE RETAIL, OFFICE, AND RESIDENTIAL CORRIDOR



FLOOR PLAN

# 16350 Ventura Blvd

---

## Unit Details

---

**USE**

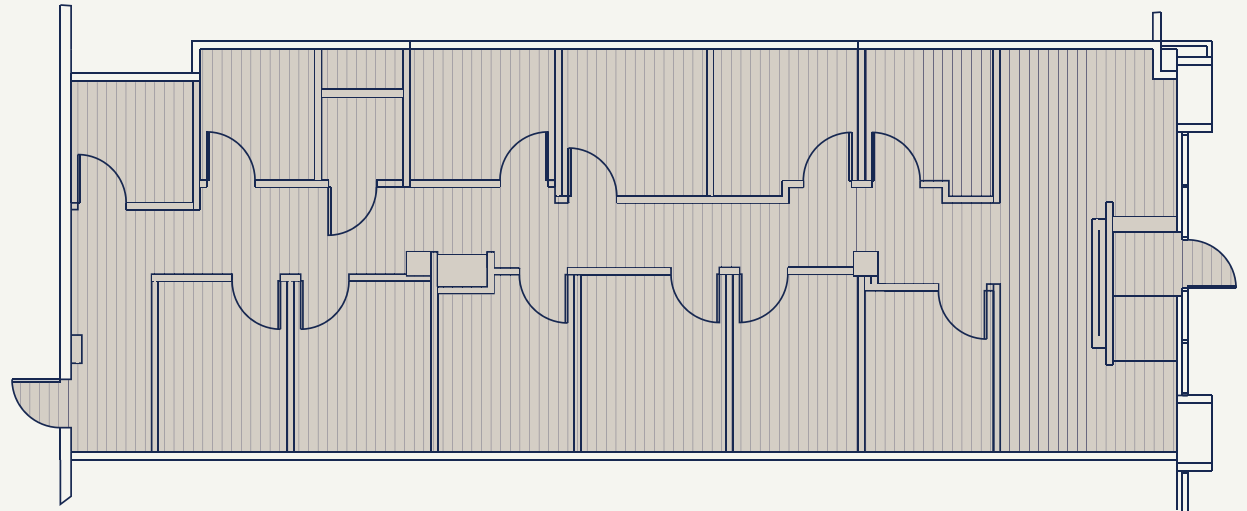
RETAIL

**SQUARE FOOTAGE**

1,699 SF

**UNIT HIGHLIGHTS**

- Ideal uses include Fitness, Med Spa, & more
- Previously used as Massage Place
- Existing co-tenants are established, high foot-traffic businesses.



# Neighborhood



IDEAL RETAIL DEMOGRAPHICS WITHIN 3 MILES

# Demographics

**\$159K**

AVERAGE HOUSEHOLD  
INCOME

**55.6%**

COLLEGE DEGREE  
OR HIGHER

**177K**

DAYTIME POPULATION

**\$3.45B**

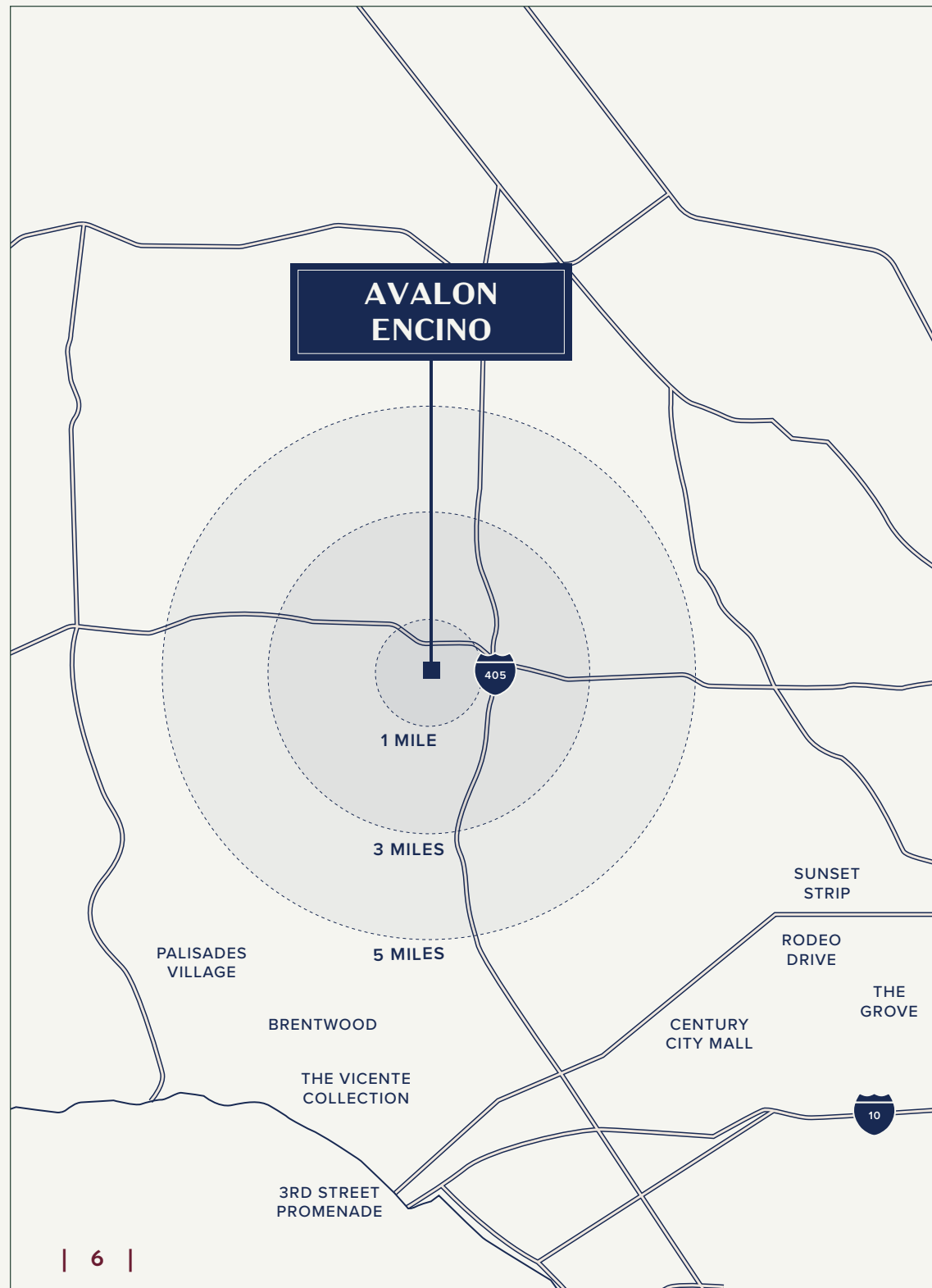
RETAIL SPENDING

**40.6**

MEDIAN AGE

**\$1.18M**

MEDIAN HOME VALUE



16350  
VENTURA  
BLVD

---

CONTACT US

---

MATTHEW FAINCHEIN

*Managing Director*

matthew.fainchtein@jll.com

+1 310 430 2548

CA LIC. #01503546

RYAN HAWLEY

*Vice President*

ryan.hawley@jll.com

+1 213 393 3300

CA LIC. #02146998



Jones Lang LaSalle Brokerage, Inc. Real Estate License #: 01856260

Although information has been obtained from sources deemed reliable, JLL does not make any guarantees, warranties or representations, express or implied, as to the completeness or accuracy as to the information contained herein. Any projections, opinions, assumptions or estimates used are for example only. There may be differences between projected and actual results, and those differences may be material. JLL does not accept any liability for any loss or damage suffered by any party resulting from reliance on this information. If the recipient of this information has signed a confidentiality agreement with JLL regarding this matter, this information is subject to the terms of that agreement. ©2026 Jones Lang LaSalle Brokerage, Inc. All rights reserved.