

OLD US-23 HARTLAND TWP., MICHIGAN

LAND FOR SALE
158.85 Acres Available



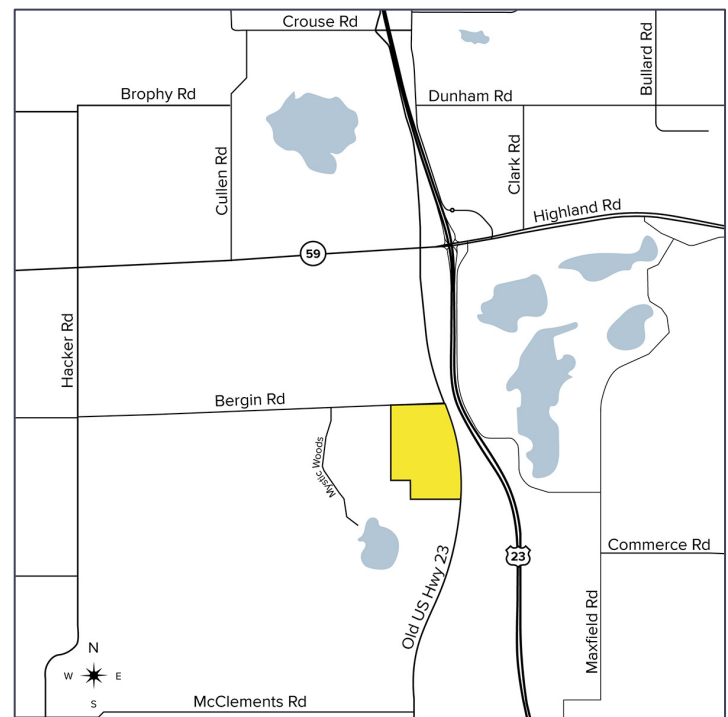
**SIGNATURE
ASSOCIATES**
KNOW SIGNATURE | KNOW RESULTS

GREAT LOCATION



PROPERTY FEATURES

- 158.85 acres – can be split
- 60 acres zoned light industrial total
 - 18, 20, 22 acres can be split
- 42 acres zoned residential total
 - 20 and 22 acre parcels can be split
- Great location just south of US-23 and M-59 Interchange
- Contact broker for pricing info
- Seller will consider seller financing or contributing land to a development



For more information, please contact:

JEFF LEMANSKI
(248) 359 0641
jlemanski@signatureassociates.com

STEVE GORDON
(248) 948 0101
sgordon@signatureassociates.com

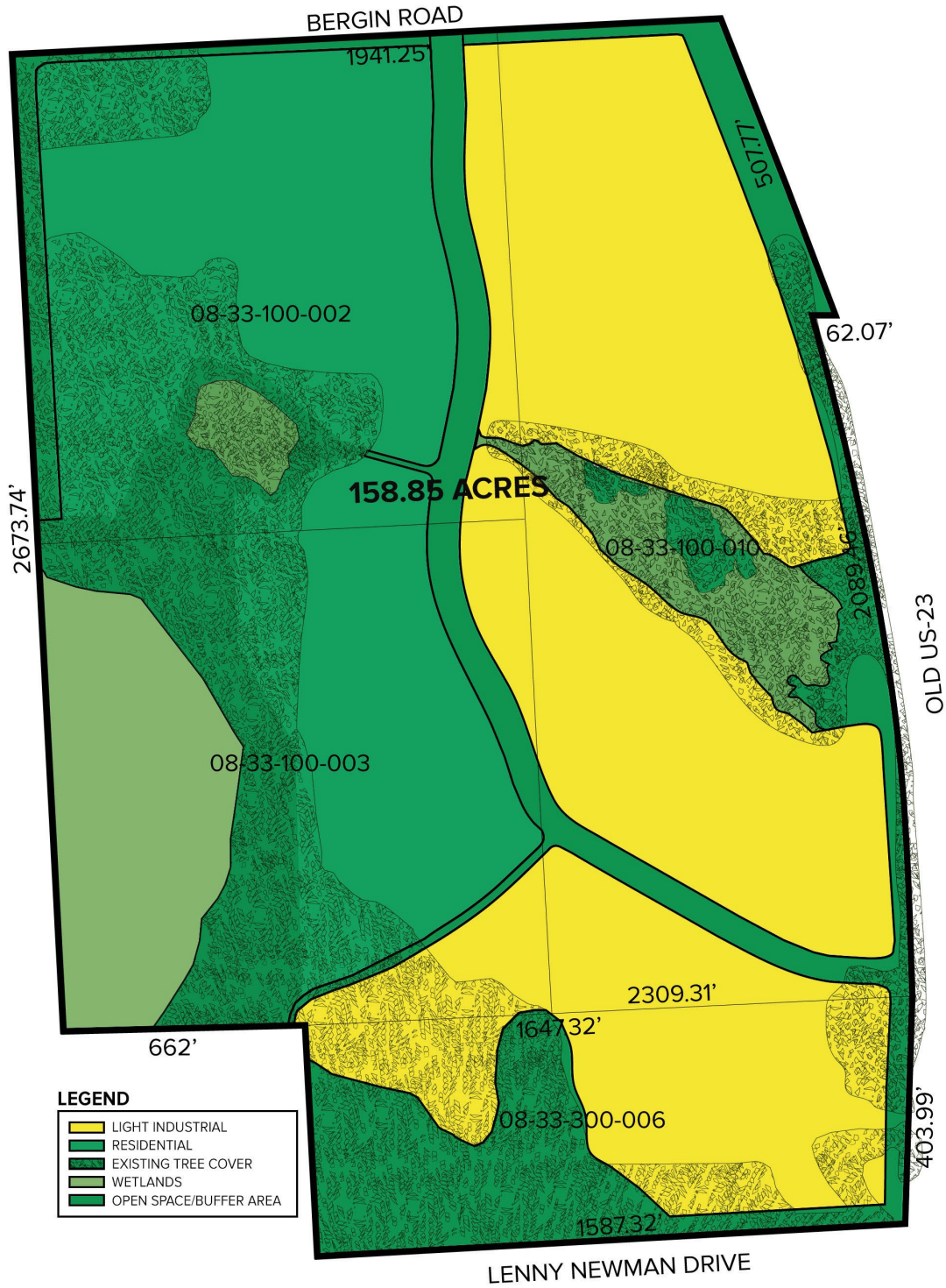
SIGNATURE ASSOCIATES
One Towne Square, Suite 1200
Southfield, MI 48076
www.signatureassociates.com

Old US-23 – Hartland Twp., Michigan

Land For Sale

158.85
Acres
AVAILABLE

Parcel Map



For more information, please contact:

JEFF LEMANSKI
(248) 359 0641
jlemanski@signatureassociates.com

STEVE GORDON
(248) 948 0101
sgordon@signatureassociates.com

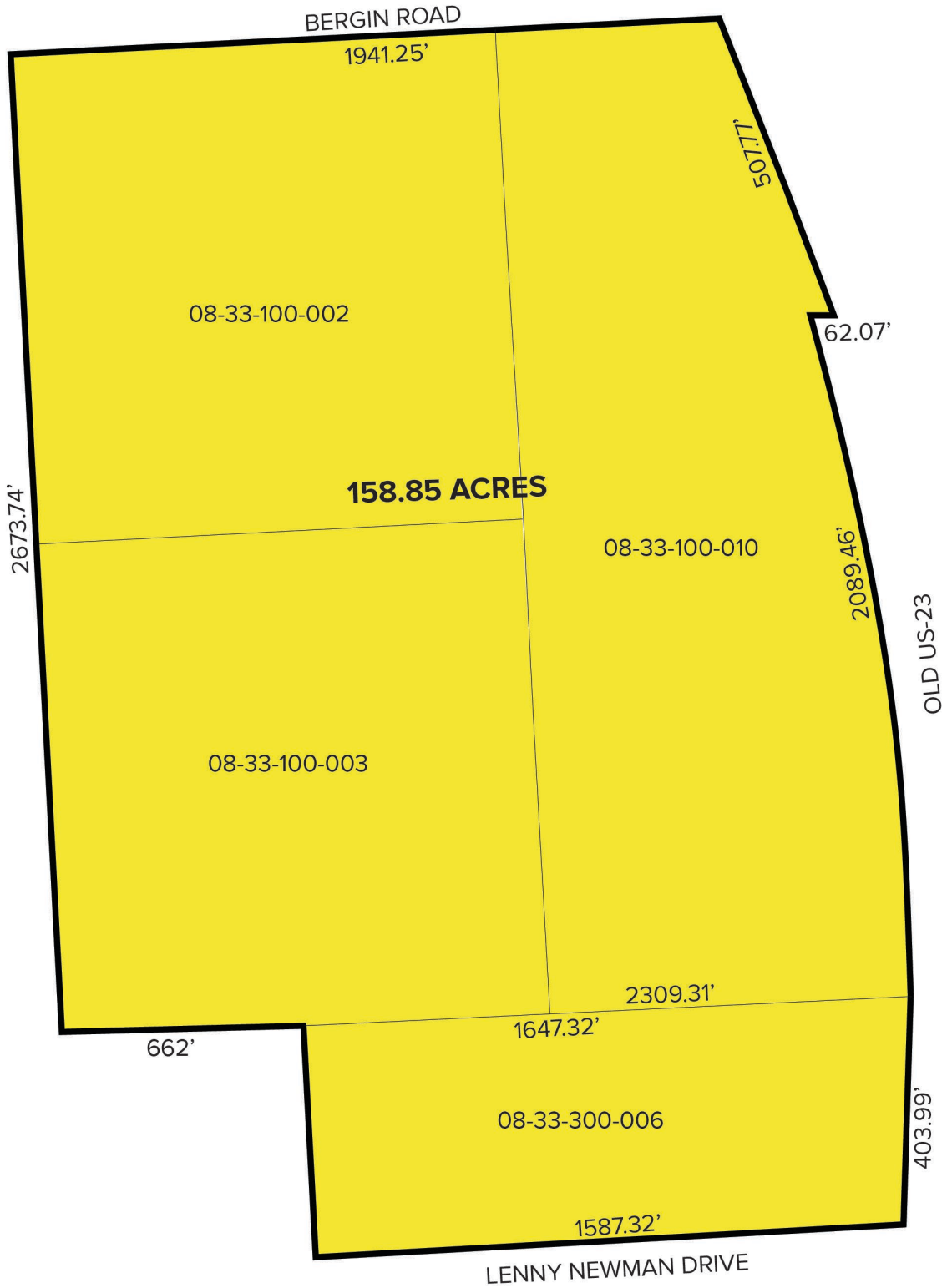
SIGNATURE ASSOCIATES
One Towne Square, Suite 1200
Southfield, MI 48076
www.signatureassociates.com

Old US-23 – Hartland Twp., Michigan

Land For Sale

158.85
Acres
AVAILABLE

Parcel Map



For more information, please contact:

JEFF LEMANSKI
(248) 359 0641
jlemanski@signatureassociates.com

STEVE GORDON
(248) 948 0101
sgordon@signatureassociates.com

SIGNATURE ASSOCIATES
One Towne Square, Suite 1200
Southfield, MI 48076
www.signatureassociates.com