

66,596 SF | 5.82 ACRES
AVAILABLE LIGHT INDUSTRIAL/WAREHOUSE
IN DEARBORN, MI

15200 N COMMERCE DRIVE
DEARBORN, MI 48120

NEWMARK

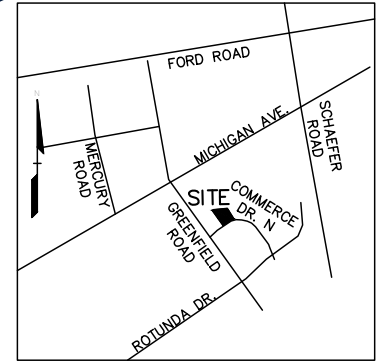
PROPERTY HIGHLIGHTS



66,596 SF
on 5.82 acres



Enclosed secured lot



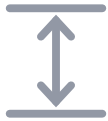
LOCATION MAP - NOT TO SCALE



5,876 SF office



365 parking spaces



21' clearance



1500 KVA
480/277 Volts



8 grade level doors
Ability to add up to 8+ docks

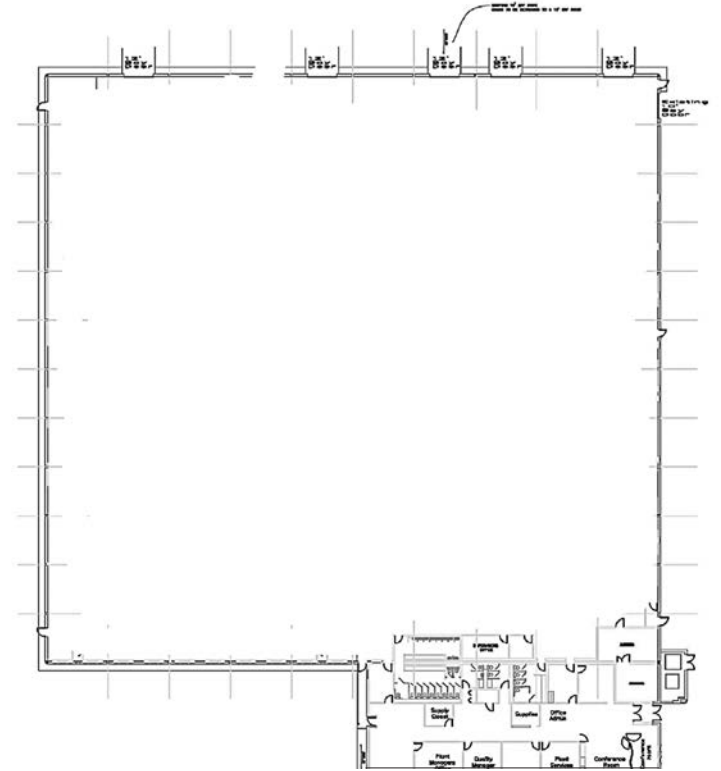


100% sprinklered



Close proximity to
I-94, M-39 and M-12

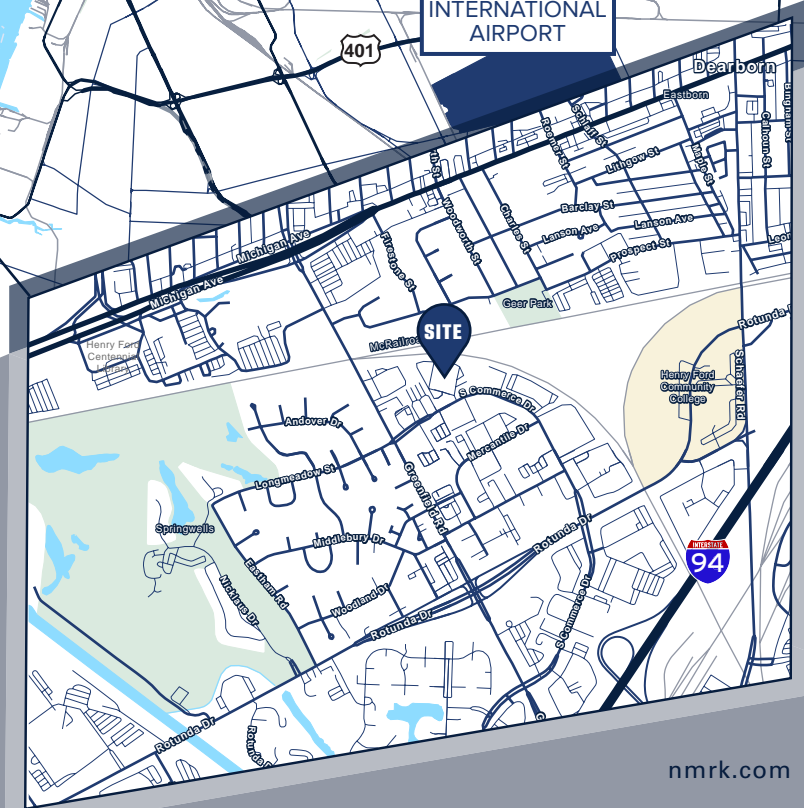
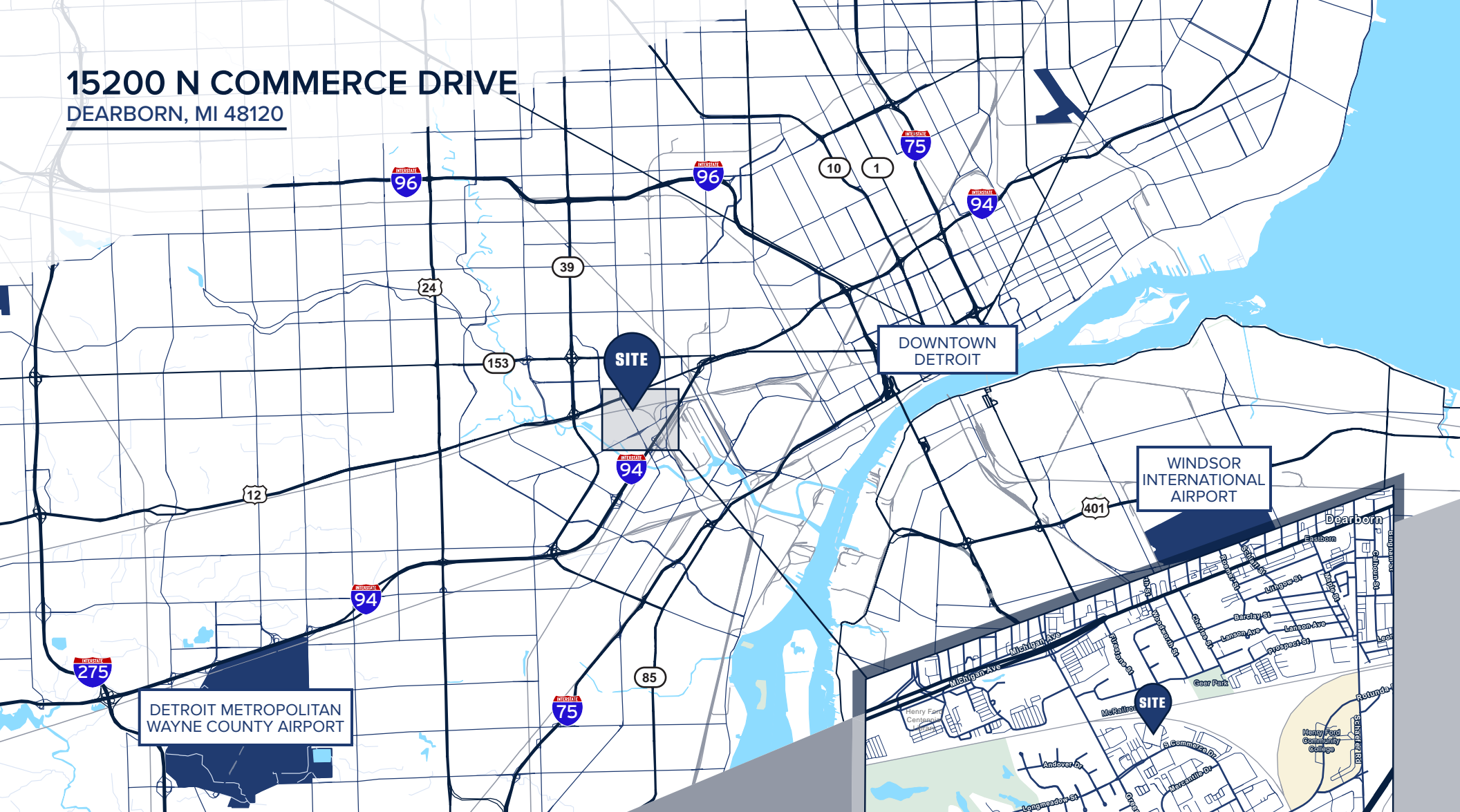




**UP TO 10
POTENTIAL TRUCKWELLS**

15200 N COMMERCE DRIVE

DEARBORN, MI 48120



For more information contact:

Tom Oldham
248-357-6595
Tom.Oldham@nrmk.com

Dan Labes
248-357-6578
Dan.Labes@nrmk.com

Morgan Katz
248-892-0283
Morgan.Katz@nrmk.com



nrmk.com

The information contained herein has been obtained from sources deemed reliable but has not been verified and no guarantee, warranty or representation, either express or implied, is made with respect to such information. Terms of sale or lease and availability are subject to change or withdrawal without notice.

Lease

15200 N Commerce Dr Dearborn, MI 48120-1202



Pricing Information:

Lease Rate Range:	\$6.50/sf
Lease Type:	NNN
Sale Price:	N/A
Price per SF:	N/A
Real Estate Taxes psf:	\$1.96
Building Insurance psf:	\$0.00
CAM psf:	N/A

Property Details:

Total Building Area:	66,596 sf	Parcel ID:	32-10-191-04-006
Min/Max Available:	66,596 sf	Parking Description:	365
Office Area:	6,360 sf	Rail Served:	Yes
Property Type:	Warehouse/Distribution	Cranes:	No
Tenancy:	Multi-tenant	Heat:	Roof-top
Year Built:	01/01/1972	Clear Height Min/Max:	21.0'
Year Renovated:	01/01/1992	Grade/Dock Doors:	8 / N/A
Zoning:	Lt. Ind.	Sprinkler:	Yes
Site/Parcel Area:	5.82 acres	Power:	NA

Comments:

Features 100% air conditioning. Fenced & secure lot. Product staging, security system & signage.

Thomas Oldham

248.357.6595

Tom.Oldham@nrmk.com

Dan Labes

248.357.6578

Dan.Labes@nrmk.com

Morgan Katz

248.871.2305

Morgan.Katz@nrmk.com

