



2429 N. Clark Street

CHICAGO, ILLINOIS

Retail Space for Lease

East block of Clark between Arlington & Fullerton

FOR MORE INFORMATION,
PLEASE CONTACT

MICHAEL WALLACE

mwallace@canvasrealestate.com

614.537.2403

DEMOGRAPHICS



77.5k+

Total Population
1 Mile

22.2k+ 8.83k+
0.5 Miles 0.25 Miles



\$183k+

Average HH Income
1 Mile

\$171k+ \$167k+
0.5 Miles 0.25 Miles



64.1k+

Daytime Population
1 Mile

15.9k+ 5.43k+
0.5 Miles 0.25 Miles

LAKEVIEW

- 3,015 SF retail space available in Lincoln Park
- 30' of frontage along the heavily trafficked N Clark Street
- Close proximity to Lincoln Park Zoo and scenic lakefront trails, this area draws both locals and tourists
- Within easy walking distance of the Fullerton CTA Stop (3.7 million annual riders)

NEIGHBORING RETAILERS

BIG APPLE

CAFECITO



DUNKIN'

EGG TUCK

FIRECAKES
CRAFT DONUTS

KALA
MODERN GREEK

new balance



Sultan's Market

TACO BELL



Walgreens



YOGA BOX

CANVAS

FLOOR PLAN

SPACE AVAILABLE



3,015 sf

Total

FRONTAGE



30 ft

on N. Clark

TRAFFIC



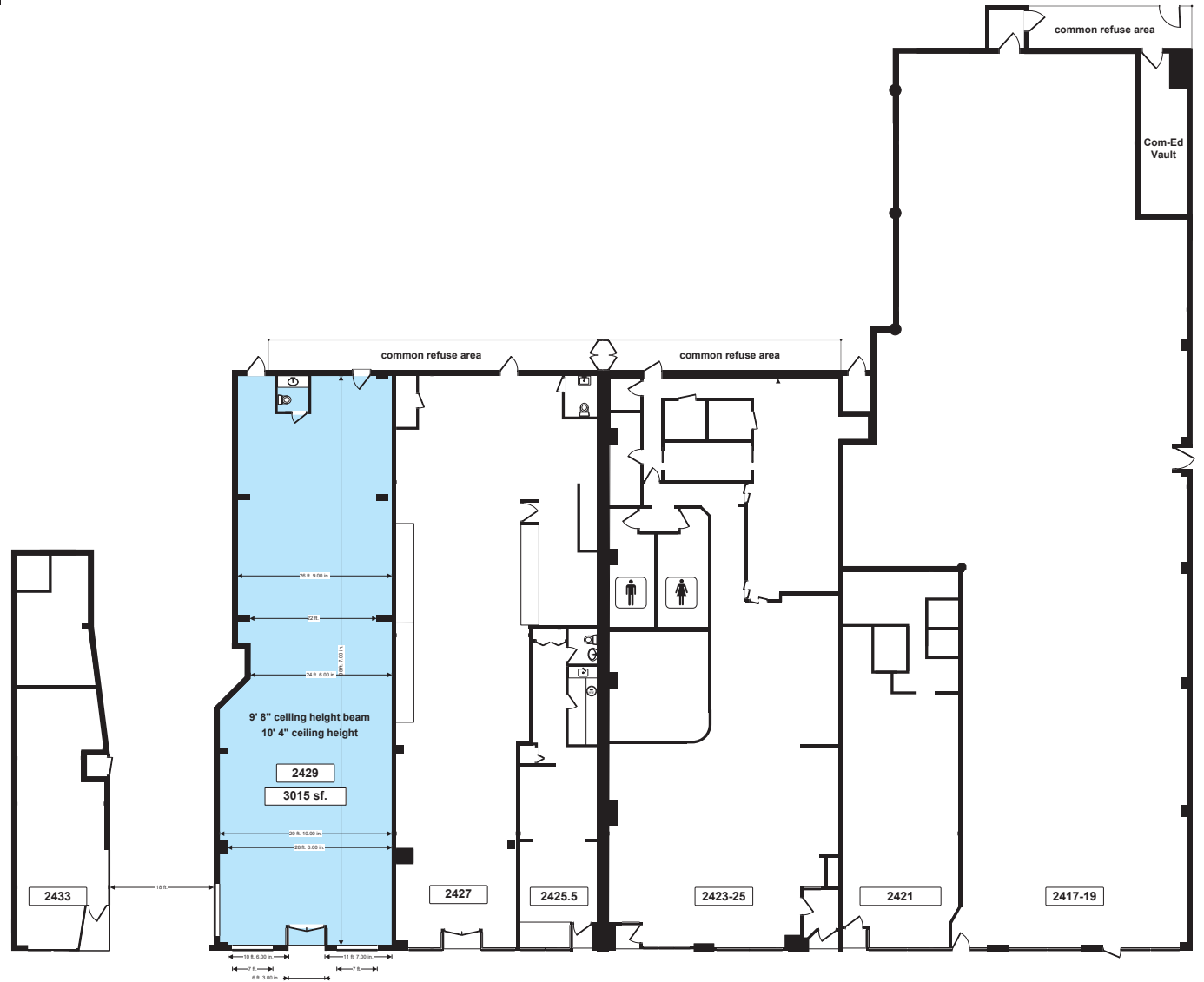
11,100 VPD

N. Clark



17,700 VPD

W. Fullerton



N. CLARK STREET

CANVAS



STREET MAP

2429 N. Clark Street
CHICAGO, ILLINOIS

SPACE FOR LEASE



FOR MORE INFORMATION,
PLEASE CONTACT

MICHAEL WALLACE
mwallace@canvasrealestate.com
614.537.2403

CANVAS

