



UNDER NEW OWNERSHIP

## Woodland Square Office Center

901 Biesterfield Road, Elk Grove Village, Illinois 60007

One Oakbrook Terrace  
Suite 400  
Oakbrook Terrace, Illinois 60181  
+1 630 932 1234

[hiffman.com](http://hiffman.com)

### PROPERTY HIGHLIGHTS

Under New Ownership!  
Prime location with synergistic medical services within the complex. Immediate access to I-290 and Route 53, this Medical Office Complex offers tenant signage, private entrances and is centrally located near other medical offices in the Elk Grove Village area.

### Contact

Jason Wurtz  
+1 630 693 0692  
[jwurtz@hiffman.com](mailto:jwurtz@hiffman.com)

Sarah Walker  
+1 630 389 8911  
[swalker@hiffman.com](mailto:swalker@hiffman.com)



1 MILE TO I-290, RTE  
53 & I-390



711 - 1,002 SF  
AVAILABLE



MINUTES AWAY FROM  
ABUNDANT AMENITIES &  
SHOPPING



20 MINUTES TO  
O'HARE AIRPORT



3 MINUTE WALK TO  
PACE BUS STOP



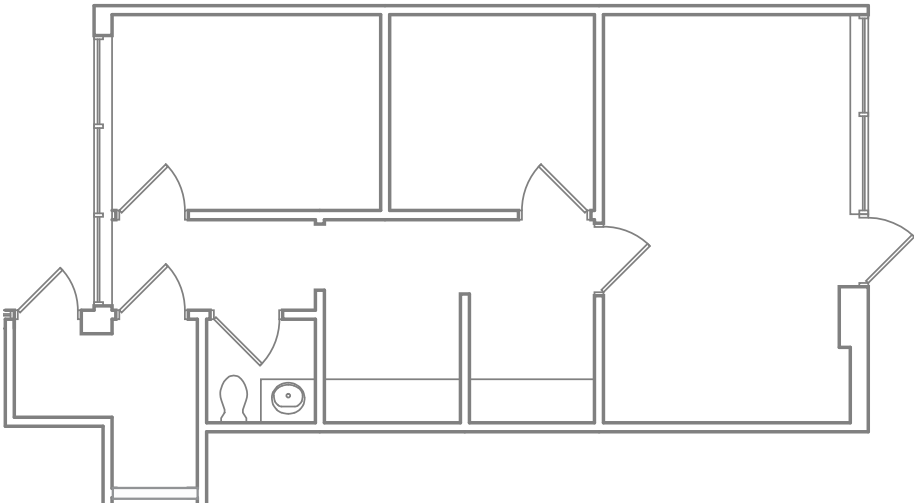
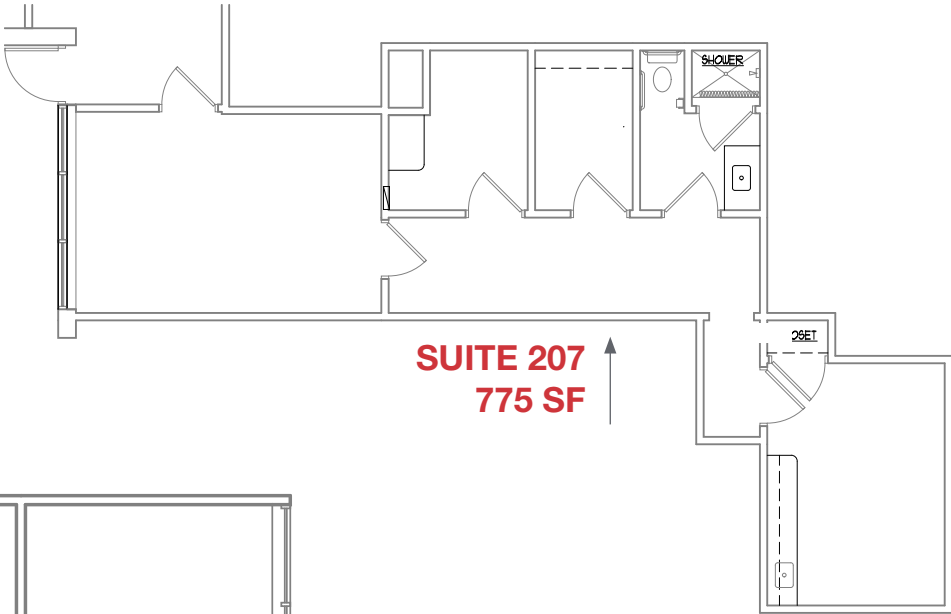
AMPLE & CONVENIENT  
PARKING

WOODLAND SQUARE OFFICE CENTER | FOR LEASE



SPACE AVAILABLE

Suite 214A	711 SF
Suite 207	775 SF

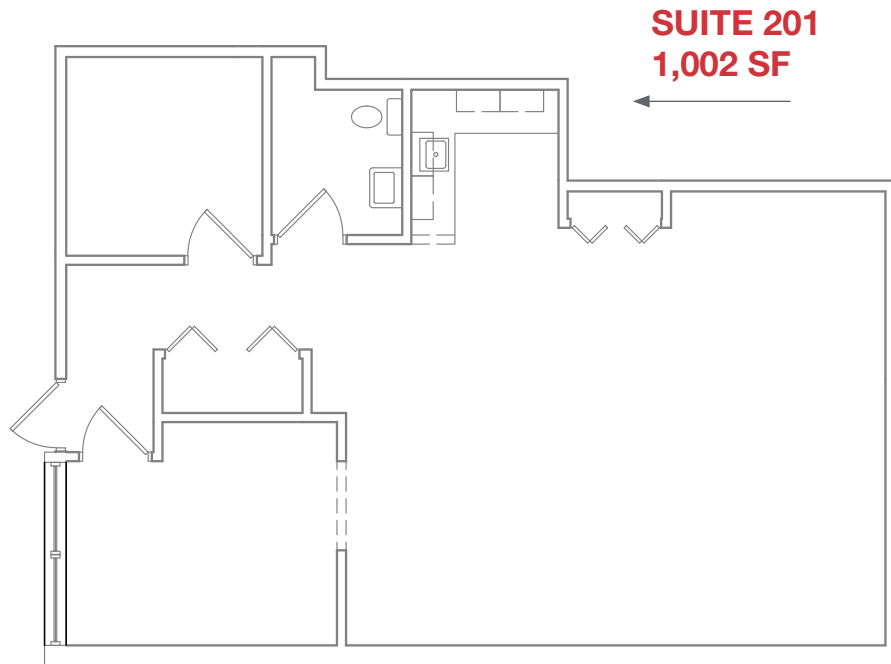




**SPACE AVAILABLE**

Suite 201

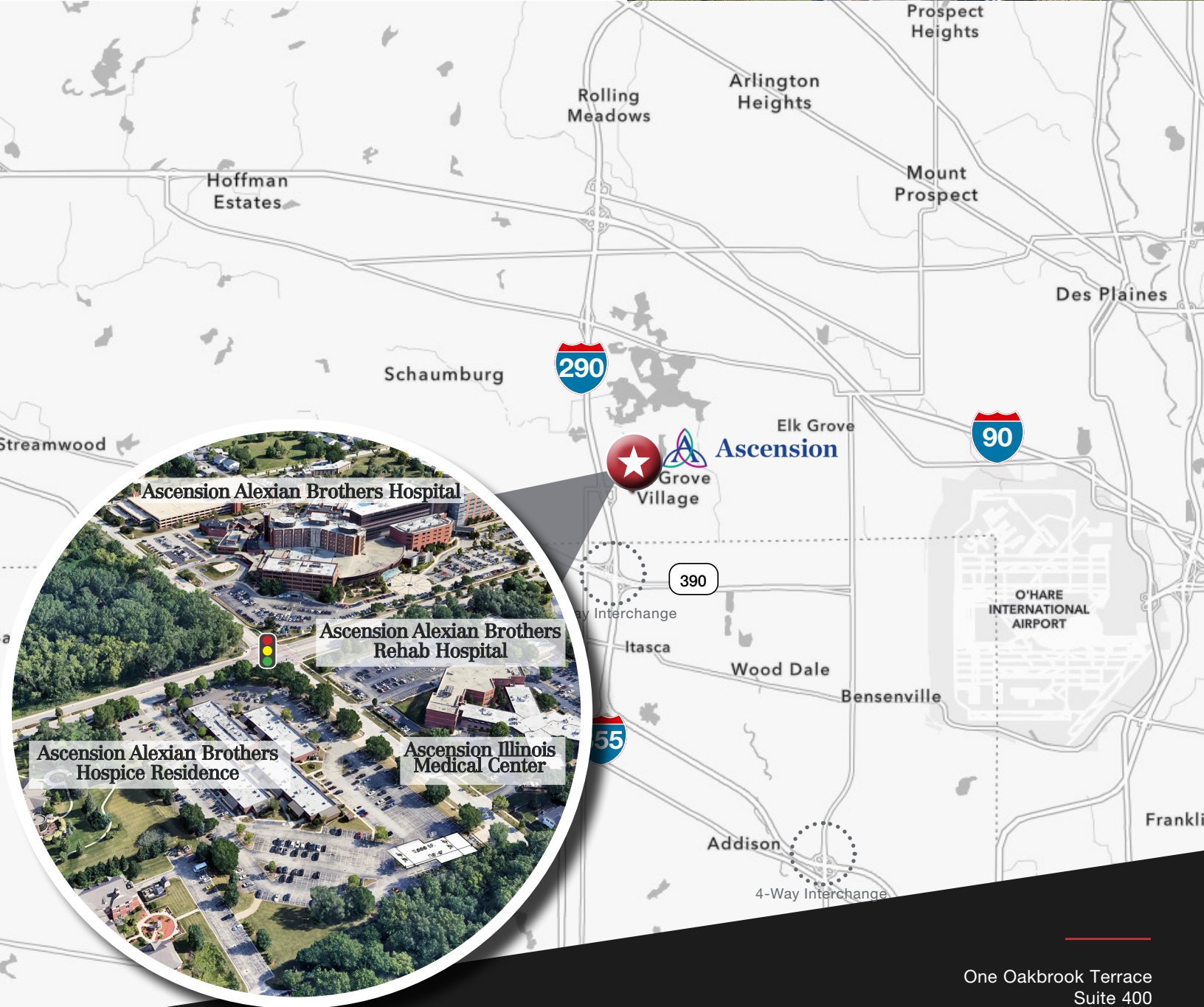
1,002 SF



WOODLAND SQUARE OFFICE CENTER | FOR LEASE

LOCATION, LOCATION, LOCATION

Immediate Access to the Areas' Best Amenities, Including Woodfield Mall, Incredible Restaurants, Hotels, Hospitals & Medical Centers



One Oakbrook Terrace  
Suite 400  
Oakbrook Terrace, Illinois 60181  
+1 630 932 1234