

23093 COMMERCE DRIVE

FARMINGTON HILLS
MICHIGAN

49,040 SF Available for Sublease



3800 Amps /
480 Volts
Power



ESFR Fire
Suppression



10 Ton & 3 Ton
Cranes
(Possibly Available)

NEWMARK

Tom Oldham
248-357-6595
tom.oldham@nmrk.com

Morgan Katz
248-892-0283
morgan.katz@nmrk.com

PROPERTY OVERVIEW

49,040 SF AVAILABLE FOR SUBLEASE

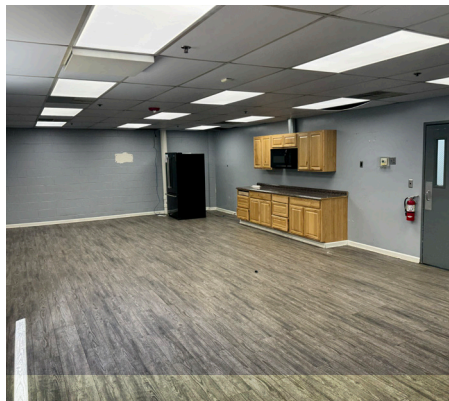
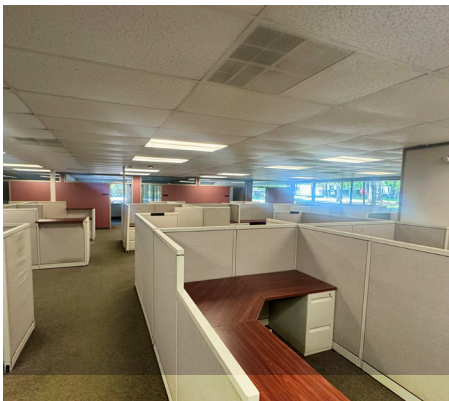
**6,000 SF
OFFICE**

**43,040 SF
WAREHOUSE**

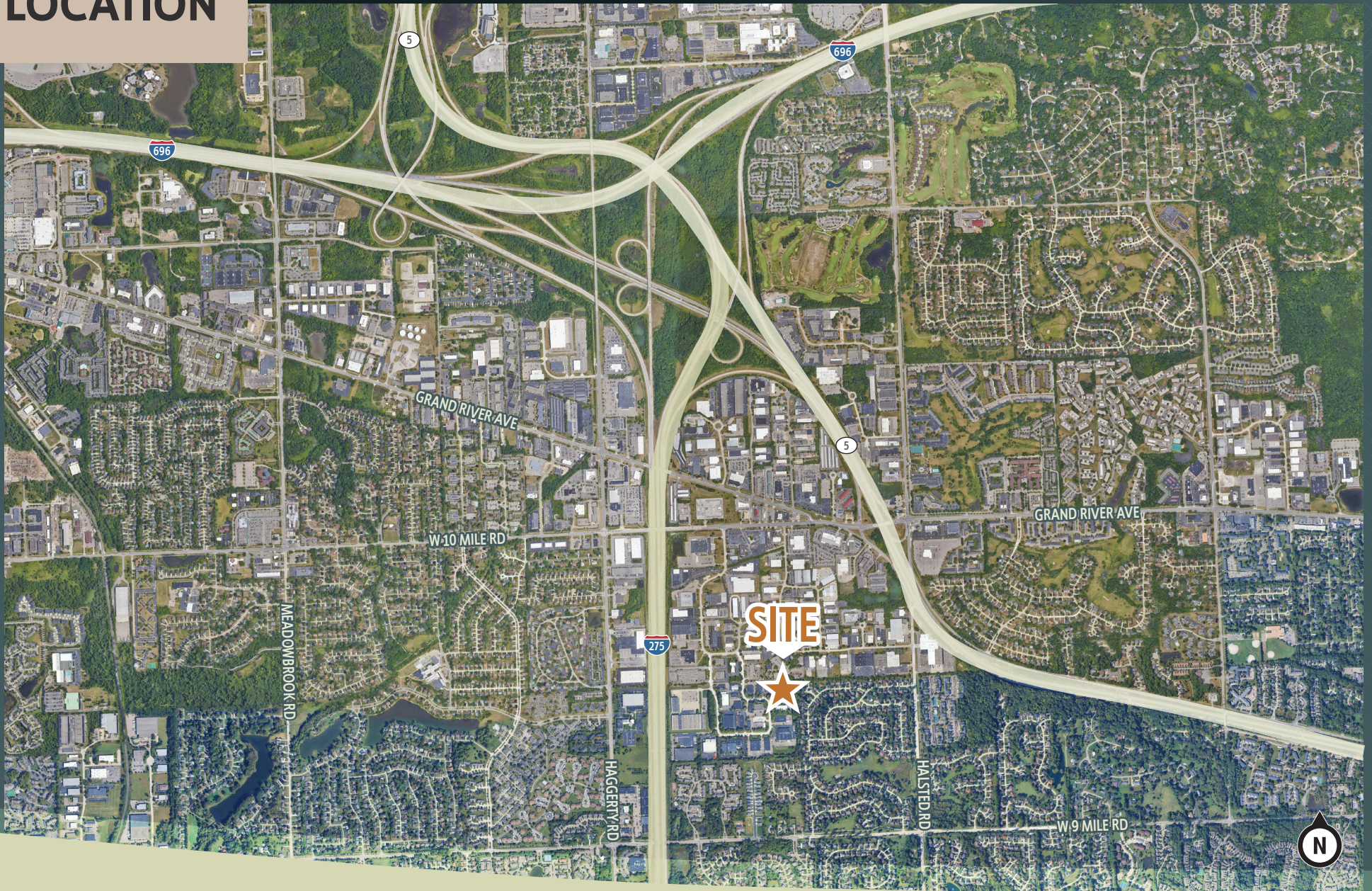
**3.7
ACRES**

DETAILS:

- 22' clear ceiling height
- 1 grade level overhead door (12x14)
- 3 interior docks
- One 10-ton crane and one 3-ton crane (possibly available)
- 3800 amps, 3 Phase, 240/480 volt power
- ESFR Fire Suppression
- Outside storage capabilities
- Shop locker rooms
- Sublease through 12/31/2029
- Direct lease available



LOCATION



NEWMARK

The information contained herein has been obtained from sources deemed reliable but has not been verified and no guarantee, warranty or representation, either express or implied, is made with respect to such information. Terms of sale or lease and availability are subject to change or withdrawal without notice.

Tom Oldham
248-357-6595
tom.oldham@nmrk.com

Morgan Katz
248-892-0283
morgan.katz@nmrk.com

Sublease

23093 Commerce Dr Farmington Hills, MI 48335



Pricing Information:

Lease Rate Range:	\$7.95-\$7.95
Lease Type:	NNN NNN
Sale Price:	N/A
Price per SF:	N/A
Real Estate Taxes psf:	\$0.00
Building Insurance psf:	\$0.00
CAM psf:	N/A

Property Details:

Total Building Area:	49,040 sf
Min/Max Available:	49,040 sf
Office Area:	6,000 sf
Property Type:	General Industrial
Tenancy:	Single-tenant
Year Built:	01/01/1983
Year Renovated:	
Zoning:	
Site/Parcel Area:	3.76 acres

Parcel ID:	
Parking Description:	
Rail Served:	No
Cranes:	Yes
Heat:	N/A
Clear Height Min/Max:	22.0'
Grade/Dock Doors:	1 / 3
Sprinkler:	Yes
Power:	3,800 amps, 480 volt

Comments:

One 10-ton crane and one 3-ton crane (possibly available). 3800 amps, 3 Phase, 240/480 volt power. ESFR Fire Suppression. Outside storage capabilities. Shop locker rooms. Sublease through 12/31/2029. Direct lease available.

Thomas Oldham

248.357.6595

Tom.Oldham@nrmk.com

Morgan Katz

248.871.2305

Morgan.Katz@nrmk.com

