

FOR LEASE

HUDSON

MARDA LOOP

3360 16TH ST SW



Anastasiya Gryshchenko
Vice President
403 888 1748
anastasiya.gry@kpliglobal.com

Estelle Tran
Managing Director
403 993 2898
estelle.tran@kpliglobal.com

KPLI
GLOBAL

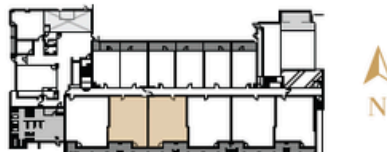
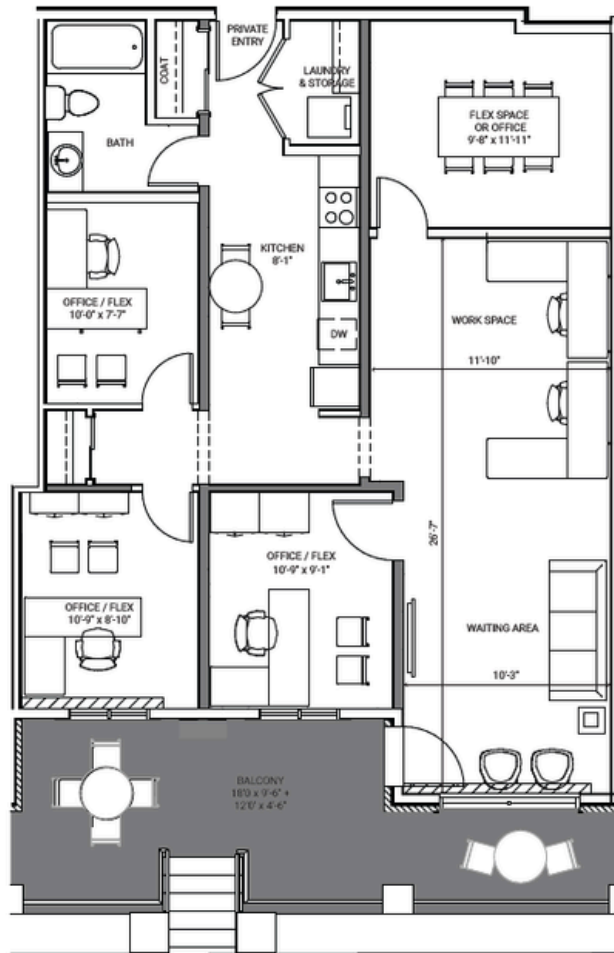
SUITE 109

3 OFFICE + 1 FLEX, 1 BATH

1,103 SF

Walk-up "WORKSPACE"
with 226 SF of balcony living area.

VIRTUAL TOUR >



SUITE 109

3 OFFICE + 1 FLEX, 1 BATH



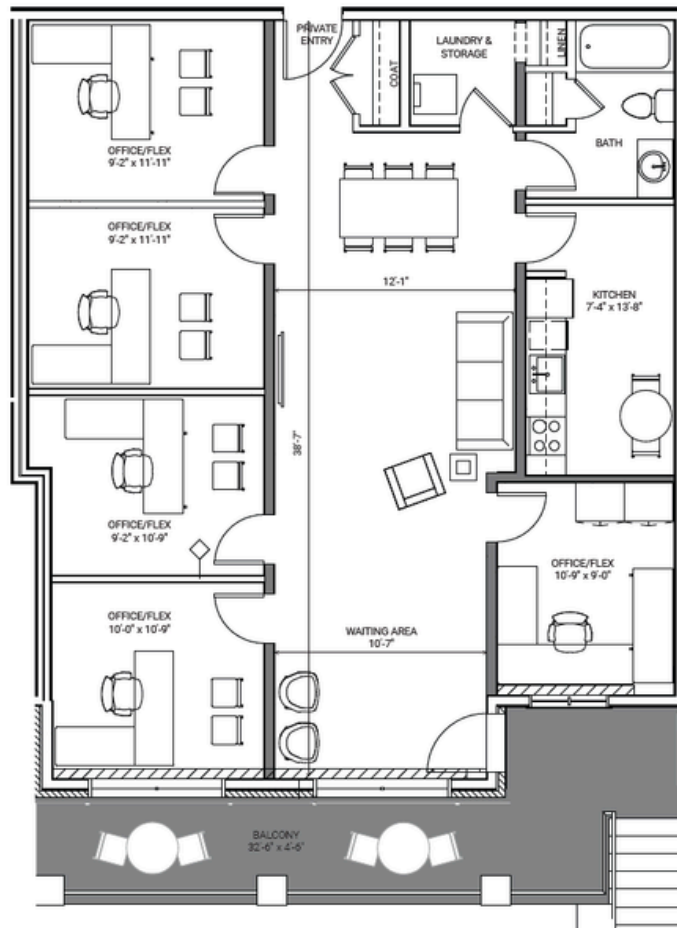
SUITE 111

5 OFFICE / FLEX, 1 BATH

1,103 SF

Walk-up "WORKSPACE"
with 226 SF of balcony living area.

VIRTUAL TOUR >



SUITE 111

5 OFFICE / FLEX, 1 BATH



AMENITIES



FITNESS FACILITY



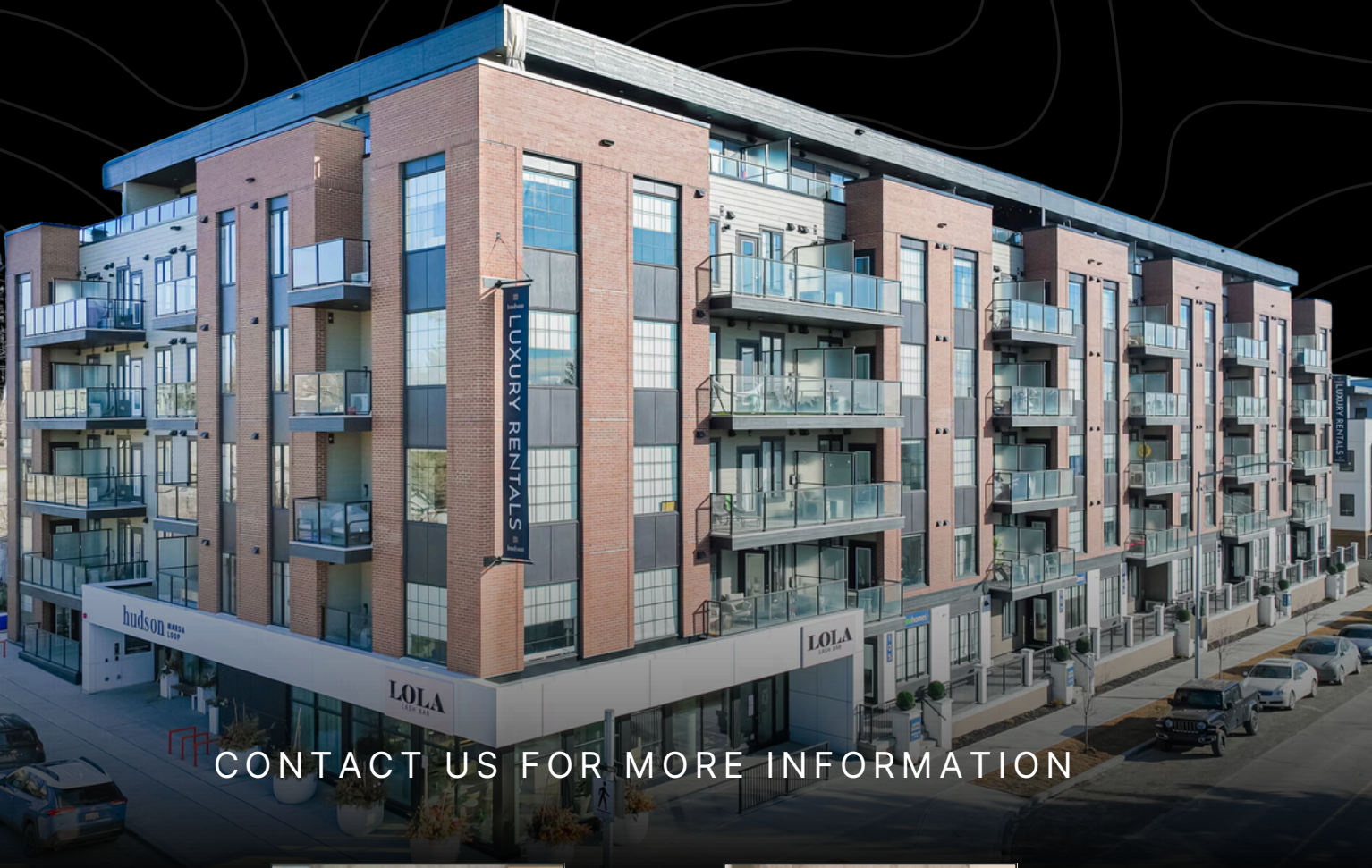
SOCIAL LOUNGE



PET SPA



COURTYARD



CONTACT US FOR MORE INFORMATION



Anastasiya Gryshchenko

Vice President

403 888 1748

anastasiya.gry@kpliglobal.com



Estelle Tran

Managing Director

403 993 2898

estelle.tran@kpliglobal.com