

# CedarJuanitaBuilding

9925 NE 134th Ct, Kirkland, WA



850 RSF Available Immediately

\$24.71/RSF, Full Service

**Leibsohn  
& Company** 



**DAN KREKEL** CCIM  
Senior Vice President  
+1 425 586 4655  
[dkrekel@leibsohn.com](mailto:dkrekel@leibsohn.com)




**MAXTON MACLACHLAN**  
Associate Vice President  
+1 425 586 4659  
[mmaclachlan@leibsohn.com](mailto:mmaclachlan@leibsohn.com)

# CedarJuanitaBuilding

9925 NE 134th Ct, Kirkland, WA

## Property Highlights



- » 4 Designated Parking Stalls
- » Approx. 1 Mile from I-405
- » Nearby shopping centers, restaurants, and retail stores
- » Abundance of Natural Light
- » Ability to add more plumbing in the offices
- »  Available

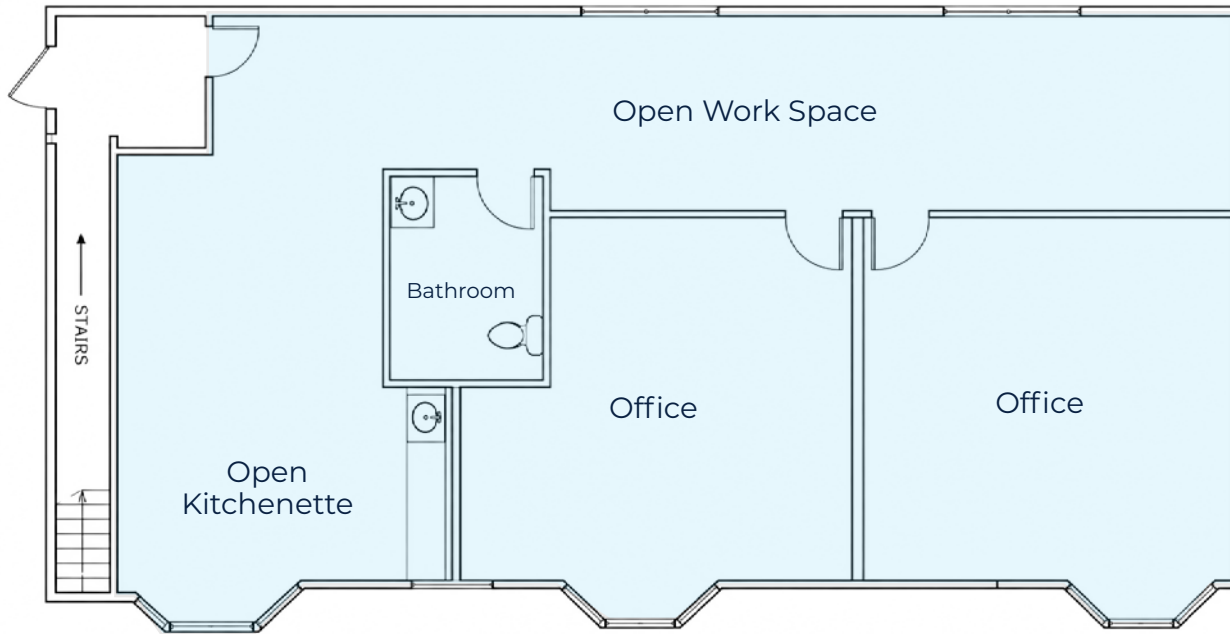


# CedarJuanitaBuilding

9925 NE 134th Ct, Kirkland, WA

## 2NDFLOOR | 850RSF

- Available Immediately
- \$1,750.00 per month, Full Service
- \$24.71/RSF, Full Service



# CedarJuanitaBuilding

9925 NE 134th Ct, Kirkland, WA

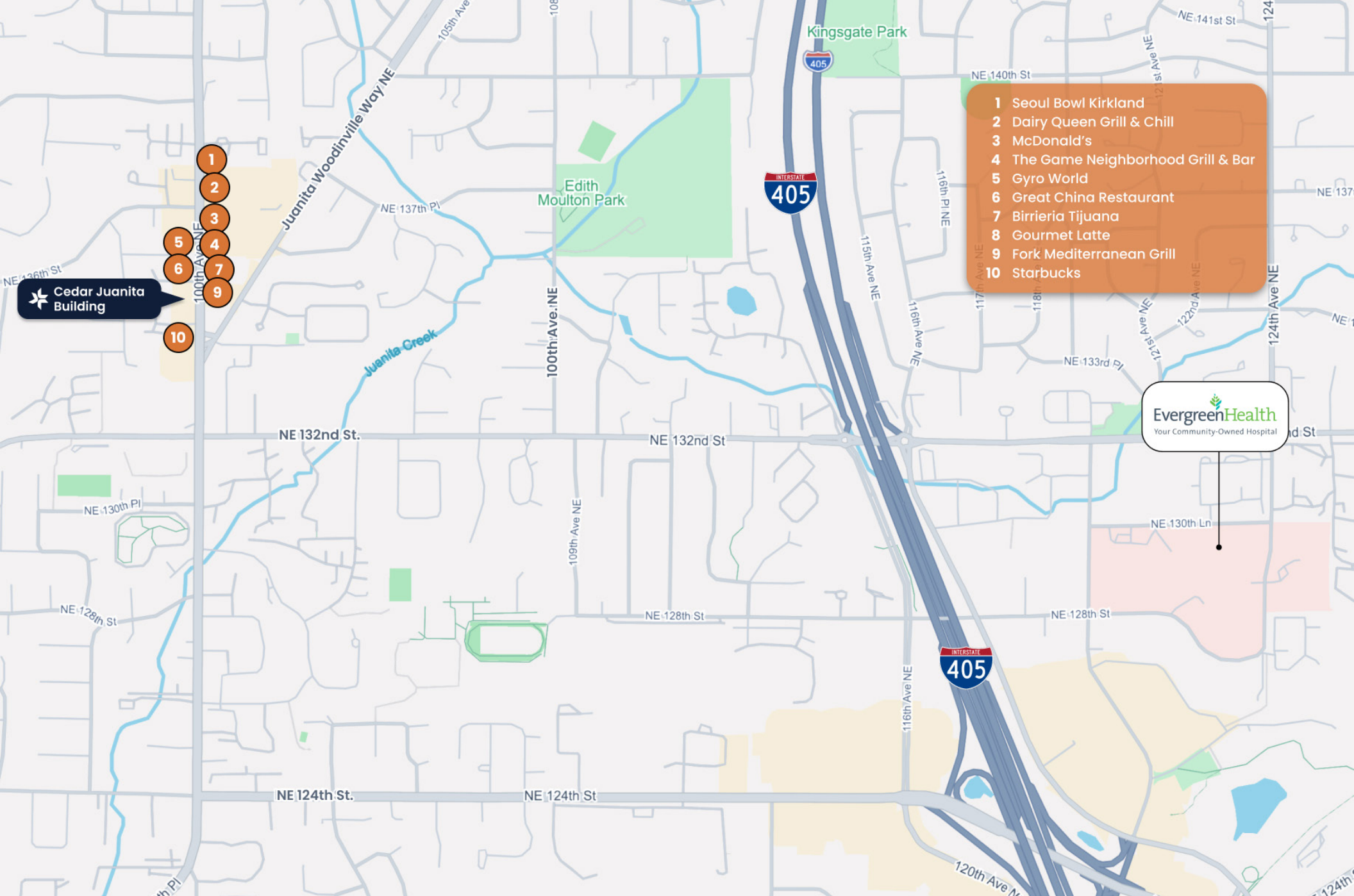


Open Work Space



Open Kitchenette





# CedarJuanitaBuilding

9925 NE 134th Ct, Kirkland, WA 98033

THE INFORMATION CONTAINED HEREIN HAS BEEN RECEIVED FROM SOURCES WE DEEM RELIABLE. WHILE WE HAVE NO REASON TO DOUBT ITS ACCURACY, WE DO NOT GUARANTEE IT. YOU ARE ADVISED TO INDEPENDENTLY VERIFY ALL INFORMATION. Leibsohn & Company 2026



**DAN KREKEL** CCIM  
Senior Vice President  
+1 425 586 4655  
[dkrekel@leibsohn.com](mailto:dkrekel@leibsohn.com)



**MAXTON MACLACHLAN**  
Associate Vice President  
+1 425 586 4659  
[mmaclachlan@leibsohn.com](mailto:mmaclachlan@leibsohn.com)