



Bridgeville Town Center

SUSSEX HIGHWAY (RT. 13), BRIDGEVILLE, DELAWARE

Leasing Inquiries Call:

Jim Tancredi
C: 302-222-7574
O: 302-414-1000
jtancredi@LMTCRE.com

Joe Latina, SIOR
C: 302-530-1233
O: 302-414-1000
jlatina@LMTCRE.com

Tyler Foresta
C: 302-584-8615
O: 302-414-1000
tforesta@LMTCRE.com

Broker Representative:

LMT Commercial Real Estate Services
1117 N Franklin Street, Suite A
Wilmington, DE 19806
LMTCRE.com



Bridgeville Retail Destination Coming Soon!

**Coming Soon! A New Retail Destination at the Heart of Sussex County
Bridgeville, Delaware | Route 13 & Route 404**

Be among the first to join Bridgeville's newest retail development, coming soon to the high-traffic crossroads of Route 13 and Route 404, a prime location connecting travelers, commuters, and local residents.

With flexible space configurations and excellent frontage, this ground-up project will feature pad sites with drive-thru potential and inline retail space – perfect for restaurants, service retailers, and national brands looking to expand in one of western Sussex County's fastest-growing markets.

- Now Pre-Leasing – pad sites & inline shop space
- High-visibility corner with year-round traffic flow
- Ideal for restaurants, service retail, medical, or quick-serve
- Located at a signalized intersection with easy access
- Surrounded by national brands and residential growth

With construction underway, now is the time to secure your spot and shape the future of this destination retail center.



Leasing Inquiries Call:

Jim Tancredi
C: 302-222-7574
O: 302-414-1000
jtancredi@LMTCRE.com

Joe Latina, SIOR
C: 302-530-1233
O: 302-414-1000
jlatina@LMTCRE.com

Tyler Foresta
C: 302-584-8615
O: 302-414-1000
tforesta@LMTCRE.com

Broker Representative:

LMT Commercial Real Estate Services
1117 N Franklin Street, Suite A
Wilmington, DE 19806
LMTCRE.com





Overall Plan

Leasing Inquiries Call:

Jim Tancredi
C: 302-222-7574
O: 302-414-1000
jtancredi@LMTCRE.com

Joe Latina, SIOR
C: 302-530-1233
O: 302-414-1000
jlatina@LMTCRE.com

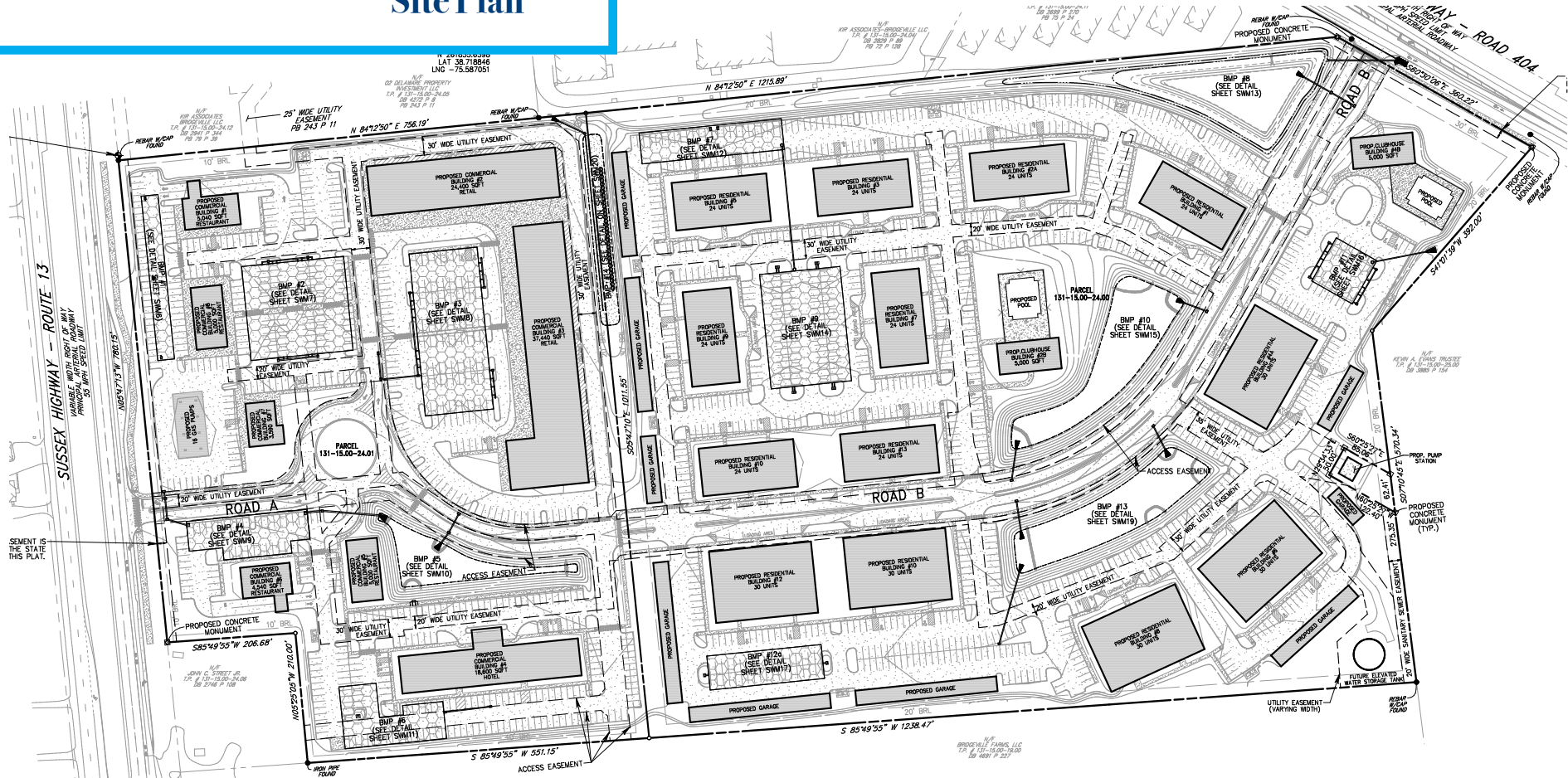
Tyler Foresta
C: 302-584-8615
O: 302-414-1000
tforesta@LMTCRE.com

Broker Representative:

LMT Commercial Real Estate Services
1117 N Franklin Street, Suite A
Wilmington, DE 19806
LMTCRE.com



Site Plan



Leasing Inquiries Call:

Jim Tancredi
C: 302-222-7574
O: 302-414-1000
jtancredi@LMTCRE.com

Joe Latina, SIOR
C: 302-530-1233
O: 302-414-1000
jlatina@LMTCRE.com

Tyler Foresta
C: 302-584-8615
O: 302-414-1000
tforesta@LMTCRE.com

Broker Representative:

LMT Commercial Real Estate Services
1117 N Franklin Street, Suite A
Wilmington, DE 19806
LMTCRE.com





Regional Area

SEAFORD, DE
6.8 miles / 13 min.

GEORGETOWN, DE
6 miles / 17 min.

MILFORD, DE
18 miles / 26 min.

**REHOBOTH
BEACH, DE**
30.6 miles / 52 min.

BETHANY, DE
35.3 miles / 53 min.

SALISBURY, MD
26.6 miles / 41 min.

Leasing Inquiries Call:

Jim Tancredi
C: 302-222-7574
O: 302-414-1000
jtancredi@LMTCRE.com

Joe Latina, SIOR
C: 302-530-1233
O: 302-414-1000
jlatina@LMTCRE.com

Tyler Foresta
C: 302-584-8615
O: 302-414-1000
tforesta@LMTCRE.com

Broker Representative:

LMT Commercial Real Estate Services
1117 N Franklin Street, Suite A
Wilmington, DE 19806
LMTCRE.com



Local Trade Area



Leasing Inquiries Call:

Jim Tancredi
C: 302-222-7574
O: 302-414-1000
jtancredi@LMTCRE.com

Joe Latina, SIOR
C: 302-530-1233
O: 302-414-1000
jlatina@LMTCRE.com

Tyler Foresta
C: 302-584-8615
O: 302-414-1000
tforesta@LMTCRE.com

Broker Representative:

LMT Commercial Real Estate Services
1117 N Franklin Street, Suite A
Wilmington, DE 19806
LMTCRE.com



Population	1-Mile	3-Mile	5-Mile
2025 Population	1,009	7,694	10,351
2030 Population	1,152	8,472	11,063

Median Age	1-Mile	3-Mile	5-Mile
2025 Median	65.1	40.5	42.1
2030 Median	69.0	40.6	42.1

Households	1-Mile	3-Mile	5-Mile
2025 Households	535	2,822	4,043
2030 Households	623	3,148	4,360

Median Household Income	1-Mile	3-Mile	5-Mile
2025 Median Household Income	\$66,914	\$57,455	\$63,891
2030 Median Household Income	\$73,653	\$64,978	\$72,754

Per Capita Income	1-Mile	3-Mile	5-Mile
2025 Per Capita Income	\$45,892	\$30,813	\$32,981
2030 Per Capita Income	\$48,708	\$33,847	\$36,255

Radius Demographics

1
MILE

2025
Median Net Worth **\$502,429**
Average Net Worth **\$1,966,076**

3
MILE

2025
Median Net Worth **\$215,366**
Average Net Worth **\$862,236**

5
MILE

2025
Median Net Worth **\$187,243**
Average Net Worth **\$874,670**

Leasing Inquiries Call:

Jim Tancredi
C: 302-222-7574
O: 302-414-1000
jtancredi@LMTCRE.com

Joe Latina, SIOR
C: 302-530-1233
O: 302-414-1000
jlatina@LMTCRE.com

Tyler Foresta
C: 302-584-8615
O: 302-414-1000
tforesta@LMTCRE.com

Broker Representative:

LMT Commercial Real Estate Services
1117 N Franklin Street, Suite A
Wilmington, DE 19806
LMTCRE.com



Drive-Time Demographics

**5
MINS**

2025
Median Net Worth **\$157,197**
Average Net Worth **\$690,539**

**10
MINS**

2025
Median Net Worth **\$255,411**
Average Net Worth **\$1,031,297**

**15
MINS**

2025
Median Net Worth **\$212,982**
Average Net Worth **\$921,912**

Population

	5-Mins	10-Mins	15-Mins
2025 Population	753	10,519	32,564
2030 Population	841	11,550	35,074

Median Age

	5-Mins	10-Mins	15-Mins
2025 Median	36.0	41.7	41.1
2030 Median	35.8	43.3	41.7

Households

	5-Mins	10-Mins	15-Mins
2025 Households	276	4,060	12,426
2030 Households	311	4,525	13,532

Median Household Income

	5-Mins	10-Mins	15-Mins
2025 Median Household Income	\$53,413	\$62,170	\$65,489
2030 Median Household Income	\$60,218	\$69,429	\$74,620

Per Capita Income

	5-Mins	10-Mins	15-Mins
2025 Per Capita Income	\$31,753	\$33,144	\$32,802
2030 Per Capita Income	\$35,220	\$36,128	\$35,786

Leasing Inquiries Call:

Jim Tancredi
C: 302-222-7574
O: 302-414-1000
jtancredi@LMTCRE.com

Joe Latina, SIOR
C: 302-530-1233
O: 302-414-1000
jlatina@LMTCRE.com

Tyler Foresta
C: 302-584-8615
O: 302-414-1000
tforesta@LMTCRE.com

Broker Representative:

LMT Commercial Real Estate Services
1117 N Franklin Street, Suite A
Wilmington, DE 19806
LMTCRE.com



Meet the LMT Team



Jim Tancredi
Principal

O: 302-414-1000 | C: 302-222-7574
jtancredi@LMTCRE.com



Joe Latina, SIOR
Managing Principal

O: 302-414-1000 | C: 302-530-1233
jlatina@LMTCRE.com



Tyler Foresta
Sales & Leasing

O: 302-414-1000 | C: 302-584-8615
tforesta@LMTCRE.com

Leasing Inquiries Call:

Jim Tancredi
C: 302-222-7574
O: 302-414-1000
jtancredi@LMTCRE.com

Joe Latina, SIOR
C: 302-530-1233
O: 302-414-1000
jlatina@LMTCRE.com

Tyler Foresta
C: 302-584-8615
O: 302-414-1000
tforesta@LMTCRE.com

Broker Representative:

LMT Commercial Real Estate Services
1117 N Franklin Street, Suite A
Wilmington, DE 19806
LMTCRE.com

