

FOR LEASE

CAVALIER INDUSTRIAL PARK

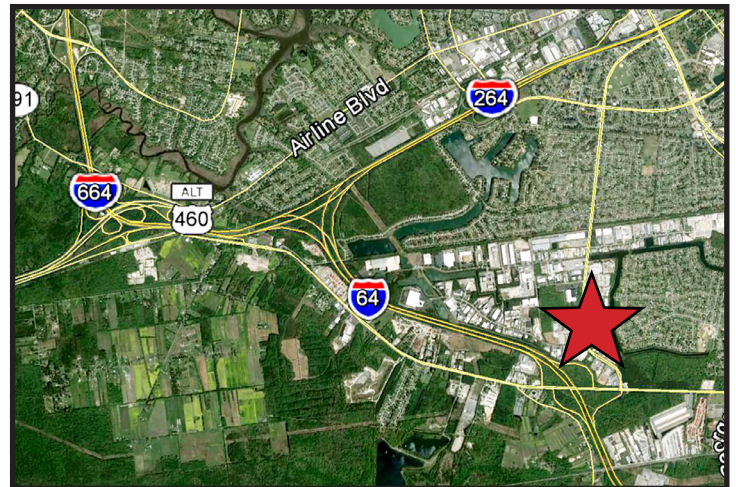
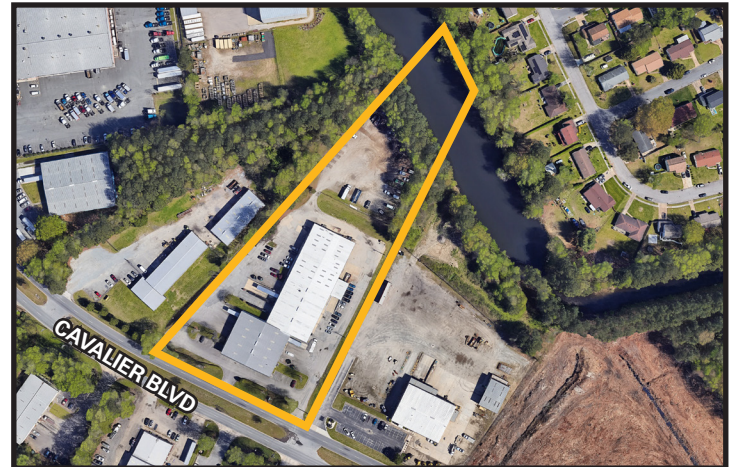
Industrial

925-A Cavalier Boulevard Chesapeake, VA



± 12,000 Sq. Ft. With Yard

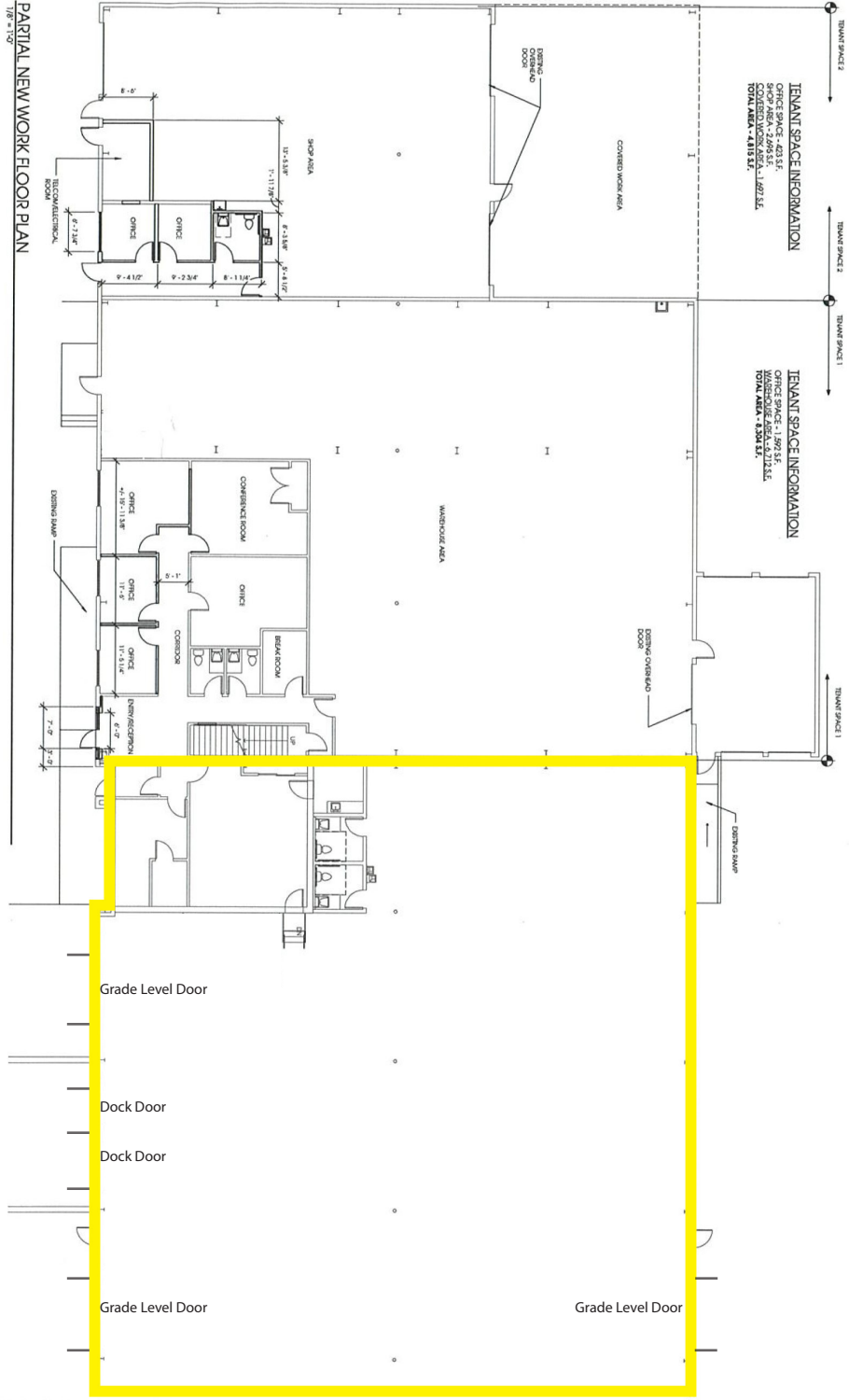
- Location:** 925 A Cavalier Blvd
Chesapeake, Virginia 23323
- Unit Size:** Total.....±12,000 sq. ft.
Warehouse.....±11,000 sq. ft.
Office.....±1,000 sq. ft.
- Land Area:** 5.26 acres (shared with other tenants)
- Zoning:** M-1 (Light Industrial)
- Electrical Service:** 3 Phase, 200 Amp, 120/208 Volt
- Loading Doors:** Two - 8'x9' 48" Dock Doors (with load levelers and dock seals)
Two - 14'x14' Grade Level Doors (drive through bay)
One - 12'x14' Grade Level Door
- Ceiling Height:** 18'-20'
- Lighting:** LED
- Floor:** 6" Reinforced Concrete
- Misc:** -Fenced Storage
-Outside Lighting
-Skylights in Warehouse Area
-City Water and Sewage
-2 Restrooms
-Natural gas heat in warehouse
-Ample Light
-Kitchen Area with Sink and Counter
-Excellent access to I-64, I-264, I-664, I-464, Rt. 58 and Military Highway



For more information:
CHARLES L. DICKINSON, SIOR
757.640.9468
CharlesDickinson@HarveyLindsay.com

999 Waterside Drive • Suite 1400
Norfolk, Virginia 23510
757-640-8700
www.HarveyLindsay.com

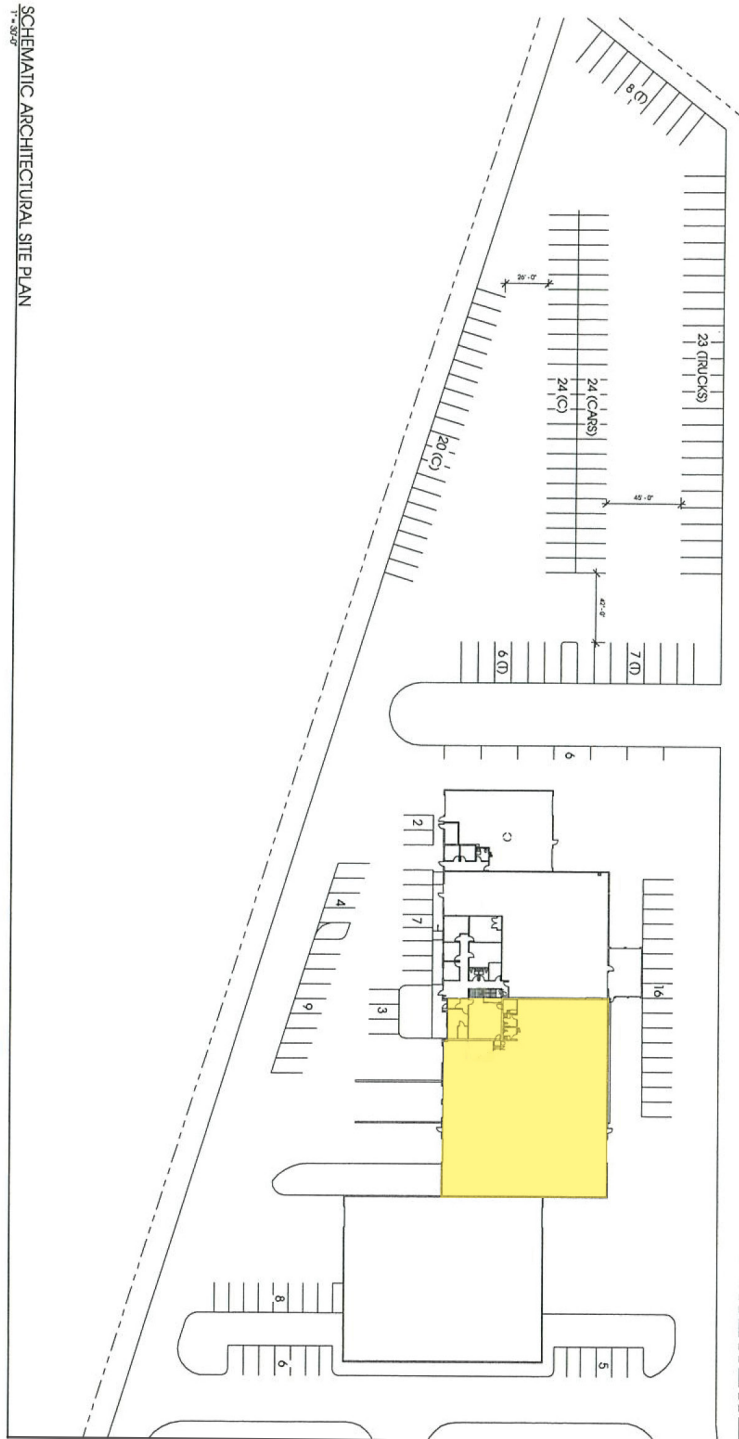
HARVEY LINDSAY
COMMERCIAL REAL ESTATE



For more information:
CHARLES L. DICKINSON, SIOR
 757.640.9468
CharlesDickinson@HarveyLindsay.com

999 Waterside Drive • Suite 1400
 Norfolk, Virginia 23510
 757-640-8700
www.HarveyLindsay.com

HARVEY LINDSAY
 COMMERCIAL REAL ESTATE



For more information:
CHARLES L. DICKINSON, SIOR
757.640.9468
CharlesDickinson@HarveyLindsay.com

999 Waterside Drive • Suite 1400
Norfolk, Virginia 23510
757-640-8700
www.HarveyLindsay.com

HARVEY LINDSAY
COMMERCIAL REAL ESTATE

925-A Cavalier Boulevard, Chesapeake, VA

DRIVING DISTANCES



APPROXIMATE DISTANCES

Virginia International Gateway	± 9.9 Miles
Norfolk International Terminal	± 12.9 Miles
Portsmouth Marine Terminal	± 8.2 Miles
Newport News Marine Terminal	± 20.1 Miles
Richmond Marine Terminal	± 103 Miles
I-64	± 2.5 Miles
I-95	± 68.1 Miles
I-64, I-664, I-264 Interchange	± 6.4 Miles
US 460	± 11.3 Miles
I-464	± 16.2 Miles
I-295	± 61.5 Miles

Richmond	± 98.6 Miles
Norfolk Naval Shipyard	± 7.4 Miles
Norfolk Naval Base	± 26.4 Miles
Newport News Shipbuilding	± 20.5 Miles
Langley Air Force Base	± 31.9 Miles
NASA Langley Research Center	± 29.2 Miles
Norfolk International Airport	± 20 Miles
NN International Airport	± 34.6 Miles
Richmond International Airport	± 92.6 Miles
Little Creek - Joint Exp. Base	± 21.6 Miles
Oceana Naval Air Station	± 28.3 Miles

For more information:

CHARLES L. DICKINSON, SIOR

757.640.9468

CharlesDickinson@HarveyLindsay.com

999 Waterside Drive • Suite 1400

Norfolk, Virginia 23510

757-640-8700

www.HarveyLindsay.com

HARVEY LINDSAY

COMMERCIAL REAL ESTATE