



3,300 SF AVAILABLE

2500 Park Central Blvd
Suite B6
DECATUR, GA 30035

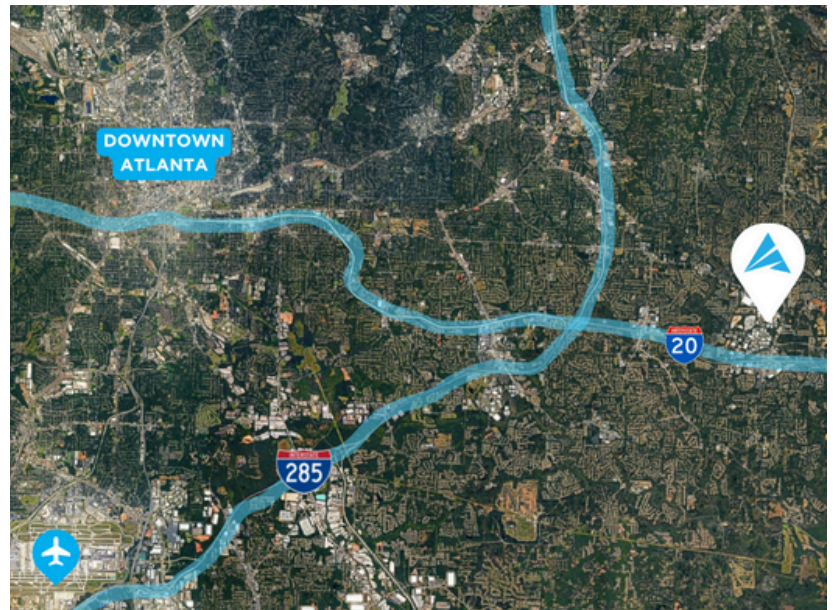


FOR LEASE



PROPERTY INFORMATION

Total Size: 3,300 SF
Office: 2,237 SF
Warehouse: 1,063 SF
Loading: One (1) Dock High Door
Clear Height: 18'
Available: Immediately



For more information, please contact:

TREY WEGHORST

Office: (770) 264-9420
Cell: (404) 276-9314
tweghorst@apexindustrialre.com

RECE MOORE

Office: (404) 574-6311
Cell: (770) 861-8140
rmoore@apexindustrialre.com



Although the information contained therein was provided from sources believed to be reliable, Apex Industrial makes no representation, expressed or implied, as to its accuracy and said information is subject to errors, omissions or changes.

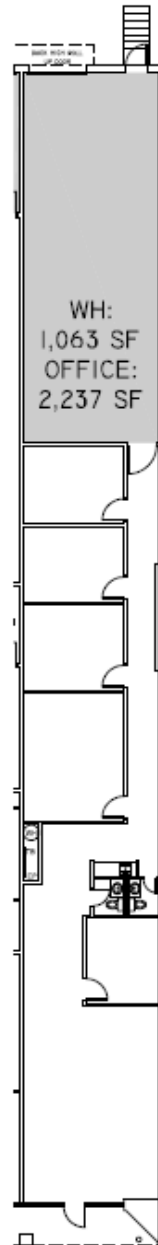


3,300 SF AVAILABLE

2500 Park Central Blvd
Suite B6
DECATUR, GA 30035



FLOORPLAN



For more information, please contact:

TREY WEGHORST

Office: (770) 264-9420
Cell: (404) 276-9314
tweghorst@apexindustrialre.com

RECE MOORE

Office: (404) 574-6311
Cell: (770) 861-8140
rmoore@apexindustrialre.com



Although the information contained therein was provided from sources believed to be reliable, Apex Industrial makes no representation, expressed or implied, as to its accuracy and said information is subject to errors, omissions or changes.