

LAND FOR LEASE

SR-636

Staunton, VA 24401

37.981150, -79.596155



SIZE : Lot 8 - Gosnell Cross, Staunton VA - 1.823 AC

HIGHLIGHTS

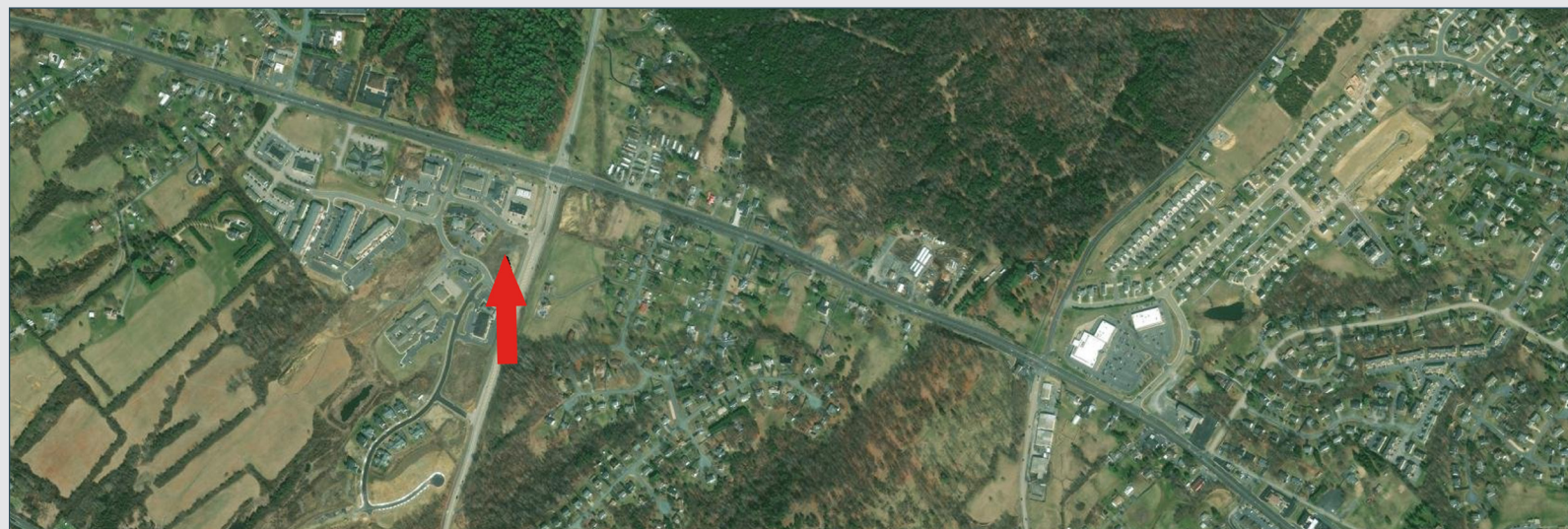
1.823 Acres: Available vacant land perfect for QSR, Retail or Office off Jefferson Highway Route 250.

Location: Between Fishersville, VA and Staunton, VA. Situated in **Gosnell Crossing**, a well-established and highly sought-after commercial district in Staunton, VA.

Zoning: Commercial use, offering flexibility for retail, office, medical, and other business types.

High Traffic Area: Located in an area with high daily traffic flow, ensuring excellent exposure for any business.

Expanding Community: Staunton is a rapidly growing community with a strong local economy, driven by diverse industries and a welcoming business environment.



Brooks Snead

804.288.3083 x122 Cell 804.539.4631

brooks.snead@hackneyrealestate.com

www.hackneyrealestate.com

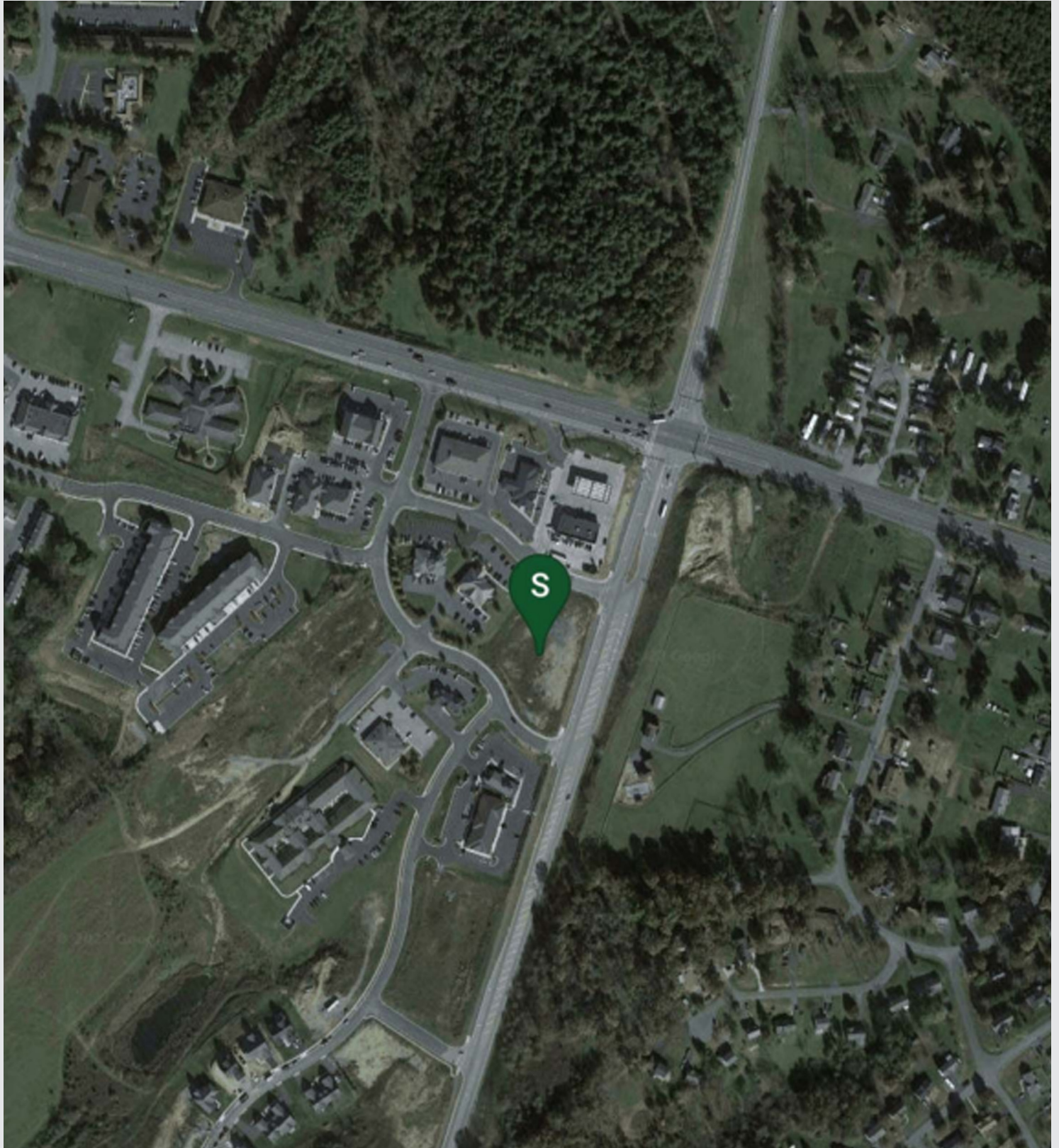
H
HACKNEY
REAL ESTATE PARTNERS

LAND FOR LEASE

SR-636

Staunton, VA 24401

37.981150, -79.596155



Brooks Snead

☎ 804.288.3083 x122 Cell 804.539.4631

✉ brooks.snead@hackneyrealestate.com

🌐 www.hackneyrealestate.com