

FOR SALE

6970 SANTA TERESA BLVD

SAN JOSE, CA 95119

±15,600 SQUARE FEET



NICK WHITSTONE

Senior Vice President
+1 408 453 7438
nick.whitstone@cbre.com
Lic. 01196787

ANDREW TRILLO

Senior Associate
+1 408 453 7499
andrew.trillo@cbre.com
Lic. 02069367

TYLER HUYGHUE

Associate
+1 408 790 5419
tyler.huyghue@cbre.com
Lic. 02244055

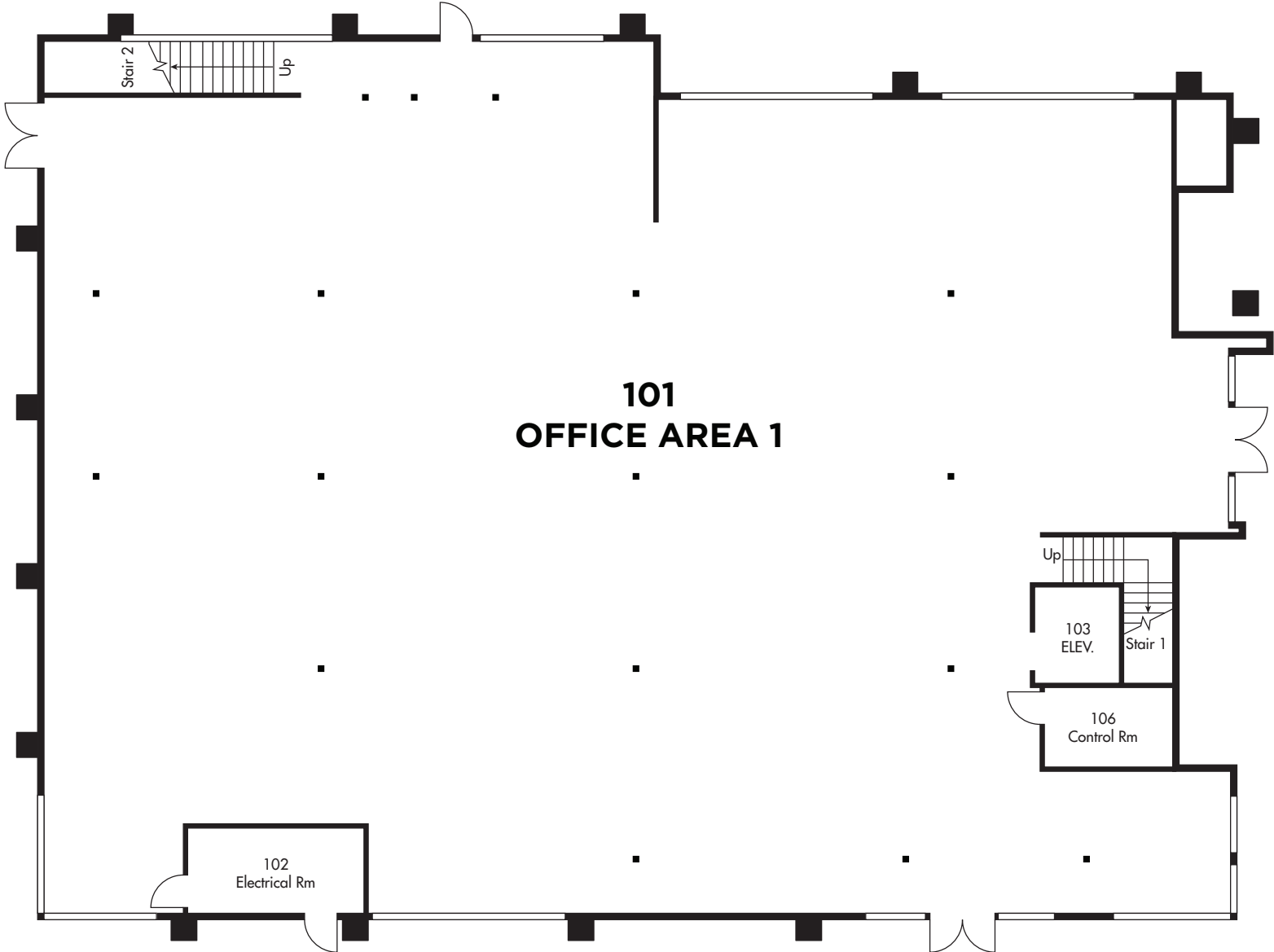
CBRE

PROPERTY-HIGHLIGHTS

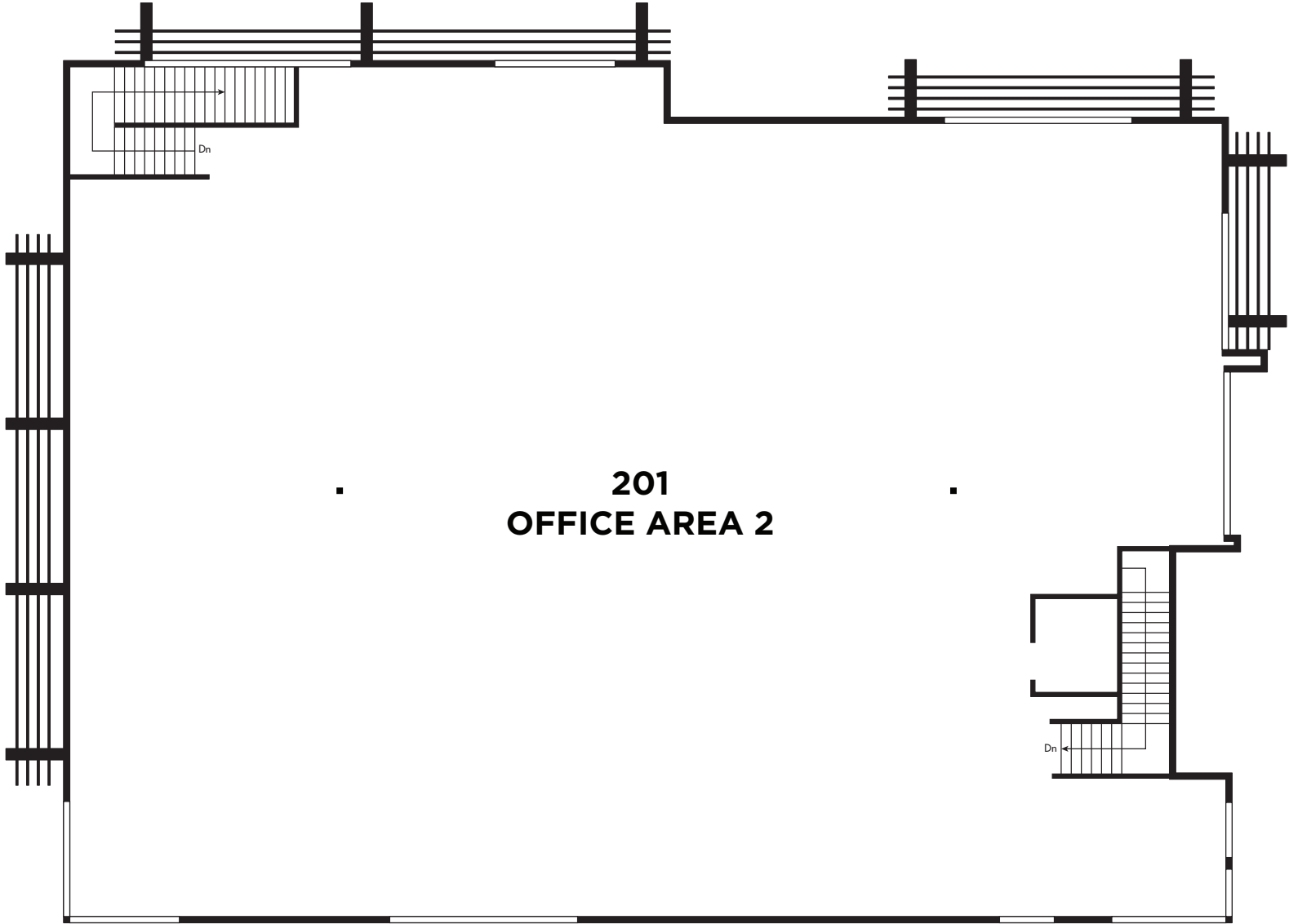
- ±15,600 Square Feet Office
- 2 Story Layout
- New Construction
- Shell Delivery - TI's to Suit
- Santa Teresa Blvd Frontage
- Zoning - Commercial Neighborhood
- GP - Neighborhood / Community Commercial
- Call for Pricing



FLOOR PLAN - FLOOR 1



FLOOR PLAN - FLOOR 2



SITE PLAN

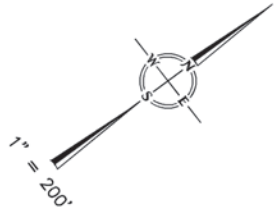
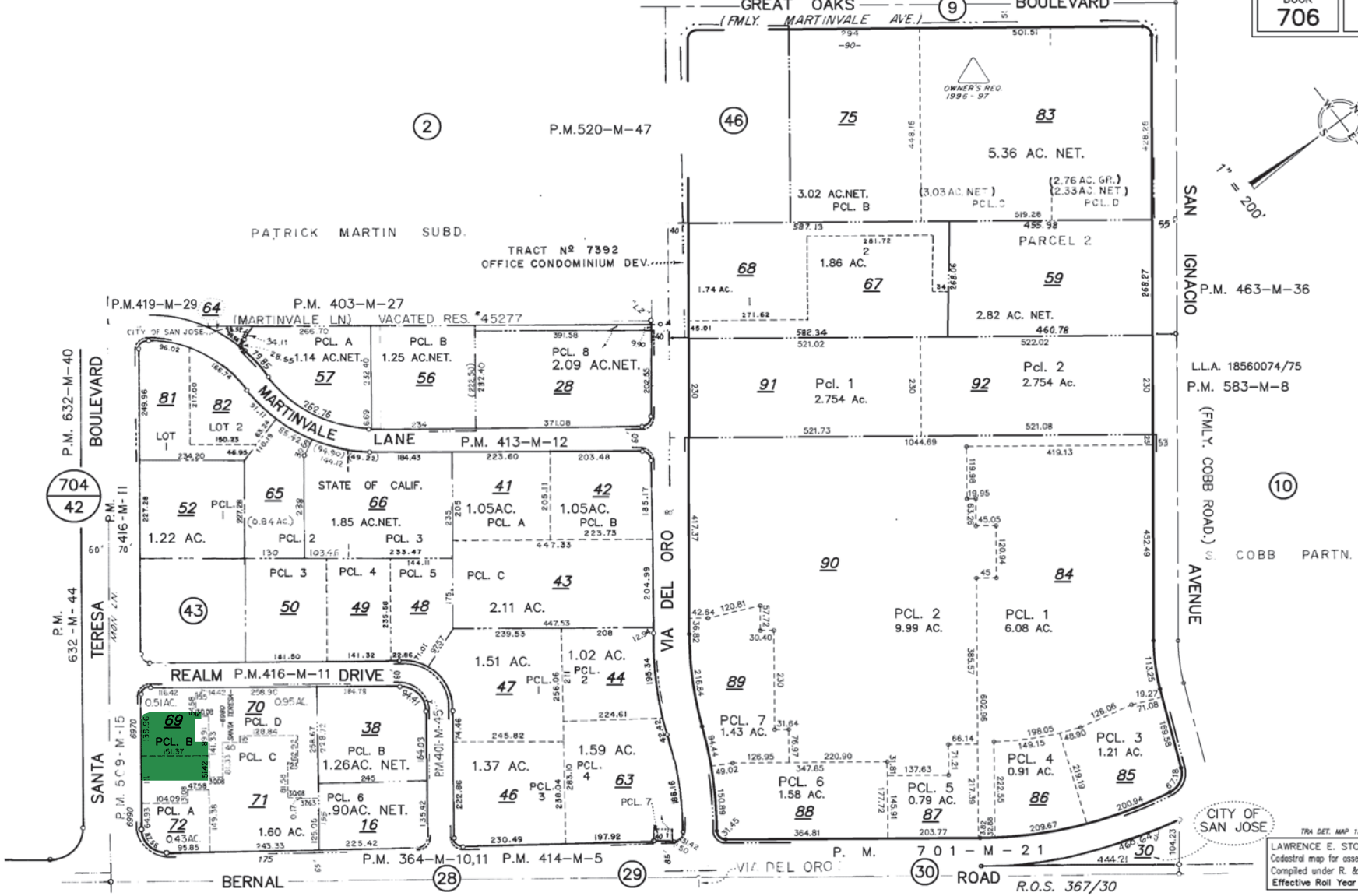


PARCEL MAP

OFFICE OF COUNTY ASSESSOR — SANTA CLARA COUNTY, CALIFORNIA

GREAT OAKS (9) BOULEVARD

BOOK 706 PAGE 1



LAWRENCE E. STONE - ASSESSOR
 Cadastral map for assessment purposes only.
 Compiled under R. & T. Code, Sec. 327.
 Effective Roll Year 2010-2011

GREEN = SUBJECT SITE

AMENITIES MAP



6970 SANTA TERESA BLVD

PLEASE CONTACT:

NICK WHITSTONE

Senior Vice President

+1 408 453 7438

nick.whitstone@cbre.com

Lic. 01196787

ANDREW TRILLO

Senior Associate

+1 408 453 7499

andrew.trillo@cbre.com

Lic. 02069367

TYLER HUYGHUE

Associate

+1 408 790 5419

tyler.huyghue@cbre.com

Lic. 02244055

© 2025 CBRE, Inc. All rights reserved. This information has been obtained from sources believed reliable, but has not been verified for accuracy or completeness. You should conduct a careful, independent investigation of the property and verify all information. Any reliance on this information is solely at your own risk. CBRE and the CBRE logo are service marks of CBRE, Inc. All other marks displayed on this document are the property of their respective owners, and the use of such logos does not imply any affiliation with or endorsement of CBRE. Photos herein are the property of their respective owners. Use of these images without the express written consent of the owner is prohibited.