



Turnkey Office - Excellent Location

- 4,784 square feet available
- Easy access to I-70 & I-635 via Parallel Parkway
- 1.5 miles from downtown Kansas City, Kansas
- Open floor plan offers flexibility for multiple uses
- Adjacent to Boys and Girls Club
- Garage door with small storage area accessible

For more information:

Christel Highland
816.410.9584
chighland@blockllc.com

Aaron M. Mesmer, CCIM
816.412.5858
amesmer@blockllc.com

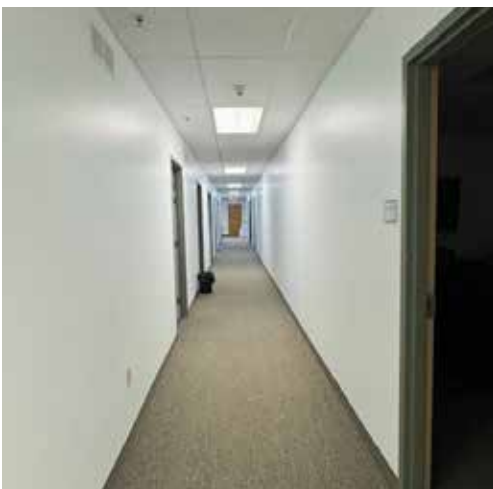
The information contained in this marketing flyer is presented as general information only. Block Real Estate Services, LLC makes no representation as to its accuracy. This information is not intended as legal, financial or real estate advice and must not be relied upon as such. You should make your own inquiries, obtain independent inspections, and seek professional advice tailored to your specific circumstances before making any legal, financial or real estate decisions.

1220 Troup Avenue

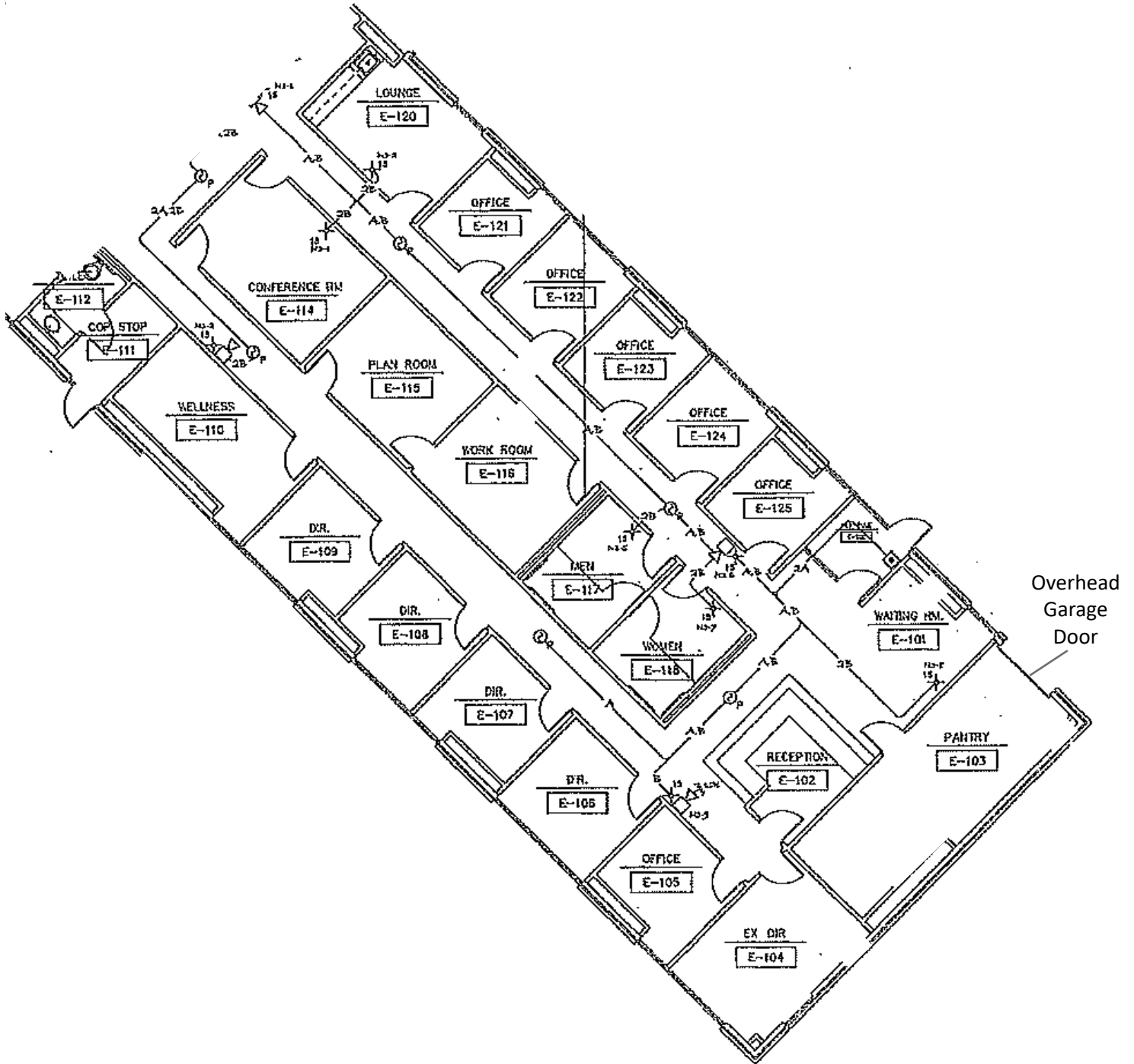
Kansas City, Kansas 66104

For Lease

Property Photos



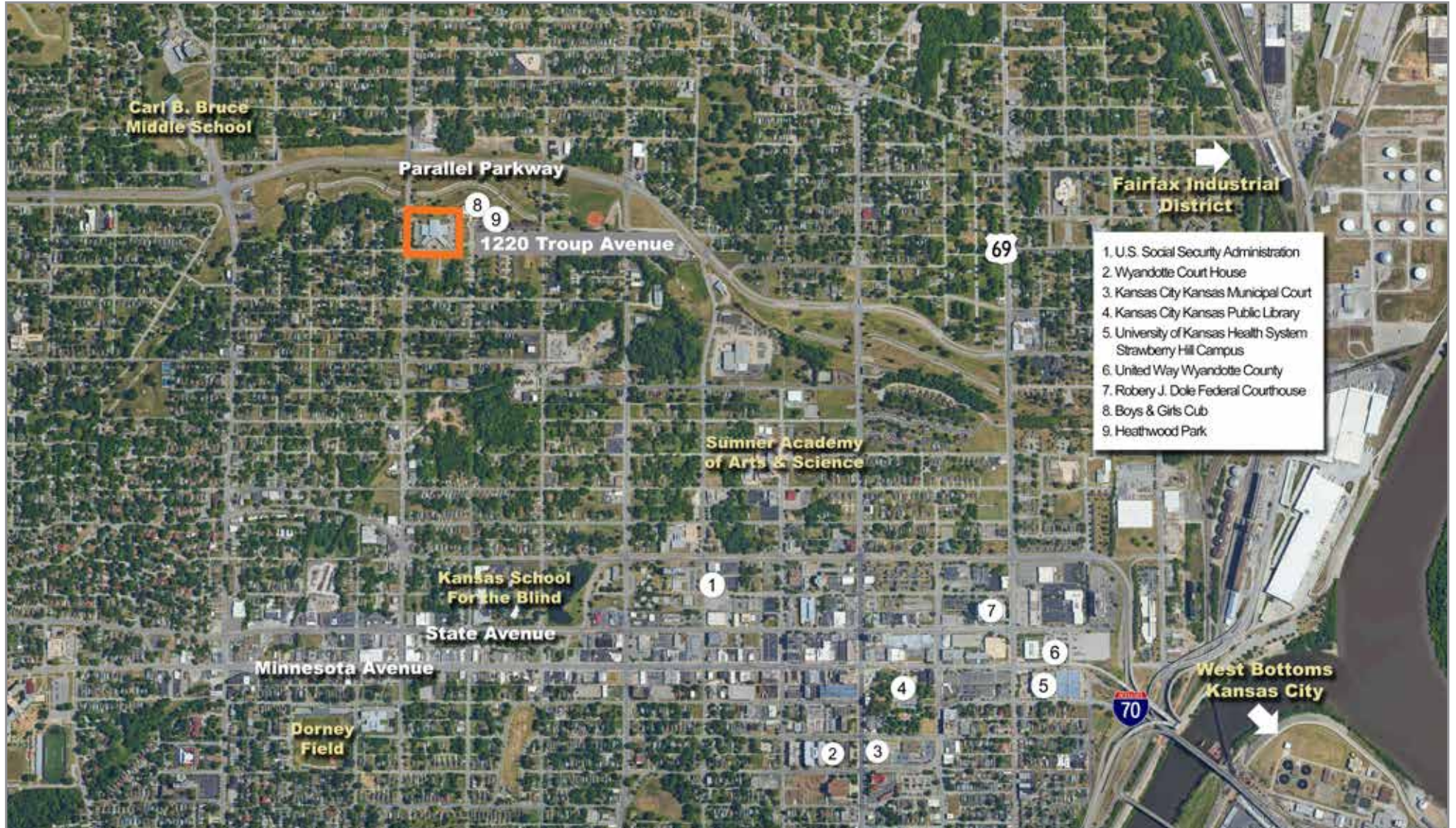
Floor Plan



1220 Troup Avenue

Kansas City, Kansas 66104

For Lease



4622 Pennsylvania Avenue, Suite 700
Kansas City, MO 64112
816.756.1400 | www.BLOCKLLC.com

BLOCK
REAL ESTATE SERVICES, LLC

1220 Troup Avenue

Kansas City, Kansas 66104

For Lease



For more information:

Christel Highland
816.410.9584
chighland@blockllc.com

Aaron M. Mesmer, CCIM
816.412.5858
amesmer@blockllc.com